

# TWH LED | TWP LED

Traditional Dayform Wall Packs

## Familiar Design. Site Configurable Technology.

Cast in a traditional dayform, the TWH and TWP LED wall pack luminaires come standard with adjustable light output allowing the distributors to reduce inventory, adjust to customers' needs and save energy compared to traditional light sources.

The TWH and TWP LED luminaires provide two choices in wall pack construction. The TWH's glass refractor provides a long-life solution with great optical control. The TWP's polycarbonate lens provides excellent optical distribution as well, but it is also vandal-resistant, making it ideal for lower mounting heights.

### Reduce Stock on Shelf

With ALO multiple lumen packages can be consolidated into one, allowing the distributor to not only reduce the number of SKUs they stock on their shelves, but also the amount of inventory they stock.

### Take out the Guesswork on the Jobsite

No need to guess the wattage of the existing luminaire or spend a lot of resources surveying the site. Easily adjust the light output to the customer's needs and match the existing levels

### Energy Savings and Long Life

Reduce energy consumption by up to 83% compared to traditional HID luminaires. The TWH and TWP LED luminaires deliver an expected service life of more than 20 years and eliminate frequent lamp and ballast replacements associated with traditional technologies.



TWH LED

TWP LED

### Quick Facts:

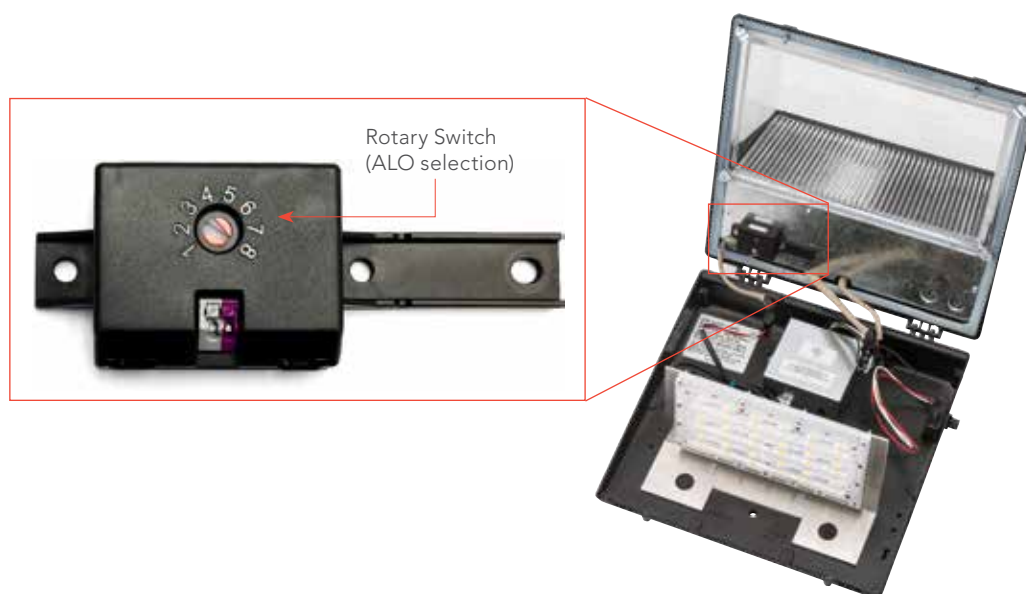
- Adjustable light output (ALO)
- TWH LED replaces 70-400W MH
- TWP LED replaces 70-250W MH
- DLC qualified
- 5000K & 4000K CCT stocked; 3000K CCT optional
- 20+ years expected service life (with lumen maintenance of L93/100,000 hours)

Learn more about our wall packs at [www.lithonia.com](http://www.lithonia.com)

# TWH LED | TWP LED

## Dial in your needs

Dial in the lumens you need through a rotary switch located inside of the luminaire.



TWH LED				
ALO Setting	System Watts	40K / 50K (4000K / 5000K, 70 CRI)		Replaces (Metal Halide)
		Lumens	LPW	
Step 8 (default)	78	9,214	118	400W
Step 7	73	8,704	119	250W
Step 6	63	7,659	122	
Step 5	54	6,590	122	
Step 4	44	5,498	125	150/175W
Step 3	34	4,381	129	
Step 2	25	3,241	130	100W
Step 1	16	2,076	130	70W

TWP LED				
ALO Setting	System Watts	40K / 50K (4000K / 5000K, 70 CRI)		Replaces (Metal Halide)
		Lumens	LPW	
Step 8 (default)	48	5,174	108	250W
Step 7	45	4,888	109	175W
Step 6	39	4,301	110	
Step 5	34	3,701	111	
Step 4	28	3,087	111	150W
Step 3	22	2,460	112	100W
Step 2	16	1,820	112	70W
Step 1	11	1,166	112	CFL

For added convenience – stock versions are available

Stock Part Number	CI Codes
TWH LED ALO 40K	*265A1X
TWH LED ALO 50K	*265A24
TWP LED ALO 40K	*265A1W
TWP LED ALO 50K	*265A23

Learn more about our wall packs at [www.lithonia.com](http://www.lithonia.com).