

15/25kV	200A Loadbreak Feed-Thru Well	K1601WFT
---------	-------------------------------	----------



Features:

- 15/25kV, 200 Amp Loadbreak Rated
- Uses integral parking stand mount
- Peroxide-cured insulation and jacket
- Optional accessories allow by-pass, isolation, testing, and grounding

K1601WFT Loadbreak Well Feed-Thru

Applications:

The Elastimold® K1601WFT feed-thru well is a fully shielded, fully submersible insulated connector designed for energized operation. It is suitable for use with 15kV or 25kV class loadbreak and/or deadbreak bushing inserts. When used in conjunction with 15kV or 25kV class elbow connectors, the K1601WFT provides the circuit with the junction point. The unit allows replacement of damaged bushing instead of the complete feed-thru reducing maintenance costs. When used in conjunction with proper dead-end receptacle the K1601WFT can be used to isolate and "dead-end" the circuit. The K1601WFT is designed to mate with the following Elastimold® products:

- 1601A4 Loadbreak Bushing insert
- 2701A4 Loadbreak Bushing insert
- K1501A1 Deadbreak feed-thru insert

Ratings:

Meets ANSI/IEEE Standard 386, Latest Revision

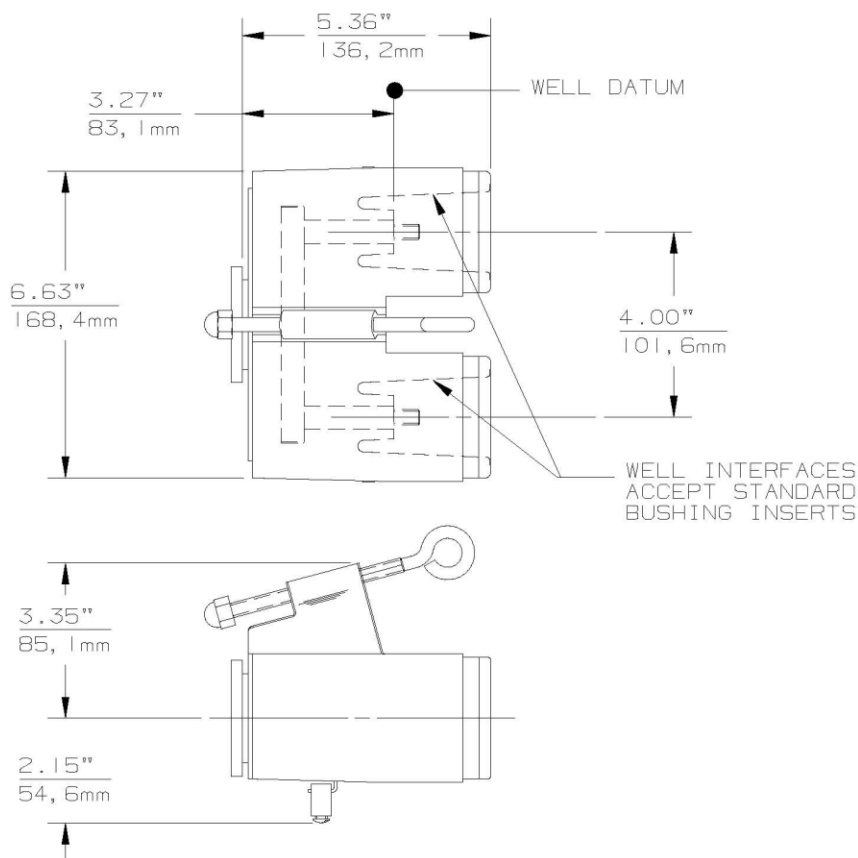
For 15kV Voltage Class:

8.3kV Max Phase-to-Ground – Operating Voltage
14.4kV Max Phase-to-Phase
95kV BIL – Impulse Withstand (1.2 x 50 microsecond wave)
34kV AC – One minute withstand
53kV DC – 15 minutes withstand
11kV AC – Corona Extinction @ 3pC sensitivity
200 Amp – Continuous and Loadbreak
10kA Sym – 10 Cycles Momentary & Fault Close

For 25kV Voltage Class:

15.2kV Max Phase-to-Ground – Operating Voltage
26.3kV Max Phase-to-Phase
125kV BIL – Impulse Withstand (1.2 x 50 microsecond wave)
40kV AC – One minute withstand
78kV DC – 15 minutes withstand
19kV AC – Corona Extinction @ 3pC sensitivity
200 Amp – Continuous and Loadbreak
10kA Sym – 10 Cycles Momentary & Fault Close

15/25kV	200A Loadbreak Feed-Thru Well	K1601WFT
---------	-------------------------------	----------



Ordering Instructions:

To order, specify number **K1601WFT** feed-thru well.

Each kit contains the following:

- | | | |
|---|--------------------------|----------|
| 1 | Feed-thru body | K1601WFT |
| 2 | Lubricant | 82-08 |
| 1 | Installation Instruction | IS-0493 |