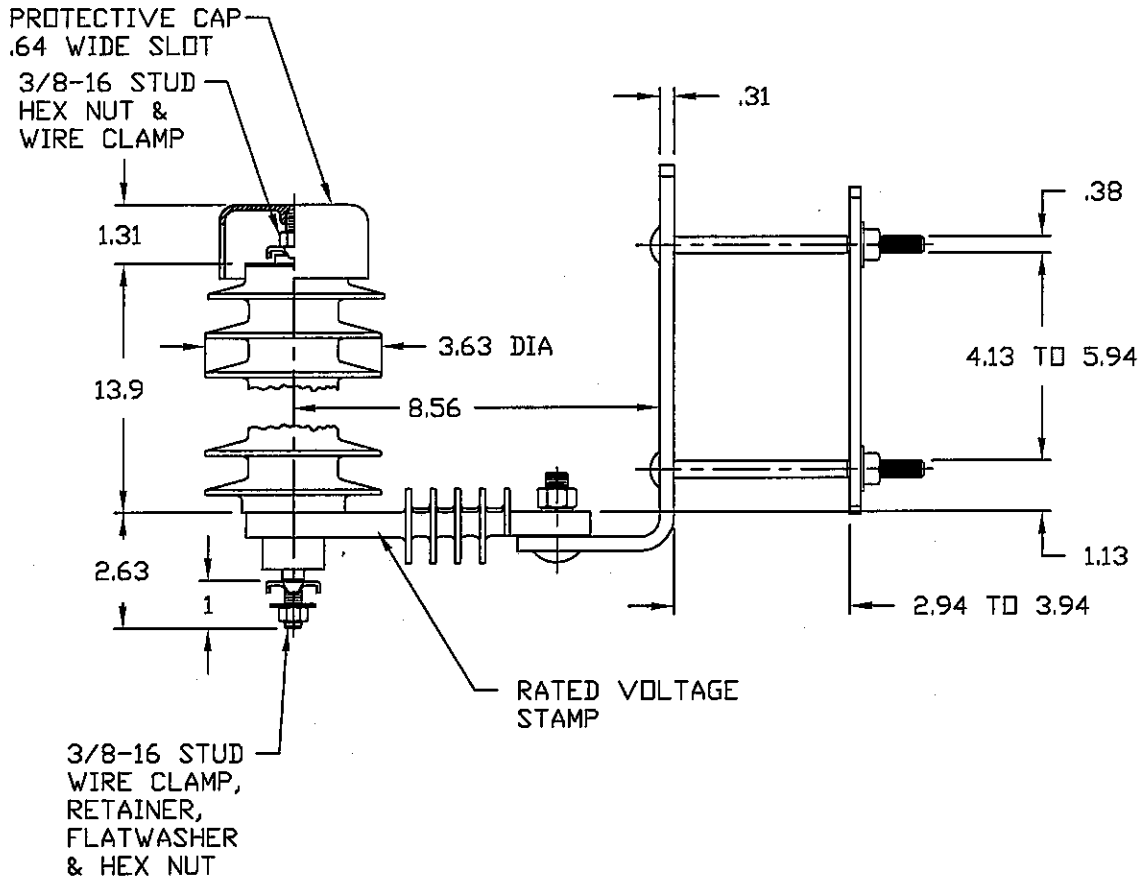


NOTES:

1. DIMENSIONS SUBJECT TO +/- 3% TOLERANCE
2. LEAKAGE DISTANCE (Inches) - 40.9
3. ALTITUDE 0-12000 FT. ABOVE SEA LEVEL
4. WEIGHT OF UNIT INCLUDING HARDWARE - 10.3 LB.
5. MAXIMUM CONTINUOUS LINE-TO-GROUND OPERATING VOLTAGE 22.0 kV MCOV
6. DUTY CYCLE VOLTAGE RATING 27 kV RMS.



.5 μ SEC 5kA IR KV	500 A SWITCHING SURGE IR KV	MAXIMUM 8/20 DISCHARGE VOLTAGE - KV AT					
		1.5 kA	3.0 kA	5 kA	10 kA	20 kA	40 kA
96.4	71.2	76.9	82.6	87.5	97.2	111.5	135.6

DISTRIBUTION CLASS SURGE ARRESTER					
		TITLE PDV-65 ARRESTER 22.0 KV MCOV			
CONFIDENTIAL: THIS DRAWING AND ITS CONTENTS ARE CONFIDENTIAL AND THE EXCLUSIVE PROPERTY OF HUBBELL POWER SYSTEMS. NO PUBLICATION, DISTRIBUTION OR COPIES MAY BE MADE WITHOUT THE WRITTEN CONSENT OF HUBBELL POWER SYSTEMS. HUBBELL POWER SYSTEMS UNPUBLISHED. ALL RIGHTS RESERVED UNDER THE COPYRIGHT LAWS.	SIZE S	DWG NO. ALES7XXX	CAT / PART / ASSY NO. 213272-7324	REV 7	DO NOT SCALE THIS DRAWING
REV DATE 10/24/07	DRN BY ENG1122	DATE 06/17/00	SHEET 1 OF 1		