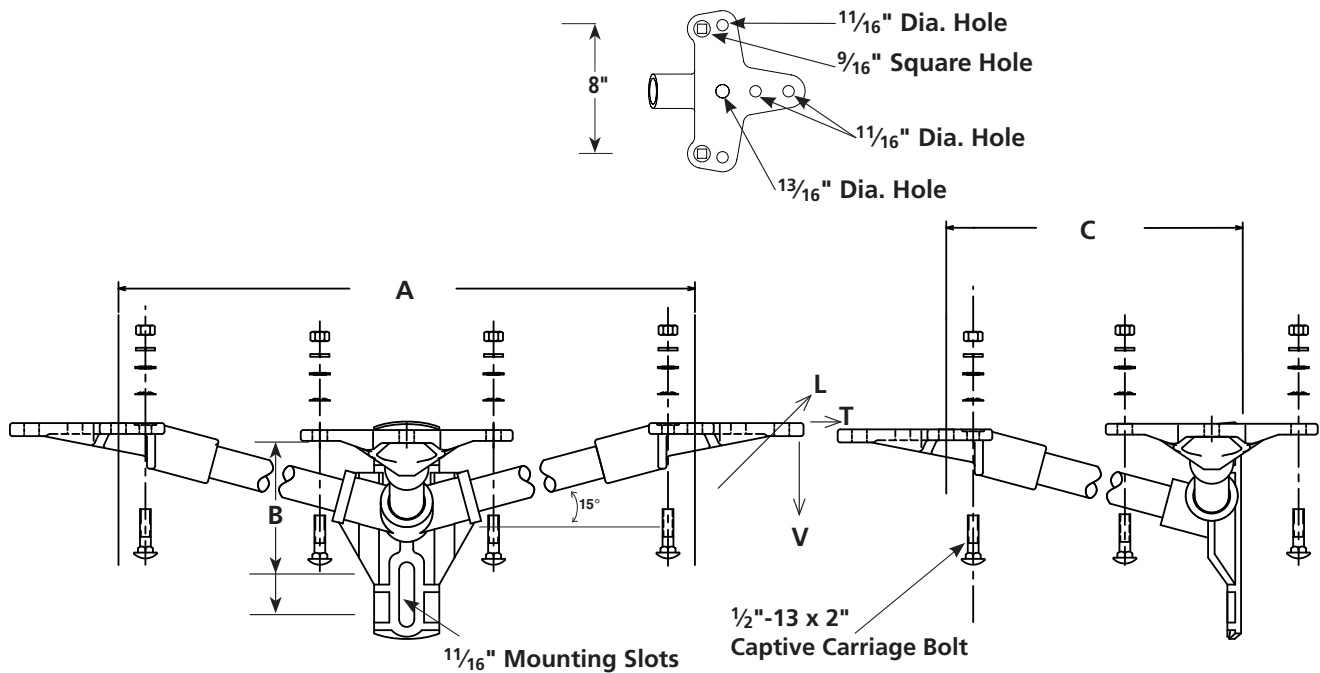


# 15° 7-Hole Cloverleaf Three-Phase Cutout / Arrester Bracket (15°)



- Base design permits bolting or banding to structure.
- Base is aluminum alloy.
- B Dimension is 6" & 8"
- End Fittings are aluminum alloy.

Catalog Number	Length A	Length C	Minimum Ultimate*			Weight (Each)
			Vertical V	Longitudinal L	Transverse T	
<b>Medium Duty 1 1/2" (38 mm) Dia. Fiberglass Rod</b>						
<b>Standoff Bracket only</b>						
3SBM3613DFCL	36" (91.4 cm)	13" (33.0 cm)	1200 lb. (544 kg)	800 lb. (363 kg)	10,000 lb. (4536 kg)	15.1 lb. (6.8 kg)
3SBM3618DFCL	36" (91.4 cm)	18" (45.7 cm)	1200 lb. (544 kg)	800 lb. (363 kg)	10,000 lb. (4536 kg)	15.6 lb. (7.1 kg)
3SBM4813DFCL	48" (121.9 cm)	13" (33.0 cm)	900 lb. (408 kg)	800 lb. (363 kg)	10,000 lb. (4536 kg)	16.6 lb. (7.5 kg)
3SBM4818DFCL	48" (121.9 cm)	18" (45.7 cm)	900 lb. (408 kg)	800 lb. (363 kg)	10,000 lb. (4536 kg)	17.2 lb. (7.8 kg)
3SBM4824DFCL	48" (121.9 cm)	24" (61.0 cm)	900 lb. (408 kg)	700 lb. (318 kg)	10,000 lb. (4536 kg)	18.1 lb. (8.2 kg)
<b>Bracket with Hardware</b>						
3SBM3613DFCLH	36" (91.4 cm)	13" (33.0 cm)	1200 lb. (544 kg)	800 lb. (363 kg)	10,000 lb. (4536 kg)	15.1 lb. (6.8 kg)
3SBM3618DFCLH	36" (91.4 cm)	18" (45.7 cm)	1200 lb. (544 kg)	800 lb. (363 kg)	10,000 lb. (4536 kg)	15.7 lb. (7.1kg)
3SBM4813DFCLH	48" (121.9 cm)	13" (33.0 cm)	900 lb. (408 kg)	800 lb. (363 kg)	10,000 lb. (4536 kg)	16.7 lb. (7.6 kg)
3SBM4818DFCLH	48" (121.9 cm)	18" (45.7 cm)	900 lb. (408 kg)	800 lb. (363 kg)	10,000 lb. (4536 kg)	17.3 lb. (7.8 kg)
3SBM4824DFCLH	48" (121.9 cm)	24" (61.0 cm)	900 lb. (408 kg)	700 lb. (318 kg)	10,000 lb. (4536 kg)	18.2 lb. (8.3 kg)

\*Recommended maximum working load is 50% of minimum ultimate ratings listed.

Consult factory for additional lengths.

Add "SC" suffix to the end of the catalog number to denote Silicone Coated rod

