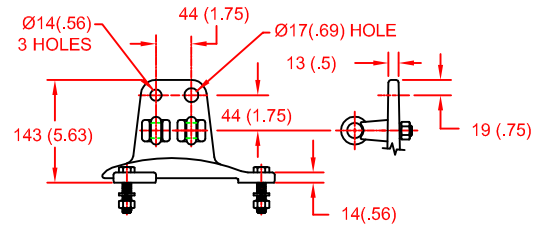
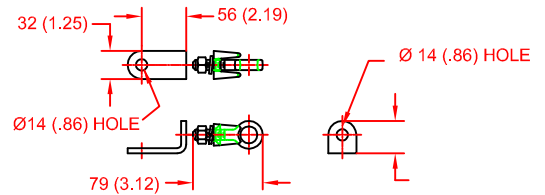


LINE TERMINAL DETAIL

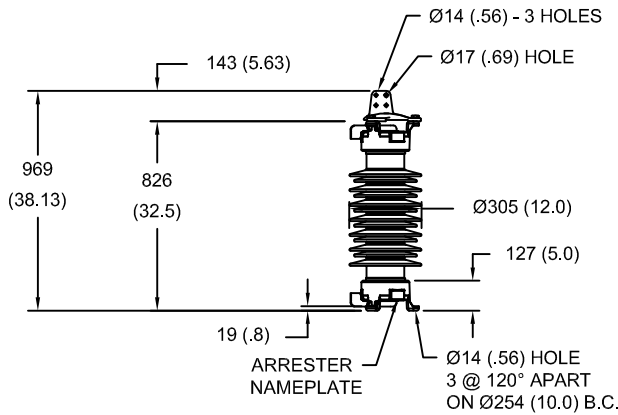


HDG 4-HOLE TERMINAL PAD, PART No. 901704001
 TWO HDG TERMINALS, PART No. 2714143001
 SUITABLE FOR Cu OR Al CONDUCTOR SIZE
 Ø 7 (.25) - Ø 21 (.81) DIA
 25 - 240 sq mm
 AWG#4 - 500 MCM

GROUND TERMINAL DETAIL



HDG TERMINAL BRACKET, PART No. 896064001
 ONE HDG TERMINAL, PART No. 2714143001
 SUITABLE FOR Cu OR Al CONDUCTOR SIZE
 Ø 7 (.25) - Ø 21 (.81) DIA
 25 - 240 sq mm
 AWG#4 - 500 MCM



CHARACTERISTICS	
RATED VOLTAGE	54 kVrms
MCOV	42 kVrms
MASS	80kg (175lb)
CREEPAGE DISTANCE	1905 (75.0)
LIGHTNING IMP W/S	358 kV
SWITCHING IMP W/S	310 kV
POWER FREQ W/S	186 kVrms
TOV 1s	62.5 kVrms
TOV 10s	60.0 kVrms
COG ABOVE BASE	439 (17.3)
HOUSING	GREY PORCELAIN

CANTILEVER FORCE	
MAXIMUM CONTINUOUS	7021 N (1578lbf)
ULTIMATE (UMS)	17553 N (3946lbf)

RECOMMENDED CLEARANCE (TO METAL PARTS)	
PHASE TO GROUND	211 (8.3)
PHASE TO PHASE	253 (9.9)

- NOTES:
 1. DIMENSIONS IN millimeters(inches) SUBJECT TO ±3% TOLERANCE
 2. CLEARANCE AND INSULATION W/S VOLTAGE APPLY AT SEA LEVEL
 3. ARRESTER SUITABLE FOR OPERATION AT ALTITUDES UP TO 3650m (12000ft)

DISCHARGE VOLTAGE (kV) FOR INDICATED IMPULSE TYPES AND CURRENT MAGNITUDES							
FRONT OF WAVE	SWITCHING SURGE	8/20 LIGHTNING IMPULSE					
		1.5 kA	3 kA	5 kA	10 kA	20 kA	40 kA
10 kA	0.5 kA	108	113	117	122	131	144
133	101						

ANSI
 STATION CLASS
 SURGE ARRESTER

Program Revision
 2011.05.26.12.28.00

REV DATE
04/14/11

CONFIDENTIAL: THIS DRAWING AND ITS CONTENTS ARE CONFIDENTIAL AND THE EXCLUSIVE PROPERTY OF HUBBELL POWER SYSTEMS. NO PUBLICATION, DISTRIBUTION OR COPIES MAY BE MADE WITHOUT THE WRITTEN CONSENT OF HUBBELL POWER SYSTEMS. HUBBELL POWER SYSTEMS UNPUBLISHED ALL RIGHTS RESERVED UNDER THE COPYRIGHT LAWS.

TITLE MVN ARRESTER 42 KV MCOV			
SIZE S	DWG NO. 112562535	CAT / PART / ASSY NO. MVN054GA042AA	REV 0
DO NOT SCALE THIS DRAWING	DRN BY NON	DATE 04/14/11	SHEET 1 OF 1



HUBBELL POWER SYSTEMS