



[Catalog Home](#)

Product Datasheet



ANDERSON FARGO

GL123 -- Automatic Splice



Automatic Splice, for Copper, Copperweld, Dia. Range 0.62 - 0.63 in.

Product Specifications

<p>Splice Type</p>	 <p>Automatic Splices</p>
<p>Automatic Splice Series</p>	 <p>GL-100 Series Automatic Splice Copper Copper & Copperweld® Conductor</p>
<p>PDF Catalog Page</p>	<p>Click HERE to view the web page.</p>
<p>Conductor Type</p>	<p>Copperweld</p>
<p>Automatic Conductor Range</p>	<p>300 str CU</p>
<p>Material</p>	<p>Copper</p>
<p>Gripper Material</p>	<p>Bronze Alloy</p>
<p>Minimum Conductor Diameter</p>	<p>0.62 in</p>
<p>Maximum Conductor Diameter</p>	<p>0.63 in</p>
<p>Outside Diameter</p>	<p>.62 - .63 in (15.8 - 16.1 mm)</p>
<p>Dimension A</p>	<p>8.6 in (220 mm)</p>
<p>Dimension B</p>	<p>1.5 in (38 mm)</p>
<p>UL Listed</p>	<p>No</p>
<p>Inhibitor Loaded</p>	<p>Yes</p>
<p>Color Code</p>	<p>None</p>
<p>Material Type</p>	<p>Non-Standard</p>
<p>UPC Code</p>	<p>09635931159</p>
<p>Standard Package</p>	<p>25</p>
<p>Standard Package Unit</p>	<p>Each</p>

Min Order Qty	25
Weight / Ea.	2.234 lbs

Notes

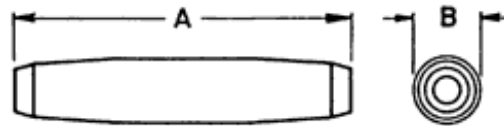
Consult Factory for conductor sizes not listed.

Features

Individually bagged to seal out dirt before use.

Compressed Product Number

GL123



Ref Dimension A & B

[Catalog Home](#)



[Warranty Info](#) | [Trademarks](#) | [Terms of Use](#)

All contents Copyright © 2007 Hubbell Power Systems, Inc. All rights reserved.

NOTE: Because Hubbell has a policy of continuous product improvement, we reserve the right to change design and specifications without notice.