



[Catalog Home](#)

**Product Datasheet**

**ANDERSON FARGO**

**STTH1414 -- Coupler, Bronze Bolted**



Coupler, Tube to Tube, Bronze Bolted, 1-1/2 to 1-1/2 IPS tubes

**Product Specifications**

**Family Image**



Couplers

**Couplers**



**STTH Series**  
Tube to Tube, Straight  
Bronze Bolted Couplers

**PDF Catalog Page**

[Click HERE to view the web page.](#)

**Clamping Hardware Material**

Stainless Steel

**Dimension A**

2.63 in (66.7 mm)

**Dimension B**

2.63 in (66.7 mm)

**Dimension C**

3.75 in (95.3 mm)

**Dimension J**

0.50 in (12.7 mm)

**Dimension L**

5.63 in (142.9 mm)

**Dimension W**

3.75 in (95.3 mm)

**Material Type**

Non-Standard

**UPC Code**

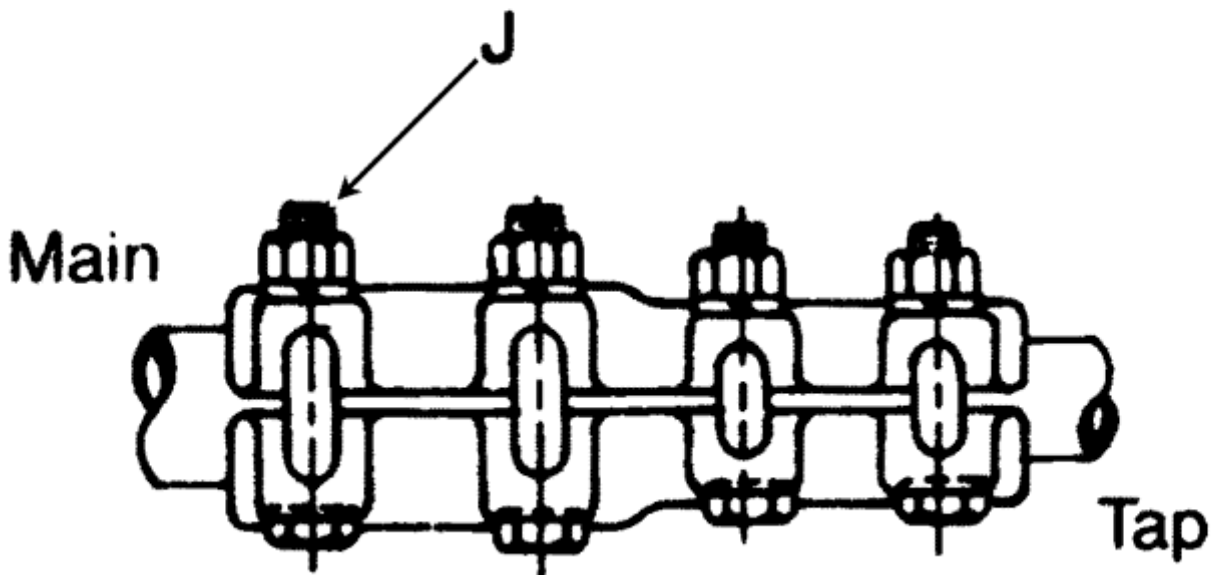
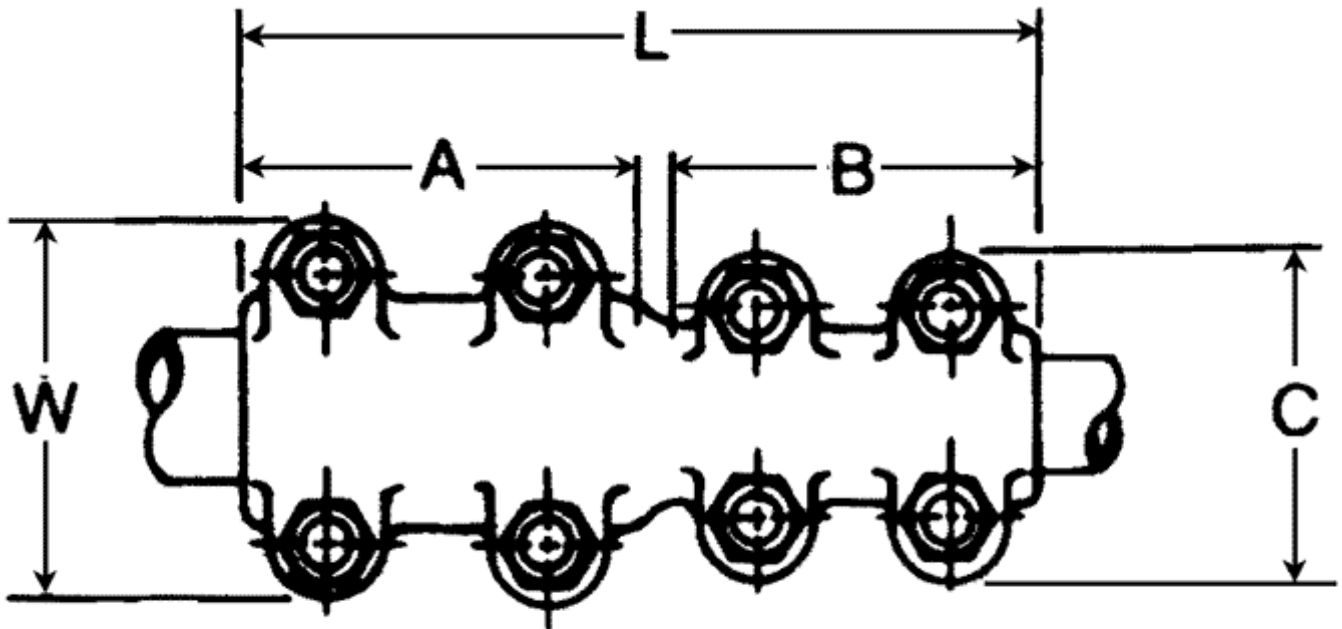
09635932699

**Standard Package**

9

Standard Package Unit	Each
Min Order Qty	1
Weight / Ea.	6.86 lbs

**Compressed Product Number**  
STTH1414



[Catalog Home](#)



NOTE: Because Hubbell has a policy of continuous product improvement, we reserve the right to change design and specifications without notice.