



**POWER
SYSTEMS, INC.**

In the world of power transmission and distribution, look to Hubbell.

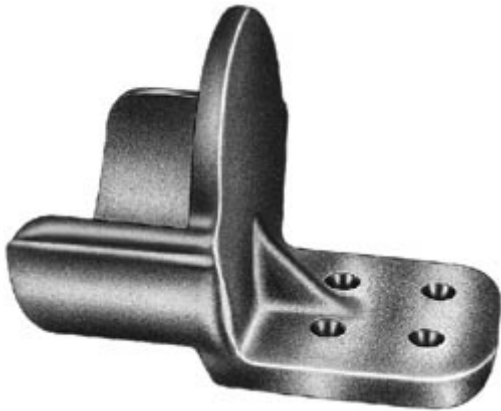
**Interactive
eCatalog**

[Catalog Home](#)

Product Datasheet

ANDERSON FARGO

WSTF24D -- Terminal, Aluminum Weldment



Terminal, Aluminum Weldment, Tube to Flat, tube size 2-1/2 IPS Pad: 4 hole, 4 in

Product Specifications

Family Image



Terminals

Terminals



WSTF Series
Tube to Flat
Aluminum Weldment Terminals

PDF Catalog Page

[Click HERE to view the web page.](#)

Pad Holes

4

Pad Width

4 in

Pad Position

Sideformed

Dimension A

4.25 in (108.0 mm)

Dimension B

3.75 in (95.3 mm)

Dimension C

2 in (50.8 mm)

Dimension K

1.13 in (28.6 mm)

Dimension L

8.25 in (209.6 mm)

Dimension T

0.50 in (12.7 mm)

Dimension W

4 in (101.6 mm)

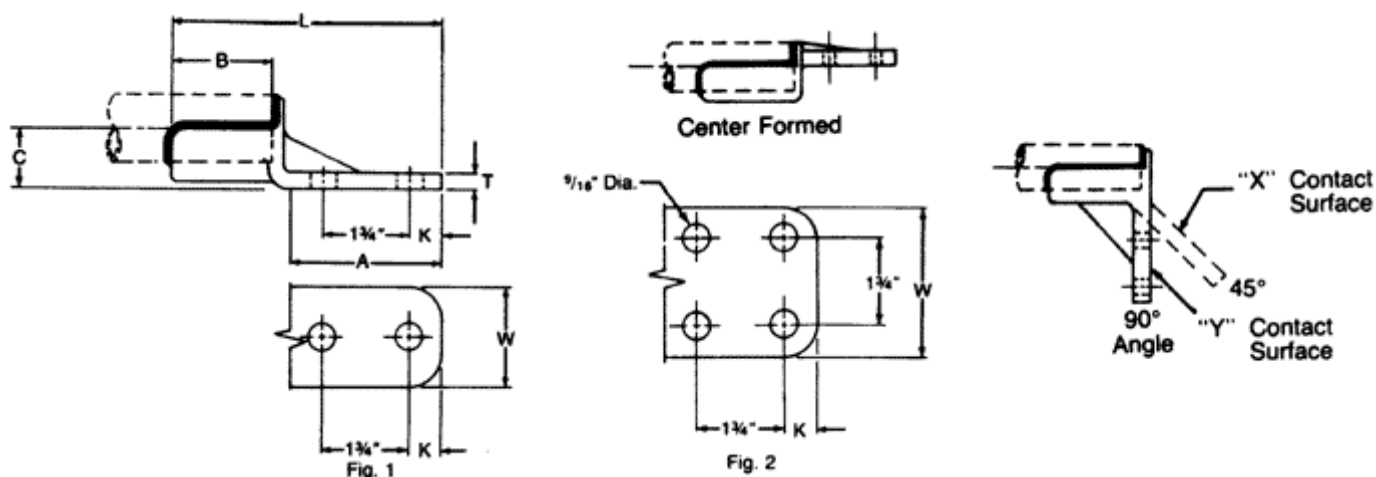
Material Type	Non-Standard
UPC Code	09635934210
Standard Package	24
Standard Package Unit	Each
Min Order Qty	1
Weight / Ea.	1.96 lbs

Notes

45 or 90 degree angle terminal may be specified by adding X45 or Y90 suffix to catalog number.

Compressed Product Number

WSTF24D



[Catalog Home](#)



[Warranty Info](#) | [Trademarks](#) | [Terms of Use](#)

All contents Copyright © 2007 Hubbell Power Systems, Inc. All rights reserved.

NOTE: Because Hubbell has a policy of continuous product improvement, we reserve the right to change design and specifications without notice.