



Catalog Number: 66120-GSC3R-NK
Item Description: N3R SCREW CVR GUTTER NK
UPC Code: 784572264960

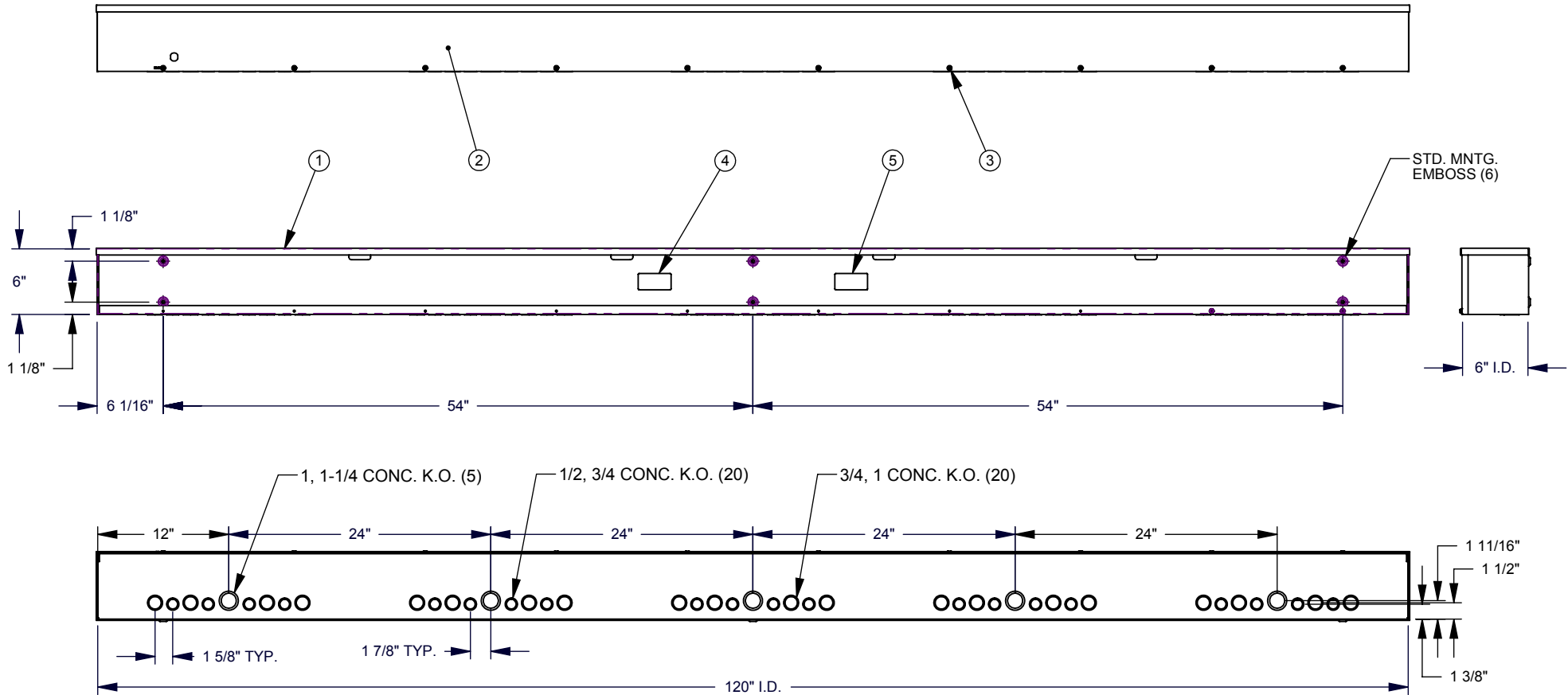
Brand Name: Milbank
Type: Wiring Trough
Special Features: Key Locking Cylinder Latch Provision,
Sealing Eye Lance
Application: Wireway
Standard: UL Listed, Type 3R
Cover Type: Screw Cover
Enclosure: Outdoor Enclosure
Nominal Cross Section: 6x6
Straight Section Length: 120
Material: Steel with Powder Coat Finish
Finish: ANSI 61 Gray
Knockouts: False



Utility requirements may vary. Always consult the serving utility for their requirements prior to ordering or installing this equipment. This product must always be installed by a licensed electrician. Installation of this equipment may require local electrical inspector approval.

CAT. NO.	U/L LABEL
66120-GSC3R-()	1002943
RC-66120-GSC3R-()	1125051

ITEM	QTY.	PART NUMBER	DESCRIPTION
1	1	(SEE CHART)	BACK WELDMENT
2	1	(SEE CHART)	FRONT 66120-GSC3R
3	10	1001290	SCREW, 10-32 X 5/16
4	1	1002897	LABEL, RATING 6x6 GSC3R
5	1	(SEE CHART)	UL LABEL, WIREWAY



SUFFIX	FINISH	WELDMENT NO.	FRONT NO.	INSTALL KOs
NONE	MILBANK LIGHT GRAY	1177661	1177648	YES
-NP	NONE	1177663	1103579	
-NK	MILBANK LIGHT GRAY	1177662	1177648	NO
-NK-NP	NONE	1177664	1103579	

Material: 16 GA. GALV. STEEL	
Shear/Die No.:	
Finish:	SEE CHART
Part Wt.:	LBS. EA.
Paint Qty.:	GRAMS
Tolerances: Unless Specified Otherwise X.X ±.1 X.XX ±.03 X.XXX ±.015 X" ±2"	
Third Angle	
Scale: NTS	Checked By:
Drawn By: DEF	Approved By:



Title:	SCREW COVER WIREWAY NEMA TYPE 3R
Catalog No.:	(SEE CHART)
Customer:	
Drawing No.:	1006930
Date:	05/21/15
Sheet:	1 of 1

NEMA DRWG.: #756

REV.	DATE	DESCRIPTION	ECO No.	BY
D	5/21/15	REDRAW INTO SW; CHART VERSIONS; UPDATE UL LABEL	032027	DEF