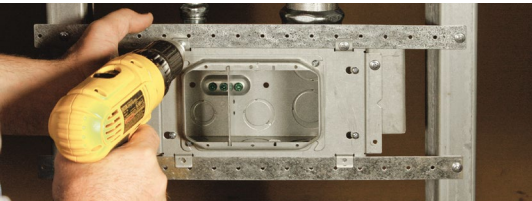


## Large capacity Wall Boxes

### One, two or three gang boxes

Oversized two or three gang boxes and mud rings are perfect for AV, data and power applications. Extra-large knockouts for pulling pre-terminated cables.

- Designed to deliver power and low voltage in the same box
- Use standard mud rings and wallplates
- Two inch knockout feed-thru
- 3 1/4 Inch depth accommodates large cables and bend radii



### 2-Gang Large Capacity Wall Boxes

Boxes are 4 1/16" square, 3/4" deep. The boxes have 66.7 in.<sup>3</sup> capacity. Use with industry standard 4 1/16" square mud rings for 1- or 2-gang applications

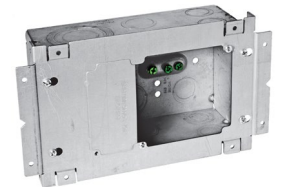
Box Description	Side Knock Outs		Back Knock Outs	Catalog Number
	Concentric	TKO	TKO	
Standard	(2) 1"-2"	(2) 3/4"-1" (2) 1"-1 1/4"	(2) 3/4"-1" (2) 1 1/2"	<b>HBL260</b>
With mounting brackets	(2) 1"-2"	(2) 3/4"-1" (2) 1"-1 1/4"	(2) 3/4"-1" (2) 1 1/2"	<b>HBL260H</b>



### 3-Gang Large Capacity Wall Box

Boxes are 4 1/16"H, 7 3/4"W, 3/4" deep. The boxes have 113.3 in.<sup>3</sup> capacity. Use with industry standard 4" square mud rings for 1- or 2-gang applications

Box Description	Side Knock Outs		Back Knock Outs	Catalog Number
	Concentric	TKO	TKO	
Square 2- or 3-gang wall box	(2) 1"-2"	(4) 1/2"-3/4" (4) 3/4"-1" (2) 1"-1 1/4"	(2) 1/2"-3/4" (2) 3/4"-1" (2) 1"-1 1/4"	<b>HBL263</b>



### Mud Rings

Description	For use with	Height	Capacity (In. <sup>3</sup> )	Catalog Number
2-gang mud rings	HBL260	5/8"	7.3	<b>HBL818</b>
		3/4"	8.8	<b>HBL840</b>
		1"	12.0	<b>HBL819</b>
		1 1/4"	15.0	<b>HBL820</b>
3-gang mud rings	HBL263	1/2"	10.1	<b>HBL792</b>
		5/8"	12.3	<b>HBL793</b>
		1 1/4"	24.3	<b>HBL794</b>



### Low Voltage Partition

For use with	Mud Ring Depth	Type	Catalog Number
HBL260 and HBL263	1/2", 3/4" and 1 1/4"	Solid divider With pass-thru capability	<b>HBL981</b> <b>HBL981AVD</b>



Dimensions in Inches (mm)