

Rittal – The System.

Faster – better – everywhere.

Wall/base mounting bracket CP 60, large – CP 6206.800

Date : May 24, 2018

ENCLOSURES

POWER DISTRIBUTION

CLIMATE CONTROL

IT INFRASTRUCTURE

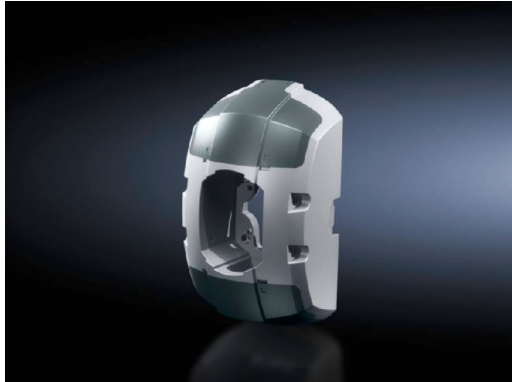
SOFTWARE & SERVICES

FRIEDHELM LOH GROUP



Wall/base mounting bracket CP 60, large – CP 6206.800

created: 24.05.2018 build on www.rittal.com/us-en



Product description

Description: For stable attachment of the support arm system to a vertical or horizontal surface.

Benefits: Prepared for flexible cable entry and routing from all sides
Integral one-man assembly via machined keyhole
Optional anti-twist attachment on the mounting surface by pinning
Integral adjustment facility

Material: Wall/base mount: Cast aluminum
Cover: Plastic

Color: Wall/base mount, RAL 7035
Cover: RAL 7024

Supply includes: Seals
Grub (set) screws
Adjusting screws
Self-tapping screws for support section attachment

Product features

rigid: yes

Packaging unit: 1 pc(s).

Weight/packaging unit: 1.4 kg (3.1 lb.)

EAN: 4028177684324

Customs tariff 73182900

number:	
ETIM 6.0:	EC000882
ETIM 5.0:	EC002620
eCI@ss 8.0/8.1:	27400556
eCI@ss 7.0/7.1:	27189261
eCI@ss 6.0/6.1:	27189261
eCI@ss 5.1/5.1.4:	27189247
Product description (long):	CP Wall/base mounting bracket CP 60, large
Approvals	
Declarations:	Manufacturer's declaration