

# Rittal – The System.

Faster – better – everywhere.

## ▶ Angle coupling 90° CP 120 for support arm connection Ø 130 mm – CP 6212.380

Date : May 24, 2018

ENCLOSURES

POWER DISTRIBUTION

CLIMATE CONTROL

IT INFRASTRUCTURE

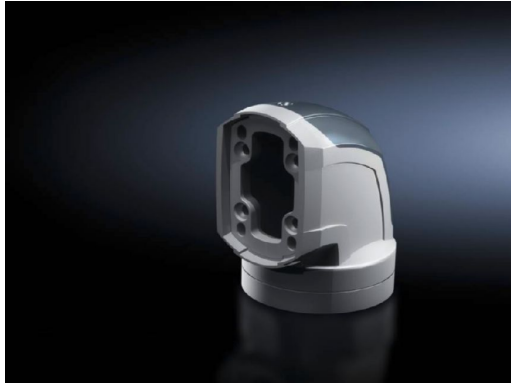
SOFTWARE & SERVICES

FRIEDHELM LOH GROUP



# Angle coupling 90° CP 120 for support arm connection Ø 130 mm – CP 6212.380

created: 24.05.2018 build on [www.rittal.com/us-en](http://www.rittal.com/us-en)



## Product description

<b>Description:</b>	For swivel mounting of the housing on the horizontal part of the support arm system. Housing may be suspended or top-mounted. Removable cover for easy cable routing.
<b>Material:</b>	Angle coupling: Cast aluminum/die-cast zinc Cover: Plastic
<b>Color:</b>	Angle coupling: RAL 7035 Cover: RAL 7024
<b>Supply includes:</b>	Seals Grub (set) screws Adjusting screws Self-tapping screws for support section attachment

## Product features

<b>Rotating/tilting:</b>	yes
<b>Rotation/swivel range:</b>	Approximately 310°, lockable via clamping levers The range of rotation can be limited by inserting the grub (set) screws provided
<b>Packaging unit:</b>	1 pc(s).
<b>Weight/packaging unit:</b>	2.1 kg (4.6 lb.)
<b>EAN:</b>	4028177684201

<b>Customs tariff number:</b>	76169990
<b>ETIM 6.0:</b>	EC000882
<b>ETIM 5.0:</b>	EC000882
<b>eCl@ss 8.0/8.1:</b>	27400556
<b>eCl@ss 7.0/7.1:</b>	27189261
<b>eCl@ss 6.0/6.1:</b>	27189261
<b>eCl@ss 5.1/5.1.4:</b>	27189247
<b>Product description (long):</b>	CP Angle coupling 90°, CP 120, for support arm connection Ø 130 mm
<b>Approvals</b>	
<b>Declarations:</b>	Manufacturer's declaration