

Deliver Long-Lasting Protection With the Most Versatile Weatherproof Covers on the Market



[Intermatic.com](https://www.intermatic.com)





Our durable lineup of die-cast, low-profile and multi-duty rated plastic weatherproof covers offers rugged protection in all types of applications, including industrial, commercial, residential and more! Time-saving features, premium construction and an array of customization options make them a welcome addition to any project.

STAY COMPLIANT NEC Code, Article 406.9 (B)(1)

Intermatic Weatherproof Covers meet or exceed the latest NEC requirements for extra-duty applications and wet locations.

- For the NEC Code, all 15 and 20 ampere, 125 and 250 volt receptacles installed in a wet location still must have an enclosure and covers that are weatherproof whether an attachment plug cap is inserted or not.
- A revision now requires all enclosures and covers installed in wet locations for 15 and 20 ampere, 125 and 250 volt receptacles to be listed, and of the "extra-duty" type, not just boxes supported from grade.
- This requirement is now also required for dwelling units as well. The requirement for weather-resistant type receptacles in wet locations is still applicable in the NEC Code. This change also provoked changes to Article 590.4(D)(2) for extra-duty covers for all 15 and 20 ampere, 125 and 250 volt receptacles installed at temporary installations in a wet location.
- Exceeds the CEC Section 26-702.
- Standard weatherproof cover compliance guidelines apply only to Article 314.15.

Low-Profile Plastic Weatherproof Cover Features

Extra-Duty Models Are NEC Article 406.9 (B)(1) for Wet Locations and Extra-Duty Applications Compliant; CEC 26-702 Compliant; RoHS Compliant

Low-Profile Plastic

Stylish design

100% Paintable surface

Expandable window

Effortless Adjustment

Keyhole slots and adhered gasket

Faster installation; no GFCI insert required

Concealed hinge

Easy open latch with lockable hasp

Heavy-duty polycarbonate construction ensures long-lasting durability

Extra-Duty Low-Profile Plastic

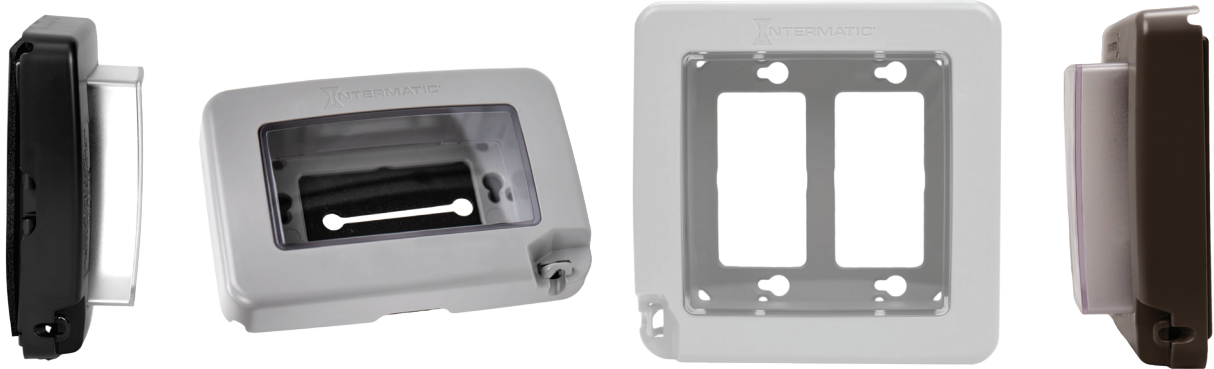
Single-gang covers mount vertically or horizontally



RoHS

Low-Profile Expandable In-Use Weatherproof Covers

Low-Profile Expandable In-Use Weatherproof Covers by Intermatic provide a sleek, easy-to-use alternative to traditional in-use weatherproof cover options. The unique design of the Low-Profile Series allows homeowners to collapse the cover's front window when not in use, avoiding an eyesore on the side of the house. This improves aesthetics while delivering dependable, code-compliant protection for a range of outdoor applications.



Low-Profile Expandable In-Use Weatherproof Covers Include:

- **Improved Aesthetics** – Unlike traditional covers, Low-Profile In-Use Covers include an expandable front window that can be collapsed to save space when not in use
- **Simple, Secure Access** – An innovative new design provides a no-hassle latch with lockable hasp that can be opened effortlessly with one hand
- **Quick Installation** – GFCI pre-set; keyhole slots help electrical contractors complete installation in minutes
- **Configuration Options** – Available in single-gang and double-gang configurations, as well as standard and extra-duty; select white, gray or bronze color options; single-gang models accommodate both vertical and horizontal installations
- **Code Compliant** – WP7000 and WP7200 Series Low-Profile In-Use Covers comply with NEC Article 406.9 (B)(1) for wet locations and Extra-Duty applications; CEC 26-702 Compliant; RoHS Compliant
- **Inserts** – Single-gang come with one duplex and one round. Double-gang come with two duplex and two round. All models are GFCI pre-set; no insert required.

Low-Profile Expandable In-Use Weatherproof Covers Ordering

Black	Gray	White	Bronze	Style
Single-Gang				
WP6000BL	WP6000G	WP6000W	WP6000BR	Standard
WP7000BL	WP7000G	WP7000W	WP7000BR	Extra-Duty
—	WP7003G*	—	—	Extra-Duty
Double-Gang				
—	WP6200G	—	—	Standard
WP7200BL	WP7200G	WP7200W	WP7200BR	Extra-Duty

*Includes 3/0 adapter plate for 3" (76 mm) round box

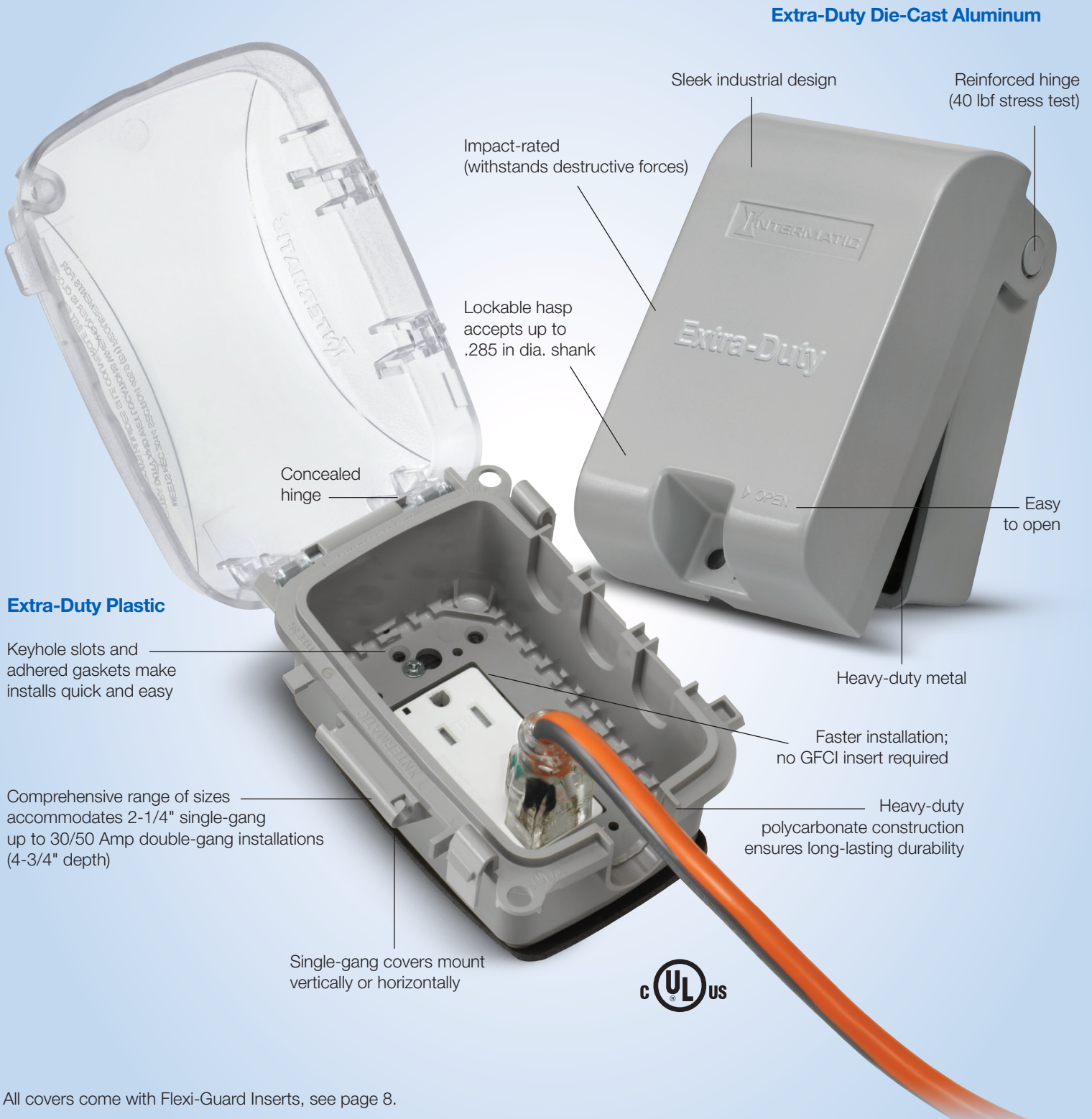


Now available in black!



Extra-Duty Weatherproof Cover Features

UL, NEMA 3R, NEC® 406.9 (B)(1) Compliant and CEC Section 26-702



All covers come with Flexi-Guard Inserts, see page 8.

WP5000 Extra-Duty Plastic Series

Extra-Duty Plastic Weatherproof Covers are easy to install and shipped with an adhered gasket, mounting screws, base, cover assembly and inserts to accommodate a variety of applications.



Extra-Duty Plastic Weatherproof Covers Ordering



Clear/Gray	Gray	Black	White	Beige	Bronze	Depth	Flexi-Guard Inserts
Single-Gang							
WP5000C	WP5000G	WP5000BL	WP5000W	—	—	2.25	WP17
WP5100C	WP5100G	WP5100BL	WP5100W	—	WP5100BR	2.75	WP17
WP5103C*	—	—	—	—	—	2.75	WP17
WP5110C	—	—	—	—	—	3.625	WP17
Double-Gang							
WP5220C	WP5220G	—	WP5220W	WP5220B	—	2.25	WP217
WP5221C	—	—	—	—	—	2.25	WP101, WP102
WP5225C	WP5225G	—	—	—	—	2.75	WP217
WP5240C	—	—	—	—	—	3.625	WP217
WP5500C	—	—	—	—	—	30/50 AMP**	WP107, WP213

*Includes 3/0 adapter plate for 3" (76 mm) round box

**30/50 AMP = 4.75" depth

Additional SKUs available:

- **WP5103C** – **WP5100C** with round adapter plate
- **WP5221C** – 2.25" depth double-gang with WP101 (double-gang duplex) and WP102 (double-gang GFCI) inserts

One Less Step During Installation

Now Pre-Set for GFCI Applications

- Single-gang, Extra-duty plastic covers
- Pre-set for GFCI – no insert required!
- Can be mounted vertically or horizontally
- 16 configurations in one



GFCI Insert No Longer Required!

WP Extra-Duty Die-Cast Series

Die-Cast Aluminum Weatherproof Covers are easy to install and shipped with a gasket, mounting screws, base, cover assembly and inserts for a variety of applications.



Die-Cast In-Use Aluminum Weatherproof Covers are extra-duty rated and easy to install. Heavy-duty die-cast aluminum construction ensures long-lasting durability. Covers come with a gasket, mounting screws, base, cover assembly and inserts to meet the needs of a variety of applications.



Die-Cast Aluminum Weatherproof Covers Ordering

Part #	Type	Depth	Height	Width	Flexi-Guard Inserts
WP3110MXD	Single-Gang	2.75	6.37	3.87	WP17
WP1010MXD	Single-Gang	3.125	6.37	3.87	WP17
WP1010HMXD	Single-Gang*	3.125	4.37	5.75	WP17

* Note: WP1010HMXD is horizontal

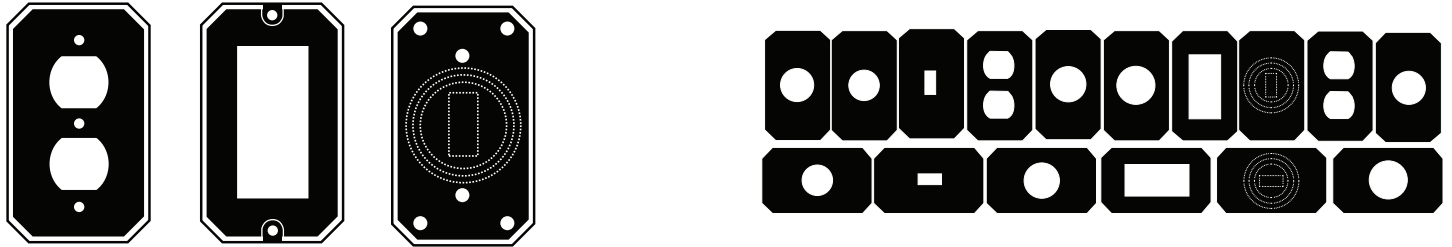
Part #	Type	Depth	Height	Width	Flexi-Guard Inserts
WP1030MXD	Double-Gang	3.125	6.37	5.75	WP217
WP1250MVXD	Single-Gang	4.625	6.37	3.87	WP17
WP1250MXD	Double-Gang	4.625	6.37	5.75	WP217

Flexi-Guard Inserts

All original series weatherproof covers include Flexi-guard inserts and mounting screws. Simply place the insert into the cover, rotate as needed, then snap it into place.

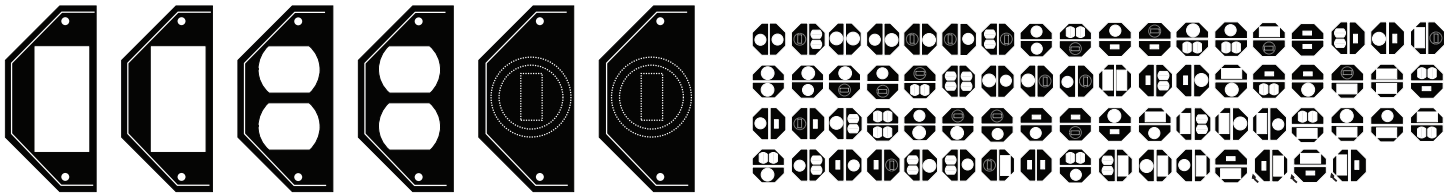
WP17 Single-Gang Flexi-Guard Inserts – 16 Configurations in One!

- Three separate inserts can be configured into 16 different receptacles or switches
- Converts to either toggle or round receptacles in 1.375", 1.625", 1.75" or 2.125"



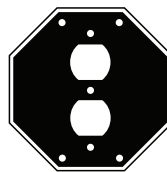
WP217 Double-Gang Flexi-Guard Inserts – 70 Configurations in One!

- Six standard inserts combine to make 70 possible configurations
- Converts to either toggle or round receptacles in 1.375" or 1.625"

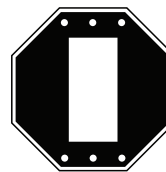


Plus, additional inserts available:

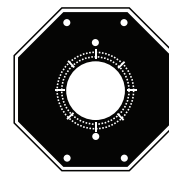
- **WP101** Double-Gang Duplex
- **WP102** Double-Gang GFCI
- **WP107** Double-Gang Round 1.375", 1.625" or 1.75"
- **WP213** Double-Gang Round 2.156" or 2.656"



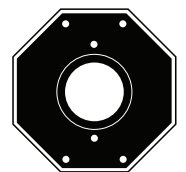
WP101



WP102



WP107



WP213



For additional information on our
Standard-Duty Weatherproof Covers

