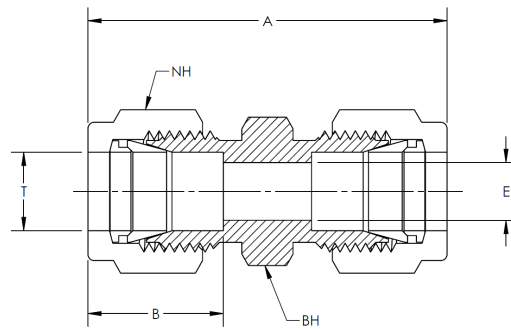
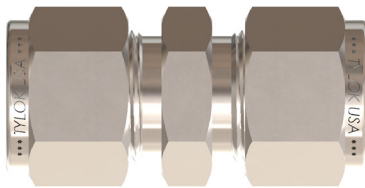


CBC PART NUMBER	INTERCHANGES WITH		CS PART NUMBER	INTERCHANGES WITH		T TUBE O.D.	A	B	E THRU HOLE	NH NUT HEX	BH BODY HEX
1-DU	100-6	1SC1	1-SU	1-1 HBZ	1/16	0.99	0.35	0.05	5/16	5/16	
2-DU	200-6	2SC2	2-SU	2-2 HBZ	1/8	1.40	0.52	0.09	7/16	7/16	
3-DU	300-6	3SC3	3-SU	3-3 HBZ	3/16	1.47	0.54	0.13	1/2	7/16	
4-DU	400-6	4SC4	4-SU	4-4 HBZ	1/4	1.61	0.61	0.19	9/16	1/2	
5-DU	500-6	5SC5	5-SU	5-5 HBZ	5/16	1.69	0.65	0.25	5/8	9/16	
6-DU	600-6	6SC6	6-SU	6-6 HBZ	3/8	1.77	0.67	0.28	11/16	5/8	
8-DU	810-6	8SC8	8-SU	8-8 HBZ	1/2	2.02	0.90	0.41	7/8	13/16	
10-DU	1010-6	10SC10	10-SU	10-10 HBZ	5/8	2.05	0.96	0.50	1	15/16	
12-DU	1210-6	12SC12	12-SU	12-12 HBZ	3/4	2.11	0.96	0.63	1-1/8	1-1/16	
14-DU	1410-6	14SC14	14-SU	14-14 HBZ	7/8	2.17	1.02	0.72	1-1/4	1-3/16	
16-DU	1610-6	16SC16	16-SU	16-16 HBZ	1	2.55	1.24	0.88	1-1/2	1-3/8	
B-18-DU	B-1810-6	-	-	-	1-1/8	2.55	1.25	0.97	1-3/4	1-5/8	
20-DU	2000-6	20SC20	-	-	1-1/4	3.63	1.62	1.09	1-7/8	1-3/4	
24-DU	2400-6	24SC24	-	-	1-1/2	4.25	1.97	1.34	2-1/4	2-1/8	

Note: Dimensions subject to change, to be used for reference only.

METRIC



CBC PART NUMBER	INTERCHANGES WITH		T TUBE O.D. (mm.)	A (mm.)	B (mm.)	E THRU HOLE (mm.)	NH NUT HEX (in.)	BH BODY HEX (in.)
6MM-DU	6M0-6	SCM6	6	41.0	15.3	4.8	9/16	9/16
8MM-DU	8M0-6	SCM8	8	43.2	16.2	6.4	5/8	9/16
10MM-DU	10M0-6	SCM10	10	46.2	17.2	7.9	3/4	11/16
12MM-DU	12M0-6	SCM12	12	51.2	22.8	9.5	7/8	7/8

Note: Dimensions subject to change, to be used for reference only.