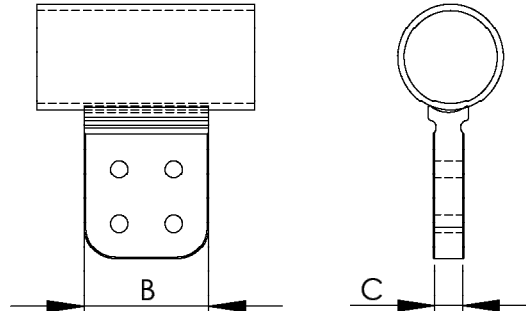


For a secure and reliable connection between a pipe bus and a flat pad to which a choice of fittings may be bolted. The type EHV WTD tee connector is a particularly adaptable, efficient and economical choice.

It is cast of a lightweight and corrosion-resistant aluminum alloy for dependability and durability in the field. Coupled with available bolt shields, these terminals are capable of providing a corona free environment through 500KV. Bolt shields must be ordered separately.



WELDED EHV TEE CONNECTOR PIPE TO FLAT PAD				
CATALOG NUMBER	PIPE SIZE IPS	PAD STYLE	DIMENSIONS IN INCHES	
			B	C
18-624-WR-EHV	1-3	D	4	3/4
18-642-WR-EHV	3-6	D	4	1
18-624-90-*-EHV	1-3	D	4	3/4
18-642-90-*-EHV	3-6	D	4	1



For 90 degree applications, a full saddle weld is required. Please indicate the actual pipe size.  
**Example:** 18-642-90-4"IPS-EHV