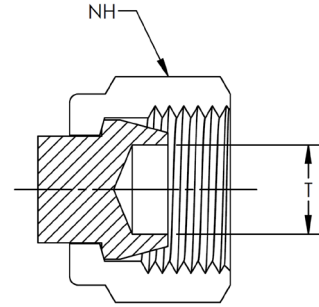


DF PLUG/SF PLUG

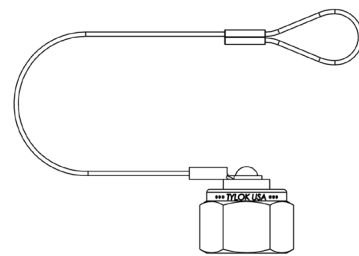
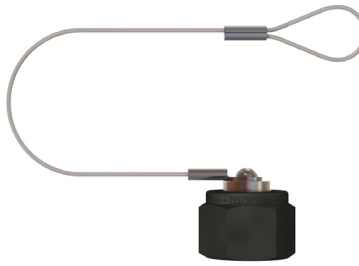
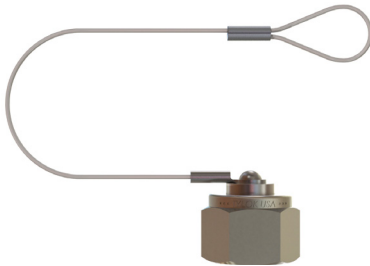
Plug

CBC/CS-Lok



CBC PART NUMBER	INTERCHANGES WITH	CS PART NUMBER	INTERCHANGES WITH	T TUBE O.D.	NH NUT HEX
1-DF PLUG	100-P	1BLP1	1-SF PLUG	1 FNZ	1/16 5/16
2-DF PLUG	200-P	2BLP2	2-SF PLUG	2 FNZ	1/8 7/16
3-DF PLUG	300-P	3BLP3	3-SF PLUG	3 FNZ	3/16 1/2
4-DF PLUG	400-P	4BLP4	4-SF PLUG	4 FNZ	1/4 9/16
5-DF PLUG	500-P	5BLP5	5-SF PLUG	5 FNZ	5/16 5/8
6-DF PLUG	600-P	6BLP6	6-SF PLUG	6 FNZ	3/8 11/16
8-DF PLUG	810-P	8BLP8	8-SF PLUG	8 FNZ	1/2 7/8
10-DF PLUG	1010-P	10BLP10	10-SF PLUG	10 FNZ	5/8 1
12-DF PLUG	1210-P	12BLP12	12-SF PLUG	12 FNZ	3/4 1-1/8
14-DF PLUG	1410-P	14BLP14	14-SF PLUG	14 FNZ	7/8 1-1/4
16-DF PLUG	1610-P	16BLP16	16-SF PLUG	16 FNZ	1 1-1/2
B-18-DF PLUG	B-1810-P	-	-	-	1-1/8 1-3/4
20-DF PLUG	2000-P	20BLP20	-	-	1-1/4 1-7/8
24-DF PLUG	2400-P	24BLP24	-	-	1-1/2 2-1/4

Note: Dimensions subject to change, to be used for reference only.



CBC PART NUMBER	INTERCHANGES WITH	CS PART NUMBER	T TUBE O.D.	NH NUT HEX
4-DF PLUG-L	400-P-0013	4-SF PLUG-L	1/4	9/16
5-DF PLUG-L	-	5-SF PLUG-L	5/16	5/8
6-DF PLUG-L	600-P-0012	6-SF PLUG-L	3/8	11/16
8-DF PLUG-L	810-P-0006	8-SF PLUG-L	1/2	7/8
10-DF PLUG-L	-	10-SF PLUG-L	5/8	1
12-DF PLUG-L	1210-P-0005	12-SF PLUG-L	3/4	1-1/8
14-DF PLUG-L	-	14-SF PLUG-L	7/8	1-1/4
16-DF PLUG-L	-	16-SF PLUG-L	1	1-1/2