

Die-Cast Aluminum Boxes

2-Gang



Applications

- For use in branch circuit wiring in wet, damp or dry locations
- May be used as a weatherproof junction box, or as a housing for receptacles, switches and GFCI's

Product Features

- Reinforced connector outlets
- Durable powder coat finish
- Included beveled corner mounting lugs provide for 24 different mounting positions
- Closure plugs included
- Ground screw installed
- Multilingual instructions in each package
- Internal threads on hubs comply with NEMA requirements. Hubs accept all threaded fittings and threaded conduit

Compliance

- File E195978
- C22.2 No. 18
- FILE E212332*
- NEMA 3R



5333-0



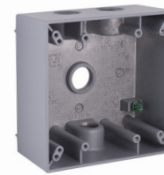
DB350WH
DB350Z



5341-0



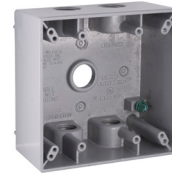
DB375WH
DB375Z



5335-0



5343-0



5337-0/5
5337-1



5345-0

Die-Cast Aluminum Boxes - 2-Gang

Catalog #	Cubic In. (cm3)	Description		Pkg. Type	Std. Pkg.	Bar Code
		Color	Outlets			
2" Deep, with Lugs - Three Threaded Outlets - 4-1/2" X 4-1/2"						
5333-0	32.0 (524.4)	Gray	(3) 1/2"	Shrink	12	
DB350WH*	33.8 (553.9)	White	(3) 1/2"	Shrink	9	
DB350Z*	33.8 (553.9)	Bronze	(3) 1/2"	Shrink	9	
5341-0	32.0 (524.4)	Gray	(3) 3/4"	Shrink	12	
DB375WH*	33.0 (540.8)	White	(3) 3/4"	Shrink	9	
DB375Z*	33.0 (540.8)	Bronze	(3) 3/4"	Shrink	9	
2" Deep, with Lugs - Four Threaded Outlets - 4-1/2" X 4-1/2"						
5335-0	31.0 (508.0)	Gray	(4) 1/2"	Shrink	12	
5343-0	31.0 (508.0)	Gray	(4) 3/4"	Shrink	12	
2" Deep, with Lugs - Five Threaded Outlets - 4-1/2" X 4-1/2"						
5337-0	31.0 (508.0)	Gray	(5) 1/2"	Shrink	12	
5337-1	31.0 (508.0)	White	(5) 1/2"	Shrink	12	
5337-5	31.0 (508.0)	Gray	(5) 1/2"	Carded	4	
5345-0	31.0 (508.0)	Gray	(5) 3/4"	Shrink	12	

Notes: *FILE E212332.

See end of section (Pg D44) for detailed drawings »