

WEATHERPROOF BOXES, COVERS, AND LIGHTING  
**Die-Cast Aluminum Box and Extension**

## 2-Gang Extension



### Applications

- Used to provide additional capacity needed for NEC box fill requirements

### Product Features

- Rugged seamless construction
- Durable powder coat finish
- Installation hardware and gasket provided
- Multilingual instructions in each package

### Compliance

- File E195978
- C22.2 No. 18
- NEMA 3R



5407-0

### 2-Gang Extension - 4-21/32" X 4-21/32" X 1-1/32" Deep

Catalog #	Cubic In. (cm <sup>3</sup> )	Description		Pkg. Type	Std. Pkg.	Bar Code
		Color	Outlets			
5407-0	16.0 (262.2)	Gray	—	Shrink	10	

## 3-Gang



### Applications

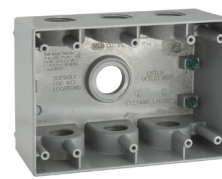
- For use in branch circuit wiring in wet, damp or dry locations
- Can be used as a weatherproof junction box, or as a housing for receptacles, switches and GFCI's

### Product Features

- Seamless die-cast aluminum construction
- Reinforced connector outlets
- Durable powder coat finish
- Included beveled corner mounting lugs provide for 24 different mounting positions
- Four closure plugs included
- Ground screws installed
- Multilingual instructions in each package
- Internal threads and hubs comply with NEMA requirements. Hubs accept all threaded fittings and threaded conduit



TB750S\*



5390-0



TB7100S\*

### 3-Gang Box - 2-5/8" Deep, with Lugs - Seven Threaded Outlets 4-1/2" X 6-3/8"

Catalog #	Cubic In. (cm <sup>3</sup> )	Description		Pkg. Type	Std. Pkg.	Bar Code
		Color	Outlets			
TB750S*	61 (999)	Gray	(7) 1/2"	Shrink	5	
5390-0	55.0 (901.3)	Gray	(7) 3/4"	Boxed	1	
TB7100S*	56.0 (917.7)	Gray	(7) 1"	Shrink	5	

Notes: \*FILE E212332.

### Compliance

- File E195978
- C22.2 No. 18
- FILE E212332\*
- NEMA 3R

See end of section (Pg D45) for detailed drawings »