

Product data sheet

Characteristics

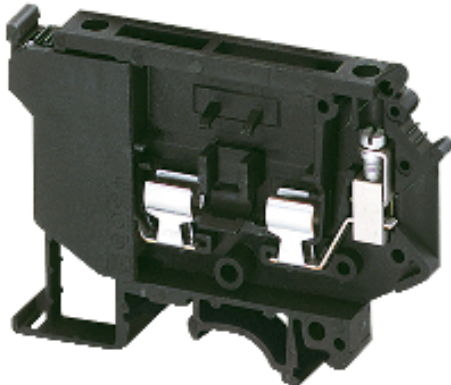
NSYTRV42SF5

Fuse disc. terminal, 4mm² 6.3A, 5x20mm fuse, 1x1 screw, black

Product availability : Stock - Normally stocked in distribution facility



Price* : 7.80 USD



Main

Range	Linery
Product name	Linery TR
Product or component type	Terminal block
Device short name	TRV
Device application	Protection
Terminal block type	Fused disconnect
Terminal block level	1
Mounting mode	Clip-on
Nominal cross section	0.01 in ² (4 mm ²)
Length	2.85 in (72.5 mm)
Colour	Black
Quantity per set	Set of 50

Complementary

Fuse size	5 x 20 mm
Width	0.32 in (8.2 mm)
Height	2.22 in (56.5 mm)
Connections - terminals	1 x screw terminal : upstream 1 x screw terminal : downstream
Number of terminals	2
Connection position	Sideways
Number of measurement input	0
Cable cross section	0...0.01 in ² (0.2...4 mm ²), flexible without 0.2...4 mm ² , solid or flexible with
Tightening torque	0.5...0.8 N.m
Wire stripping length	0.31 in (8 mm)

Tool type	Connection : screwdriver Disconnection : screwdriver
System Voltage	600 V CSA 600 V cURus 500 V conforming to EN/IEC 60947-7-1
[Ie] rated operational current	6.3 A conforming to EN/IEC 60947-7-1 6.3 A CSA 12 A cURus
Material	Polyamide 6/6 (insulating case)
Dielectric loss	0.01 at 1 MHz conforming to IEC 60250 0.01 at 1 MHz conforming to VDE 0303-T4
Dielectric constant	3.7 at 1 MHz
Resistivity	10000 $\Omega \cdot \text{cm}$ M $\Omega \cdot \text{m}$ conforming to IEC 60093 10000 $\Omega \cdot \text{cm}$ M $\Omega \cdot \text{m}$ conforming to VDE 0303-T30
Surface resistance	1000 M Ω G Ω conforming to IEC 60093 1000 M Ω G Ω conforming to VDE 0303-T30
Creep resistance	500 CTI (> 400 kV) conforming to IEC 60093 500 CTI (> 400 kV) conforming to VDE 0303-T30
Flame retardance	V0, thickness 0.03 in (0.8 mm) conforming to UL 94
Product weight	0.65 oz (18.3 g)
Range compatibility	Prisma - G Prisma - P Pragma Prisma - PH Prisma - Pack Spacial Kaedra TeSys
Product compatibility	Spacial enclosures

Environment

Product certifications	CSA cURus EAC
Dielectric strength	1000 V conforming to IEC 60243-1
Ambient air temperature for operation	-40...266 °F (-40...130 °C) conforming to IEC 60216-1 -40...266 °F (-40...130 °C) conforming to VDE 0304-T21

Ordering and shipping details

Category	21715 - IEC TERMINAL BLOCKS-NSY,AM1,DF6,GK1
Discount Schedule	CP5
GTIN	00785901943655
Nbr. of units in pkg.	50
Package weight(Lbs)	4.000000000000001E-2
Returnability	Y
Country of origin	TR

Offer Sustainability

Sustainable offer status	Green Premium product
RoHS (date code: YYWW)	Compliant - since 1052 - Schneider Electric declaration of conformity Schneider Electric declaration of conformity
REACH	Reference not containing SVHC above the threshold Reference not containing SVHC above the threshold
Product environmental profile	Available
Product end of life instructions	Need no specific recycling operations

Contractual warranty

Warranty period	18 months
-----------------	-----------
