

# ALUMINUM WELDMENT CONNECTORS

## DOUBLE CABLE TO FLAT PAD

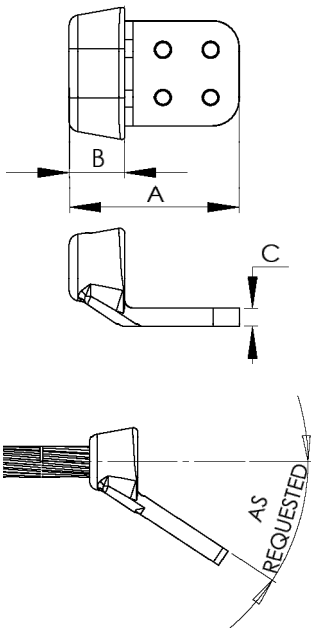


Featuring two-cable termination, the type WCP2 cast of a light-weight, corrosion resistant aluminum alloy makes an economical and reliable connection.

Side-formed NEMA pads are standard.

Any special tongue features will be readily provided if designated by adding a suffix to the catalog number.

**Example:** a 45 degree tongue for catalog number 18-725 should be ordered as 18-725-45.



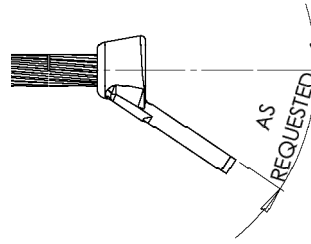
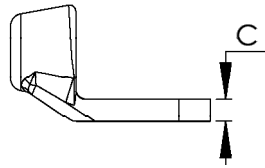
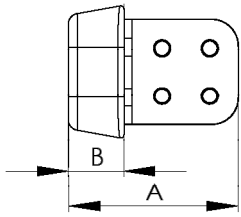
CATALOG NUMBER	PAD STYLE	CABLE SIZE		CONDUCTOR DIAMETER IN INCHES	HOLE DIAMETER	DIMENSIONS IN INCHES		
		AAC	ACSR			A	B	C
18-725	B	1/0	1/0	.355-.398	7/16	4 3/4	1 5/8	1/2
18-726	C	1/0	1/0	.355-.398	7/16	4 3/4	1 5/8	1/2
18-727	D	1/0	1/0	.355-.398	7/16	5 3/4	1 5/8	1/2
18-728	B	2/0	2/0	.399-.447	1/2	4 3/4	1 5/8	1/2
18-729	C	2/0	2/0	.399-.447	1/2	4 3/4	1 5/8	1/2
18-730	D	2/0	2/0	.399-.447	1/2	5 3/4	1 5/8	1/2
18-731	B	3/0	3/0	.448-.502	9/16	4 3/4	1 5/8	1/2
18-732	C	3/0	3/0	.448-.502	9/16	4 3/4	1 5/8	1/2
18-733	D	3/0	3/0	.448-.502	9/16	5 3/4	1 5/8	1/2
18-734	B	4/0	4/0	.503-.563	5/8	4 3/4	1 5/8	1/2
18-735	C	4/0	4/0	.503-.563	5/8	4 3/4	1 5/8	1/2
18-736	D	4/0	4/0	.503-.563	5/8	5 3/4	1 5/8	1/2
18-737	B	250-300	266.8(26/7)	.564-.642	11/16	4 3/4	1 5/8	1/2
18-738	C	250-300	266.8(26/7)	.564-.642	11/16	4 3/4	1 5/8	1/2
18-739	D	250-300	266.8(26/7)	.564-.642	11/16	5 3/4	1 5/8	1/2
18-743	B	336.4(19)-397.5(37)	336.4(36/1)-336.4(26/7)	.643-.721	3/4	4 3/4	1 5/8	1/2
18-744	C	336.4(19)-397.5(37)	336.4(36/1)-336.4(26/7)	.643-.721	3/4	4 3/4	1 5/8	1/2
18-745	D	336.4(19)-397.5(37)	336.4(36/1)-336.4(26/7)	.643-.721	3/4	5 3/4	1 5/8	1/2
18-746	B	400(37)-477(37)	397.5(18/1)-397.5(24/7)	.722-.795	7/8	4 3/4	1 5/8	1/2
18-747	C	400(37)-477(37)	397.5(18/1)-397.5(24/7)	.722-.795	7/8	4 3/4	1 5/8	1/2
18-748	D	400(37)-477(37)	397.5(18/1)-397.5(24/7)	.722-.795	7/8	5 3/4	1 5/8	1/2
18-749	B	500(61)-556.5(37)	477(24/7)-477(30/7)	.796-.883	15/16	5	1 5/8	1/2
18-750	C	500(61)-556.5(37)	477(24/7)-477(30/7)	.796-.883	15/16	5	1 5/8	1/2
18-751	D	500(61)-556.5(37)	477(24/7)-477(30/7)	.796-.883	15/16	6	1 5/8	3/4

Continued on next page

# ALUMINUM WELDMENT CONNECTORS DOUBLE CABLE TO FLAT PAD

SECTION

18-10



Continued from previous page

CATALOG NUMBER	PAD STYLE	CABLE SIZE		CONDUCTOR DIAMETER IN INCHES	HOLE DIAMETER	DIMENSIONS IN INCHES		
		AAC	ACSR			A	B	C
18-752	B	600(37)-650(91)	556.5(24/7)-556.5(30/7)	.884-.953	1	5	1 5/8	1/2
18-753	C	600(37)-650(91)	556.5(24/7)-556.5(30/7)	.884-.953	1	5	1 5/8	1/2
18-754	D	600(37)-650(91)	556.5(24/7)-556.5(30/7)	.884-.953	1	6	1 3/4	3/4
18-758	B	700(61)-800(61)	605(26/7)-636(30/19)	.954-1.039	1 1/8	5	1 1/2	1/2
18-759	C	700(61)-800(61)	605(26/7)-636(30/19)	.954-1.039	1 1/8	5	1 1/2	1/2
18-760	D	700(61)-800(61)	605(26/7)-636(30/19)	.954-1.039	1 1/8	6	1 3/4	3/4
18-761	B	817.5(61)-954(61)	653.9(18/3)-795(24/7)	1.040-1.140	1 3/16	5 3/8	2	1/2
18-762	C	817.5(61)-954(61)	653.9(18/3)-795(24/7)	1.040-1.140	1 3/16	5 3/8	2	5/8
18-763	D	817.5(61)-954(61)	653.9(18/3)-795(24/7)	1.040-1.140	1 3/16	6 3/8	2	1
18-767	B	1000(61)-1113(61)	954(45/7)-954(54/7)	1.141-1.216	1 1/4	5 1/2	2	1/2
18-768	C	1000(61)-1113(61)	954(45/7)-954(54/7)	1.141-1.216	1 1/4	5 1/2	2	5/8
18-769	D	1000(61)-1113(61)	954(45/7)-954(54/7)	1.141-1.216	1 1/4	6 1/2	2	1
18-773	B	1200(91)-1272(61)	1033.5(54/7)-1113(54/19)	1.217-1.300	1 3/8	5 1/2	2	1/2
18-774	C	1200(91)-1272(61)	1033.5(54/7)-1113(54/19)	1.217-1.300	1 3/8	5 1/2	2	5/8
18-775	D	1200(91)-1272(61)	1033.5(54/7)-1113(54/19)	1.217-1.300	1 3/8	6 3/8	2	1
18-785	B	1351.5(61)-1590(61)	1272(45/7)-1431(45/7)	1.301-1.454	1 1/2	6 3/4	2 3/8	1
18-786	C	1351.5(61)-1590(61)	1272(45/7)-1431(45/7)	1.301-1.454	1 1/2	6 3/4	2 3/8	1
18-787	D	1351.5(61)-1590(61)	1272(45/7)-1431(45/7)	1.301-1.454	1 1/2	6 3/8	2	1
18-787-SP(1700AAC)	D	1600(127)-1700(127)	1431(54/19)-1510.5(54/19)	1.455-1.506	1 9/16	6 3/8	2	1
18-787-SP(1590ACSR)	D	1750(127)	1590(54/19)	1.507-1.545	1 5/8	7 1/8	3	1 1/8
18-787-SP(2000AAC)	D	2000(91)(127)	1780(84/19)	1.546-1.680	1 3/4	7 1/8	3	1 1/8
18-787-SP(2156ACSR)	D	2250(91)	2034(72/7)-2167(72/7)	1.681-1.801	1 7/8	7 1/8	3	1 1/8
18-787-SP(2500AAC)	D	2500(127)	2312(76/19)-2515(76/19)	1.802-1.880	2	7 1/8	3	1 1/8
18-787-6HP-SP(3000AAC)	6HP	3000(127)	-	1.890-1.998	2 1/8	7 1/8	3	1 1/8
18-787-6HP-SP(3500AAC)	6HP	3500(127)	-	1.999-2.159	2 1/4	7 1/8	3	1 1/8