

Installation Efficient

Product Solutions



for Delivering Power, Data and AV

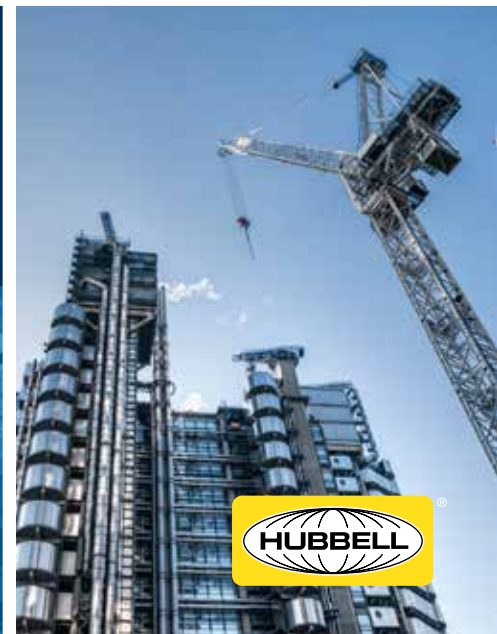


Table of Contents

SNAPConnect® Devices	4
Hubbell SystemOne Floor Boxes	6
Hubbell SystemOne Fire-Rated Poke-Throughs	8
Configurable and Pre-Wired Devices	10
Prefabricated Solutions	11
Pre-Wired Raceway	12
Wall/Trench and Underfloor Duct	13
Wire Basket Tray, Preformed Fittings	14
Pre-Wired Access Floor Box System	15
Energy Efficiency	16
Services	18





Tenant Build Out



Design/Build



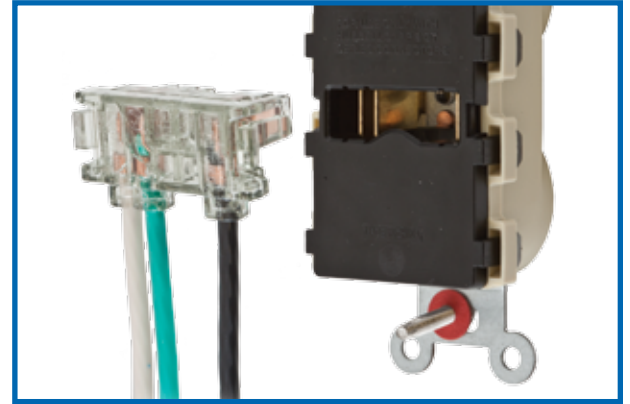
Service Work



SNAPConnect® Devices

SNAPConnect® is the ideal solution for larger projects with the potential for future change outs. From new construction and renovation to demanding locations, SNAPConnect's modular design eliminates exposed live parts and replaces pigtails, which ensures consistent, safe and reliable connections during rough-in installation. Once walls are up, the protective covering is removed and the connector is simply snapped into the device. Going forward, the modular design supports simple device change out by maintenance personnel.

- Eliminates device wiring at trim out, allowing journeymen to focus on more critical tasks
- Ability to energize and test circuits at rough-in and resolve issues during less critical project stages
- Widest breadth of modular devices on the market



Markets

- Healthcare
- Education
- Hospitality
- Commercial Construction
- Pre-Fab Assembly
- OEM



SNAPConnect® Receptacles

Description	15A 125V		20A 125V	
	Standard	Hospital Grade	Standard	Hospital Grade
Duplex, Finder Groove Face	SNAP5262WA	SNAP8200WA	SNAP5362WA	SNAP8300WA
Style Line® Decorator	SNAP2152WA	SNAP2172WA	SNAP2162WA	SNAP2182WA
Tamper-Resistant, Smooth Face	SNAP5262WTRA	SNAP8200WTRA	SNAP5362WTRA	SNAP8300WTRA
USB Charger, Commercial Grade	SNAP15USBW	SNAP8200USBW	SNAP20USBW	SNAP8300USBW
GFCI, Commercial Grade	GFRST15SNAPW	GFRST82SNAPW	GFRST20SNAPW	GFRST83SNAPW
GFCI, Tamper/Weather Resistant	GFTWRST15SNAPW	GFTWRST82SNAPW	GFTWRST20SNAPW	GFTWRST83SNAPW

Shown in white. Also available in black, brown, gray, ivory, light almond and red.

SNAPConnect® Extra-Heavy Duty Single Receptacles

Description	15A 125V		20A 125V	
	Standard	Hospital Grade	Standard	Hospital Grade
Standard	SNAP5261W	SNAP8210W	SNAP5361W	SNAP8310W
Tamper-Resistant	SNAP5261WTR	SNAP8210WTR	SNAP5361WTR	SNAP8310WTR

Shown in white. Also available in black, brown, gray, ivory, light almond and red.

SNAPConnect® Right Angle Pigtailed Connector for Use with Receptacles

Description	Wire Type	General Use	Assembled in USA
Clear right angle terminal with 6 inch leads #12 AWG THHN/THWN-2;	Solid	SNAP1RA	SNAP1RNA
Polycarbonate housing material	Stranded	SNAP2RA	SNAP2RNA





Installation Efficiency

Available in standard, heavy duty and extra heavy duty specification grades, SNAPConnect® can reduce installation time and meet National Electrical Code® specialty device requirements in commercial, institutional and healthcare applications.

The SNAPConnect® family of connectors, receptacles and switches includes a wide variety, including Tamper-Resistant (TR), USB Charger, Isolated Ground (IG), Power Indicating LED and Surge Suppressing.

Duplex receptacles are available in standard or decorator faces, 15 or 20A.

Labor Savings

Save up to 5 minutes and complete your job in a SNAP

Step 1: Rough-in the SNAPConnect® terminal instead of pigtails
Save one minute



Step 2: Remove the protective packaging, attach the SNAPConnect® device to the circuit
Save over three minutes



Step 3: Secure the mounting screws, attach the wallplate and the job is complete
Save over a minute



Supporting Literature



Additional Resources:

- Specification Sheets
- Videos
- eLearning
- Customer Drawings
- Installation Instructions
- Section 26 Specifications

Related Products

SNAPConnect® Circuit Tester with GFCI Test Button

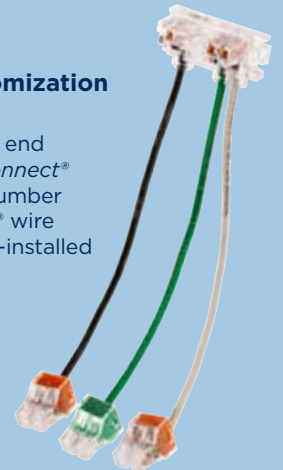
3-in-1 Tester

- Tests proper wiring of the SNAPConnect® receptacle terminal
- Tests proper wiring of standard receptacles
- Tests GFCI receptacles



Terminal Customization

- Add -M2 to the end of any SNAPConnect® terminal part number to have WAGO® wire connectors pre-installed



SNAPConnect® Specification Grade Toggle Switches

Description	15A, 120-277V AC	20A, 120-277V AC
Single Pole	SNAP1201WNA	SNAP1221WNA
3-Way	SNAP1203WNA	SNAP1223WNA
Illuminated, Single Pole	SNAP1201ILWNA	SNAP1221ILWNA
Illuminated, 3-Way	SNAP1203ILWNA	SNAP1223ILWNA
Pilot Light, Single Pole	SNAP1201PLWNA	SNAP1221PLWNA

SNAPConnect® Specification Grade Style Line® Decorator Switches

Description	15A, 120-277V AC	20A, 120-277V AC
Single Pole	SNAP2101WNA	SNAP2121WNA
3-Way	SNAP2103WNA	SNAP2123WNA
Illuminated, Single Pole	SNAP2101ILWNA	SNAP2121ILWNA
Illuminated, 3-Way	SNAP2103ILWNA	SNAP2123ILWNA
Pilot Light, Single Pole	SNAP2101PLWNA	SNAP2121PLWNA

Shown in white. Also available in black, brown, gray, ivory, light almond and red.

SNAPConnect® Right Angle Pigtailed Connector for Use with Switches

Clear right angle terminal with 6-inch leads #12 AWG THHN/THWN-2, 600V wire

Description	Solid Wire	Stranded Wire
Single Pole (3 Wires)	SNAPSP1NA	SNAPSP2NA
Single Pole with Pilot	SNAPSPP1NA	SNAPSPP2NA
3-Way (4 Wires)	SNAP3W1NA	SNAP3W2NA



Hubbell SystemOne Recessed Floor Boxes

Hubbell SystemOne creates a common look for fire-rated poke-throughs and floor boxes. This innovative system allows you to create custom solutions for multi-service applications that require both in-floor boxes and fire-rated poke-throughs. Regardless of capacity or installation, Hubbell SystemOne provides a uniform look throughout an entire building—whether the power, data, and AV are being delivered in the floor or through the floor.

- Fully adjustable floor boxes solve pre- and post-pour adjustment challenges
- Data and AV open system mounting plates satisfy customer requirements
- Same round cover design offer synergy between floor box and FRPT installations



Markets

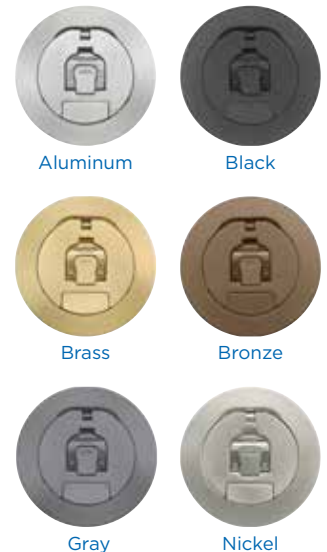
- Commercial Construction
- Education Facilities
- Hospitality
- Retail
- Stadiums



Hubbell SystemOne Floor Boxes

Description	4" Round Covers	6" Round Covers		8" Round Covers		
			2-Gang	4-Gang	6-Gang	10-Gang
Floor Boxes	Non-Metallic	CFBS1R4PFB*	—	—	—	—
	Stamp Steel	CFBS1R4SFB*	CFB2G25R CFB2G30R	CFB4G25R CFB4G30R	CFB6G30R	CFB10G55R
	Corrosion Resistant	CFBS1R4SFBCR*	CFB2G25CR CFB2G30CR	CFB4G25RCR CFB4G30RCR	CFB6G30RCR	CFB10G55RCR
Device Mounting Plates	Decorator	S1R4SPSTYLE	FBMPREC	FBMPREC	FBMPREC	FB10MPREC
	Duplex	S1R4SPDUPLEX	FBMPDUP	FBMPDUP	FBMPDUP	FB10MPDUP
Covers	Aluminum	CFBS1R4CVRALU	CFBS1R6CVRALU	CFBS1R8CVRALU	CFBS1R8CVRALU	CFBS1R8CVRALU
	Black	CFBS1R4CVRBLK	CFBS1R6CVRBLK	CFBS1R8CVRBLK	CFBS1R8CVRBLK	CFBS1R8CVRBLK
	Brass	CFBS1R4CVRBRS	CFBS1R6CVRBRS	CFBS1R8CVRBRS	CFBS1R8CVRBRS	CFBS1R8CVRBRS
	Bronze	CFBS1R4CVRBRZ	CFBS1R6CVRBRZ	CFBS1R8CVRBRZ	CFBS1R8CVRBRZ	CFBS1R8CVRBRZ
	Gray	CFBS1R4CVRGRY	CFBS1R6CVRGRY	CFBS1R8CVRGRY	CFBS1R8CVRGRY	CFBS1R8CVRGRY
	Nickel	CFBS1R4CVRNKL	CFBS1R6CVRNKL	CFBS1R8CVRNKL	CFBS1R8CVRNKL	CFBS1R8CVRNKL

Note: *Requires CFBS1R4CUP



Supporting Literature



Installation Efficiency

Hubbell SystemOne 4" recessed floor box features a patented installation cup and prewired 4-outlet plates that reduce labor costs.

Hubbell SystemOne 2-, 4-, 6- and 10-gang floor boxes are available with round or rectangular covers, prewired device plates include receptacles, extender caps for polished concrete installations or deep concrete pours.

Floor box stand eliminates the need for concrete blocks and speeds up installation of floor boxes during deeper concrete pours.

Labor Savings

Hubbell SystemOne Adjustable Mounting Cup

Installation Ease & Flexibility

Designed to allow for upwards adjustability in $\frac{1}{32}$ " increments, our Adjustable Mounting Cup (AMC) speeds installation and supports a variety of floor height installations. The AMC is dropped into the floor box collar and rotated clockwise to set the height. Fully adjustable until the ground plate is installed, the AMC is locked into place by the plate, preventing unwanted adjustment of height.

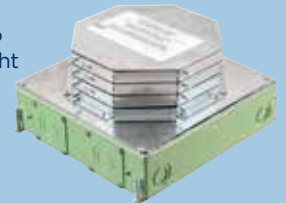
Additional Resources:

- Specification Sheets
- Videos
- BIM Models
- Customer Drawings
- eLearning
- Installation Instructions
- Section 26 Specifications

Related Products

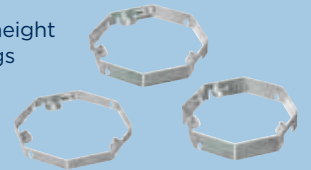
Pre-Pour Stackable Rings

- Stackable rings to increase box height by $\frac{3}{4}$ " per ring



Post-Pour Adjustment Rings

- Finished floor height adjustment rings



PVC Floor Box Stand

- Pre-pour PVC stand increases box height 2.5-4.0 inches within the concrete pour



Easy Mount Device Plates

Easy Mount device plates allow for a device to be mounted to the plate and wired outside of the floor box. The device and plate assembly are then easily installed and secured with one stud that locates the plate and one screw to secure it.

This patent-pending device fastening method maximizes efficiency while reducing install time and comes standard with all device plates for 2-, 4-, and 6-gang boxes.

Pre-wired duplex or Style Line® receptacles with 8-inch stranded leads are factory installed into the plates for even more labor savings. Tamper-resistant pre-wired devices are also available.



2-, 4-, 6-gang box plate



10-gang box plate

Hubbell SystemOne Fire-Rated Poke-Throughs

Hubbell SystemOne Recessed Fire-Rated Poke-Throughs (FRPT) enhance functionality by providing increased power, data and AV capacity. Our 4", 6", 8" and 10" product offering will meet every requirement for today's applications and for future expansion. Pre-wired receptacles save time on the job-site when it really counts. The premarked controlled receptacles offer compliance to energy efficiency codes and standards. The open system data/AV sub-plates eliminate special adapters.

- Universal round recessed cover design and six finishes
- Excellent solution for retrofit and new construction
- Meets low voltage requirements for high capacity multimedia applications
- "Step down" allows wiring, installation and removal from the floor above
- ADA compliant



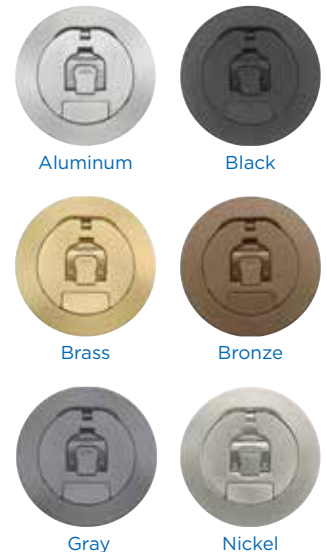
Markets

- Commercial Construction
- Education Facilities
- Tenant Build Out
- Renovation



Hubbell SystemOne Fire-Rated Poke-Throughs

Description	4" Round Covers	6" Round Covers	8" Round Covers	10" Round Covers
Fire-Rated Poke-Throughs	S1R4PTFIT	S1R6PTFIT	S1R8PTFIT	S1R10PTFIT
Device Mounting Plates	Quad	S1R4SPQUAD	S1R6SPH	—
	Quad Marked Controlled	—	S1R6SPHC4	—
	Duplex	—	S1R6SPZ	S1R8PSPZ
	Duplex Marked Controlled	—	S1R6SPZC	S1R8PSPZC
	Duplex Blank	S1R4SPDUPLICATE	S1R6SPI	S1R8CSPI
StyleLine Blank	S1R4SPSTYLE	S1R6SPK	S1R8CSPK	S1R10CSPD
2-Gang StyleLine AV	—	S1R6SPW	S1R8CSPM	S1R10CSPM
Covers	Aluminum	S1R4CVRALU	S1R6CVRALU	S1R8CVRALU
	Black	S1R4CVRBLK	S1R6CVRBLK	S1R8CVRBLK
	Brass	S1R4CVRBRS	S1R6CVRBRS	S1R8CVRBRS
	Bronze	S1R4CVRBRZ	S1R6CVRBRZ	S1R8CVRBRZ
	Gray	S1R4CVRGRY	S1R6CVRGRY	S1R8CVRGRY
	Nickel	S1R4CVRNKL	S1R6CVRNKL	S1R8CVRNKL



Installation Efficiency

Hubbell SystemOne Recessed Fire-Rated Poke-Throughs deliver unmatched capacity and combinations of power, data and AV. Recessed connectivity, a low-profile flange, and egress doors that hinge inwards deliver improved safety and device protection. Choose from multiple sub-plate layouts and six cover finishes to support customized use and a consistent look across installation.



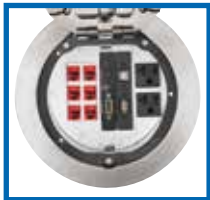
10 Inch Fire-Rated Poke-Through

Sub-plate layout for the center four gangs of the ten inch FRPT allows for maximum power or AV capacity. Perimeter sub-plates complement the power or AV in the center four gangs. Additionally, these plates can be exchanged for other low voltage compatible plates.



8 Inch Fire-Rated Poke-Through

Sub-plate layout for the center three gangs of the eight inch FRPT can be configured to accommodate power and/or AV. Perimeter sub-plates complement the AV or data in the center three gangs. Additionally, these plates can be exchanged for other low voltage compatible plates.



6 Inch Fire-Rated Poke-Through

An industry first, the 60/40 sub-plate layout allows for unmatched capacity with up to 12 keystone jacks and one 20A duplex. 50/50 sub-plate splits that accommodate AV and data with two Style Line® decorator devices are also available.



4 Inch Fire-Rated Poke-Through

The quad sub-plate can be wired on one circuit or two, and includes 12 inches of stranded wire. 2x2 sub-plates accommodating a duplex or Style Line® device and up to two keystone jacks are also available.

Pre-Pour Tubes

Hubbell's Pre-Pour Tubes eliminate the cost and time of concrete core drilling for fire-rated poke-throughs. The tube provides a clean, concentric hole ready for FRPT installation and are easy to remove. All hardware is included.



Pre-Pour Tubes

Includes all hardware

Diameter	Catalog Number
4 inches	S1R4PPT
6 inches	S1R6PPT
8 inches	S1R8PPT
10 inches	S1R10PPT

Resources

Supporting Literature



Additional Resources:

- Videos
- BIM Models
- Customer Drawings
- eLearning
- Installation Instructions
- Section 26 Specifications

Related Products

Power Junction Box

- Allows for pre-termination of building wires from above

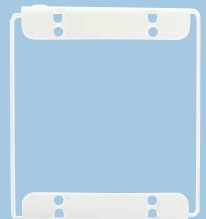


Extension Kits

- Provides additional wiring chamber space for larger data/AV modules and jacks



S1R6SPEXT



S1R8CSPEXT

Abandonment Plates

- When an FRPT is no longer required, the 4," 6," 8," and 10" abandonment plates attached to the installed fittings maintain fire and scrub water ratings

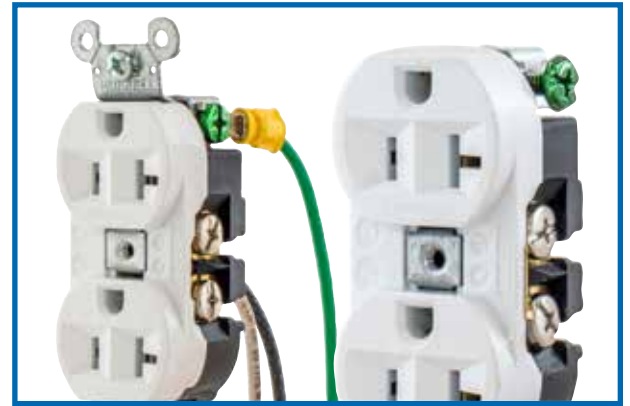


Configurable & Pre-Wired Devices

Hubbell's most popular 15 and 20 Amp standard receptacles are ready to meet your service, installation and design specifications. Ordered as a Hubbell Receptacle Special, our Duplex and Style Line® Decorator, Tamper-Resistant, Hospital Grade and SNAPConnect® are made to spec and modified to speed installation. All orders arrive in bulk packaging ready to install out of the box.

Common modifications include:

- Ear or bridge removal
- Mounting screws and autoground removal
- Wire leads
- Push-in connectors, ring or fork terminals



Markets

- Education
- Hospitality
- Commercial Construction
- Pre-Fab Assembly
- OEM



Prewired Tamper-Resistant Specification Grade Receptacles

Description	Wire leads	15A 125V	20A 125V
Duplex, smooth nylon face, side wired only, self-grounding	8" solid	CR15WHITRP1	CR20WHITRP1
	8" stranded	CR15WHITRP2	CR20WHITRP2
Style Line® decorator duplex, smooth nylon face, back and side wired, self-grounding	8" solid	DR15WHITRP1	DR20WHITRP1
	8" stranded	DR15WHITRP2	DR20WHITRP2

Shown in white. Also available in black, brown, gray, ivory and light almond.



Hubbell Receptacle Special Ordering Process

- 1 Contact your Hubbell sales representative to discuss your customization needs.
- 2 After an order is placed, the receptacles will be made to specification, inspected, bulk packed and shipped.
- 3 Factory produced and delivered on time to keep your project on schedule!



Learn more

Find your Hubbell sales representative at hubbell.com/wiringdevice-kellems/en, under the Company tab.

Prefabricated Solutions

Hubbell's Rough-in Ready® System of pre-fabricated electrical support products is ideal for projects requiring repetitive wiring installation. All pre-fabricated assemblies and cables are labeled to match a detailed layout drawing. Any electrical project will profit from a Rough-in Ready® system, but projects with many similar rooms provide the biggest benefit to the installer.



- **Residential:** Apartments, Military and Campus Housing, Condominiums
- **Hospitality:** Hotels, Motels, Casino Resorts, Conference Centers
- **Healthcare:** Hospitals, Healthcare Facilities, Assisted Living

Job Cost Savings

Potential Advantage on Bid Day Calculator

Job Cost Using the Rough-in Ready® System		Job Cost if You Were to Hardwire the Same Openings	
\$69,832.00	Rough-in Ready® System Cost	\$36,789.43	Estimated Material Cost
401.29	Projected Installation Hours	2,205.70	Estimated Installation Hours
45.00	Contractor's Fully Burdened Labor Rate	45.00	Contractor's Fully Burdened Labor Rate
\$87,889.00	Total Installed Job Cost	\$136,045.93	Total Installed Job Cost

	1,804.41	Total Hours Saved
	81.81%	Total Labor Saving
Total Savings	\$48,155.97	Total Job Cost Savings or Your Potential Advantage on Bid Day
	35.40%	Total Percentage of Job Cost Savings

Supporting Literature



Additional Resources:

- Customer Drawings
- Installation Instructions

Related Products

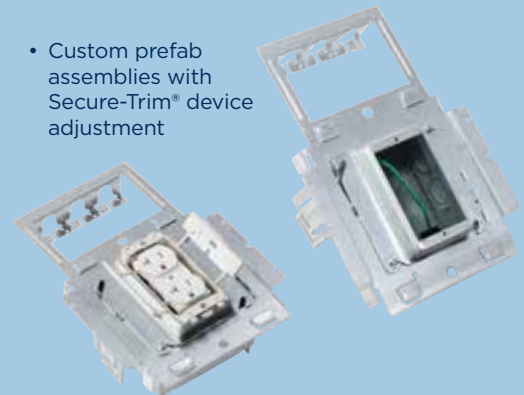
Prefabricated Components

- Time-saving exclusive components for your prefab shop



Prefabricated Assemblies

- Custom prefab assemblies with Secure-Trim® device adjustment



Hubbell Rough-in Ready® Ordering Process

- 1 Contact your Hubbell sales representative and provide specifications and drawings for the project.
- 2 Once quotation is accepted and purchase order is issued, Hubbell will provide a formal submittal for approval.
- 3 Product will be delivered in clearly marked skids by floor and area, depending on your job site requirements.



Learn more

Find your Hubbell sales representative at hubbell.com/wiringdevice-kellems/en, under the Company tab.

Pre-Wired Raceway

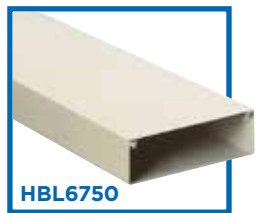
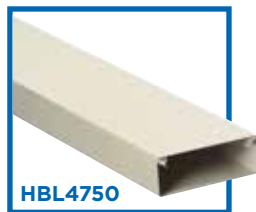
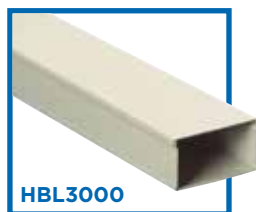
Facility use has changed, and increased power and data requirements must keep pace with new demands. Hubbell Pre-Wired Raceway Systems accommodate changing requirements while keeping fast track projects on schedule. Our Application Engineers are your partner, completing the take off and providing quotes, preparing layout drawings and shipping products. Available in aluminum, steel and non-metallic, factory pre-cut and pre-wired lengths of raceway arrive ready for installation with all device cover plates, end caps, elbows and other required fittings. And, since aluminum raceway covers and cover plates are cut from the same extrusion, aesthetics are guaranteed.

- Handling and installation time reduces labor costs by up to 45%
- Issue one purchase order for a complete raceway system
- SNAPConnect® devices may be used for future proofing the installation



Markets

- Education
- Retail
- Healthcare
- Research Laboratories
- Commercial Offices
- Work Bench Solutions



Hubbell Pre-Wired Raceway Ordering Process

- 1 Contact your Hubbell sales representative and provide specifications and drawings for the project.
- 2 Upon receipt of an order, Hubbell's application engineer will provide a detailed product submittal for customer approval.
- 3 Raceway is shipped in clearly marked cartons with building number, floor, and/or room number referenced for easy job site installation.



Learn more

Find your Hubbell sales representative at hubbell.com/wiringdevice-kellems/en, under the Company tab.

Wall/Trench & Underfloor Duct

Hubbell offers a comprehensive offering of steel and aluminum duct products. Wall and trench duct is heavily utilized in the healthcare industry. Underfloor duct is ideal for hotel, retail, casino, and convention center applications. Hubbell's ability to design customized products for challenging projects can be an important resource for contractors and end users looking for the right product to meet demanding applications. Duct is available in a wide variety of widths, depths, and styles.



Labor Savings

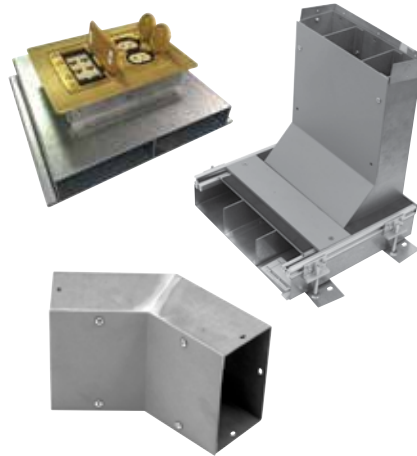
Reduce Installation Time

Factory cut to length duct reduces labor time

Duct comes with dividers installed, eliminating on-site assembly

Professional take off service saves time and ensures accuracy

Factory compartmentalized underfloor duct reduces installation labor cost



Hubbell Duct System Ordering Process

- 1 Contact your Hubbell sales representative and provide job name, location, drawings, and specifications for the duct project.
- 2 Quotation and production lead time will be provided. Hubbell includes ground freight charges in each quotation. If submittals are needed, these will be completed once purchase order is issued to Hubbell.
- 3 All trench duct and wall duct orders are shipped under a generic TW prefix number, while floor duct projects are shipped under a generic FD part number.



Learn more

Find your Hubbell sales representative at hubbell.com/wiringdevice-kellems/en, under the Company tab.

Resources

Supporting Literature



Additional Resources:

- BIM Models
- Videos
- Customer Drawings
- Installation Instructions
- Section 26 Specifications

Related Products

Healthcare Outlet Assemblies

Expand outlet availability in patient care areas without renovating rooms

- Only UL listed,* CMS+ approved plug strip for patient care areas on the market today
- 15A and 20A models with four or six outlets available
- Mounting bracket available for easy attachment to IV poles
- May be ordered with or without surge protection



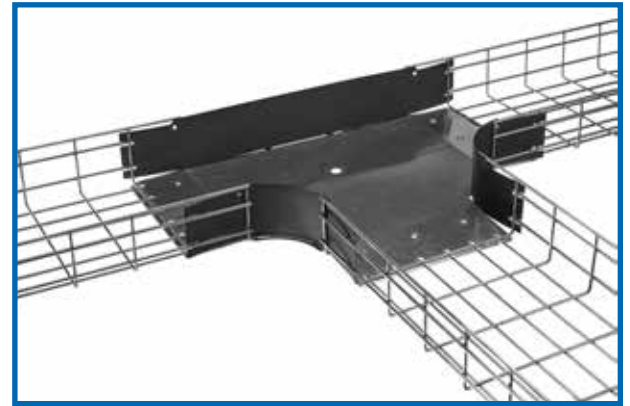
*UL listed to UL2930 Health Care Outlet Assemblies
†Centers for Medicare and Medicaid Services



Wire Basket Tray

Hubbell Wire Basket Tray Systems are flexible and customized solutions that support a range of overhead and raised floor cable management applications. Two of our time- and material-saving options include Preformed fittings and No-Splice supports. Available in multiple sizes, Hubbell Pre-Formed Fittings reduce material costs and offer time savings over traditional cutting and splicing. No-Splice supports reduce material costs and ensure the tray's bottom rails are locked together.

- **Preformed fittings reduce labor and installation by 90% versus traditional cutting and splicing**
- **T-weld construction eliminates possible snags when pulling wire**
- **Easy to cut, bend and splice for customization and field fabrication**



Markets

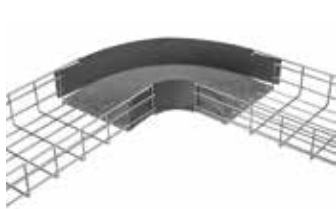
- Data Centers
- Commercial Construction
- Stadiums
- Office Buildings



Preformed Fittings

Tray	2" Deep Tray			4" Deep Tray			6" Deep Tray		
	90 Degree	Tee	45 Degree	90 Degree	Tee	45 Degree	90 Degree	Tee	45 Degree
4"	HBTR0204	HBTT0204	HBT450204	HBTR0404	HBTT0404	HBT450404	-	-	-
6"	HBTR0206	HBTT0206	HBT450206	HBTR0406	HBTT0406	HBT450406	-	-	-
8"	HBTR0208	HBTT0208	HBT450208	HBTR0408	HBTT0408	HBT450408	HBTR0616	HBTT0608	HBT450608
12"	HBTR0212	HBTT0212	HBT450212	HBTR0412	HBTT0412	HBT450412	HBTR0612	HBTT0612	HBT450612
16"	HBTR0216	HBTT0216	HBT450216	HBTR0416	HBTT0416	HBT450416	HBTR0616	HBTT0616	HBT450616
18"	HBTR0218	HBTT0218	HBT450218	HBTR0418	HBTT0418	HBT450418	HBTR0618	HBTT0618	HBT450618
20"	HBTR0220	HBTT0220	HBT450220	HBTR0420	HBTT0420	HBT450420	HBTR0620	HBTT0620	HBT450620
24"	HBTR0224	HBTT0224	HBT450224	HBTR0424	HBTT0424	HBT450424	HBTR0624	HBTT0624	HBT450624

Note: Add **BK** suffix for black base tray. Add **SW** suffix for steel side walls.



No Splice Supports

Tray	Center Support	Ceiling Support
6"	HBTNSCTRS6	-
8"	HBTNSCTRS8	-
12"	HBTNSCTRS12	HBTNSCLGS12
16"	HBTNSCTRS16	HBTNSCLGS16
18"	HBTNSCTRS18	HBTNSCLGS18
20"	HBTNSCTRS20	HBTNSCLGS20
24"	HBTNSCTRS24	HBTNSCLGS24

Note: Install every 5 feet.
Splice hardware included.



Pre-Wired Access Floor Box System

Custom engineered and wired to project specifications, the Hubbell CONNEXION 2.0 Zone Distribution System is a factory-assembled, modular plug-n-play system for raised floor installations. The Zone Distribution Box (ZDB) in conjunction with multi-conductor extender cables, splitters, and point of service units create a flexible, easy to use, 20 amp modular wiring system.

CONNEXION 2.0 also includes a furniture feed distribution box that delivers power, voice and data to powered furniture at the floor level for a clean, aesthetically-pleasing installation.



Labor Savings

Reduce Administrative and Job Site Costs

Hubbell takeoff service reduces administrative expenses and time

Eliminates job site fabrication time and cuts installation labor

Plug-n-play system is tested at the factory for trouble-free installation

Available in four system configurations for tailored wiring



Hubbell Pre-Wired Floor Box Ordering Process

- 1 Contact your local Hubbell sales representative and provide project information, including specifications and drawings.
- 2 Hubbell application engineer will provide system design, quotation, and submittal for customer approval.
- 3 Product is shipped as required by installer to the job site for a labor saving installation. Order is manufactured in our US factory, and ships to the job site ready for installation.



Learn more

Find your Hubbell sales representative at hubbell.com/wiringdevice-kellems/en, under the Company tab.

Resources

Supporting Literature



Additional Resources:

- Installation Videos
- BIM Models
- Videos
- Customer Drawings
- Installation Instructions
- Section 26 Specifications

Related Products

Zone Distribution Boxes

- The main interface between the existing electrical system and the labor-saving CONNEXION 2.0 system



Splitters

- Increases the number of floor boxes fed from a single Zone Distribution Box



RAFB4 Series Boxes

- Fits into the same size hole as an 8" round air diffuser



Adaptive Technology Occupancy Sensors

Adaptive Technology is Hubbell's patented breakthrough in advanced controls that eliminates manual adjustment. Available on the majority of our occupancy/vacancy low voltage and switch sensors, smart microprocessors constantly monitor the controlled area and adjust the sensitivity and timer based on environmental history and automatically adjust for seasonal changes, modified airflow, furniture layout or occupancy pattern changes. No initial configuration is required, making this an "install and forget" solution.

- Lower energy costs and utility bills
- No need to manually adjust for occupancy changes
- Install and forget installation



Markets

- Education
- Hospitality
- Commercial Construction
- Office Buildings
- Healthcare



Adaptive Technology Wall Switch Sensors

Description	Single Circuit (1 button)	Dual Circuit (2 buttons)
Dual (Ultrasonic and Passive Infrared)		
Selectable Manual/Auto ON	AD2000W1	AD2000W22
Manual ON (Vacancy)	AD2001W1	AD2001W22
Passive Infrared with 0-10V Dimming		
Selectable Manual/Auto ON	APD2000W1	—
Manual ON (Vacancy)	APD2001W1	—

24V DC, 33mA. Requires a CU300xx series control unit.

Dual (Ultrasonic and Passive Infrared)

Selectable Manual/Auto ON	AD2240W1	AD2240W2
Manual ON (Vacancy)	AD2240W1	AD2241W2

Note: Also available in black, gray, ivory and light almond.



Low Voltage Adaptive Technology Wall Mount Sensors

Description	Coverage	Catalog Number
Dual (Ultrasonic and Passive Infrared)		
Sensor 32kHz with photocell and isolated relay	1600 sq ft	ATD1600WRP

Passive Infrared Sensor

For aisle and high bay applications, with photocell and isolated relay 120 linear ft **ATP120HBRP**

Note: All wall mount sensors must use a CU300M control unit.



Adaptive Technology Ceiling Mount Sensors

Description	Voltage	Coverage Area	
		2000 sq. ft. (360°)	1000 sq. ft. (180°)
Dual (Ultrasonic and Passive Infrared)			
Low voltage sensor*	24V DC	ATD2000CRP	ATD1000CRP
Line voltage sensor	120-277V AC	ATD2000CL	ATD1000CL
Passive Infrared			1500 sq. ft. (360°)
Low voltage sensor*	24V DC	—	ATP1500CRP
Line voltage sensor	120-277V AC	—	ATP1500CL

Note: Low voltage ceiling sensors must use a CU300M control unit.

*Low voltage sensors include isolated relay and photocell.



Low Voltage Dimming Control

The Hubbell Low Voltage Wall Switch with 0-10V Dimming is the absolute choice for applications requiring occupancy-based control and low voltage dimming.

Because of its simplicity in design and operation, the device is ideal for use in private offices, conference rooms, classrooms and multimedia learning centers.



Labor Savings

Energy Efficient Dimming Control

Installation Speed & Flexibility

The device's compact design and dual functionality allow the use of a smaller electrical wall box, simplifies installation and speeds up commissioning process. Also, the device is fully compatible with existing Hubbell load control units. There is no need to replace with newer systems.



Low Voltage Wall Switches with 0-10V Dimming

Description	Catalog Number
Manual ON operation mode	DSM010W
Auto ON operation mode	DSL010W
Bi-Level Switching Control: 1 Load Auto ON 1 Load Manual ON	DSC010W

Shown in white. Also available in ivory, light almond and gray.



Control Unit

Description	Catalog Number
Manual ON operation; 100-277V AC, 50/60Hz for use with 1-4 ATD, ATU, ATP and AD2240 series sensors	CU300M



Supporting Literature



Additional Resources:

- Videos
- Specification Sheets
- FAQ Reference Guide
- Customer Drawings
- Installation Instructions
- Section 26 Specifications

Related Products

Switched Receptacles for Automatic Receptacle Control

- Wireless receiver capable of controlling additional downstream receptacles



Photocell for Automatic Dimming Control

- Efficiently blends natural and artificial light to provide precise daylight harvesting control



Heavy Duty Control Unit

- Provides power to sensors for automatic receptacle control



Services

Ready to increase installation efficiency with quality products? We're here to help.

Space design, jobsite challenges and wiring systems are changing. We can help make the most of the newest innovations so you can focus on successfully completing more projects in less time.

From new construction and renovations to industrial, commercial, medical or residential structures, we manufacture quality systems that reduce installation time and support the latest design aesthetics. We also partner with several companies to make specifying, installing and using Hubbell products easy, and efficient.

Project Design

Our team of Application Engineers support project design work, from bid to installation for several Hubbell product lines including:

- Trench, wall and underfloor duct
- Pre-wired raceway
- CONNEXION plug-n-play raised access floor power distribution systems
- Lighting control/occupancy sensor layout and design

Takeoff Services

Hubbell Application Engineers can perform pre- or post-bid takeoffs for a variety of product lines:

- Wiring Devices
- Floor Boxes
- Fire-Rated Poke-Throughs
- Wire Basket Tray Systems
- Sensors
- Surface Raceway
- Power Poles

Submittal Builder

Hubbell's industry best submittal builder is available for distributors, contractors, and others on Hubbell's public website. Submittals can include all or some of the following documents: catalog page, data sheet, drawing and installation instructions. A link to the submittal, or a PDF copy, can easily be emailed.

- Fast
- Professional
- Thorough

Hubbell Duct Solutions Quote No: ABC-1234-2018

Date: 8/1/2018
Job Name: Memorial Hospital Renovation
Location: United States of America
Contractor: ACME Electric

Qty	Catalog Number	Description	Price
1	CT Scan RM 1105		
1	OKA/D6-2C-1/4	Two Compl Trench Duct 3-1/2 x 6 x 72 with 1/4 Cover	
1	OKA/D6-2C-1/4 x 24	Two Compl Trench Duct 3-1/2 x 6 x 24 with 1/4 Cover	
2	OKL25/D6-2C-1/4	Two Compl Trench Duct Horizontal 25 Elbow 3-1/2 x 6	
2	OKE/D6	Trench Duct End Cap 3-1/2 x 6	
1	OWR/DF6	Trench to Wall Duct Riser 3-1/2 x 6 Flush	
3	OWA/D6S	Wall Duct 3-1/2 x 6 x 60 with Surface Cover	
4	OWE/D6S	Wall Duct End Cap 3-1/2 x 6 Surface	
3	OWA/DF6	Wall Duct 3-1/2 x 6 x 90 with Flush Cover	
2	OWE/DF6-6	Wall Duct Flush to Surface Adapter 6 - 6	
3	OWE/DF6	Wall Duct End Cap 3-1/2 x 6 Flush	
9	OWP/D	Wall Duct Divider	
1	GRDM-15	15" Grommet Material	

Example Duct Takeoff and Quotations

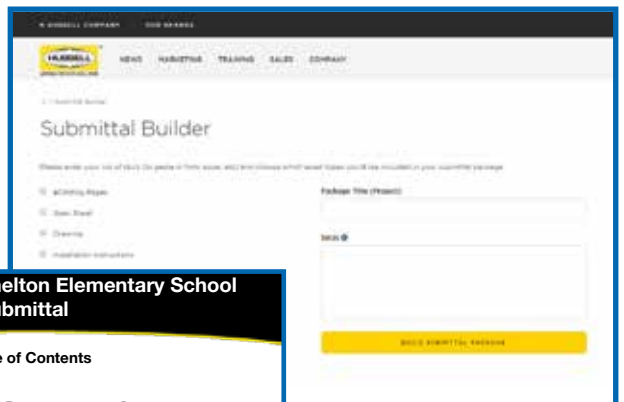
Project Name: Community College
Address: _____
Take-off: Aluminium Raceway
Date on Drawing: 5/7/2018
Prepared By: _____
Checked By: _____

Sl.No.	Product	Catalog No.	Qty	Unit	Catalog Links
1	Raceway-1				
	Single Channel Base	HBLALU3800B10	500	ft	Click Here
	Single Channel Cover	HBLALD1C5	500	ft	Click Here
	Wire Clip	HBLALJWC	150	ea	Click Here
	Coupling (Pair)	HBLALJ01	25	ea	Click Here
	Blank End Fitting	HBLALJ310B	80	ea	Click Here
	Duplex receptacle on Raceway		72	ea	
	Coverplate for Duplex receptacle on Raceway		72	ea	
	Emergency Duplex receptacle on Raceway		50	ea	
	Coverplate for Emergency Duplex receptacle on Raceway		50	ea	
	Emergency GFI Duplex receptacle on Raceway		50	ea	
	Coverplate for Emergency GFI Duplex receptacle on Raceway		50	ea	

Scale Notes:
1. The length measuring tool used for our takeoff activity is PDF Exchange Viewer. The default scale in this tool is 1 inch = 1 inch.
2. For this Project, Numerical Scale from the drawing sheet is: 1/8" = 1'-0". So 1'-0" = 8 inches. Hence each section length measured in inches from the drawing sheet should be divided by 8 to get the actual length in feet.
3. To ensure the correctness of scale, we have also measured the downways and have ensured as follows.

General Notes:
1. We have tried assigning catalog numbers referring raceway descriptions given in drawing sheets/Specsheets.
2. Conduit Raceways are not considered in this takeoff.
3. Receptacles on raceways are calculated for the purpose of coverplates calculations only.

Example Takeoff



Create a submittal
at www.hubbell-wiring.com

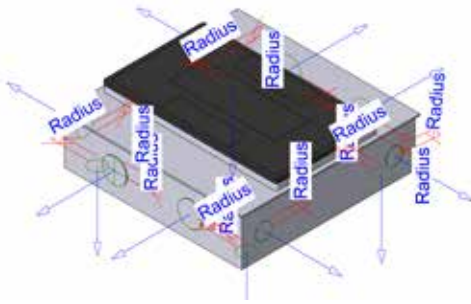
Shelton Elementary School Submittal

SKU	Asset Type	Page
SNAP5362WA	eCatalog Page	2
	CAD Drawing	3
	Installation Instructions	4
GFRST20SNAPW	eCatalog Page	6
	CAD Drawing	7
	Installation Instructions	8
SNAP20USBW	eCatalog Page	11
	CAD Drawing	12
	Installation Instructions	13
SNAP2RA	eCatalog Page	14
	CAD Drawing	15
	Installation Instructions	16
SNAPSP2NA	eCatalog Page	18
	CAD Drawing	19
	Installation Instructions	20

Product Resources

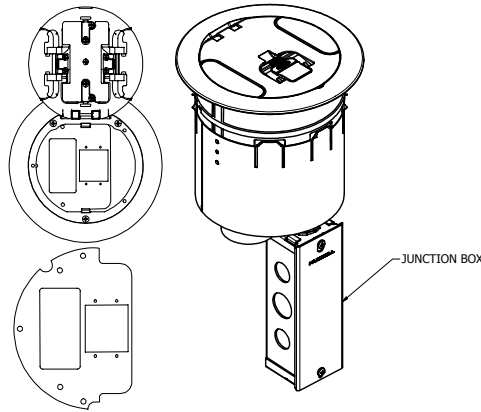
CAD and PDF drawings are available for download on Hubbell's public website with detailed dimensional information on all Hubbell products.

A large library of Isometric and Flat product drawings for use in engineering plans are also housed on Hubbell's public website. These are ideal for ensuring that the electrical contractors are clear on the product that is required for all varieties of projects.



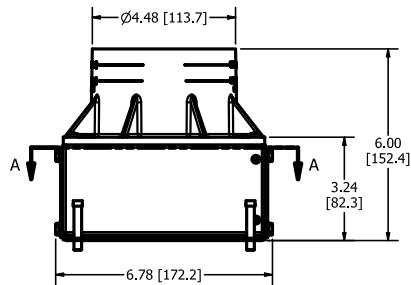
Comprehensive library of BIM models for design engineers and design/build contractors

Flat and isometric drawings for use on design engineer plans



S1R6SPX

S1R6PTFIT



Product drawings with dimensional data in PDF and DWG formats

Our Partners

Hubbell has partnered with a number of companies that provide additional resources to our design engineer customers and our design build contractors.



BSD Softlink

- Hubbell and BSD Softlink partner to provide Hubbell specifications to subscribers of BSD's specification service.



BIM Object

- Hubbell and BIM Object partner to provide BIM models for a wide variety of Hubbell products on BIM Objects industry leading BIM warehouse site.



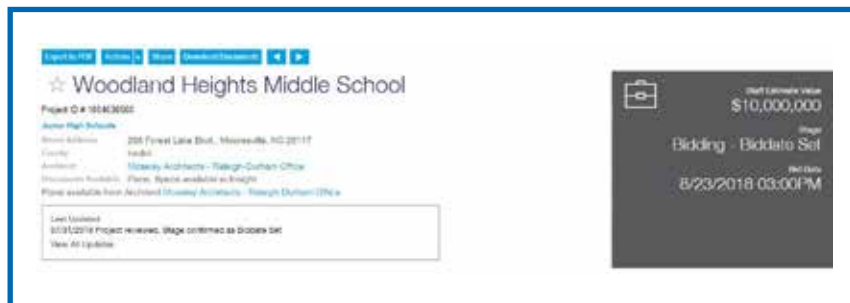
MasterSpec

- Hubbell partners with MasterSpec to provide CSI MasterFormat specifications on MasterSpec's industry leading site.



ConstructConnect

- Hubbell's field sales organization utilizes the ConstructConnect project search tool to track projects across the United States. From pre-planning to post bid, ConstructConnect provides Hubbell's sales team access to current specifications and plans for many public and private construction projects.



ConstructConnect Example Project

Installation Efficient Product Solutions



New Construction



Renovation



Tenant Build Out



Design/Build



Service Work



SNAPConnect® Devices



Hubbell SystemOne Floor Boxes and FRPTs



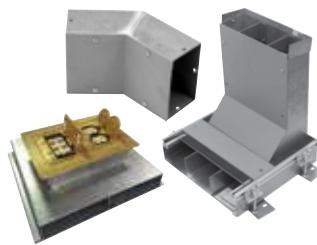
Pre-wired and Configurable Devices



Prefabricated Solutions



Pre-Wired Raceway



Wall/Trench and Underfloor Duct



Wire Basket Tray



Adaptive Technology and Wireless Load Control

Hubbell Product Literature



10 Inch Fire-Rated Poke-Throughs



Wire Basket Tray



Fully Adjustable 4 Inch Round Recessed Floor Boxes

HUBBELL®
Wiring Device-Kellems

www.hubbell.com/wiringdevice-kellems/en

