



AF and AFGF dual function circuit breakers

Square D Homeline™ Combination Arc Fault and Dual Function Circuit Breakers

The next generation of Homeline breakers

The fastest just got faster

Designed specifically with electrical contractors in mind, Square D has upgraded its market-leading Homeline breakers. Our exciting new features make installation and maintenance both easier and faster.

Engineered directly in response to customer feedback, these new Arc Fault (AF) and Arc Fault Ground Fault (AF/GF) dual function circuit breakers are designed with today's contractors' needs in mind.

What's new?

- Shorter footprint for easier installs
- Backed-out terminal screws for faster wiring
- Side-by-side lug access and neutral lug alignment for faster installs
- Time Saving Diagnostics LED for simplified troubleshooting
- Finger-safe terminals for safer install
- Advance Arc-D-Tect™ arc-fault detection to reduce tripping



New Dual Function (AFGF) Homeline circuit breakers

New Combination Arc Fault (AF) Homeline circuit breakers

se.com/us/simplysmarter

Life Is On

Schneider
Electric

We listened and made the best even better.

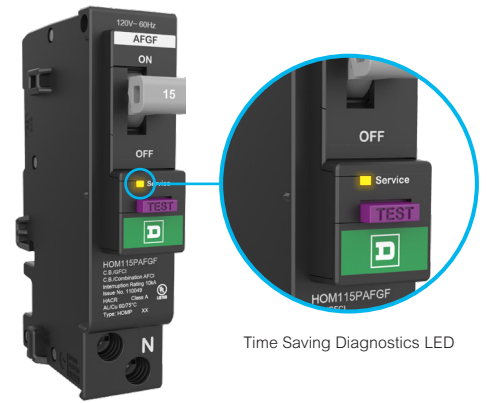
We knew we had great products with our Homeline Dual Function (DF) and Combination Arc-Fault Circuit Interrupters (CAFI) which, when used with Qwik-Grip, could help electrical contractors save 44 minutes in installation time per load center.

But we wanted to do better. That's why we took the time to listen to our customers and respond with an improved Homeline breaker that makes your job easier.

Homeline DF legacy vs New Homeline AF/GF



Yes	Plug-on Neutral	Yes
No	Side-by-Side Load & Neutral lugs	Yes
No	IP2X Finger-Safe Lugs	Yes
Only TSD	Time Saving Diagnostics LED	Yes
No	Shorter Footprint	More gutter space
No	Backed out screws	Yes



Time Saving Diagnostics LED

How the Time Saving Diagnostics LED works

On power up, the LED will indicate the cause of the previous trip condition.

LED lights on solid for 10 seconds then turns OFF Arc fault

LED pulses 2 times Ground fault

LED pulses 4 times Grounded neutral

LED pulses 7 times Arc fault protection unresponsive

LED does not turn ON Thermal overload
Short circuit

Should a trip code be stored, quickly press and release the TEST button to re-initiate the LED blink pattern without tripping the circuit breaker.

Call 888-SQUARED (888-778-2733) for dedicated support and assistance in further troubleshooting.

New Homeline breakers

Faster

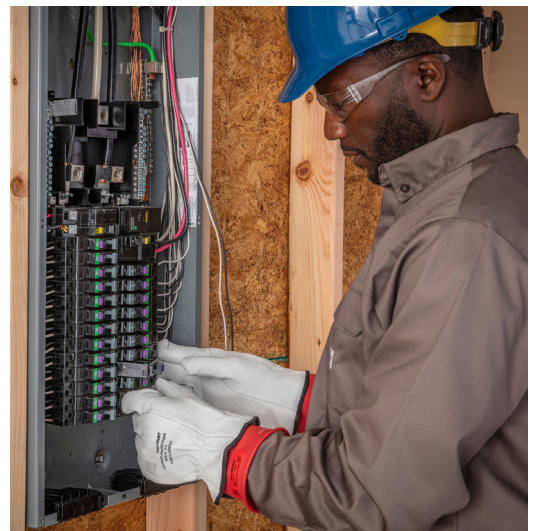
- Backed-out terminal screws speed up wiring
- Side-by-side lug arrangement allows for faster installation
- Plug-on neutral connection eliminates the number of connections required

Easier

- LED simplifies troubleshooting by enabling remote diagnostics
- Clear markings on breaker make lug identification easier
- IP2X lug terminals enhance safety by lowering energized part contact risk
- Contrasting handle colors help identify trips
- Optimized footprint provides 15% more gutter space to simplify wiring

Smarter

- Time-Saving Diagnostics LED provides backup means for fault type identification
- Advance Arc-D-Tect platform mitigates unplanned tripping
- Proven history of dependability and performance



New Homeline catalog numbers

Legacy Catalog Number	New Catalog Number	# of Poles	A	kA RMS
HOM115PDF	HOM115PAFGF	1	15	10
HOM120PDF	HOM120PAFGF		20	
HOM115PCAFI	HOM115PAF		15	
HOM120PCAFI	HOM120PAF		20	



New Dual Function (AFGF) Homeline circuit breakers

New Combination Arc Fault (AF) Homeline circuit breakers

se.com/us/simplysmarter

Life Is On

Schneider
Electric

Schneider Electric USA, Inc.
6700 Tower Circle, Suite 700,
Franklin TN, 37067
888 SQUARED (888-778-2733)