

# Fiber Cable Assemblies

## Indoor Fiber Jumper Cables

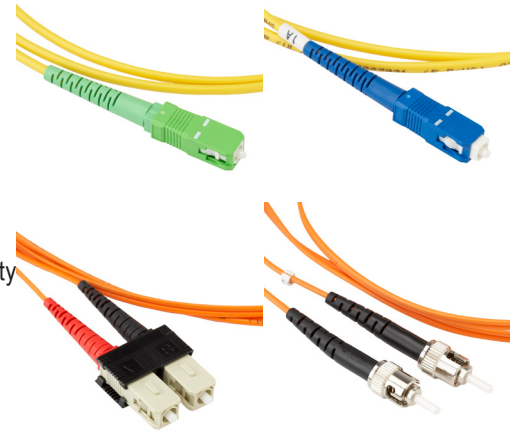


### Application

A fiber jumper, sometimes called a fiber patch cord, is a length of fiber cabling fitted with connectors at each end. They are used to connect end devices or network hardware.

### Description

Clearfield® offers singlemode and multimode, simplex and duplex Indoor Fiber Jumper Cables manufactured to tight internal specifications that exceed industry-accepted standards. Fiber assemblies are used in a variety of carrier networks and private network environments. The key to manufacturing high-performance fiber assemblies is controlling polish radius, apex offset and fiber undercut. Clearfield monitors its automated polishing process to exceed industry specifications for insertion and return loss, ensuring a top-quality product.



### Features and Benefits

#### Integrity

- Terminations are designed and tested to Telcordia GR-326
- Clearfield® FiberDeep® Guarantee: 0.2 dB insertion loss or less, exceeding industry standards
- Supports industry standard singlemode and multimode connectors
- Singlemode and multimode and hybrid cables available

#### Protection

- Each fiber is individually covered with an outer jacket for added protection
- Wide variety of jacket sizes for all applications, 3 mm, 2 mm, 1.6 mm, 1.2 mm, 900 µm
- Riser and Plenum rated jacket options available
- Available in simplex, dual-round and dual zip-cord configurations

#### Access

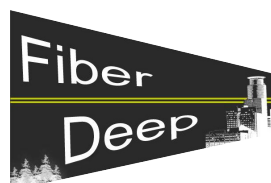
- Compact jacket design minimizes cable pile up
- Industry standard terminations include SC and LC (ask a Clearfield representative for other connector availability)

#### Investment

- Indoor Jumper Assemblies offer an economical solution for deploying fiber in any optical network
- Environmentally stable, low-insertion loss, minimal back reflection
- All assemblies are 100% tested

### Technical Specifications

Indoor Fiber Jumper Cables	
Core Size and Type	Singlemode and multimode
Fiber Count	Simplex (1-fiber) and duplex (2-fiber)
Jacket O.D.	900 µm, 1.6 mm, 2.0 mm, 3.0 mm
Cable Types	Indoor Riser, Indoor Plenum
Connector Types	SC/UPC, SC/APC, LC/UPC, LC/APC
Operating Temperature	-40°C to 85°C (-40°F to 185°F)



# Fiber Cable Assemblies

## Indoor Fiber Jumper Cables



### Minimum Performance Specifications for Terminated Singlemode Connectors

Connector Type	Ferrule Material	Polish Type	Ins. Loss, Typical	Max. Ins. Loss	Min. Ret. Loss
SC	Ceramic	UPC	0.15 dB	0.20 dB	55.00 dB
LC	Ceramic	UPC	0.15 dB	0.20 dB	55.00 dB
SC	Ceramic	APC	0.15 dB	0.20 dB	65.00 dB
LC	Ceramic	APC	0.15 dB	0.20 dB	65.00 dB

### Minimum Performance Specifications for Terminated Multimode Connectors

Connector Type	Ferrule Material	Polish Type	Ins. Loss, Typical	Max. Ins. Loss
SC	Ceramic	PC	0.25 dB	≤ 0.50 dB
LC	Ceramic	PC	0.25 dB	≤ 0.50 dB

## Configured Part Numbers

*Disclaimer/Note: Paper configurator shown is for reference only and should not be used to configure a saleable product configuration. All options shown on paper configurators may not be available or compatible with other options listed. Please contact your Clearfield representative for assistance in product configurations.*

P \_\_\_\_\_ - \_\_\_\_\_ - \_\_\_\_\_ - \_\_\_\_\_ - \_\_\_\_\_ XXXM or XXXF

<b>1</b>	<b>2</b>	<b>3</b>	<b>4</b>	<b>5</b>	<b>6</b>	<b>7</b>	<b>8</b>	<b>9</b>
----------	----------	----------	----------	----------	----------	----------	----------	----------

**1 Select Cable Construction**

A = Indoor, riser rated  
 C = Indoor, plenum  
 F = 900 μm tight buffer

**4 Select Connector # 2**

A = SC/UPC      E = LC/UPC  
 B = SC/UPC DX      F = LC/UPC DX  
 C = SC/APC      G = LC/APC  
 D = SC/APC DX      H = LC/APC DX

**7 Select Connector # 1**

A = SC/UPC      F = LC/UPC DX  
 B = SC/UPC DX      H = LC/APC DX  
 C = SC/APC      G = LC/APC  
 D = SC/APC DX      Z = Pigtail  
 E = LC/UPC

**2 Select Mode / Type**

1 = Singlemode  
 3 = Multimode (62.5)  
 5 = Multimode (50) – non-ribbon  
 7 = Multimode (50) laser opt– non-ribbon OM  
 9 = Multimode (50) OM4

**5 Select Boot**

Y = Short  
 Z = Standard

**8 Select Boot**

Y = Short  
 Z = Standard

**3 Select Fiber Count**

001 = Simplex  
 002 = Duplex

**6 Select Jacket Size**

A = 900 μm      D = 3 mm  
 B = 2 mm      E = 1.6 mm

**9 Select Jacket Size**

A = 900 μm      D = 3 mm  
 B = 2 mm      E = 1.6 mm  
(must match the # 6 option)

**XXXM or XXXF**

XXXM = Length in meters  
 XXXF = Length in feet

