

LIFTING EYES



APPLICATION

Lifting Eyes are used for lifting PROLINE G2 modular frames and for fastening PROLINE G2 top accessories to the frame.

FEATURES

- Designed for overhead lifting in conjunction with shackles and a spreader bar
- Thread into corner blocks in a frame

SPECIFICATIONS

- Furnished in sets of four
- Use of shackles instead of hooks is preferred
- The angle between the top of the enclosure and the cable or chain must be at least 45 degrees
- Use only slings and spreader bars that are designed for the specific application and are in compliance with regulations established by OSHA, ASME, ISA, ASTM and other governing agencies

FINISH

- Plated

LOAD RATING

- 750 lb (340 kg) per lifting eye, straight vertical pull
- 500 lb (226 kg) per lifting eye. 45 degree pull

BULLETIN: P40

Catalog Number	Description
P2ALE	Lifting Eyes, Qty 4

LIFTING ANGLES



APPLICATION

Lifting angles fasten into the steel corner blocks of a modular enclosure or joined modular enclosures to facilitate overhead lifting.

FEATURES

- Set of two angles, mounting hardware included
- Used to provide best load distribution while lifting two or three joined/ganged enclosures with up to 1000 lb (453 kg) of equipment and cabling in each bay
- Angles mount to top of enclosure frame corner blocks and do not require removal of top cover for installation

SPECIFICATIONS

- Lifting Angles are designed for overhead lifting in conjunction with shackles and a spreader bar
- Use of shackles instead of hooks is preferred
- The angle between the top of the enclosure and the cable or chain must be at least 45 degrees
- 10 gauge (3.0mm), mild steel
- Use only slings and spreader bars that are designed for the specific application and are in compliance with regulations established by OSHA, ASME, ISA, ASTM and other governing agencies

FINISH

- Plated

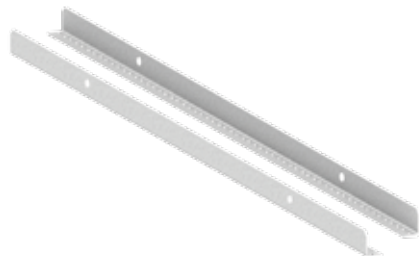
LOAD RATING

- 1500 lb (680 kg) per angle
- 3000 lb (1360 kg) set of 2

BULLETIN: P40

Catalog Number	Description
P2ALAFB	Front-to-Back Lifting Angles
P2ALASS	Side-to-Side Lifting Angles

LIFTING BARS



APPLICATION

Lifting Bars provide the best load distribution while lifting joined enclosures, each containing up to 3000 lbs. per bay of equipment and cabling. Bars mount to top of enclosure frame corner blocks and do not require removal of top cover for installation. Kit consists of two bars, bolts and washers.

FEATURES

- Set of two bars
- Can be used to lift joined enclosures up to 6 bays
- Load rating: 3000 lbs. (1360 kg) per bay

SPECIFICATIONS

- Mounts to top of frame corner blocks
- Does not require removal of top
- Consists of two bars, bolts and washers
- Designed for overhead lifting in conjunction with shackles and spreader bars. Use of shackles instead of hooks is preferred
- Use only spreader bars that are in compliance with regulations established by OSHA, ASME, ISA, ASTM or other governing agencies
- Angle between top of enclosure and the cable or chain greater than or equal to 45 degrees

FINISH

Clear zinc coated steel

LOAD RATING

- Load rating: 3000 lb (1360 kg) per bay
- Can be used to lift joined enclosures up to 6 bays

BULLETIN: P40

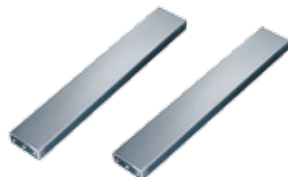
Catalog Number	Description
P2ALB12	LIFTING BARS 1200mm SET OF 2
P2ALB14	LIFTING BARS 1400mm SET OF 2
P2ALB16	LIFTING BARS 1600mm SET OF 2
P2ALB18	LIFTING BARS 1800mm SET OF 2
P2ALB20	LIFTING BARS 2000mm SET OF 2
P2ALB22	LIFTING BARS 2200mm SET OF 2
P2ALB24	LIFTING BARS 2400mm SET OF 2
P2ALB26	LIFTING BARS 2600mm SET OF 2
P2ALB28	LIFTING BARS 2800mm SET OF 2
P2ALB30	LIFTING BARS 3000mm SET OF 2

FRAME LIFTING ACCESSORIES LOAD CHART

Item	Load Rating* (lb/kg)	Recommended no. of Enclosures
Lifting Eyes	2000/907 (set of 4) 500/226 (per eye)	1-2
Lifting Angles	3000/1360	2-3
Lifting Bar	3000/1360	3-6

* Specified at a 45 degree lift angle

SUPPORT BRACKET KIT



APPLICATION

Support Brackets cross the depth of a modular enclosure and can be used for additional support for heavy devices mounted on the sides or tops.

FEATURES

- Brackets provide additional support for large air conditioners or other heavy devices that can be mounted on PROLINE G2 sides or tops
- Can be positioned at various heights to accommodate any size air conditioner or device

SPECIFICATIONS

- Support brackets fit on the sides, top or base (along the depth) to provide two horizontal rigid supports
- 14 gauge (1.75 mm) steel
- Furnished in pairs
- Installation hardware included

FINISH

Plated

BULLETIN: P40

Catalog Number	Length mm/in.	Fits Frame Depth mm
P2ACB4	256 10.0	400
P2ACB5	356 14.0	500
P2ACB6	456 18.0	600
P2ACB8	656 25.8	800
P2ACB10	856 33.7	1000

DRIP SHIELD



APPLICATION

The PROLINE G2 Drip Shield is used on the inside of the door to provide additional protection from liquid and contaminants. The frame of the PROLINE G2 includes a flange trough collar to protect the interior from dust and debris settling on the top of the enclosure. The Drip Shield effectively increases the depth of the trough, and provides additional protection for Type 3R applications.

DUST COVER



APPLICATION

The PROLINE G2 Dust Cover can be used across the top of joined enclosures to provide a finished appearance. The Dust Cover is not required to maintain a Type 12 rating. It is purely for enhanced aesthetics.

WALL BRACKETS



SPECIFICATIONS

- Provides additional protection from liquid contaminants and debris
- Mounted inside the door cover; directly on the top through the M12 mounting holes.
- Can be mounted on either the front or rear of the enclosure (running left-to-right only).
- All mounting hardware included
- 16 gauge mild steel

FINISH

- Polyester powder paint
- RAL 7035 textured light gray standard
- Custom colors available

BULLETIN: P40

Catalog Number	Length (mm)	Length (in.)
P2ADS4	379	14.9
P2ADS6	579	22.8
P2ADS8	779	30.7
P2ADS10	979	38.5
P2ADS12	1179	46.4
P2ADS16	1579	62.2
P2ADS18	1779	70.0

SPECIFICATIONS

- Provides a finished appearance across the top of the joined enclosures
- Not required to maintain Type 12 rating
- 16 gauge mild steel

FINISH

- Polyester powder paint
- RAL 7035 textured light gray standard
- Custom colors available

BULLETIN: P40

Catalog Number	Length (mm)	Length (in.)
P2ADC4	364	14.3
P2ADC5	464	18.3
P2ADC6	564	22.2
P2ADC8	764	30.1
P2ADC10	964	38.0

The PROLINE G2 Anti-Tip Bracket Kit secures the top of an enclosure to a fixed surface such as a wall, and protects against enclosure tipping. The brackets are made from 10 gauge mild steel, and are Polyester powder-painted RAL 7035 textured light gray. The kit comes with a single pair of brackets and mounting hardware to affix brackets to the enclosure.

The PROLINE G2 Wall Bracket Kit secures both the top and bottom of an enclosure to a fixed surface such as a wall. The same brackets are used in both the Anti-Tip and Wall Bracket kits. The Wall Bracket kit comes with two pairs of brackets and mounting hardware to affix brackets to the enclosure. The bracket kit is rated to 800 lbs. (363 kg).

Note: mounting hardware for securing brackets to the wall is not sold by Hoffman, and is the responsibility of the customer.

BULLETIN: P40

Catalog Number	Description
P2AATB	Anti-Tip Bracket Kit
P2AWB	Wall Bracket Kit

Notes