

# BRONZE TERMINAL, CABLE TO FLAT PAD

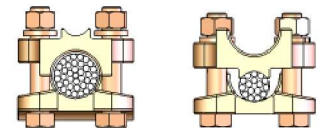
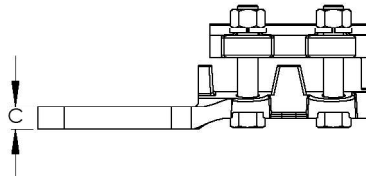
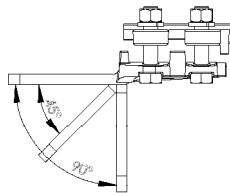
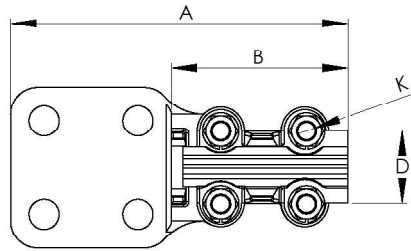
SECTION

11-1

Cast of copper alloy for high conductivity and natural resistance to corrosion and stress, the type TU-terminals includes bolts, nuts, and lock washers made of silicon bronze for clamping strength and durability.

Bolt heads are captivated to facilitate single-wrench installation.

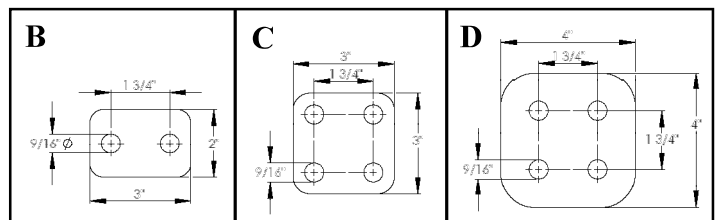
Side-formed NEMA pads are standard.



Wide Range denoted by: \*

Special tongue features will be supplied, provided the catalog number is followed by the proper suffix.

**Example:** A 45 degree tongue for number 11-101, should appear as 11-101-45.



CATALOG NUMBER	STYLE PAD	CABLE AWG MIN.	SIZE MCM MAX	DIMENSIONS IN INCHES				
				A	B	C	D	K
11-101*	B	8	250	5 11/16	2 3/4	3/8	1/2	3/8
11-104*	B	8	600	6 1/4	3 1/8	3/8	3/4	3/8
11-105*	C	8	600	6 1/8	3 1/8	3/8	3/4	3/8
11-106*	D	8	600	7 1/8	3 1/8	3/8	3/4	3/8
11-110*	B	4/0	1000	7 1/8	3 3/4	5/8	7/8	1/2
11-111*	C	4/0	1000	7	3 3/4	5/8	1	1/2
11-112*	D	4/0	1000	8	3 3/4	5/8	1	1/2
11-113	B	1000	1500	7 1/2	4 1/4	1/2	1 1/4	1/2
11-114	C	1000	1500	7 1/2	4 1/4	1/2	1 1/4	1/2
11-115	D	1000	1500	8 3/4	4 1/4	3/4	1 1/4	1/2
11-116	B	1500	2000	8 3/4	5 1/8	3/4	1 5/8	1/2
11-117	C	1500	2000	8 3/4	5 1/8	1	1 5/8	1/2
11-118	D	1500	2000	9 3/4	5 1/8	1	1 5/8	1/2