

Caretaker
LED area luminaire

Lumark



EATON

Powering Business Worldwide

Security made easy by design.

Superior illumination.
Low maintenance. Built to last.

The Caretaker™ LED area luminaire combines high performance, low maintenance and easy installation in a simple, extremely economic package that has been designed for years of worry-free operation. The Caretaker luminaire is ideal for pole or wall mounted security lighting, residential street lighting, perimeter area lighting, parking areas, loading platforms, boat docks, access drives or pathways.

Features and benefits

- Single heavy-duty die-cast housing for durability and low maintenance in security lighting applications
- Universal wall and wood pole mount bracket for ease of installation and numerous applications
- Integral slipfitter for mounting to pipe arm for versatility in mounting configuration
- High performance LED delivers up to 9,700 lumens and replaces up to 250W HID equivalents
- Precision molded optic designed to shape the distribution allowing maximum efficiency and application coverage
- Integrated light shield for full cutoff compliance to eliminate light pollution
- 3-PIN NEMA twist-lock photocontrol (included) provides automatic dusk-to-dawn operation for maximum energy savings
- 6kV integral surge protection device protects drivers and LED components

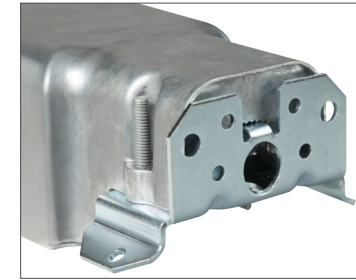


Energy and maintenance savings up to **89%** compared to HID

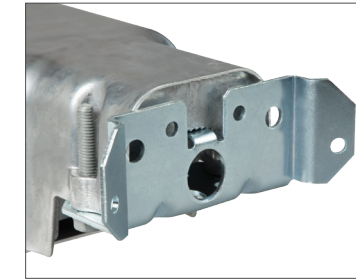
High-performance efficacy up to **155** lumens per watt



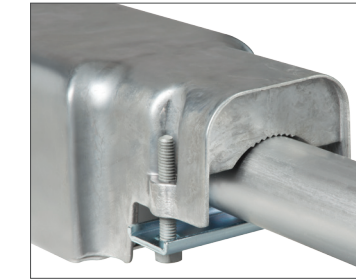
Design features



Wall / square pole mount



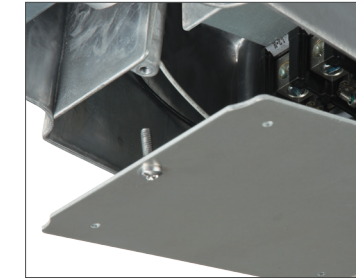
Wood pole mount



Pipe arm mount



Zero uplight shield

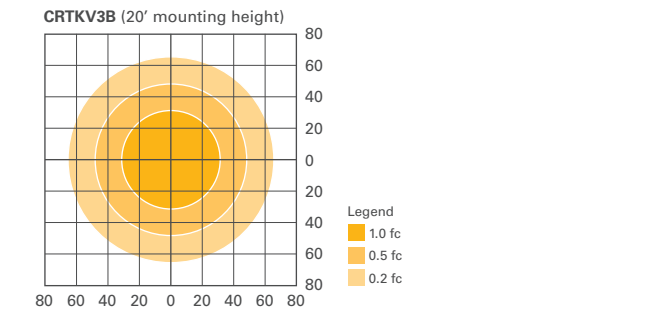
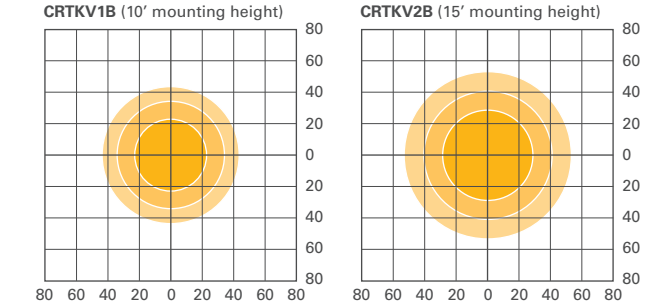


Single-point access



3-PIN NEMA receptacle

Photometrics



Technical specifications

STOCK SKUs
CTKRV1B
CTKRV2B
CTKRV3B

PERFORMANCE
Distributions: Type V symmetric round
Color temperature: 4000K / 70 CRI
Lumens: 4,515 / 7,110 / 9,741
Wattage: 29W / 50W / 71W
Efficacy: Up to 155 lm/W

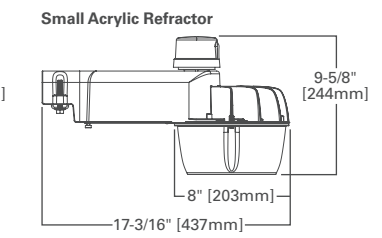
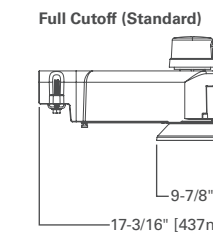
ENERGY DATA
Minimum temperature: -40°C
Ambient temperature rating: 40°C
Operation: 120-277V 50/60Hz
Controls: 0-10V dimmable

WEIGHT
7 lbs. (3.2 kgs.)

ADDITIONAL INFORMATION
Warranty: 5 year
Vibration rated: 3G
UL/cUL listed: Wet location
IP rated: Yes (Optic)
ISO 9001: Certified
LM79/LM80: Compliant
RoHS: Compliant

ENERGY / MAINTENANCE SAVINGS
Annual savings: Up to 89% (compared to HID)

Dimensions



Product specifications subject to change without notice. Visit eaton.com/lighting to find the most up to date information.



Lighting Product Lines

Ametrix
AtLite
Corelite
Ephesus
Fail-Safe
Halo
Halo Commercial
Invue
io
Iris
Lumark
Lumière
McGraw-Edison
Metalux
MWS
Neo-Ray
Portfolio
RSA
Shaper
Streetworks
Sure-Lites

Controls Product Lines

Fifth Light Technology
Greengate
iLight (International Only)
iLumin
Zero 88

Connected Lighting Systems

Distributed Low-Voltage Power
Halo Home
iLumin Plus
LumaWatt Pro
WaveLinx



Eaton
1121 Highway 74 South
Peachtree City, GA 30269
P: 770-486-4800
www.eaton.com/lighting

Canada Sales
5925 McLaughlin Road
Mississauga, Ontario L5R 1B8
P: 905-501-3000
F: 905-501-3172

© 2018 Eaton
All Rights Reserved
Printed in USA
Publication No. BR500012EN
December 2018

Eaton is a registered trademark.

All other trademarks are property of their respective owners.

Product availability, specifications, and compliances are subject to change without notice.