

FEATURES & SPECIFICATIONS

INTENDED USE — Square Straight Aluminum is a general purpose light pole for up to 35-foot mounting heights. This pole provides a lighter and naturally corrosion-resistant option for mounting area light fixtures and floodlights.

CONSTRUCTION — **Pole Shaft:** The pole shaft is of uniform wall thickness and is made of extruded 6000 series aluminum alloy tubing that is heat treated to a T6 temper to provide maximum strength. The shaft is uniformly square in cross-section with flat sides, small corner radii and excellent torsional qualities. Available shaft widths are 4", 5", 6" and 6.75".

Pole Top: Options include tenon top, drilled for side mount fixture, tenon with drilling (includes extra hand-hole) and open top. A cast aluminum top cap is provided for all poles that will receive drilling patterns for side-mount luminaire arm assemblies or when ordered with open top (PT) option. The top cap resists intrusion of moisture and environmental contaminants.

Handhole: A handhole opening with grounding provision is provided near the base. Standard positioning varies with shaft width as follows: 4" shaft, handhole at 12"; 5" shaft, handhole at 14"; 6" and 6.75" shaft, handhole at 18". Positioning the handhole lower than standard may not be possible and requires engineering review; consult Tech Support-Outdoor for further information. Every handhole includes a cover and cover attachment hardware. The handhole for a pole specified with a 4" or 5" shaft width has a nominal dimension of 2" x 4"; the handhole for a pole specified with a 6" or 6.75" width has a nominal dimension of 2.63" x 5".

Anchor Base/ Cover/ Bolts: Anchor base is cast from 356 alloy aluminum and is supplied with 4 nut cover disks. A full 2-piece cast aluminum anchor base cover is available as an option.

Anchor bolts are manufactured to ASTM F1554 Standards Grade 55, (55 KSI minimum yield strength and tensile strength of 75-95 KSI). Upper portion of anchor bolt is galvanized per ASTM A-153; bolts have an "L" bend on bottom end and are galvanized a minimum of 12" on the threaded end.

FINISH — Painted finish is coated with TGIC (Triglycidyl Isocyanurate) Polyester powder that meets 5A and 5B classifications of ASTM D3359. Standard powder-coat finishes include Dark Bronze, White, Black, Medium Bronze and Natural Aluminum colors. Classic finishes include Sandstone, Charcoal Gray, Tennis Green, Bright Red and Steel Blue colors. Other finishes include Brushed Aluminum, and Anodized Dark Bronze, Anodized Natural Aluminum and Anodized Black. Architectural Colors and Special Finishes are available by quote and include, but are not limited to RAL Colors, Custom Colors and Extended Warranty Finishes. Factory-applied primer paint finish is available for customer field-paint applications.

Catalog Number
Notes
Type



Anchor Base Poles

SSA

SQUARE STRAIGHT ALUMINUM

WARRANTY — 1-year limited warranty. Complete warranty terms located at: www.acuitybrands.com/CustomerResources/Terms_and_conditions.aspx

NOTE: Actual performance may differ as a result of end-user environment and application. Specifications subject to change without notice.

ORDERING INFORMATION

Lead times will vary depending on options selected. Consult with your sales representative.

Example: SSA 20 4C DM19 BA

SSA Series	Nominal fixture mounting height	Nominal shaft base size/wall thickness	Mounting ²	Options	Finish ¹⁰
SSA	(See technical information table for complete ordering information.) 8'-35' (for 1/2 ft increments, add -6 to the pole height. Ex: 20-6 equals 20ft 6in.)	(See technical information table for complete ordering information.) 4C 4" (.125") 5C 5" (.125") 5E 5" (.156") 5G 5" (.188") 6E 6" (.156") 6G 6" (.188") 7E 7" (.156") 8E 8" (.156") 8G 8" (.188") 8J 8" (.250") 9E 9" (.156") 9G 9" (.188") 10G 10" (.188") 10J 10" (.250")	Tenon mounting PT Open top T20 2-3/8" O.D. (2" NPS) T25 2-7/8" O.D. (2-1/2" NPS) T30 3-1/2" O.D. (3" NPS) ³ T35 4" O.D. (3-1/2" NPS) ³	Shipped installed L/AB Less anchor bolts (Include when anchor bolts are not needed) VD Vibration damper TP Tamper proof HAxy Horizontal arm bracket (1 fixture) ^{6,7} FDLxy Festoon outlet less electrical ⁶ CPL12/xy 1/2" coupling ⁶ CPL34/xy 3/4" coupling ⁶ CPL1/xy 1" coupling ⁶ NPL12/xy 1/2" threaded nipple ⁶ NPL34/xy 3/4" threaded nipple ⁶ NPL1/xy 1" threaded nipple ⁶ EHHxy Extra handhole ^{6,8} MAEX Match existing ⁹ USPOM United States point of manufacture ¹⁰ UL UL listed wit label (Includes NEC compliant cover) NEC NEC 410.30 compliant gasketed handhole (Not UL Labeled)	Standard colors DDB Dark bronze DWH White DBL Black DMB Medium bronze DNA Natural aluminum Brushed Finish BA Brushed aluminum Classic colors DSS Sandstone DGC Charcoal gray DTG Tennis green DBR Bright red DSB Steel blue Class 1 architectural anodized ABL Black ADB Dark bronze ANA Natural Architectural colors (powder finish) ¹¹
			Drill mounting ⁴ DM19 1 at 90° DM28 2 at 180° DM28PL 2 at 180° with one side plugged DM29 2 at 90° DM39 3 at 90° DM49 4 at 90° CSX/DSX/AERIS™/OMERO™/HLA/KAX Drill mounting ⁴ DM19AS 1 at 90° DM28AS 2 at 180° DM29AS 2 at 90° DM39AS 3 at 90° DM49AS 4 at 90° AERIS™ Suspend drill mounting ^{4,5} DMxxAST_ OMEMO™ Suspend drill mounting ^{4,5} DMxxMRT_	Shipped separately (replacement kit available) (blank) BLTC Bolt caps FBC Full base cover (spun aluminum) (blank) TC Top cap (with drill-mount poles) (blank) HHC Handhole cover	

See footnotes next page.

SSA Square Straight Aluminum Poles

NOTES

- Wall thickness will be signified by the letter "C", "G" or "J". C represents a 0.125" thickness, "G" represents a 0.188 thickness and "J" represents a 0.250" thickness.
- When ordering tenon mounting and drill mounting for the same pole, follow this example: DM28/T20. The combination includes a required extra handhole.
- 3-1/2" and 4" O.D. tenons available on 5" and 6" shafts only.
- Refer to the fixture spec sheet for the correct drilling template pattern and orientation compatibility. Refer to the Anchor Bolt Matrix with Generic Template Link at <http://www.acuitybrands.com/-/media/Files/Acuity/Resources/Tools-and-Documents/Pole%20Resources/Pole%20Anchorage/Matrix%20Document/AnchorBoltMatrix.pdf?la=en>
- Insert "1" or "2" to designate fixture size; e.g. DM19AST2.
- Specify location and orientation when ordering option. For "x": Specify the height in feet above base of pole. Example: 5ft = 5 and 20ft, 3in = 20-3 For "y": Specify orientation from handhole (A,B,C,D) Refer to the Handhole Orientation diagram on this page. Example: 1/2" coupling at 5'8", orientation C: SSA 20 4C DM19 CPL12/5-8C DDB
- Horizontal arm is 18" x 2-3/8" O.D. tenon standard, with radius curve providing 12" rise and 2-3/8" O.D.
- Combination of tenon-top and drill mount includes extra handhole.
- Must add original order number
- Use when mill certifications are required.
- Finish must be specified. Additional colors available; see www.lithonia.com/archcolors or Architectural Colors brochure (Form No. 794.3).

TECHNICAL INFORMATION – EPA (ft2) WITH 3-SECOND GUST PER AASHTO 2013

Series	Mounting Height (ft)*	Shaft Size	90 MPH	Max. weight (lbs)	100 MPH	Max. weight (lbs)	110 MPH	Max. weight (lbs)	120 MPH	Max. weight (lbs)	130 MPH	Max. weight (lbs)	140 MPH	Max. weight (lbs)	150 MPH	Max. weight (lbs)
SSA	8	4C	9.4	350	7.2	350	5.5	350	4.3	350	3.3	350	2.6	350	2	350
SSA	10	4C	7	260	5.1	260	3.7	260	2.7	260	1.8	260	1.2	260	0.6	260
SSA	12	4C	4.8	260	3.2	260	2	260	1.1	260	-	260	-	-	-	-
SSA	14	4C	3.1	200	1.7	200	0.7	200	-	-	-	-	-	-	-	-
SSA	15	4C	2.3	200	1	200	-	-	-	-	-	-	-	-	-	-
SSA	16	4C	1.5	200	-	-	-	200	-	-	-	-	-	-	-	-
SSA	16	4G	9.1	200	6.5	200	4.5	200	3	200	1.8	200	0.9	200	-	-
SSA	18	4C	-	100	-	-	-	-	-	-	-	-	-	-	-	-
SSA	18	4G	6.9	150	4.6	150	2.8	150	1.5	150	-	150	-	-	-	-
SSA	18	5G	7.6	260	4.8	260	2.7	260	1.2	260	-	-	-	-	-	-
SSA	20	4C	-	-	-	-	-	-	-	-	-	-	-	-	-	-
SSA	20	4G	4.9	150	2.8	150	1.2	150	-	-	-	-	-	-	-	-
SSA	20	5G	5.4	150	2.9	150	1.1	150	-	-	-	-	-	-	-	-
SSA	20	6G	8.5	150	4.9	150	2.2	150	-	-	-	-	-	-	-	-
SSA	25	5G	0.6	100	-	-	-	-	-	-	-	-	-	-	-	-
SSA	25	6G	1.2	260	-	-	-	-	-	-	-	-	-	-	-	-
SSA	25	6J	6.6	260	2.8	260	-	-	-	-	-	-	-	-	-	-
SSA	30	6G	-	-	-	-	-	-	-	-	-	-	-	-	-	-
SSA	30	6J	-	-	-	-	-	-	-	-	-	-	-	-	-	-
SSA	32	6J	-	-	-	-	-	-	-	-	-	-	-	-	-	-
SSA	35	6J	-	-	-	-	-	-	-	-	-	-	-	-	-	-
SSA	35	7J	-	-	-	-	-	-	-	-	-	-	-	-	-	-

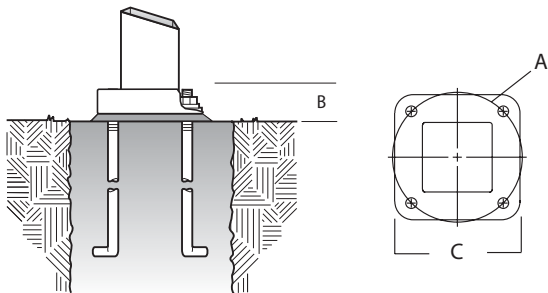
AASHTO 2013 criteria is the most conservative existing EPA calculation. For poles not showing EPA values under AASHTO 2013, EPA values may exist under commercial criteria (see table below).

*For 1/2 ft increments, add -6 to the pole height. Ex: 20-6 equals 20ft 6in.

SSA Square Straight Aluminum Poles

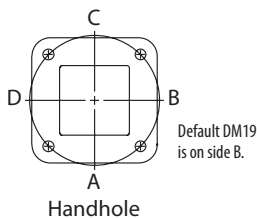
TECHNICAL INFORMATION										
Catalog number	Nominal mount ht. (ft) *	Pole shaft size (in x ft)	Wall thick (in)	EPA (ft ²) with 1.3 gust			Max.	Bolt circle (in)	Bolt size (in. x in. x in.)	Approximate ship (lbs.)
				80 mph	90 mph	100 mph				
SSA 8 4C	8	4.0 x 8.0	0.125	16.5	12.6	9.9	300	8.5-9.625	3/4 x 18 x 3	32
SSA 10 4C	10	4.0 x 10.0	0.125	11.5	8.6	6.5	230	8.5-9.625	3/4 x 18 x 3	37
SSA 12 4C	12	4.0 x 12.0	0.125	12.4	9.2	6.9	160	8.5-9.625	3/4 x 18 x 3	40
SSA 14 4C	14	4.0 x 14.0	0.125	9.3	6.7	4.8	120	8.5-9.625	3/4 x 18 x 3	50
SSA 15 4C	15	4.0 x 15.0	0.125	8	5.6	3.9	100	8.5-9.625	3/4 x 18 x 3	52
SSA 16 4C	16	4.0 x 16.0	0.125	6.9	4.7	3.1	90	8.5-9.625	3/4 x 18 x 3	54
SSA 16 4G	16	4.0 x 16.0	0.188	11.8	8.5	6.2	130	8.5-9.625	3/4 x 30 x 3	74
SSA 16 5G	16	5.0 x 16.0	0.188	15	11.1	7.5	280	10.5-11.5	3/4 x 30 x 3	83
SSA 18 4C	18	4.0 x 18.0	0.125	4.9	3	1.7	70	8.5-9.625	3/4 x 18 x 3	57
SSA 18 4G	18	4.0 x 18.0	0.188	9.2	6.4	4.4	100	8.5-9.625	3/4 x 30 x 3	80
SSA 18 5G	18	5.0 x 18.0	0.188	16.8	12.2	8.9	230	10.5-11.5	3/4 x 30 x 3	91
SSA 20 4C	20	4.0 x 20.0	0.125	3.3	1.7	0.5	40	8.5-9.625	3/4 x 18 x 3	62
SSA 20 4G	20	4.0 x 20.0	0.188	7	4.6	2.9	80	8.5-9.625	3/4 x 30 x 3	85
SSA 20 5G	20	5.0 x 20.0	0.188	13.6	9.5	6.6	180	10.5-11.5	3/4 x 30 x 3	107
SSA 20 6G	20	6.0 x 20.0	0.188	22	15.9	11.6	230	12-13	1 x 36 x 4	155
SSA 20 6J	20	6.0 x 20.0	0.25	30.4	22.6	17	300	12-13	1 x 36 x 4	202
SSA 25 5G	25	5.0 x 25.0	0.188	7.2	4.2	2	110	10.5-11.5	3/4 x 30 x 3	130
SSA 25 6G	25	6.0 x 25.0	0.188	13.2	8.6	5.4	180	12-13	1 x 36 x 4	180
SSA 25 6J	25	6.0 x 25.0	0.25	19.7	13.8	9.5	250	12-13	1 x 36 x 4	224
SSA 30 6G	30	6.0 x 30.0	0.188	7	3.4	0.8	130	12-13	1 x 36 x 4	210
SSA 30 6J	30	6.0 x 30.0	0.25	12.2	7.5	4.1	170	12-13	1 x 36 x 4	258
SSA 32 6J	32	6.0 x 32.0	0.25	9.7	5.4	2.3	160	12-13	1 x 36 x 4	272
SSA 35 6J	35	6.0 x 35.0	0.25	6.4	2.6	--	200	12-13	1 x 36 x 4	294
SSA 35 7J	35	6.75 x 35.0	0.25	7.6	3.1	--	150	14.625	1 x 36 x 4	290

*For 1/2 ft increments, add -6 to the pole height. Ex: 20-6 equals 20ft 6in.



POLE DATA						
Shaft base size	Bolt circle (in) A	Bolt projection (in) B	Base square (in) C	Bolt Size	Template description	Anchor bolt description
4C	8.5 - 9.625	3.125	9.938	3/4 x 18 x 3	ABTEMPLATE PJ50045	AB18-0
4G	8.5 - 9.625	3.125	9.938	3/4 x 30 x 3	ABTEMPLATE PJ50045	AB30-0
5	10.5 - 11.5	3.25	11.563	3/4 x 30 x 3	ABTEMPLATE PJ50046	AB30-0
6	12-13	4	12.25	1 x 36 x 4	ABTEMPLATE PJ50044	AB36-0
7	14.625	4.125	15	1 x 36 x 4	ABTEMPLATE PJ50130	AB36-0

HANDHOLE ORIENTATION



IMPORTANT INSTALLATION NOTES:

- **Do not** erect poles without having fixtures installed.
- Factory-supplied templates must be used when setting anchor bolts. Lithonia Lighting will not accept claim for incorrect anchorage placement due to failure to use factory template.
- If poles are stored outside, all protective wrapping must be removed immediately upon delivery to prevent finish damage.
- Lithonia Lighting is not responsible for the foundation design.