



MILBANK
ENERGY AT WORK

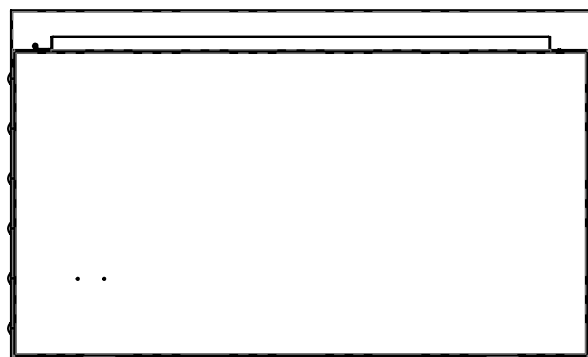
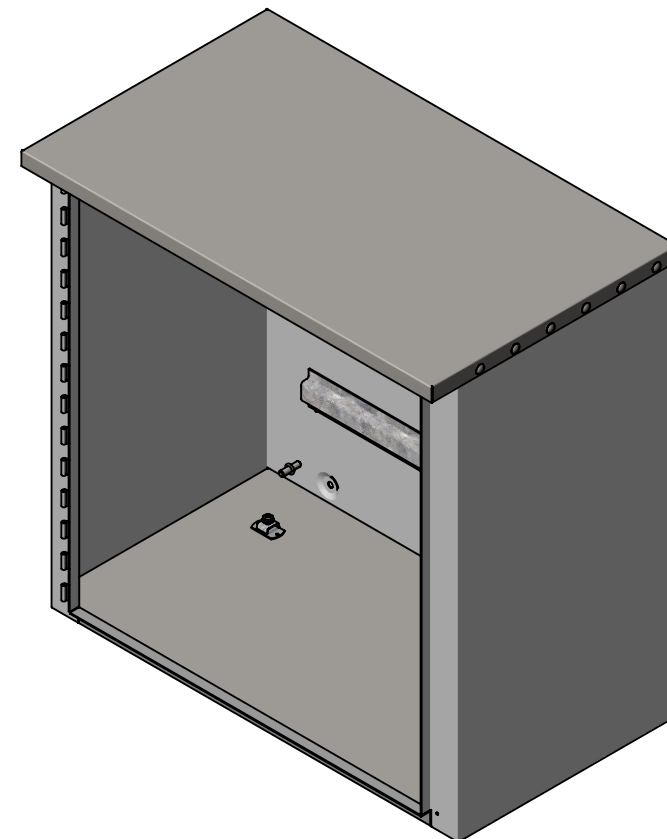
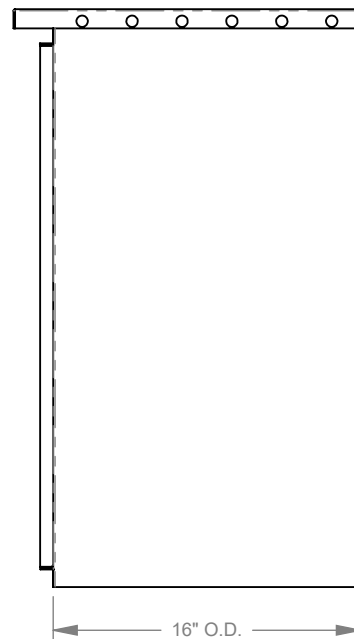
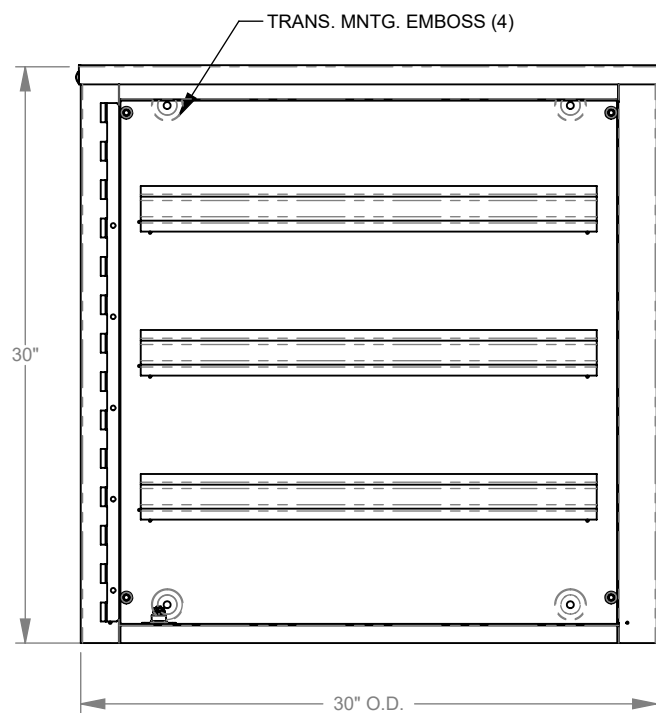
303016-LC3R-WHP



Catalog Number	303016-LC3R-WHP
Marketing Product Description	30x16x30 Hinge Cover Type 3R UL Listed Steel No Knockouts ANSI 61 Gray Padlocking Wing Handle Draw Shield Continuous Hinge Back Stiffeners
UPC	784572257061
Length (IN)	16
Width (IN)	30
Height (IN)	30
Weight (LB)	95
Brand Name	Milbank
Type	Hinge Cover
Application	Enclosure for Mounting Electrical Equipment
Standard	UL Listed
Number Of Outlet	0
Material	G90 Galvanized Steel with Powder Coat Finish
Size	30 In x 16 In x 30 In
Color	ANSI 61 Gray
Construction	Welded
Cable Entry	No Knockouts
Mounting	Wall Mount
NEMA Rating	Type 3R

Hinge Type	Continuous Hinge with Removable Pin
Top	Drip Shield Top
Door	1 Door
Latch	Pad Locking Wing Handle
Support	Body Stiffeners

Please consult serving utility for their requirements prior to ordering or installing, as specifications and approvals vary by utility and may require local electrical inspector approval. All installations must be installed by a licensed electrician and must comply with all national and local codes, laws and regulations. Milbank reserves the right to make changes in specifications and features shown without notice or obligation.



MILBANK
ENERGY AT WORK

Version:

1

**All dimensions are +/- 1/16".
Drawing views are not to scale.**

Please consult serving utility for their requirements prior to ordering or installing, as specifications and approvals vary by utility, and may require local electrical inspector approval. All installations must be installed by a licensed electrician and must comply with all national and local codes, laws and regulations. Milbank reserves the right to make changes in specifications and features shown without notice or obligation.