

**W** SERIES

# W/L

LED/T5/T8 WALL BRACKET



DESIGNED  
WITH **STYLE** AND  
FUNCTIONALITY



**LITHONIA LIGHTING**

# NEW WALL BRACKET SOLUTIONS

The W SERIES wall bracket with improved aesthetics and integrated controls inspires and performs.

## ARCHITECTURAL DESIGN

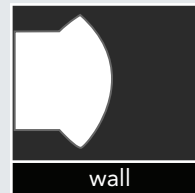
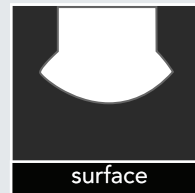
The W SERIES architectural bracket is an advanced wall bracket and corridor luminaire, enhanced by a sleek and minimalist design with flexible integrated controls. The linear fluted diffuser complements our popular RT, VT and ST SERIES volumetric products and offers coordinated styles for a multitude of lighting applications. Ideal for corridors, stairwells and bathrooms, the new aesthetic fits in traditional and contemporary environments.

## PERFORMANCE AND VALUE

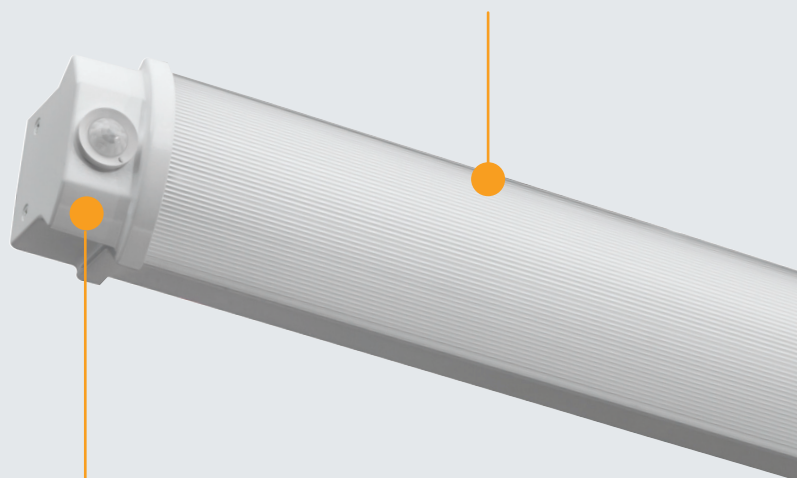
Performance and quality are hallmarks of the W SERIES while maintaining price points suitable for most commercial interiors. The integrated occupancy sensor adds to energy saving features allowing the fixture to power off when unoccupied or dim from 5% to 100%. Efficiency and high quality illumination make this wall bracket preferable for meeting the most rigorous requirements for energy consumption and sustainable design.

## OCCUPANCY SENSING AND SEQUENTIAL CONTROLS

Integral control options include dual technology micro-sensor and short range sequential stairwell option. The sequential control options keep occupants safe and comfortable while saving energy and money when not in use. The sensor is designed with "fail-to-on" feature preventing any disruption in operation.



Easily configured to surface or wall mount applications for a wide variety of interior surfaces.



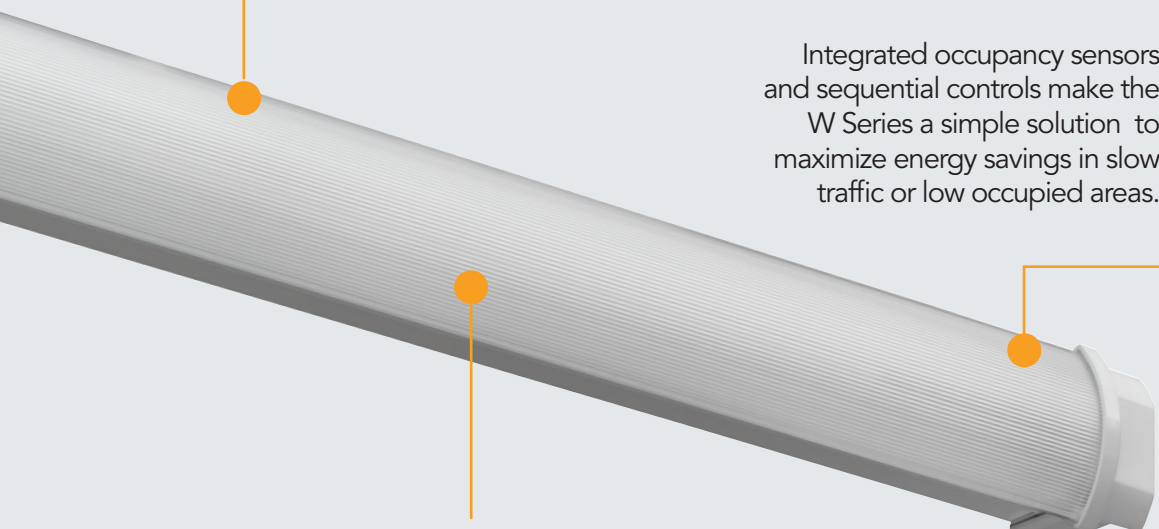
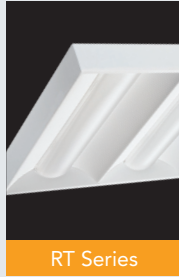
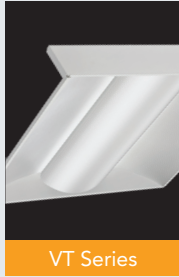
**Integrated Occupancy Sensor**  
Integral control options include dual technology micro-sensors to enhance your energy savings capabilities. Fixture can be ordered with standard pre-programmed occupancies or unoccupied light levels.

# SUPERIOR AESTHETICS AND ADVANCED CONTROL OPTIONS

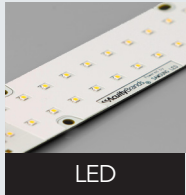
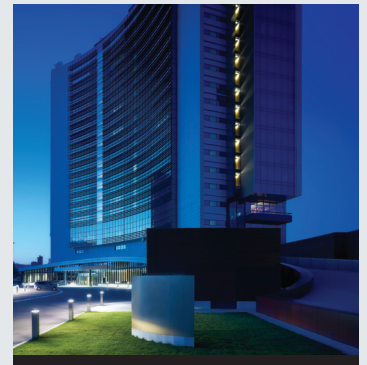


Aesthetic design complements volumetric architectural products for a coordinated visual appearance — while addressing a broad range of mounting and distribution requirements.

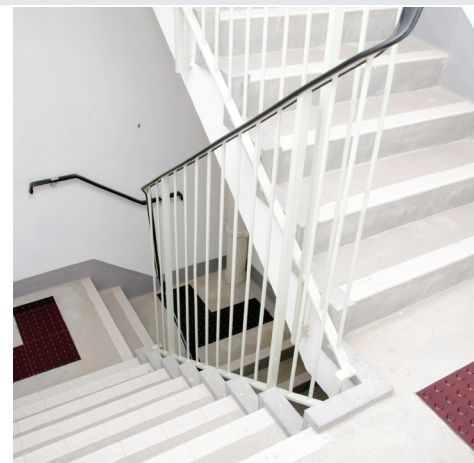
# W SERIES



Integrated occupancy sensors and sequential controls make the W Series a simple solution to maximize energy savings in slow traffic or low occupied areas.



Available with advanced LED technology, refractive optics, and control technologies that achieve an unprecedented level of performance, design and user simplicity.



**ORDERING INFORMATION**

Lead times will vary depending on options selected. Consult with your sales representative.

**Example: WL4 25L D26 LP835 NXN80**

| WL         |                   |                     |         |                  |                     |         |                  |                   |                     |          |   |   |
|------------|-------------------|---------------------|---------|------------------|---------------------|---------|------------------|-------------------|---------------------|----------|---|---|
| Series     |                   | Lumens <sup>1</sup> | Voltage |                  | Finish <sup>9</sup> | Wattage |                  | Color Temperature |                     | Controls |   | Options   |
| <b>WL2</b> | 2' Wall-mount LED | 13L <sup>2</sup>    | (blank) | MVOLT (120-277V) | (blank) White       | D15     | 15W <sup>6</sup> | LP835             | 82 CRI, 3500 Kelvin | NX       | Less dimming or nLIGHT  | EL14L LED Emergency battery pack (nominal 1400 lumens); see Life Safety section <sup>8</sup><br><br>SC Surface conduit end cap provisions |
|            |                   | 18L <sup>3</sup>    | 347     | 347V             |                     | D20     | 20W <sup>6</sup> | LP840             | 82 CRI, 4000 Kelvin | N80      | nLIGHT with 80% (L80) lumen management  |   |
| <b>WL4</b> | 4' Wall-mount LED | 25L <sup>4</sup>    |         |                  |                     | D24     | 24W <sup>6</sup> | LP850             | 82 CRI, 5000 Kelvin | N80EMG   | nLIGHT with 80% (L80) lumen management for use with generator supply EM power   |   |
|            |                   | 40L <sup>5</sup>    |         |                  |                     | D45     | 45W <sup>6</sup> |                   |                     | N100     | nLIGHT with 100% (L100) lumen management  |   |
|            |                   |                     |         |                  |                     |         |                  |                   |                     | N100EMG  | nLIGHT with 100% (L100) lumen management for use with generator supply EM power |   |

**Notes**

1. Approximate lumen output.
2. For use with WL2 only, requires D13 driver.
3. For use with WL2 only, requires D20 driver.
4. For use with WL4 only, requires D24 driver.
5. For use with WL4 only, requires D24 driver.
6. Not available for use with WL2
7. Actual wattage may differ by +/- 5% when operating between 120-277V +/-10%.
8. See Integral Occupancy Control section in header.
9. Requires N80 or N100
10. Not available with WL2; not available with 347V
11. For additional pain finishes refer to Architectural Colors.

**ORDERING INFORMATION**

Lead times will vary depending on options selected. Consult with your sales representative.

**Example: WT5 2 28T5 MVOLT GEB10PS**

| WT         |                 |                 |           |                  |  |         |         |  |         |   |  |  |
|------------|-----------------|-----------------|-----------|------------------|--|---------|---------|--|---------|---|--|--|
| Series     |                 | Number of Lamps | Lamp Type |                  | Diffuser Type                                  | Voltage | Ballast |  | Options |   |  |  |
| <b>WT5</b> | T5, 1 or 2-lamp | 1               | 17        | 17W T8 (24")     | (blank) Linear facted impact modified diffuser | 120     | GEB10IS | .88 ballast factor, instant start <sup>1</sup>               | CO      | Grounded convenience outlet, 120V only (lower right)                                |  |  |
|            |                 | 2               | 32        | 32W T8 (48")     |  | 277     | BSNP    | .88 ballast factor, setp dimming, program start <sup>1</sup> | S1      | Pull-chainswitch; installed bottom right; on/off operation of all lamps (120V only) |  |  |
| <b>WT8</b> | T8, 1 or 2-lamp | Not Incl.       | 14T5      | 14W T5 (22-1/2") |  | 347     |         |  | EL      | Emergency Battery pack (nominal 300 lumens) <sup>6</sup>                            |  |  |
|            |                 |                 | 24T5H0    | 24T5H0 (22-1/2") |  | MVOLT   | GEB95   | .95 ballast factor <sup>2</sup>                              | EL14    | Emergency Battery pack (nominal 1400 lumens) <sup>6</sup>                           |  |  |
|            |                 |                 | 28T5      | 28W T5 (46-1/2") |  |         | GEB95S  | 95 ballast factor, step dimming <sup>2</sup>                 | SC      | Surface conduit end cap provisions  |  |  |
|            |                 |                 | 54T5H0    | 54T5H0 (46-1/2") |  |         | GEB115  | 1.15 ballast factor <sup>2</sup>                             | GMR     | Internal fast-blow fuse <sup>7</sup>  |  |  |
|            |                 |                 |           |                  |  |         | GEB115S | 1.15 ballast factor, step dimming <sup>2</sup>               | GMF     | Internal slow-blow fuse <sup>7</sup>  |  |  |
|            |                 |                 |           |                  |  |         | GEB10PS | 1.0 ballast factor, program start                            | LP_     | Lamped; specify lamp type and color   |  |  |
|            |                 |                 |           |                  |  |         |         |  | CSA     | Listed and labeled to comply with Canadian Standards                                |  |  |

**Notes**

1. Only available with T8 lamp types.
2. Only available with T5 lamp types.
3. Not available with instant start ballast
4. Not available with WT5 1-lamp configurations
5. Requires dimming ballast
6. Not available with WT5 14T5 or 24T5H0; not available with WT8 battery pack configurations.
7. Must specify voltage