

**OVERVIEW**

As the name suggests, the nPS 80 power supply contributes power to the nLight system. By connecting directly to the nLight communication bus, the nPS 80's generated power (up to 80mA at 15 VDC) is accessible to any system device. For simplifying installation, the nPS 80 has an elongated chase nipple. This feature allows it to be attached either directly through a 1/2" knockout into a junction box, or inside an adjacent box for meeting specific local code requirements in ceiling plenums. The nPS 80 has two RJ-45 ports, each that is current limited to 40 mA, making wiring with standard CAT-5e cabling easy and clean.

**nLight Operation**

The nPS 80 power supply contributes power over the nLight bus and communicates with other nLight devices or the SensorView software.

**FEATURES**

- Provides system power over CAT-5e
- Extended chase nipple
- Plenum rated
- Green LED Indicator
- Programmable return to last state capability

**Buy American Act**

Product with the BAA option is assembled in the USA and meets the Buy America(n) government procurement requirements under FAR, DFARS and DOT regulations.

**Build America Buy America**

Product with the BAA option also qualifies as produced in the United States under the definitions of the Build America, Buy America Act.

Please refer to [www.acuitybrands.com/buy-american](http://www.acuitybrands.com/buy-american) for additional information.

**Warranty**

Five-year limited warranty. This is the only warranty provided and no other statements in this specification sheet create any warranty of any kind. All other express and implied warranties are disclaimed. Complete warranty terms located at: [www.acuitybrands.com/support/warranty/terms-and-conditions](http://www.acuitybrands.com/support/warranty/terms-and-conditions)

**Note:** Actual performance may differ as a result of end-user environment and application.

Specifications subject to change without notice.



*nPS 80  
nLight Power Supply*



This item is an A+ capable component, which has been designed and tested to provide out-of-the-box luminaire compatibility with simple commissioning, when included as part of an A+ Certified™ Solution.

To learn more about A+, visit [www.acuitybrands.com/aplus](http://www.acuitybrands.com/aplus).



Items marked by a shaded background qualify for the Design Select program and ship in 15 days or less. To learn more about Design Select, visit [www.acuitybrands.com/designselect](http://www.acuitybrands.com/designselect).

\*See ordering tree for details



ds Design Select options indicated by this color background.

**ORDERING INFORMATION**

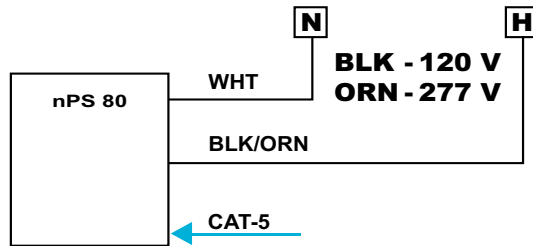
nPS 80		Example: nPS 80 LT	
Series	Voltage	Temp/Humidity	Buy America(n) <sup>1</sup>
nPS 80 nLight Power Supply	[blank] 120/277VAC 347 120/347VAC	[blank] Standard LT Low temp	[blank] Standard BAA Buy America(n) Act and/or Build America Buy America Qualified

**Notes:**

1. Not available with 347 or LT options

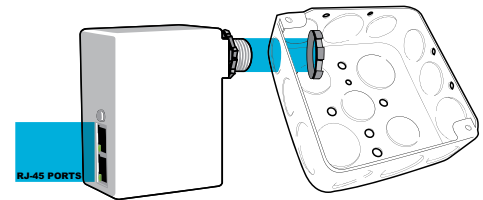
## WIRING (DO NOT WIRE HOT)

Use the black wire if connecting to 120 VAC. Use the orange wire if connecting to 277 VAC. 347 VAC units will have a red input wire instead of the orange wire. T568B pin/pair assignment is recommended for all CAT-5e cables.



## INSTALLATION

- Mount to any junction box through a 1/2" knockout (note: chase nipple is long enough to accommodate mounting inside an adjacent box if necessary)
- Connect unit's Class 1 wires to line voltage feed
- Interconnect unit (via RJ-45 ports) with other nLight devices in lighting zone using CAT-5e cables



## SPECIFICATIONS

---

### Electrical

**Input Ratings** 120/277VAC, 50/60 Hz  
120/347VAC, 50/60 Hz (with 347 option)

**Low Voltage Output Ratings** 15VDC, 40mA per RJ-45 Port (80mA total)

**Standards/ Ratings** Energy Management Equipment, UL916 (E167435)

---

### Mechanical

**Dimensions** 3.38"H x 2.53"W x 1.83"D (86mm x 64mm x 47mm) - does not include 1/2" chase nipple

**Mounting** 1/2" Knockout (7/8" hole)

**Color** White

**Connection Type** RJ-45 nLight Network Ports (2)  
Line Voltage Leads

---

### Environmental

**Warrantied Operating Temperature** 14°F to 156°F (-10°C to 69°C)

**Relative Humidity** Up to 90%, Non-Condensing

**Standards/ Ratings** RoHS, Plenum UL2043

---

### General

**Standards/ Ratings** System Component to aid in compliance with Title 24, ASHRAE 90.1, IECC