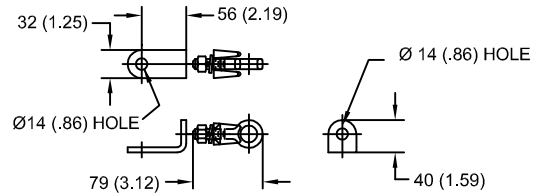
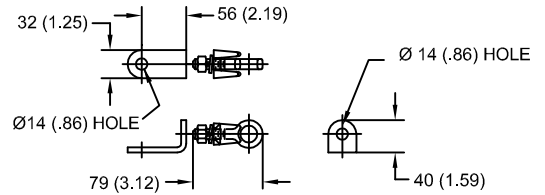


LINE TERMINAL DETAIL



HDG TERMINAL BRACKET, PART No. 89606-4001
 ONE HDG TERMINAL, PART No. 271414-3001
 SUITABLE FOR Cu OR Al CONDUCTOR SIZE
 Ø 7 (.25) - Ø 21 (.81) DIA
 25 - 240 sq mm
 AWG#4 - 500 MCM

GROUND TERMINAL DETAIL



HDG TERMINAL BRACKET, PART No. 89606-4001
 ONE HDG TERMINAL, PART No. 271414-3001
 SUITABLE FOR Cu OR Al CONDUCTOR SIZE
 Ø 7 (.25) - Ø 21 (.81) DIA
 25 - 240 sq mm
 AWG#4 - 500 MCM

CHARACTERISTICS	
RATED VOLTAGE	18 kVrms
MCOV	15.3 kVrms
MASS	7.8 kg (17.3 lb)
COG ABOVE BASE	173 (6.8)
CREEPAGE DISTANCE	898 (35.4)
STRIKE DISTANCE	267 (10.5)
LIGHTNING IMP W/S	153 kVpk
SWITCHING IMP W/S	128 kVpk
POWER FREQ 60Hz W/S	75 kVrms
TOV 1s NO PRIOR DUTY	21.7 kVrms
TOV 10s NO PRIOR DUTY	20.8 kVrms
TOV 1s W/PRIOR DUTY	21.0 kVrms
TOV 10s W/PRIOR DUTY	20.2 kVrms

CANTILEVER FORCE	
MAXIMUM CONTINUOUS	2646 N (595 lbs)
ULTIMATE (max pk)	5293 N (1190 lbs)

RECOMMENDED CLEARANCE (CENTER - CENTER)	
PHASE TO GROUND	155 (6.1)
PHASE TO PHASE	269 (10.6)

- NOTES:
 1. DIMENSIONS IN millimeters(inches) SUBJECT TO ±3% TOLERANCE
 2. CLEARANCE AND INSULATION W/S VOLTAGE APPLY AT SEA LEVEL
 3. ARRESTER SUITABLE FOR OPERATION AT ALTITUDES UP TO 1800 m (6000 ft)
 4. PACKAGED IN A CORRUGATED BOX.

.5μSEC 10kA IR kV	SWITCHING SURGE IR kV		MAXIMUM 8/20 DISCHARGE VOLTAGE - kV AT					
	500 A	1 KA	1.5 kA	3.0 kA	5 kA	10 kA	20 kA	40 kA
51.6	36.1	37.6	38.5	40.4	42.4	45.5	49.1	56.1

ANSI STATION CLASS SURGE ARRESTER Program Revision 2011.06.7.12.40.56 REV DATE 05/03/11	CONFIDENTIAL: THIS DRAWING AND ITS CONTENTS ARE CONFIDENTIAL AND THE EXCLUSIVE PROPERTY OF HUBBELL POWER SYSTEMS. NO PUBLICATION, DISTRIBUTION OR COPIES MAY BE MADE WITHOUT THE WRITTEN CONSENT OF HUBBELL POWER SYSTEMS. HUBBELL POWER SYSTEMS UNPUBLISHED ALL RIGHTS RESERVED UNDER THE COPYRIGHT LAWS.	TITLE EVP ARRESTER 15.3 KV MCOV			
		SIZE S	DWG NO. 11209740	CAT / PART / ASSY NO. EVP001500-3002	REV 0
		DO NOT SCALE THIS DRAWING	DRN BY PRO	DATE 05/03/11	SHEET 1 OF 1