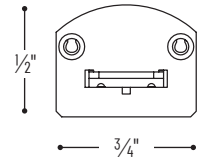


# SILK SBC LED LIGHTBAR

## Uniform Reflectance with NO Diode

The 24V Silk SBC LED Lightbar produces an incredible 350+ lumens per foot while consuming only 5W at 90+ CRI. Silk SBC LED Lightbar eliminates the diode image to provide uniform reflectance of light without the hot spots generated by direct view mounted LEDs. The Solid Bus Connectors (SBC) provide a rigid connection between bars, while the flush mount adjustable mounting brackets allow complete zero to 90 degree adjustment. Silk features an ultra low-profile and is available in five lengths with a variety of contractor-friendly installation accessories. Silk SBC can be used in under cabinet, in cabinet, cove, display, and general commercial, retail and residential lighting applications..



SBC Connector



### FEATURES

- Uniform reflectance with NO diode image
- 350 lumens per foot
- Dedicated CCT (3000K or 4000K) @ 90+ CRI
- Five different lengths; 6", 12", 24", 36" and 48"
- Easy installation with flush mount 0°-90° adjustable mounting brackets (included)
- Solid Bus Connector (SBC) included
- Dimmable with dimmable power supply
- Aluminum and Black (special order) finish
- Can be connected up to 20' per run
- cULus Listed for Damp Location
- 5-Year Limited Warranty



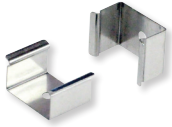
### SILK SBC LED LIGHTBAR

SERIES / LENGTH / LUMEN / WATTAGE	CCT	FINISH
<a href="#">NULB-806LED</a> 6" / 175lm / 2.4W	<b>930</b> 3000K	<b>A</b> Natural Aluminum
<a href="#">NULB-812LED</a> 12" / 350lm / 4.8W	<b>940</b> 4000K	<b>B</b> Black (Special order only)
<a href="#">NULB-824LED</a> 24" / 700lm / 9.6W		
<a href="#">NULB-836LED</a> 36" / 1050lm / 14.2W		
<a href="#">NULB-848LED</a> 48" / 1400lm / 19W		

Example: **NULB848LED930A** - 48" SILK SBC LED Lightbar, 3000K, Natural Aluminum finish

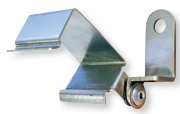


# Silk SBC LED Lightbar Drivers & Accessories



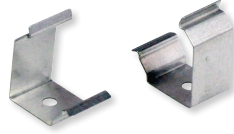
Flat Mounting Clip

**NAL-801** 2 pcs.  
Set of two brackets used to mount fixture flush. Two or three brackets are included with each fixture.



0-90° Adjustable Mounting Clip

**NAL-809** 2 pcs.  
Set of two brackets used angle fixture between 0° to 90°. Two or three brackets are included with each fixture.



SILK SBC Angled Mounting Clip

**NAL-845**  
Used to mount fixture at a 45° angle



Adjustable Mounting Clip

**NAL-880** 2 pcs  
Set of two brackets used angle fixture between 0° to 180°.



Solid Bus Connector (SBC)

**NAL-800**  
Used to join two fixtures seamlessly together. One included with each fixture.



Power Line Cable with RCA Jack

**NAL-808/24W** 24"  
**NAL-808/72W** 72"  
Used to bring power to fixture through RCA jack.



Power Line Cable w/Open Wire

**NAL-810/12W** 12"  
**NAL-810/72W** 72"  
Used to bring power to fixture through an open wire



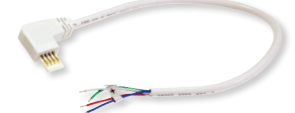
Power Line Cable w/ Terminal Block

**NAL-812TBW** 12"  
**NAL-872TBW** 72"  
Used to bring power to fixture through terminal block.



Side Power Line Cable w/RCA Jack

**NAL-807W** 12" Right Feed  
**NAL-807LW** 12" Left Feed  
**NAL-807/72W** 72" Right Feed  
**NAL-807/72LW** 72" Left Feed  
Used to bring power to fixture through RCA jack at a 90° angle.



Side Power Line Cable w/Open Wire

**NAL-811/12W** 12" Right Feed  
**NAL-811/12LW** 12" Left Feed  
**NAL-811/72W** 72" Right Feed  
**NAL-811/72LW** 72" Left Feed  
Used to bring power to fixture through an open wire at a 90° angle.



Interconnection Cable

**NAL-802W** 2"  
**NAL-806W** 6"  
**NAL-812W** 12"  
**NAL-824W** 24"  
**NAL-872W** 72"  
Used to join two fixtures together or to in-line dimmer or motion sensor.



In-Line Touch Dimmer Control

**NAL-855**  
Tap "On" for 100%, tap again for 75%, again for 50%, again for 25%, and again for "Off." No Power failure memory.



In-Line Motion Sensor

**NAL-830** 2" Interconnection Cable  
12' maximum activation distance; 20 seconds auto off; 120° detection zone; Max load 4A



24V Direct Plug-In LED Driver Non-Dimmable

**NATL-524 (B,W)** 24W  
**NATL-545 (B,W)** 4 5W  
Allows direct connection to a wall outlet with 6' cord and plug. Requires power line cable. Available in black or white.



24V Direct Plug-In LED Driver Non-Dimmable

**NATL-596 (B,W)** 96W  
Allows direct connection to a wall outlet with 5' cord and 44" power line connector. Requires power line cable. Available in black or white.



24V Class II Hardwire LED Driver Non-Dimmable

**NATL-5030HW** 30W  
**NATL-5060HW** 60W  
**NATL-5100HW** 100W  
Allows hardwiring. Includes 10' power line connector (NALT-10). Requires power line cable.



24V Class II Hardwire LED Driver MLV dimming

**NMT-303/24C2D1** 300W  
(3) 100W Breakers with integral regulator for constant current and voltage. Includes 10' power line connector (NALT-10). Requires power line cable.



24V Class II Hardwire LED Driver 0-10V dimming

**NATL-5096-24-HWD10** 96W  
Allows hardwiring. Includes 10' power line connector (NALT-10). Requires power line connector cable



24V Class II Hardwire LED Driver MLV dimming

**NMTD-60/24D** 60W  
**NMTD-96/24D** 96W  
Integral regulator for constant current and voltage. Includes 10' Power Line Connector (NALT-10). Requires power line connector cable



24V Class II Hardwire LED Driver with Constant Voltage, ELV dimming

**NATLED-5040HW** 40W  
**NATLED-5075HW** 75W  
for constant current and voltage. Includes 10' power line connector (NALT-10).



Power Line Connector

**NALT-10** 10' Cable  
**NALT-30** 30' Cable  
Carries output from driver, requires power line cable. For use with Class II drivers



Touch Dimmer with Memory

**NATL-518 (B,W)** 72W max., no power fail memory, touch on / off and hold to dim. Available in black or white.



Low Voltage Splice Box

**NATL-415W**  
Joins low voltage lead to low voltage power line connector or interconnector.



16AWG In-Wall Rated Wire

**NATL-W16-2-1** 1'  
**NATL-W16-2-20** 20'  
**NATL-W16-2-250** 250'  
Low voltage Class II two-conductor wire



24V Nexus Driver / Dimmer Switch

**NATL-SWEX60/24A** 60W  
**NATL-SWEX100/24A** 100W  
**NATL-SWEX/3FP** 3 Face Plates  
Eliminates the driver and allows 120V input and 24V output from a single gang box. 100-5% dimming and on/off switch. Requires power line cable.

Power Line Splitter

**NATL-302 (B,W)** 5' Cable  
Splits power line connector into two separate leads, requires power line cables. Available in black or white.

DC Plug & Play Motion Sensor

**NAL-856W**  
12' Max activation distance; 20 second auto off; 120° detection zone; Max Load 4A.

4-Way Terminal/Splitter Block

**NATL-407** 4-Way  
2-3/8" L x 1-1/8" W x 7/8" D

**NATL-408** 8-Way  
4" L x 1-1/8" W x 7/8" D