

## PanelView Plus 7 Performance Terminals

Catalog Numbers 2711P-T7C22D9P, 2711P-T7C22D9P-B, 2711P-T7C22A9P, 2711P-T7C22A9P-B, 2711P-B7C22D9P, 2711P-B7C22D9P-B, 2711P-B7C22A9P, 2711P-B7C22A9P-B, 2711P-T9W22D9P, 2711P-T9W22D9P-B, 2711P-T9W22A9P, 2711P-T9W22A9P-B, 2711P-T10C22D9P, 2711P-T10C22D9P-B, 2711P-T10C22A9P, 2711P-T10C22A9P-B, 2711P-B10C22D9P, 2711P-B10C22D9P-B, 2711P-B10C22A9P, 2711P-B10C22A9P-B, 2711P-T12W22D9P, 2711P-T12W22D9P-B, 2711P-T12W22A9P, 2711P-T12W22A9P-B, 2711P-T15C22D9P, 2711P-T15C22D9P-B, 2711P-T15C22A9P, 2711P-T15C22A9P-B, 2711P-B15C22D9P, 2711P-B15C22D9P-B, 2711P-B15C22A9P, 2711P-B15C22A9P-B, 2711P-T19C22D9P, 2711P-T19C22D9P-B, 2711P-T19C22A9P, 2711P-T19C22A9P-B

Topic	Page
Environmental Specifications	2
Certifications	3
Technical Specifications	4
Product Dimensions	7
Accessories	8
HMI Software	9
Additional Resources	10

### Summary of Changes

Topic	Page
Updated system memory to 512 MB RAM and 512 MB storage. Updated user memory to 80 MB, approx, nonvolatile storage for applications.	4, 5, 6

The PanelView™ Plus 7 Performance terminals are operator interface devices. They monitor and control devices that are attached to ControlLogix® and CompactLogix™ 5370 controllers on an EtherNet/IP network. Animated graphic and text displays provide operators a view into the operating state of a machine or process. Operators interact with the control system by using touch screen or keypad input.



Features include the following:

- FactoryTalk® View Machine Edition software, version 8.1, provides a familiar environment for creating HMI applications
- Windows CE operating system with desktop access for configuration and third-party applications
- Connection to ControlLogix or CompactLogix 5370 controllers
- Ethernet communication that can support Device Level Ring (DLR), linear, or star network topologies
- Web browser, Microsoft file viewers, text editor, PDF viewer, remote desktop connection, and media player on the terminal desktop

## Environmental Specifications

This table lists environmental specifications for the PanelView Plus 7 Performance terminals.

Attribute	Value
Temperature, operating <sup>(1)</sup>	0...55 °C (32...131 °F)
Temperature, nonoperating	-25...+70 °C (-13...+158 °F)
Heat dissipation <sup>(2)</sup>	7-in. DC (touch, and touch with keypad), 51 BTU (typical) 7-in. AC (touch, and touch with keypad), 53 BTU (typical) 9-in. DC, 55 BTU (typical) 9-in. AC, 58 BTU (typical) 10-in. DC (touch, and touch with keypad), 51 BTU (typical) 10-in. AC (touch, and touch with keypad), 56 BTU (typical) 12-in. DC, 60 BTU (typical) 12-in. AC, 67 BTU (typical) 15-in. DC (touch, and touch with keypad), 61 BTU (typical) 15-in. AC (touch, and touch with keypad), 68 BTU (typical) 19-in. DC, 114 BTU (typical) 19-in. AC, 119 BTU (typical)
Altitude, operating	2000M
Relative humidity	5...95% without condensation
Vibration	0.012 pk-pk, 10...57 Hz 2 g peak at 57...500 Hz <sup>(3)</sup>
Shock, operating	15 g at 11 ms
Shock, nonoperating	30 g at 11 ms
Enclosure ratings	NEMA and UL Type 12, 13, 4X, also rated IP66 as Classified by UL

(1) The 19-inch terminals (2711P-T19C22D9P, 2711P-T19C22D9P-B, 2711P-T19C22A9P, and 2711P-T19C22A9P-B) are rated up to 50 °C (122 °F) operating temperature.

(2) Typical BTU measurements were taken at 25 °C (77 °F).

(3) The 15-inch and 19-inch terminals (2711P-T15C22D9P, 2711P-T15C22D9P-B, 2711P-T15C22A9P, 2711P-T15C22A9P-B, 2711P-B15C22D9P, 2711P-B15C22D9P-B, 2711P-B15C22A9P, 2711P-B15C22A9P-B, 2711P-T19C22D9P, 2711P-T19C22D9P-B, 2711P-T19C22A9P, 2711P-T19C22A9P-B) are rated to: 0.006 in. pk-pk, 10...57 Hz, 1 g peak at 57...640 Hz.

## Certifications

This table lists certifications for the PanelView Plus 7 Performance terminals.

Certification <sup>(1)</sup>	Value
cULus	cULus Listed Industrial Control Equipment for use in Hazardous Locations (E10314) per standards ANSI / ISA 12.12.01 and CSA C22.2 No. 213. rated: <ul style="list-style-type: none"> <li>• Class I, Div 2, Groups A, B, C, D</li> </ul> Enclosure type ratings per UL50 and CSA C22.2 No. 94.2-07. Enclosure ingress protection classified by UL per IEC 60529.
CE (EMC)	European Union 2004/108/EC EMC Directive, compliant with: <ul style="list-style-type: none"> <li>• EN 61000-6-2; Industrial Immunity</li> <li>• EN 61000-6-4; Industrial Emissions</li> <li>• EN 61131-2; Programmable Controllers</li> </ul>
CE (LVD)	European Union 2006/95/EC Low Voltage Directive, compliant with: <ul style="list-style-type: none"> <li>• EN 61131-2; Programmable Controllers</li> </ul>
RCM	Australian Radiocommunications Act, compliant with: <ul style="list-style-type: none"> <li>• AS/NZS CISPR 11; Industrial Emissions</li> </ul>
RoHS	China RoHS, Turkey RoHS, European RoHS
KCC	Certificate of compliance
EtherNet/IP	ODVA conformance tested to EtherNet/IP specifications

(1) When marked. See the Product Certification link at <http://www.rockwellautomation.com/global/certification/overview.page> for Declarations of Conformity, Certificates, and other certification details.

## Technical Specifications

The tables in this section provide technical specifications for the PanelView Plus 7 Performance terminals.

### PanelView Plus 7 Performance 7-in and 9-in Terminals

Attribute	7-in. Touch 2711P--T7C22D9P, 2711P--T7C22D9P-B <sup>(1)</sup> 2711P-T7C22A9P, 2711P-T7C22A9P-B	7-in. Touch with Keypad 2711P-B7C22D9P, 2711P-B7C22D9P-B <sup>(1)</sup> 2711P-B7C22A9P, 2711P-B7C22A9P-B	9-in. Touch 2711P-T9W22D9P, 2711P-T9W22D9P-B <sup>(1)</sup> 2711P-T9W22A9P, 2711P-T9W22A9P-B
Operator input	Touch	Touch with keypad	Touch
Display type	TFT Color		
Display size, diagonal	6.5-in.	9-in. widescreen	
Viewing area (W x H)	132 x 99 mm (5.2 x 3.9 in.)	196 x 118 mm (7.7 x 4.6 in.)	
Display resolution	640 x 480 VGA, 18-bit color graphics	800 x 480 WVGA, 18-bit color graphics	
Aspect ratio	4:3	5:3	
Brightness, typical	300 cd/m <sup>2</sup> (Nits)		
Backlight life	White light-emitting diode, solid-state Life: 50,000 h min at 40 °C (104 °F) to half-brightness, backlight is not replaceable		
Touch screen	Analog resistive Actuation rating: 1 million presses Operating force: 100 grams		
Battery (real-time clock backup)	Accuracy: +/-2 minutes per month. Battery life: 4 years min at 25 °C (77 °F) Replacement: CR2032 lithium coin cell		
Memory:	<ul style="list-style-type: none"> <li>System</li> <li>User</li> </ul>		
Secure Digital (SD) card slot	<ul style="list-style-type: none"> <li>512 MB RAM and 512 MB storage</li> <li>80 MB, approx, nonvolatile storage for applications</li> </ul>		
USB ports:	One SD card slot for external storage; supports cat. no. 1784-SDx cards		
• Host	<ul style="list-style-type: none"> <li>Two USB high-speed 2.0 host ports (type A) support removable flash drives for external storage</li> <li>One high-speed 2.0 device port (type B) that will be functional in a future release</li> </ul>		
• Device			
Operating system	Windows CE with Extended Features and MS Office Viewers (includes FTP, VNC client server, ActiveX controls, PDF reader, third-party device support)		
Ethernet ports	Two 10/100Base-T, Auto MDI/MDI-X Ethernet ports that support Device Level Ring (DLR), linear, or star network topologies		
Software	FactoryTalk View Studio for Machine Edition, FactoryTalk ViewPoint, version 2.6 or later		

#### Electrical

Input voltage	24V DC nom (18...30V DC)	100...240V AC	24V DC nom (18...30V DC)	100...240V AC	24V DC nom (18...30V DC)	100...240V AC
Power consumption	50 W max (2.1 A at 24V DC)	105VA	50 W max (2.1 A at 24V DC)	105VA	50 W max (2.1 A at 24V DC)	105VA
Power supply	Supports (SELV) and (PELV) 24V DC supplies <sup>(2)</sup>	—	Supports (SELV) and (PELV) 24V DC supplies <sup>(2)</sup>	—	Supports (SELV) and (PELV) 24V DC supplies <sup>(2)</sup>	—

#### Mechanical

Weight, approx	1.2 kg (2.65 lb)	1.47 kg (3.25 lb)	1.58 kg (3.48 lb)
Dimensions, approx (H x W x D)	170 x 212 x 69.6 mm 6.69 x 8.35 x 2.74 in.	179 x 285 x 69.6 mm 7.05 x 11.22 x 2.74 in.	190 x 280 x 69.6 mm 7.48 x 11.02 x 2.74 in.
Cutout dimensions, approx (H x W)	142 x 184 mm 5.59 x 7.24 in.	142 x 237 mm 5.59 x 9.33 in.	162 x 252 mm 6.38 x 9.92 in.

(1) Catalog numbers with a -B extension denote terminals that exclude the Allen-Bradley brand marking. Customers can put their own brand labels on these terminals.

(2) DC-powered terminals support safety extra low voltage (SELV) and protective extra low voltage (PELV) 24V DC power supplies such as cat. nos. 1606-XLP95E, 1606-XLP100E, 2711P-RSACDIN.

## PanelView Plus 7 Performance 10-in and 12-in Terminals

Attribute	10-in. Touch 2711P-T10C22D9P, 2711P-T10C22D9P-B <sup>(1)</sup> 2711P-T10C22A9P, 2711P-T10C22A9P-B	10-in. Touch with Keypad 2711P-B10C22D9P, 2711P-B10C22D9P-B <sup>(1)</sup> 2711P-B10C22A9P, 2711P-B10C22A9P-B	12-in. Touch 2711P-T12W22D9P, 2711P-T12W22D9P-B <sup>(1)</sup> 2711P-T12W22A9P, 2711P-T12W22A9P-B
Operator input	Touch	Touch with keypad	Touch
Display type	TFT Color		
Display size, diagonal	10.4-in.		12.1-in.
Viewing area (W x H)	211 x 158 mm (8.3 x 6.2 in.)		261 x 163 mm (10.3 x 6.4 in.)
Display resolution	800 x 600 SVGA, 18-bit color graphics		1280 x 800 WXGA, 18-bit color graphics
Aspect ratio	4:3		16:10
Brightness, typical	300 cd/m <sup>2</sup> (Nits)		
Backlight life	White light-emitting diode, solid-state Life: 50,000 h min at 40 °C (104 °F) to half-brightness, backlight is not replaceable		
Touch screen	Analog resistive Actuation rating: 1 million presses Operating force: 100 grams		
Battery (real-time clock backup)	Accuracy: +/-2 minutes per month. Battery life: 4 years min at 25 °C (77 °F) Replacement: CR2032 lithium coin cell		
Memory: • System • User	<ul style="list-style-type: none"> <li>• 512 MB RAM and 512 MB storage</li> <li>• 80 MB, approx, nonvolatile storage for applications</li> </ul>		
Secure Digital (SD) card slot	One SD card slot for external storage; supports cat. no. 1784-SDx cards		
USB ports: • Host • Device	<ul style="list-style-type: none"> <li>• Two USB high-speed 2.0 host ports (type A) support removable flash drives for external storage</li> <li>• One high-speed 2.0 device port (type B) that will be functional in a future release</li> </ul>		
Operating system	Windows CE with Extended Features and MS Office Viewers (includes FTP, VNC client server, ActiveX controls, PDF reader, third-party device support)		
Ethernet ports	Two 10/100Base-T, Auto MDI/MDI-X Ethernet ports that support Device Level Ring (DLR), linear, or star network topologies		
Software	FactoryTalk View Studio for Machine Edition, FactoryTalk ViewPoint, version 2.6 or later		

**Electrical**

Input voltage	24V DC nom (18...30V DC)	100...240V AC	24V DC nom (18...30V DC)	100...240V AC	24V DC nom (18...30V DC)	100...240V AC
Power consumption	50 W max (2.1 A at 24V DC)	105VA	50 W max (2.1 A at 24V DC)	105VA	50 W max (2.1 A at 24V DC)	105VA
Power supply	Supports (SELV) and (PELV) 24V DC supplies <sup>(2)</sup>	—	Supports (SELV) and (PELV) 24V DC supplies <sup>(2)</sup>	—	Supports (SELV) and (PELV) 24V DC supplies <sup>(2)</sup>	—

**Mechanical**

Weight, approx	2.28 kg (5.03 lb)	2.58 kg (5.69 lb)	2.54 kg (5.60 lb)
Dimensions, approx (H x W x D)	252 x 297 x 69.6 mm 9.92 x 11.69 x 2.74 in.	252 x 385 x 69.6 mm 9.92 x 15.16 x 2.74 in.	240 x 340 x 69.6 mm 9.69 x 13.39 x 2.74 in.
Cutout dimensions, approx (H x W)	224 x 269 mm 8.82 x 10.59 in.	224 x 335 mm 8.82 x 13.19 in.	218 x 312 mm 8.58 x 12.28 in.

(1) Catalog numbers with a -B extension denote terminals that exclude the Allen-Bradley brand marking. Customers can put their own brand labels on these terminals.

(2) DC-powered terminals support safety extra low voltage (SELV) and protective extra low voltage (PELV) 24V DC power supplies such as cat. nos. 1606-XLP95E, 1606-XLP100E, 2711P-RSACDIN.

**PanelView Plus 7 Performance 15-in and 19-in Terminals**

Attribute	15-in. Touch 2711P-T15C22D9P, 2711P-T15C22D9P-B <sup>(1)</sup> 2711P-T15C22A9P, 2711P-T15C22A9P-B	15-in. Touch with Keypad 2711P-B15C22D9P, 2711P-B15C22D9P-B <sup>(1)</sup> 2711P-B15C22A9P, 2711P-B15C22A9P-B	19-in. Touch 2711P-T19C22D9P, 2711P-T19C22D9P-B <sup>(1)</sup> 2711P-T19C22A9P, 2711P-T19C22A9P-B
Operator input	Touch	Touch with keypad	Touch
Display type	TFT Color		
Display size, diagonal	15-in.		19-in.
Viewing area (W x H)	304 x 228 mm (12.0 x 9.0 in.)		376 x 301 mm (14.8 x 11.9 in.)
Display resolution	1024 x 768 XGA, 18-bit color graphics		1280 x 1024 SXGA, 18-bit color graphics
Aspect ratio	4:3		5:4
Brightness, typical	300 cd/m <sup>2</sup> (Nits)		
Backlight life	White light-emitting diode, solid-state Life: 50,000 h min at 40 °C (104 °F) to half-brightness, backlight is not replaceable		
Touch screen	Analog resistive Actuation rating: 1 million presses Operating force: 100 grams		
Battery (real-time clock backup)	Accuracy: +/-2 minutes per month. Battery life: 4 years min at 25 °C (77 °F) Replacement: CR2032 lithium coin cell		
Memory: • System • User	<ul style="list-style-type: none"> <li>• 512 MB RAM and 512 MB storage</li> <li>• 80 MB, approx, nonvolatile storage for applications</li> </ul>		
Secure Digital (SD) card slot	One SD card slot for external storage; supports cat. no. 1784-SDx cards		
USB ports: • Host • Device	<ul style="list-style-type: none"> <li>• Two USB high-speed 2.0 host ports (type A) support removable flash drives for external storage</li> <li>• One high-speed 2.0 device port (type B) that will be functional in a future release</li> </ul>		
Operating system	Windows CE with Extended Features and MS Office Viewers (includes FTP, VNC client server, ActiveX controls, PDF reader, third-party device support)		
Ethernet ports	Two 10/100Base-T, Auto MDI/MDI-X Ethernet ports that support Device Level Ring (DLR), linear, or star network topologies		
Software	FactoryTalk View Studio for Machine Edition, FactoryTalk ViewPoint, version 2.6 or later		

**Electrical**

Input voltage, DC	24V DC nom (18...30V DC)	100...240V AC	24V DC nom (18...30V DC)	100...240V AC	24V DC nom (18...30V DC)	100...240V AC
Power consumption, DC	50 W max (2.1 A at 24V DC)	105VA	50 W max (2.1 A at 24V DC)	105VA	50 W max (2.1 A at 24V DC)	105VA
Power supply	Supports (SELV) and (PELV) 24V DC supplies <sup>(2)</sup>	—	Supports (SELV) and (PELV) 24V DC supplies <sup>(2)</sup>	—	Supports (SELV) and (PELV) 24V DC supplies <sup>(2)</sup>	—

**Mechanical**

Weight, approx	3.69 kg (8.14 lb)	4.14 kg (9.13 lb)	5.62 kg (12.40 lb)
Dimensions, approx (H x W x D)	318 x 381 x 69.6 mm 12.52 x 15.00 x 2.74 in	329 x 484 x 69.6 mm 12.95 x 19.06 x 2.74 in	411 x 485 x 69.6 mm 16.18 x 19.09 x 2.74 in
Cutout dimensions, approx (H x W)	290 x 353 mm 11.42 x 13.90 in	290 x 418 mm 11.42 x 16.46 in	383 x 457 mm 15.08 x 17.99 in

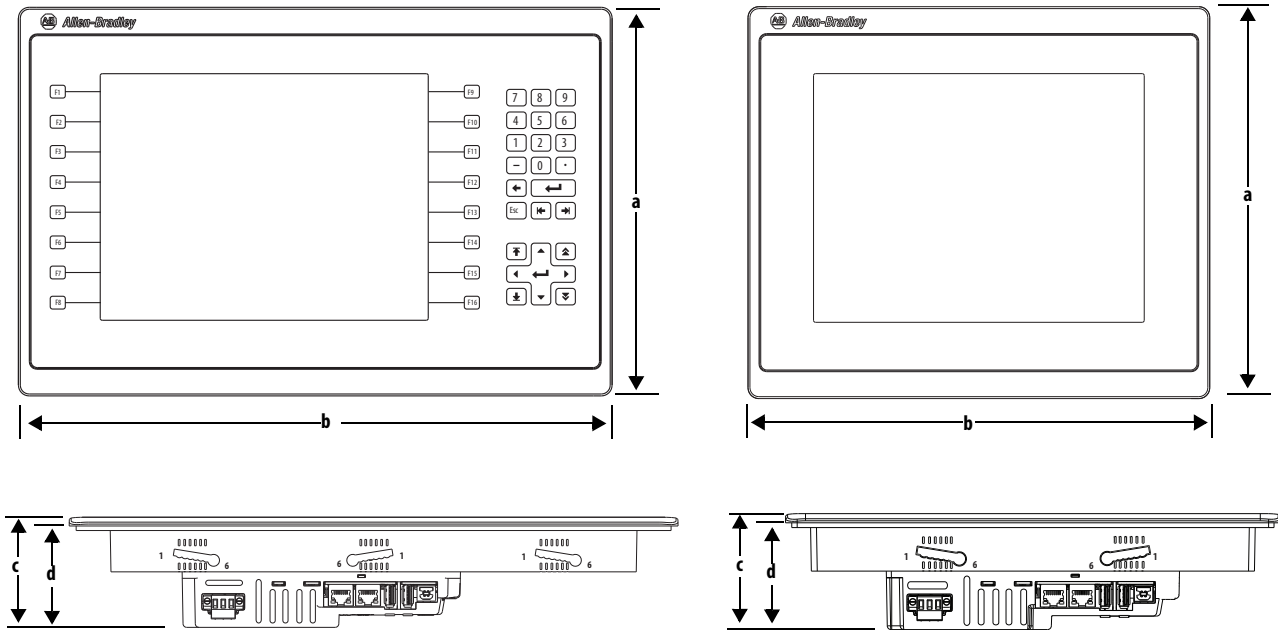
(1) Catalog numbers with a -B extension denote terminals that exclude the Allen-Bradley brand marking. Customers can put their own brand labels on these terminals.

(2) DC-powered terminals support safety extra low voltage (SELV) and protective extra low voltage (PELV) 24V DC power supplies such as cat. nos. 1606-XLP95E, 1606-XLP100E, 2711P-RSACDIN.

## Product Dimensions

The table provides product dimensions. The 10.4-inch touch and combination keypad with touch devices are shown for illustrative purposes. All other terminal sizes look similar.

### PanelView Plus 7 Performance Dimensions - 10.4-in. Model



### Product Dimensions - PanelView Plus 7 Performance Terminals

Terminal Size	Input Type	Height (a) mm (in.)	Width (b) mm (in.)	Overall Depth (c) mm (in.)	Mounted Depth (d) mm (in.)
6.5-in.	Key/touch	179 (7.05)	285 (11.22)	69.6 (2.74)	63.6 (2.50)
	Touch	170 (6.69)	212 (8.35)		
9-in.	Touch	190 (7.48)	280 (11.02)		
10.4-in.	Key/touch	252 (9.92)	385 (15.16)		
	Touch	252 (9.92)	297 (11.69)		
12.1-in.	Touch	246 (9.69)	340 (13.39)		
15-in.	Key/touch	329 (12.95)	484 (19.06)		
	Touch	318 (12.52)	381 (15.00)		
19-in.	Touch	411 (16.18)	485 (19.09)		

**TIP** When mounted in a panel, the front of the bezel extends less than 6.36 mm (0.25 in.) from the front of the panel.

## Accessories

The tables in this section list accessories for the PanelView Plus 7 Performance terminals.

### Protective Overlays

Cat. No. <sup>(1)</sup>	Display Size	Operator Input	
		Touch	Key and Touch
2711P-RGT7SP	6.5-in.	•	
2711P-RGB7P			•
2711P-RGT9SP	9-in. (wide)	•	
2711P-RGT10SP	10.4-in.	•	
2711P-RGB10P			•
2711P-RGT12SP	12.1-in. (wide)	•	
2711P-RGT15SP	15-in.	•	
2711P-RGB15P			•
2711P-RGT19P	19-in.	•	

(1) Three overlays are shipped with each catalog number.

### Power Supplies and Power Terminal Blocks

Cat. No.	Description	Quantity
1606-XLP95E	DIN rail power supply, 24...28V DC output voltage, 95 W	1
1606-XLP100E	DIN rail power supply, 24...28V DC output voltage, 100 W	1
2711P-RSACDIN	DIN rail power supply, AC-to-DC, 85...265V AC, 47...63 Hz	1
2711P-RTBAP	3-pin AC power terminal block	10
2711P-RTBDSP	3-pin DC power terminal block	10

### Mounting Hardware

Cat. No.	Description	Quantity
2711P-RMCP <sup>(1)</sup>	Mounting levers (black)	16

(1) Catalog number 2711P-RMCP mounting levers are used with PanelView Plus 7 Performance terminals. Do not use gray mounting levers; they are not compatible with PanelView Plus 7 Performance terminals.

### Secure Digital (SD) Cards

Cat. No.	Description
1784-SD1	1 GB SD card
1784-SD2	2 GB SD card
2711C-RCSA	USB to SD adapter for SD card

### Battery Replacement

Cat. No.	Description	Quantity
2711P-RY2032	Lithium coin cell battery, CR2032 equivalent	1

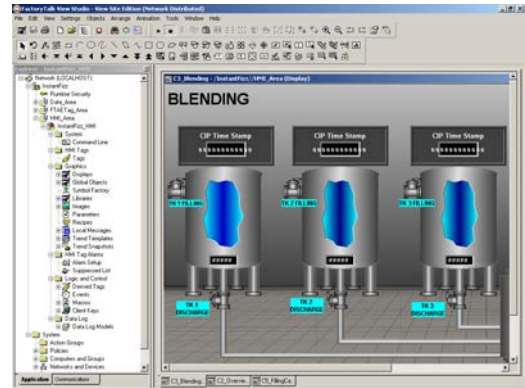


## HMI Software

All PanelView Plus 7 terminals are configured with FactoryTalk View Studio software and have an integrated runtime system called FactoryTalk View Machine Edition Station.

Machine Edition Station runs projects that are developed with FactoryTalk View Studio software and is included on all PanelView Plus 7 terminals.

Two versions of FactoryTalk View Studio software support application development for PanelView Plus 7 terminals.



Cat. No. <sup>(1)</sup>	Description
9701-VWSTMENE	FactoryTalk View Studio for Machine Edition software - Configuration software for developing and testing machine-level human machine interface (HMI) applications. Includes RSLinx® Enterprise and KEPServer Enterprise software.
9701-VWSTENE	FactoryTalk View Studio software - Configuration software for developing and testing machine-level and supervisory-level human machine interface (HMI) applications.

(1) To order localized versions of the software, replace EN in the catalog number with DE for German, FR for French, JP for Japanese, or ZH for Chinese.

You can import PanelView Standard/PanelBuilder® 32 and PanelView applications into FactoryTalk View Studio software as Machine Edition applications by using the Machine Edition Import Wizard. The Import Wizard steps you through a few options such as scaling to a new screen resolution size, and then converts objects, text, tags, and communication configurations to ones that are available in Machine Edition.



FactoryTalk ViewPoint software, an add-on to FactoryTalk View Studio software, allows plant managers, production supervisors, system integrators, and other key stakeholders to view and control real-time plant floor operations remotely from a web browser. FactoryTalk ViewPoint enabled displays are fully scalable and animated in the browser. The remote user can also view displays that are not the active display of the terminal.

Each PanelView Plus 7 terminal contains one license that supports one client connection to the terminal. No additional software is required.

For a complete list of available HMI software, visit <http://www.rockwellautomation.com/rockwellsoftware>.

## Additional Resources

These documents contain more information about related products from Rockwell Automation.

Resource	Description
PanelView Plus 7 Performance Terminals User Manual, publication <a href="#">2711P-UM008</a>	Provides instructions on how to install, configure, and operate the PanelView Plus 7 Performance terminals.
Industrial Automation Wiring and Grounding Guidelines, publication <a href="#">1770-4.1</a>	Provides general guidelines on how to install a Rockwell Automation industrial system.
Product Certifications website, <a href="http://www.rockwellautomation.com/global/certification/overview.page">http://www.rockwellautomation.com/global/certification/overview.page</a>	Provides declarations of conformity, certificates, and other certification details.

You can view or download publications at <http://www.rockwellautomation.com/global/literature-library/overview.page>. To order paper copies of technical documentation, contact your local Allen-Bradley distributor or Rockwell Automation sales representative.

**Notes:**

## Rockwell Automation Support

Use the following resources to access support information.

<b>Technical Support Center</b>	Knowledgebase Articles, How-to Videos, FAQs, Chat, User Forums, and Product Notification Updates.	<a href="http://www.rockwellautomation.com/knowledgebase">www.rockwellautomation.com/knowledgebase</a>
<b>Local Technical Support Phone Numbers</b>	Locate the phone number for your country.	<a href="http://www.rockwellautomation.com/global/support/get-support-now.page">www.rockwellautomation.com/global/support/get-support-now.page</a>
<b>Direct Dial Codes</b>	Find the Direct Dial Code for your product. Use the code to route your call directly to a technical support engineer.	<a href="http://www.rockwellautomation.com/global/support/direct-dial.page">www.rockwellautomation.com/global/support/direct-dial.page</a>
<b>Literature Library</b>	Installation Instructions, Manuals, Brochures, and Technical Data.	<a href="http://www.rockwellautomation.com/literature">www.rockwellautomation.com/literature</a>
<b>Product Compatibility and Download Center (PCDC)</b>	Get help determining how products interact, check features and capabilities, and find associated firmware.	<a href="http://www.rockwellautomation.com/global/support/pcdc.page">www.rockwellautomation.com/global/support/pcdc.page</a>

## Documentation Feedback

Your comments will help us serve your documentation needs better. If you have any suggestions on how to improve this document, complete the How Are We Doing? form at [http://literature.rockwellautomation.com/idc/groups/literature/documents/du/ra-du002\\_-en-e.pdf](http://literature.rockwellautomation.com/idc/groups/literature/documents/du/ra-du002_-en-e.pdf).

Rockwell Automation maintains current product environmental information on its website at <http://www.rockwellautomation.com/rockwellautomation/about-us/sustainability-ethics/product-environmental-compliance.page>.

Allen-Bradley, CompactLogix, ControlLogix, FactoryTalk, PanelBuilder, PanelView, LISTEN. THINK. SOLVE, Rockwell Automation, Rockwell Software, and RSLinx are trademarks of Rockwell Automation, Inc. Trademarks not belonging to Rockwell Automation are property of their respective companies.

Rockwell Otomasyon Ticaret A.Ş., Kar Plaza İş Merkezi E Blok Kat:6 34752 İçerenköy, İstanbul, Tel: +90 (216) 5698400

**[www.rockwellautomation.com](http://www.rockwellautomation.com)**

### Power, Control and Information Solutions Headquarters

Americas: Rockwell Automation, 1201 South Second Street, Milwaukee, WI 53204-2496 USA, Tel: (1) 414.382.2000, Fax: (1) 414.382.4444

Europe/Middle East/Africa: Rockwell Automation NV, Pegasus Park, De Kleetlaan 12a, 1831 Diegem, Belgium, Tel: (32) 2 663 0600, Fax: (32) 2 663 0640

Asia Pacific: Rockwell Automation, Level 14, Core F, Cyberport 3, 100 Cyberport Road, Hong Kong, Tel: (852) 2887 4788, Fax: (852) 2508 1846

Publication 2711P-TD009C-EN-P - July 2016

Supersedes Publication 2711P-TD009B-EN-P - May 2016

Copyright © 2016 Rockwell Automation, Inc. All rights reserved. Printed in the U.S.A.