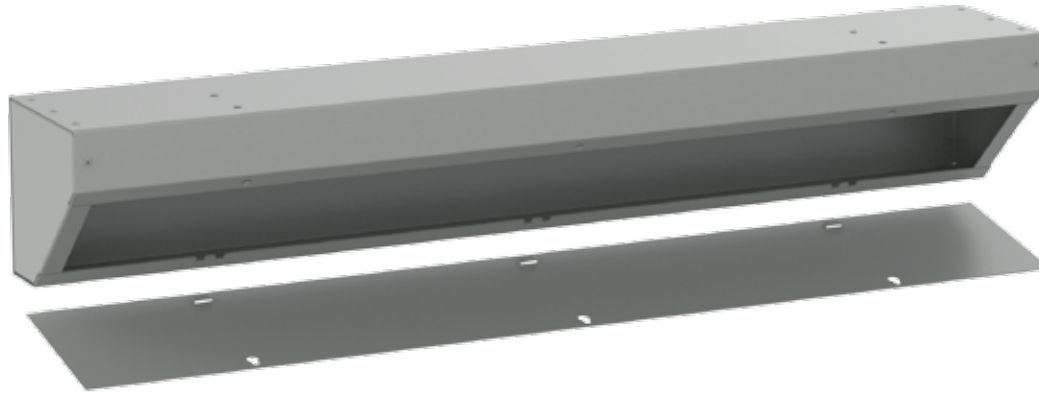


**ANGLED TROUGH, NEMA TYPE 1**

**INDUSTRY STANDARDS**

UL 870 Listed; File No. E27524 cUL CSA C22.2 No. 26 Listed; File No. E27524
--

NEMA/EEMAC: Type 1  
IEC 60529, IP30

**APPLICATION**

The nVent HOFFMAN Angled Trough cuts total installation time by 80%. It eliminates the need for costly 90-degree conduit bends and offers flexibility for wire distribution, making it a time and cost saving solution for contractors. The unique design allows conduit runs through the front of the enclosure, and can be mounted in any corner.

**FEATURES**

- Flexible install allows conduit runs through six sides of enclosure, including the front
- Cleaner appearance requiring less real estate on the wall
- Uniquely designed cover is removable and easy to assemble with half the number of screws
- Easy mounting via holes on the back of the enclosure
- Shipped completely assembled with no end caps to install

**SPECIFICATIONS**

- 16 or 14 gauge steel

**FINISH**

- ANSI 61 gray polyester powder paint finish inside and out

**LEARN MORE:**

<https://hoffman.nvent.com/en/hoffman/Angled-Trough-NEMA-Type-1>

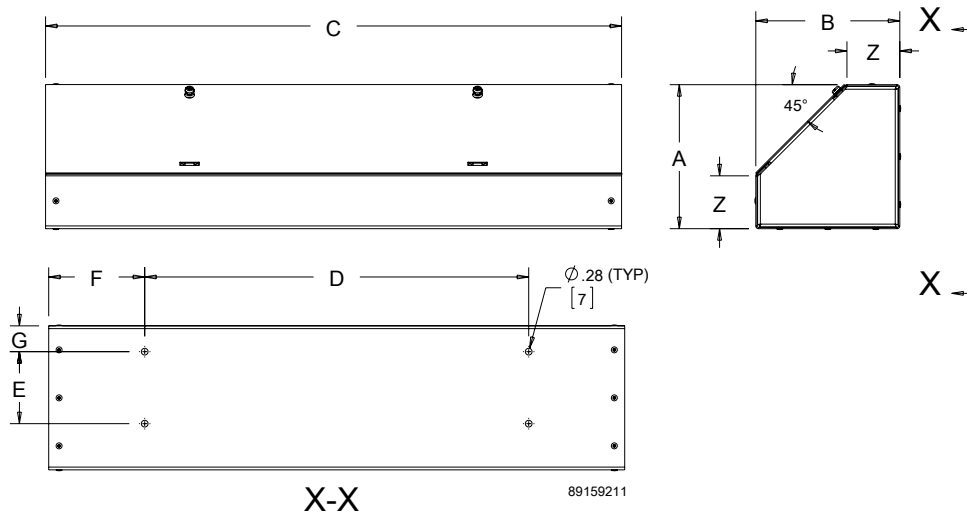
**CALCULATE YOUR SAVINGS:**

<http://angledtrough.com>

**BULLETIN: F40AT**

Standard Product

Catalog Number	AxBxC in./mm	D in./mm	E in./mm	F in./mm	G in./mm	Z in./mm	Max. Conduit size in./mm	No. of Cover Screws	Gauge
AT6612	6.00 x 6.00 x 12.00 152 x 152 x 305	8.00 152	3.00 76	2.00 51	1.08 27	2.25 57	1.25 32	1	16
AT6618	6.00 x 6.00 x 18.00 152 x 152 x 457	10.00 254	3.00 76	4.00 102	1.08 27	2.25 57	1.25 32	2	16
AT6624	6.00 x 6.00 x 24.00 152 x 152 x 610	16.00 406	3.00 76	4.00 102	1.08 27	2.25 57	1.25 32	2	16
AT6636	6.00 x 6.00 x 36.00 152 x 152 x 914	24.00 610	3.00 76	6.00 152	1.08 27	2.25 57	1.25 32	3	16
AT6648	6.00 x 6.00 x 48.00 152 x 152 x 1219	36.00 914	3.00 76	6.00 152	1.08 27	2.25 57	1.25 32	4	16
AT6660	6.00 x 6.00 x 60.00 152 x 152 x 1524	48.00 1219	3.00 76	6.00 152	1.08 27	2.25 57	1.25 32	5	16
AT6672	6.00 x 6.00 x 72.00 152 x 152 x 1829	60.00 1524	3.00 76	6.00 152	1.08 27	2.25 57	1.25 32	6	16
AT8824	8.00 x 8.00 x 24.00 203 x 203 x 610	16.00 406	5.00 127	4.00 102	1.08 27	3.25 83	2.00 51	2	14
AT8836	8.00 x 8.00 x 36.00 203 x 203 x 914	24.00 610	5.00 127	6.00 152	1.08 27	3.25 83	2.00 51	3	14
AT8848	8.00 x 8.00 x 48.00 203 x 203 x 1219	36.00 914	5.00 127	6.00 152	1.08 27	3.25 83	2.00 51	4	14
AT8860	8.00 x 8.00 x 60.00 203 x 203 x 1524	48.00 1219	5.00 127	6.00 152	1.08 27	3.25 83	2.00 51	5	14
AT8872	8.00 x 8.00 x 72.00 203 x 203 x 1829	60.00 1524	5.00 127	6.00 152	1.08 27	3.25 83	2.00 51	6	14
AT101024	10.00 x 10.00 x 24.00 254 x 254 x 610	16.00 406	6.85 174	4.00 102	1.08 27	4.50 114	3.00 76	2	14
AT101036	10.00 x 10.00 x 36.00 254 x 254 x 914	24.00 610	6.85 174	6.00 152	1.08 27	4.50 114	3.00 76	3	14
AT101048	10.00 x 10.00 x 48.00 254 x 254 x 1219	36.00 914	6.85 174	6.00 152	1.08 27	4.50 114	3.00 76	4	14
AT121224	12.00 x 12.00 x 24.00 305 x 305 x 610	16.00 406	9.75 248	4.00 102	1.13 29	4.50 114	3.00 76	2	14
AT121236	12.00 x 12.00 x 36.00 305 x 305 x 914	24.00 610	9.75 248	6.00 152	1.13 29	4.50 114	3.00 76	3	14
AT121248	12.00 x 12.00 x 48.00 305 x 305 x 1219	36.00 914	9.75 248	6.00 152	1.13 29	4.50 114	3.00 76	4	14
AT121260	12.00 x 12.00 x 60.00 305 x 305 x 1524	48.00 1219	9.75 248	6.00 152	1.13 29	4.50 114	3.00 76	5	14
AT121272	12.00 x 12.00 x 72.00 305 x 305 x 1829	60.00 1524	9.75 248	6.00 152	1.13 29	4.50 114	3.00 76	6	14



89159211