

OCC's Category 6A solutions are fully backed by our 25-year performance warranty without the need to perform time consuming alien crosstalk testing. Fully supports 2.5/5/10GBASE-T Ethernet – no need for additional qualification testing.

## COPPER CABLES

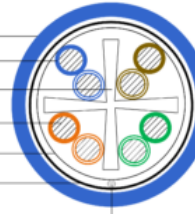
SOLUTION	CABLE	
	CMR	CMP
<b>OCC-CS6500 – CATEGORY 6A SHIELDED</b>	OCC-FTP6A4R-XX	OCC-FTP6A4PLM-xx
<b>OCC-C6500 – CATEGORY 6A SMALL OD UTP</b>	OCC-U6A4SR-XX	OCC-U6A4SPLM-xx

\*xx=COLOR: 01=Yellow; 02=Black; 03=Red; 04=Green; 05=Blue; 06=Data Grey; 07=White; 08=Violet; 09=Orange

### OCC-CS6500

Cross Section Drawing

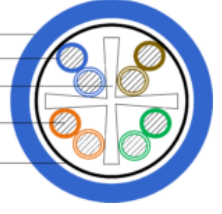
Jacket  
Pair Insulation  
Isolator  
Conductor  
Tape  
Shield  
Drain Wire



### OCC-C6500

Cross Section Drawing

Jacket  
Pair Insulation  
Isolator  
23 AWG Solid Conductor  
Tape



OCC copper cables support all IEEE PoE standards for DC power delivery over 4-pair cabling when installed in accordance with TIA TSB-184-A guidelines.

## KMJ JACKS

DESCRIPTION	OCC PART #
<b>OCC-CS6500 – CATEGORY 6A SHIELDED</b>	K6ASxx
<b>OCC-C6500 – CATEGORY 6A UTP</b>	K6Axx

\*xx=COLOR: 00=Electrical Ivory; 01=Office White; 02=Black; 03=Red; 04=Green; 05=Blue; 06=Grey; 07=White; 08=Orange; 09=Yellow; 10=Purple; 11=Brown; 12=Bright White



## KMJ JACK FEATURES

- » Meets ANSI/TIA-568.2-D Category 6A specifications
- » Supports IEEE 802.3an 10GBASE-T Ethernet
- » Toolless design allows for simple, consistent, reliable terminations (Only applicable for shielded jacks)
- » Zinc alloy shielded housing ensures superior ANEXT performance (Only applicable for shielded jacks)
- » Cat6A UTP jacks accommodate 22-26 AWG conductors
- » Modular Interface: 750 mating cycles
- » UL 1863
- » Available in multiple colors
- » Front face pad printed with durable ink (Only applicable to shielded jacks)

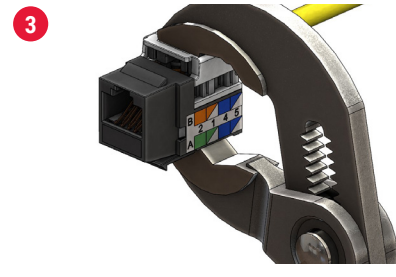
## UNSHIELDED JACKS OFFER THREE TERMINATION OPTIONS



110 IMPACT TOOL



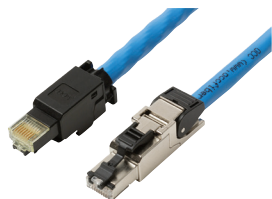
PA8109 TERMINATION TOOL



STUFFER CAP TERMINATION METHOD

## FIELD TERMINABLE PLUGS

DESCRIPTION	OCC PART #
<b>OCC-CS6500 – CATEGORY 6A SHIELDED</b>	OCCSFP6A
<b>OCC-C6500 – CATEGORY 6A UTP</b>	OCCUFP6A



- » ANSI/TIA-568.2-D Category 6A
- » IEC 60603-7-41
- » Supports IEEE 802.3an 10GBASE-T
- » IEEE 802.3bt POE++
- » Accommodates 22-24 AWG conductors
- » Modular Interface: 750 mating cycles
- » 1000 VDC Dielectric Withstand
- » Current Rating (50°C): 1A
- » 500MΩ Insulation resistance
- » Temperature range: -40°C to 70°C
- » Temperature range: -40°C to 85°C (shielded version)
- » UL 1863
- » UL 2043 Certification for use in Air Handling Spaces



## APPLICATIONS

- » Wireless Access Points
- » IP Security Cameras
- » IP Access Control
- » IP Audio
- » Building Automation Devices
- » Data Center Direct Attach Cable Assemblies
- » Transition Cables

## PATCH PANELS

DESCRIPTION	OCC PART #
<b>OCC-CS6500 – CATEGORY 6A SHIELDED</b>	DCC2488/1106A-S DCC4888/1106A-S
<b>OCC-C6500 – CATEGORY 6A UTP</b>	AK24STP6A (Unloaded 24-Port Panel) AK48STP6A (Unloaded 48-Port Panel) DCC2488/1106AN* (24-Port, 1RU) DCC4888/1106AN* (48-Port, 2RU)

\* Includes K6A02 Jacks

## PATCH CORDS

DESCRIPTION	OCC PART #
<b>OCC-CS6500 – CATEGORY 6A SHIELDED</b>	PC6AS-B-xyxy PC6ASMxxByy (28AWG Mini)
<b>OCC-C6500 – CATEGORY 6A UTP</b>	PC6AU-B-xyxy (Standard with Boot)

\*xx\* = LENGTH

\*yy\* = COLOR: 01=Yellow; 02=Black; 03=Red; 04=Green; 05=Blue; 06=Data Grey; 07=White; 08=Orange; 09=Brown; 10=Purple. Also available with Plenum Rating (add "P" to end of part number).

## HEADROOM GUARANTEE TABLE

CATEGORY 6A	OCC-CS6500 (Typical)	OCC-CS6500 (Min Margin)	OCC-C6500 (Typical)	OCC-C6500 (Min. Margin)
Insertion Loss	10%	3%	3%	3%
NEXT	9	4	6	4
PSNEXT	10	5	8	5
ACR	11	7	8	7
PSACR	12	8	10	8
ACR-F (ELFEXT)	8	5	5	4
PSACR-F (PSELFEXT)	8	6	6	5
RL	4	3	7	4
PSANEXT	15	10	1	0
PSAACR-F	15	10	2	2

*OCC-C6500 Example: OCC guarantees a minimum of 4dB headroom above the CAT6A standard for Return Loss (RL) values up to 500 MHz. Many users of OCC-C6500 typically experience performance of 7dB above the Return Loss values in the standard. CAT6A Standard RL Spec at 500MHz is 6dB. OCC Guarantees RL of 10dB. Many users typically experience 13dB.*

### OCC ROANOKE, VA

Corporate Headquarters and Fiber Optic Cable Manufacturing Facility  
5290 Concourse Drive  
Roanoke, VA 24019 USA  
540.265.0690 or 800.622.7711

### OCC DALLAS, TX

Harsh Environment and Specialty Connectivity Manufacturing Facility  
1700 Capital Avenue, Suite 150  
Plano, TX 75074 USA  
972.509.1500 or 877.509.1500

### OCC ASHEVILLE, NC

Enterprise Connectivity Manufacturing Facility  
33 Superior Way  
Swannanoa, NC 28778 USA  
828.298.2260 or 800.880.7674