

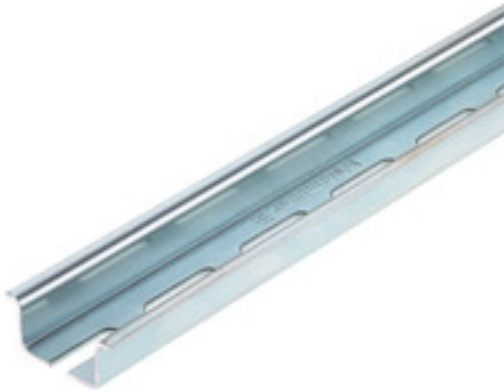
TS 35X15/LL 2M/ST/ZN**Weidmüller Interface GmbH & Co. KG**

Klingenbergstraße 26

D-32758 Detmold

Germany

www.weidmueller.com

Product image

Steel DIN rails are the most widespread on the market. Among metal DIN rails, they have the lowest shortcircuit protection, similar to stainless steel.

General ordering data

| | |
|------------|--|
| Version | Rail, TS 35, TS 35 x 15, with slot, Steel, galvanic zinc plated and passivated |
| Order No. | 0236500000 |
| Type | TS 35X15/LL 2M/ST/ZN |
| GTIN (EAN) | 4008190183967 |
| Qty. | 2 m |

Creation date December 29, 2021 8:55:39 PM CET

Catalogue status 17.12.2021 / We reserve the right to make technical changes.

TS 35X15/LL 2M/ST/ZN

Weidmüller Interface GmbH & Co. KG

Klingenbergstraße 26

D-32758 Detmold

Germany

www.weidmueller.com

Technical data

Dimensions and weights

| | | | |
|------------|----------|-----------------|------------|
| Depth | 15 mm | Depth (inches) | 0.591 inch |
| Height | 35 mm | Height (inches) | 1.378 inch |
| Width | 2,000 mm | Width (inches) | 78.74 inch |
| Net weight | 627.27 g | | |

Mounting rail

| | | |
|---|-------------------------------------|----------|
| Drill-hole diameter | 5.2 mm | |
| Installation advice | Direct mounting | |
| Length of the terminal rail | nominal | 2,000 mm |
| | min. | 0 mm |
| | max. | 2,000 mm |
| Material | Steel | |
| Pre-punched mounting rail | Yes | |
| Short circuit strength corresponds to E-Cu wire | 50 mm ² | |
| Short-time withstand current according to IEC 60947-7-2 | 6 kA/1s | |
| Slit gap | 11 mm | |
| Slit gap | | |
| Slit length | 25 mm | |
| Slit length | | |
| Slit width | 5.2 mm | |
| Slit width | | |
| Slotted drill holes | Yes | |
| Solder eyelet hole diameter (D) | 5.2 mm | |
| Spacing of holes, centre-to-centre | 36 mm | |
| Standards | In accordance with DIN EN 60715 | |
| Surface finish | galvanic zinc plated and passivated | |
| Thickness | 1.5 mm | |

Classifications

| | | | |
|-------------|-------------|-------------|-------------|
| ETIM 6.0 | EC001285 | ETIM 7.0 | EC001285 |
| ETIM 8.0 | EC001285 | ECLASS 9.0 | 27-40-06-02 |
| ECLASS 9.1 | 27-40-06-02 | ECLASS 10.0 | 27-40-06-02 |
| ECLASS 11.0 | 27-40-06-02 | | |

Approvals

| | |
|------|---------|
| ROHS | Conform |
|------|---------|

Downloads

| | |
|--------------------|---|
| Engineering Data | CAD data – STEP |
| Engineering Data | EPLAN, WSCAD, Zuken E3.S |
| User Documentation | StorageConditionsTerminalBlocks |
| Catalogues | Catalogues in PDF-format |
| Brochures | |