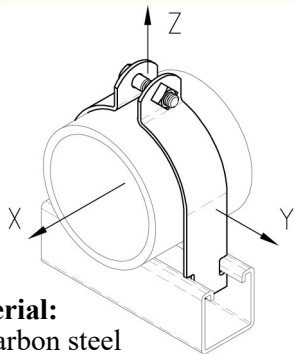




# PIPE & CONDUIT SUPPORTS

## FIG. 2001-2016

## I.P. PIPE CLAMPS



**Material:**  
Carbon steel  
(Aluminum and Type 304 or 316 Stainless Steel upon request)

**Finish:** Pre-galvanized

**Approvals:** Complies with

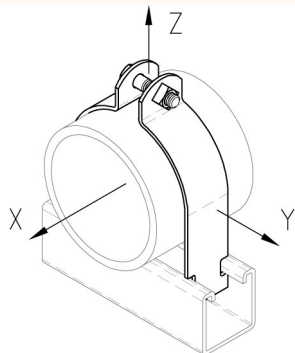
Federal Specification A-A-1192A (Type 60) and Manufacturers' Standardization Society ANSI/MSS SP-58 (Type 60) which supersedes ANSI/MSS SP-69.

**Ordering:** Specify figure number and material.

Fig. No.	Pipe Size		O.D. Size		Material Size	Max. Rec. Loads						Weight Each	
						X		Y		Z		Lbs.	kg
						Lbs.	kN	Lbs.	kN	Lbs.	kN		
2001	3/8	(10)	--	--	16 Ga.	50	(0.22)	50	(0.22)	400	(1.78)	0.10	(0.05)
2002	1/2	(15)	--	--	16 Ga.	50	(0.22)	50	(0.22)	400	(1.78)	0.10	(0.05)
2003	3/4	(20)	--	--	14 Ga.	75	(0.33)	75	(0.33)	600	(2.67)	0.14	(0.06)
2004	1	(25)	--	--	14 Ga.	75	(0.33)	75	(0.33)	600	(2.67)	0.17	(0.08)
2005	1 1/4	(32)	--	--	14 Ga.	75	(0.33)	75	(0.33)	600	(2.67)	0.21	(0.10)
2006	1 1/2	(40)	--	--	12 Ga.	125	(0.56)	125	(0.56)	800	(3.56)	0.30	(0.14)
2007	2	(50)	2 3/8	(60.33)	12 Ga.	125	(0.56)	125	(0.56)	800	(3.56)	0.35	(0.16)
2008	2 1/2	(65)	2 7/8	(73.03)	12 Ga.	125	(0.56)	125	(0.56)	800	(3.56)	0.39	(0.18)
2009	3	(80)	3 1/2	(88.90)	12 Ga.	125	(0.56)	125	(0.56)	800	(3.56)	0.46	(0.21)
2010	3 1/2	(90)	4	(101.60)	11 Ga.	150	(0.67)	200	(0.89)	1000	(4.45)	0.65	(0.29)
2011	4	(100)	4 1/2	(114.30)	11 Ga.	150	(0.67)	200	(0.89)	1000	(4.45)	0.66	(0.30)
2012	5	(125)	--	--	11 Ga.	150	(0.67)	200	(0.89)	1000	(4.45)	0.79	(0.36)
2013	6	(150)	6 5/8	(168.28)	11 Ga.	150	(0.67)	200	(0.89)	1000	(4.45)	1.00	(0.45)
2014	8	(200)	8 5/8	(219.08)	11 Ga.	200	(0.89)	250	(1.11)	1000	(4.45)	1.14	(0.52)
2015	10	(65)	10 3/4	(273.05)	11 Ga.	200	(0.89)	250	(1.11)	1000	(4.45)	1.43	(0.65)
2016	12	(80)	12 3/4	(323.85)	11 Ga.	200	(0.89)	250	(1.11)	1000	(4.45)	1.74	(0.79)

## FIG. 2101-2107

## UNIVERSAL PIPE CLAMP FOR EMT, IMC & GRC



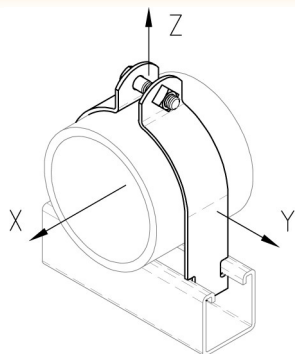
**Material:** Carbon steel  
**Finish:** Pre-galvanized  
**Ordering:** Specify figure number.

**Approvals:** Complies with Federal Specification A-A-1192A (Type 60) and Manufacturers' Standardization Society ANSI/MSS SP-58 (Type 60) which supersedes ANSI/MSS SP-69.

Fig. No.	Pipe Size		O.D. Size		Material Size	Max. Rec. Loads						Weight Each	
						X		Y		Z		Lbs.	kg
						Lbs.	kN	Lbs.	kN	Lbs.	kN		
2101	3/8	(10)	.557 to .706	(14.15 to 17.93)	16 Ga.	50	(.22)	50	(.22)	400	(1.78)	.11	(.05)
2102	1/2	(15)	.706 to .840	(17.93 to 21.34)	16 Ga.	50	(.22)	50	(.22)	400	(1.78)	.11	(.05)
2103	3/4	(20)	.922 to 1.050	(23.42 to 26.67)	14 Ga.	50	(.22)	50	(.22)	400	(1.78)	.15	(.07)
2104	1	(25)	1.163 to 1.315	(29.54 to 33.40)	14 Ga.	50	(.22)	50	(.22)	400	(1.78)	.17	(.08)
2105	1 1/4	(32)	1.510 to 1.660	(38.35 to 42.16)	14 Ga.	50	(.22)	50	(.22)	400	(1.78)	.19	(.09)
2106	1 1/2	(40)	1.740 to 1.900	(44.20 to 48.26)	12 Ga.	75	(.33)	75	(.33)	600	(2.67)	.30	(.14)
2107	2	(50)	2.197 to 2.375	(55.80 to 60.33)	12 Ga.	75	(.33)	75	(.33)	600	(2.67)	.35	(.16)

## FIG. 2201-2207

## EMT CONDUIT CLAMP



**Material:** Carbon steel  
**Finish:** Pre-galvanized  
**Ordering:** Specify figure number.

**Approvals:** Complies with Federal Specification A-A-1192A (Type 60) and Manufacturers' Standardization Society ANSI/MSS SP-58 (Type 60) which supersedes ANSI/MSS SP-69.

Fig. No.	EMT Size		Material Size	Max. Rec. Loads						Weight Each	
				X		Y		Z		Lbs.	kg
				Lbs.	kN	Lbs.	kN	Lbs.	kN		
2201	3/8	(10)	16 Ga.	50	(.22)	50	(.22)	400	(1.78)	.09	(.04)
2202	1/2	(15)	16 Ga.	50	(.22)	50	(.22)	400	(1.78)	.09	(.04)
2203	3/4	(20)	16 Ga.	50	(.22)	50	(.22)	400	(1.78)	.10	(.05)
2204	1	(25)	14 Ga.	50	(.22)	50	(.22)	600	(2.67)	.14	(.06)
2205	1 1/4	(32)	14 Ga.	50	(.22)	50	(.22)	600	(2.67)	.16	(.07)
2206	1 1/2	(40)	12 Ga.	75	(.33)	75	(.33)	800	(3.56)	.27	(.12)
2207	2	(50)	12 Ga.	75	(.33)	75	(.33)	800	(3.56)	.30	(.14)

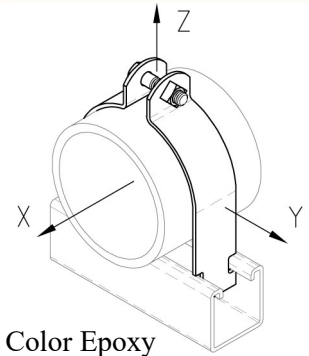
# PIPE & CONDUIT SUPPORTS



## COPPER TUBING CLAMP

### FIG. 2301-2314

Fig. No.	Pipe Size		Material Size	Max. Rec. Loads						Weight Each	
				X		Y		Z			
				Lbs.	kN	Lbs.	kN	Lbs.	kN	Lbs.	kg
2301	1/4	(6)	16 Ga.	50	(0.22)	50	(0.22)	400	(1.78)	.09	(.04)
2302	3/8	(10)	16 Ga.	50	(0.22)	50	(0.22)	400	(1.78)	.09	(.04)
2303	1/2	(15)	16 Ga.	50	(0.22)	50	(0.22)	400	(1.78)	.09	(.04)
2304	3/4	(20)	16 Ga.	50	(0.22)	50	(0.22)	400	(1.78)	.10	(.05)
2305	1	(25)	14 Ga.	75	(0.33)	75	(0.33)	600	(2.67)	.14	(.06)
2306	1 1/4	(32)	14 Ga.	75	(0.33)	75	(0.33)	600	(2.67)	.16	(.07)
2307	1 1/2	(40)	14 Ga.	75	(0.33)	75	(0.33)	600	(2.67)	.17	(.08)
2308	2	(50)	12 Ga.	125	(0.56)	125	(0.56)	800	(3.56)	.29	(.13)
2309	2 1/2	(65)	12 Ga.	125	(0.56)	125	(0.56)	800	(3.56)	.35	(.16)
2310	3	(80)	12 Ga.	125	(0.56)	125	(0.56)	800	(3.56)	.40	(.18)
2311	3 1/2	(90)	12 Ga.	150	(0.67)	200	(0.89)	1000	(4.45)	.51	(.23)
2312	4	(100)	12 Ga.	150	(0.67)	200	(0.89)	1000	(4.45)	.61	(.28)
2313	5	(125)	11 Ga.	150	(0.67)	200	(0.89)	1000	(4.45)	.74	(.34)
2314	6	(150)	11 Ga.	200	(0.89)	250	(1.11)	1000	(4.45)	.94	(.43)



**Material:**

Carbon steel

**Finish:** Copper Color Epoxy

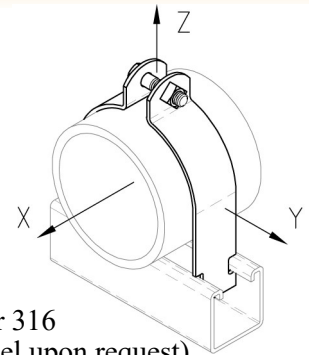
**Approvals:** Complies with Federal Specification A-A-1192A (Type 60) and Manufacturers' Standardization Society ANSI/MSS SP-58 (Type 60) which supersedes ANSI/MSS SP-69.

**Ordering:** Specify figure number.

## O.D. TUBING CLAMP

### FIG. 2401-2432

Fig. No.	O.D. Size		Material Size	Max. Rec. Loads						Weight Each	
				X		Y		Z			
				Lbs.	kN	Lbs.	kN	Lbs.	kN	Lbs.	kg
2401	1/4	(6.35)	16 Ga.	50	(0.22)	50	(0.22)	400	(1.78)	.09	(.04)
2402	3/8	(9.53)	16 Ga.	50	(0.22)	50	(0.22)	400	(1.78)	.09	(.04)
2403	1/2	(12.70)	16 Ga.	50	(0.22)	50	(0.22)	400	(1.78)	.10	(.05)
2404	5/8	(15.88)	16 Ga.	50	(0.22)	50	(0.22)	400	(1.78)	.10	(.05)
2405	3/4	(19.05)	16 Ga.	50	(0.22)	50	(0.22)	400	(1.78)	.10	(.05)
2406	7/8	(22.23)	16 Ga.	50	(0.22)	50	(0.22)	400	(1.78)	.10	(.05)
2407	1	(25.40)	14 Ga.	75	(0.33)	75	(0.33)	600	(2.67)	.13	(.06)
2408	1 1/8	(28.58)	14 Ga.	75	(0.33)	75	(0.33)	600	(2.67)	.14	(.06)
2409	1 1/4	(31.75)	14 Ga.	75	(0.33)	75	(0.33)	600	(2.67)	.14	(.06)
2410	1 3/8	(34.93)	14 Ga.	75	(0.33)	75	(0.33)	600	(2.67)	.16	(.07)
2411	1 1/2	(38.10)	14 Ga.	75	(0.33)	75	(0.33)	600	(2.67)	.16	(.07)
2412	1 5/8	(41.28)	14 Ga.	75	(0.33)	75	(0.33)	600	(2.67)	.17	(.08)
2413	1 3/4	(44.45)	12 Ga.	125	(0.56)	125	(0.56)	800	(3.56)	.27	(.12)
2414	1 7/8	(47.63)	12 Ga.	125	(0.56)	125	(0.56)	800	(3.56)	.28	(.13)
2415	2	(50.80)	12 Ga.	125	(0.56)	125	(0.56)	800	(3.56)	.28	(.13)
2416	2 1/8	(53.98)	12 Ga.	125	(0.56)	125	(0.56)	800	(3.56)	.29	(.13)
2417	2 1/4	(57.15)	12 Ga.	125	(0.56)	125	(0.56)	800	(3.56)	.32	(.15)
2418	2 1/2	(63.50)	12 Ga.	125	(0.56)	125	(0.56)	800	(3.56)	.34	(.15)
2419	2 5/8	(66.68)	12 Ga.	125	(0.56)	125	(0.56)	800	(3.56)	.35	(.16)
2420	2 3/4	(69.85)	12 Ga.	125	(0.56)	125	(0.56)	800	(3.56)	.37	(.17)
2421	3	(76.20)	12 Ga.	125	(0.56)	125	(0.56)	800	(3.56)	.39	(.18)
2422	3 1/8	(79.38)	12 Ga.	125	(0.56)	125	(0.56)	800	(3.56)	.40	(.18)
2423	3 1/4	(82.55)	12 Ga.	125	(0.56)	125	(0.56)	800	(3.56)	.42	(.19)
2424	3 3/8	(85.73)	12 Ga.	125	(0.56)	125	(0.56)	800	(3.56)	.43	(.20)
2425	3 5/8	(92.08)	11 Ga.	150	(0.67)	200	(0.89)	1000	(4.45)	.51	(.23)
2426	3 3/4	(95.25)	11 Ga.	150	(0.67)	200	(0.89)	1000	(4.45)	.53	(.24)
2427	3 7/8	(98.43)	11 Ga.	150	(0.67)	200	(0.89)	1000	(4.45)	.54	(.24)
2428	4 1/8	(104.78)	11 Ga.	150	(0.67)	200	(0.89)	1000	(4.45)	.57	(.26)
2429	4 1/4	(107.95)	11 Ga.	150	(0.67)	200	(0.89)	1000	(4.45)	.59	(.27)
2430	4 3/8	(111.13)	11 Ga.	150	(0.67)	200	(0.89)	1000	(4.45)	.60	(.27)
2431	4 5/8	(117.48)	11 Ga.	150	(0.67)	200	(0.89)	1000	(4.45)	.62	(.28)
2432	4 3/4	(120.65)	11 Ga.	150	(0.67)	200	(0.89)	1000	(4.45)	.64	(.29)



**Material:**

Carbon steel  
(Type 304 or 316  
Stainless Steel upon request)

**Finish:** Pre-galvanized

**Approvals:** Complies with Federal Specification A-A-1192A (Type 60) and Manufacturers' Standardization Society ANSI/MSS SP-58 (Type 60) which supersedes ANSI/MSS SP-69.

**Ordering:** Specify figure number and material.

Fig. Number	No-Hub Cast Iron Soil Nom. Pipe Size	
2006	1 1/2	(40)
2007	2	(50)
2424	3	(80)
2430	4	(100)
2437	5	(125)
2445	6	(150)
2460	8	(200)
2477	10	(250)
2493	12	(300)

**APPLICATION:**

For use with No-Hub Cast Iron Soil Pipe

Unless otherwise specified, all dimensions on drawings and in charts are in inches and dimensions shown in parentheses are in millimeters.

CHANNEL  
PIPE & CONDUIT SUPPORTS  
STRUT NUTS & HARDWARE  
CONCRETE INSERTS  
END CAPS & CLOSURES  
FLAT PLATE FITTINGS  
90° ANGLE FITTINGS  
ANGLE FITTINGS  
"U" FITTINGS  
"Z" FITTINGS  
WING FITTINGS  
SPECIALTY FITTINGS  
TROLLEY ASSEMBLIES  
POST BASES  
BRACKETS & BRACE FITTINGS  
BEAM CLAMPS  
ROOFTOP SUPPORTS

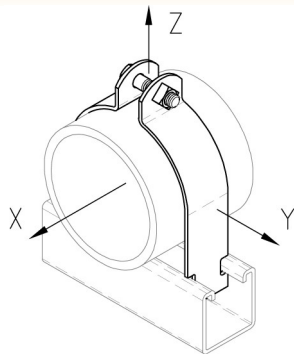


www.phd-mfg.com

# PIPE & CONDUIT SUPPORTS

**FIG. 2433-2496**

**O.D. TUBING CLAMP (CONT'D)**



**Material:** Carbon steel  
(Type 304 or 316 Stainless Steel upon request)

**Finish:** Pre-galvanized

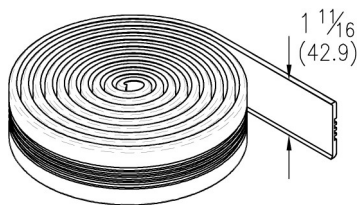
**Approvals:** Complies with Federal Specification A-A-1192A (Type 60) and Manufacturers' Standardization Society ANSI/MSS SP-58 (Type 60) which supersedes ANSI/MSS SP-69.

**Ordering:** Specify figure number and material.

Fig. No.	O.D. Size		Material Size	Max. Rec. Loads						Weight Each	
				X		Y		Z		Lbs.	kg
				Lbs.	kN	Lbs.	kN	Lbs.	kN		
2433	4 <sup>7</sup> / <sub>8</sub>	(123.83)	11 Ga.	150	(0.67)	200	(0.89)	1000	(4.45)	.65	(.29)
2434	5	(127.00)	11 Ga.	150	(0.67)	200	(0.89)	1000	(4.45)	.67	(.30)
2435	5 <sup>1</sup> / <sub>8</sub>	(130.18)	11 Ga.	150	(0.67)	200	(0.89)	1000	(4.45)	.68	(.31)
2436	5 <sup>1</sup> / <sub>4</sub>	(133.35)	11 Ga.	150	(0.67)	200	(0.89)	1000	(4.45)	.70	(.32)
2437	5 <sup>3</sup> / <sub>8</sub>	(136.53)	11 Ga.	150	(0.67)	200	(0.89)	1000	(4.45)	.71	(.32)
2438	5 <sup>1</sup> / <sub>2</sub>	(139.70)	11 Ga.	150	(0.67)	200	(0.89)	1000	(4.45)	.72	(.33)
2439	5 <sup>5</sup> / <sub>8</sub>	(142.88)	11 Ga.	150	(0.67)	200	(0.89)	1000	(4.45)	.85	(.39)
2440	5 <sup>3</sup> / <sub>4</sub>	(146.05)	11 Ga.	150	(0.67)	200	(0.89)	1000	(4.45)	.87	(.39)
2441	5 <sup>7</sup> / <sub>8</sub>	(149.23)	11 Ga.	150	(0.67)	200	(0.89)	1000	(4.45)	.88	(.40)
2442	6	(152.40)	11 Ga.	150	(0.67)	200	(0.89)	1000	(4.45)	.90	(.41)
2443	6 <sup>1</sup> / <sub>8</sub>	(155.58)	11 Ga.	200	(0.89)	250	(1.11)	1000	(4.45)	.93	(.42)
2444	6 <sup>1</sup> / <sub>4</sub>	(158.75)	11 Ga.	200	(0.89)	250	(1.11)	1000	(4.45)	.94	(.43)
2445	6 <sup>3</sup> / <sub>8</sub>	(161.93)	11 Ga.	200	(0.89)	250	(1.11)	1000	(4.45)	.95	(.43)
2446	6 <sup>1</sup> / <sub>2</sub>	(165.10)	11 Ga.	200	(0.89)	250	(1.11)	1000	(4.45)	.98	(.44)
2447	6 <sup>3</sup> / <sub>4</sub>	(171.45)	11 Ga.	200	(0.89)	250	(1.11)	1000	(4.45)	.99	(.45)
2448	6 <sup>7</sup> / <sub>8</sub>	(174.63)	11 Ga.	200	(0.89)	250	(1.11)	1000	(4.45)	1.00	(.45)
2449	7	(177.80)	11 Ga.	200	(0.89)	250	(1.11)	1000	(4.45)	1.01	(.46)
2450	7 <sup>1</sup> / <sub>8</sub>	(180.98)	11 Ga.	200	(0.89)	250	(1.11)	1000	(4.45)	1.02	(.46)
2451	7 <sup>1</sup> / <sub>4</sub>	(184.15)	11 Ga.	200	(0.89)	250	(1.11)	1000	(4.45)	1.04	(.47)
2452	7 <sup>3</sup> / <sub>8</sub>	(187.33)	11 Ga.	200	(0.89)	250	(1.11)	1000	(4.45)	1.07	(.49)
2453	7 <sup>1</sup> / <sub>2</sub>	(190.50)	11 Ga.	200	(0.89)	250	(1.11)	1000	(4.45)	1.09	(.49)
2454	7 <sup>5</sup> / <sub>8</sub>	(193.68)	11 Ga.	200	(0.89)	250	(1.11)	1000	(4.45)	1.10	(.50)
2455	7 <sup>3</sup> / <sub>4</sub>	(196.85)	11 Ga.	200	(0.89)	250	(1.11)	1000	(4.45)	1.12	(.51)
2456	7 <sup>7</sup> / <sub>8</sub>	(200.03)	11 Ga.	200	(0.89)	250	(1.11)	1000	(4.45)	1.13	(.51)
2457	8	(203.20)	11 Ga.	200	(0.89)	250	(1.11)	1000	(4.45)	1.15	(.52)
2458	8 <sup>1</sup> / <sub>8</sub>	(206.38)	11 Ga.	200	(0.89)	250	(1.11)	1000	(4.45)	1.17	(.53)
2459	8 <sup>1</sup> / <sub>4</sub>	(209.55)	11 Ga.	200	(0.89)	250	(1.11)	1000	(4.45)	1.18	(.54)
2460	8 <sup>3</sup> / <sub>8</sub>	(212.73)	11 Ga.	200	(0.89)	250	(1.11)	1000	(4.45)	1.20	(.54)
2461	8 <sup>1</sup> / <sub>2</sub>	(215.90)	11 Ga.	200	(0.89)	250	(1.11)	1000	(4.45)	1.21	(.55)
2463	8 <sup>3</sup> / <sub>4</sub>	(222.25)	11 Ga.	200	(0.89)	250	(1.11)	1000	(4.45)	1.28	(.58)
2465	9	(228.60)	11 Ga.	200	(0.89)	250	(1.11)	1000	(4.45)	1.32	(.60)
2466	9 <sup>1</sup> / <sub>8</sub>	(231.78)	11 Ga.	200	(0.89)	250	(1.11)	1000	(4.45)	1.32	(.60)
2469	9 <sup>5</sup> / <sub>8</sub>	(244.48)	11 Ga.	200	(0.89)	250	(1.11)	1000	(4.45)	1.34	(.61)
2470	9 <sup>3</sup> / <sub>4</sub>	(247.65)	11 Ga.	200	(0.89)	250	(1.11)	1000	(4.45)	1.39	(.63)
2475	10 <sup>1</sup> / <sub>4</sub>	(260.35)	11 Ga.	200	(0.89)	250	(1.11)	1000	(4.45)	1.43	(.65)
2477	10 <sup>1</sup> / <sub>2</sub>	(266.70)	11 Ga.	200	(0.89)	250	(1.11)	1000	(4.45)	1.43	(.65)
2487	11 <sup>3</sup> / <sub>4</sub>	(298.45)	11 Ga.	200	(0.89)	250	(1.11)	1000	(4.45)	1.50	(.68)
2488	11 <sup>7</sup> / <sub>8</sub>	(301.63)	11 Ga.	200	(0.89)	250	(1.11)	1000	(4.45)	1.55	(.70)
2493	12 <sup>1</sup> / <sub>2</sub>	(317.50)	11 Ga.	200	(0.89)	250	(1.11)	1000	(4.45)	1.74	(.79)
2496	12 <sup>7</sup> / <sub>8</sub>	(327.03)	11 Ga.	200	(0.89)	250	(1.11)	1000	(4.45)	1.65	(.75)

**FIG. 2600**

**CUSHION MATERIAL**



**Material:** EPDM Rubber

**Stock Thickness:** 1<sup>1</sup>/<sub>8</sub>" (3.18)

**Stock Length:** 25 ft. (7.62m)/box

**Service Temperature:** -70° – 350° F (-57° – 177° C)

**Weight:** 0.102 lbs/ft. (0.15 kg./m)

**Ordering:** Specify figure number and number of feet.

# PIPE & CONDUIT SUPPORTS



## CLAMP WITH CUSHION

## FIG. 2501-2588

**Clamp Material:** Carbon steel (Type 304 or 316 Stainless Steel upon request)

**Cushion Material:** Multi-Flex TES A9110 EV1 Black, in accordance with ASTM D4474 TES 0130 A90000. Classified 2043 ( 25/50 ) for use in plenums and air handling systems.

**Temperature Range:** -65°F to 275°F (-54°C to 135°C)

**Finish:** Western gold

**Approvals:** Complies with Federal Specification A-A-1192A (Type 61) and Manufacturers' Standardization Society ANSI/MSS SP-58 (Type 61) which supersedes ANSI/MSS SP-69.

**Ordering:** Specify figure number.

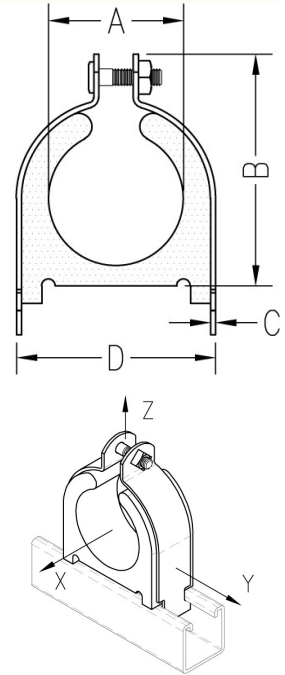


Fig. No.	O.D. Size A		Nom. Tube Size		Nom. Pipe Size		B		C		D		Max. Rec. Load						Wt. Each	
													X		Y		Z			
													Lbs.	kN	Lbs.	kN	Lbs.	kN		
2501	.25	(6.35)	1/8	(3)	-	-	1.11	(28.19)	.075	(1.91)	.62	(15.75)	50	(22)	50	(22)	400	(1.78)	.13	(.06)
2502	.375	(9.53)	1/4	(6)	-	-	1.24	(31.50)	.075	(1.91)	.75	(19.05)	50	(22)	50	(22)	400	(1.78)	.14	(.06)
2503	.5	(12.70)	3/8	(10)	-	-	1.36	(34.54)	.075	(1.91)	.87	(22.10)	50	(22)	50	(22)	400	(1.78)	.15	(.07)
2504	.625	(15.88)	1/2	(15)	-	-	1.5	(38.10)	.075	(1.91)	1	(25.40)	50	(22)	50	(22)	400	(1.78)	.16	(.07)
2505	.75	(19.05)	5/8	(17)	-	-	1.78	(45.21)	.075	(1.91)	1.33	(33.78)	75	(33)	75	(33)	600	(2.67)	.19	(.09)
2506	.875	(22.23)	3/4	(20)	-	-	1.91	(48.51)	.075	(1.91)	1.45	(36.83)	75	(33)	75	(33)	600	(2.67)	.21	(.09)
2515	1	(25.40)	-	-	-	-	2.03	(51.56)	.075	(1.91)	1.66	(42.16)	75	(33)	75	(33)	600	(2.67)	.29	(.13)
2507	1.125	(28.58)	1	(25)	-	-	2.16	(54.86)	.075	(1.91)	1.79	(45.47)	75	(33)	75	(33)	600	(2.67)	.31	(.14)
2516	1.25	(31.75)	-	-	-	-	2.3	(58.42)	.105	(2.67)	1.92	(48.77)	75	(33)	75	(33)	600	(2.67)	.33	(.15)
2508	1.375	(34.93)	1 1/4	(32)	-	-	2.75	(69.85)	.119	(3.02)	2.22	(56.39)	75	(33)	75	(33)	600	(2.67)	.42	(.19)
2517	1.5	(38.10)	-	-	-	-	2.75	(69.85)	.119	(3.02)	2.22	(56.39)	75	(33)	75	(33)	600	(2.67)	.38	(.17)
2509	1.625	(41.28)	1 1/2	(40)	-	-	3.03	(76.96)	.119	(3.02)	2.47	(62.74)	75	(33)	75	(33)	600	(2.67)	.48	(.22)
2518	1.75	(44.45)	-	-	-	-	3.03	(76.96)	.119	(3.02)	2.47	(62.74)	125	(56)	125	(56)	800	(3.56)	.46	(.21)
2519	1.875	(47.63)	-	-	-	-	3.28	(83.31)	.119	(3.02)	2.47	(62.74)	125	(56)	125	(56)	800	(3.56)	.52	(.24)
2520	2	(50.80)	-	-	-	-	3.28	(83.31)	.119	(3.02)	2.72	(69.09)	125	(56)	125	(56)	800	(3.56)	.50	(.23)
2510	2.125	(53.98)	2	(50)	-	-	3.53	(89.66)	.119	(3.02)	2.97	(75.44)	125	(56)	125	(56)	800	(3.56)	.57	(.26)
2521	2.25	(57.15)	-	-	-	-	3.78	(96.01)	.119	(3.02)	3.22	(81.79)	125	(56)	125	(56)	800	(3.56)	.62	(.28)
2523	2.5	(63.50)	-	-	-	-	4.03	(102.36)	.119	(3.02)	3.47	(88.14)	125	(56)	125	(56)	800	(3.56)	.60	(.27)
2511	2.625	(66.68)	2 1/2	(65)	-	-	4.03	(102.36)	.119	(3.02)	3.47	(88.14)	125	(56)	125	(56)	800	(3.56)	.58	(.26)
2524	3	(76.20)	-	-	-	-	4.52	(114.81)	.119	(3.02)	3.97	(100.84)	125	(56)	125	(56)	800	(3.56)	.69	(.31)
2512	3.125	(79.38)	3	(80)	-	-	4.52	(114.81)	.119	(3.02)	3.97	(100.84)	125	(56)	125	(56)	800	(3.56)	.68	(.31)
2513	3.625	(92.08)	3 1/2	(90)	-	-	5.03	(127.76)	.119	(3.02)	4.47	(113.54)	150	(67)	200	(89)	1000	(4.45)	.76	(.34)
2514	4.125	(104.78)	4	(100)	-	-	5.66	(143.76)	.119	(3.02)	5.09	(129.29)	150	(67)	200	(89)	1000	(4.45)	.88	(.40)
2525	5.125	(130.18)	5	(125)	-	-	6.75	(171.45)	.119	(3.02)	6.25	(158.75)	150	(67)	200	(89)	1000	(4.45)	1.17	(.53)
2527	6	(152.4)	-	-	-	-	7.75	(196.85)	.119	(3.02)	7.5	(190.50)	150	(67)	200	(89)	1000	(4.45)	1.28	(.58)
2526	6.125	(155.58)	6	(150)	-	-	7.75	(196.85)	.119	(3.02)	7.5	(190.50)	150	(67)	200	(89)	1000	(4.45)	1.28	(.58)
2530	.79	(20)	Metric Pipe		1.78	(45.21)	.07	(1.78)	1.33	(33.78)	75	(33)	75	(33)	600	(2.67)	.19	(.09)		
2531	.98	(25)	Metric Pipe		2.03	(51.56)	.07	(1.78)	1.66	(42.16)	75	(33)	75	(33)	600	(2.67)	.29	(.13)		
2532	1.26	(32)	Metric Pipe		2.30	(58.42)	.07	(1.78)	1.92	(48.77)	75	(33)	75	(33)	600	(2.67)	.33	(.15)		
2533	1.57	(40)	Metric Pipe		2.75	(69.85)	.11	(2.79)	2.22	(56.39)	75	(33)	75	(33)	600	(2.67)	.48	(.22)		
2534	1.97	(50)	Metric Pipe		3.28	(83.31)	.11	(2.79)	2.72	(69.09)	125	(56)	125	(56)	800	(3.56)	.50	(.23)		
2535	2.48	(63)	Metric Pipe		4.03	(102.36)	.11	(2.79)	3.47	(88.14)	125	(56)	125	(56)	800	(3.56)	.60	(.27)		
2536	2.95	(75)	Metric Pipe		4.52	(114.81)	.11	(2.79)	3.97	(100.84)	125	(56)	125	(56)	800	(3.56)	.62	(.28)		
2537	3.54	(90)	Metric Pipe		4.91	(124.71)	.11	(2.79)	4.36	(110.74)	150	(67)	200	(89)	1000	(4.45)	.72	(.33)		
2538	4.33	(110)	Metric Pipe		5.76	(146.30)	.11	(2.79)	5.30	(134.62)	150	(67)	200	(89)	1000	(4.45)	.94	(.43)		
2539	4.92	(125)	Metric Pipe		6.55	(166.37)	.11	(2.79)	6.15	(156.21)	150	(67)	200	(89)	1000	(4.45)	1.06	(.48)		
2540	6.30	(160)	Metric Pipe		7.95	(201.93)	.11	(2.79)	7.70	(195.58)	150	(67)	200	(89)	1000	(4.45)	1.43	(.65)		
2574	.540	(13.72)	-	-	1/4	(5)	1.41	(35.81)	.075	(1.91)	.91	(23.11)	50	(22)	50	(22)	400	(1.78)	.16	(.07)
2575	.675	(17.15)	-	-	3/8	(10)	1.59	(40.39)	.075	(1.91)	1.07	(27.18)	75	(33)	75	(33)	600	(2.67)	.17	(.08)
2576	.840	(21.34)	-	-	1/2	(15)	1.91	(48.51)	.075	(1.91)	1.45	(36.83)	75	(33)	75	(33)	600	(2.67)	.21	(.10)
2577	1.050	(26.67)	-	-	3/4	(20)	2.16	(54.86)	.075	(1.91)	1.79	(45.47)	75	(33)	75	(33)	600	(2.67)	.31	(.14)
2578	1.315	(33.40)	-	-	1	(25)	2.75	(69.85)	.119	(3.02)	2.22	(56.39)	75	(33)	75	(33)	600	(2.67)	.43	(.20)
2579	1.660	(42.16)	-	-	1 1/4	(32)	3.03	(76.96)	.119	(3.02)	2.47	(62.74)	125	(56)	125	(56)	800	(3.56)	.48	(.22)
2580	1.900	(48.26)	-	-	1 1/2	(40)	3.28	(83.31)	.119	(3.02)	2.47	(62.74)	125	(56)	125	(56)	800	(3.56)	.52	(.24)
2581	2.375	(60.33)	-	-	2	(50)	3.78	(96.01)	.119	(3.02)	3.22	(81.79)	125	(56)	125	(56)	800	(3.56)	.61	(.28)
2582	2.875	(73.03)	-	-	2 1/2	(65)	4.27	(108.46)	.119	(3.02)	3.72	(94.49)	125	(56)	125	(56)	800	(3.56)	.62	(.28)
2583	3.500	(88.90)	-	-	3	(80)	4.91	(124.71)	.119	(3.02)	4.36	(110.74)	150	(67)	200	(89)	1000	(4.45)	.72	(.33)
2584	4.000	(101.60)	-	-	3 1/2	(90)	5.53	(140.46)	.119	(3.02)	4.97	(126.24)	150	(67)	200	(89)	1000	(4.45)	.88	(.40)
2585	4.500	(114.30)	-	-	4	(100)	6.03	(153.16)	.119	(3.02)	5.47	(138.94)	150	(67)	200	(89)	1000	(4.45)	.95	(.43)
2586	5.563	(141.30)	-	-	5	(125)	7.03	(178.56)	.135	(3.43)	6.47	(164.34)	150	(67)	200	(89)	1000	(4.45)	1.22	(.55)
2587	6.625	(168.28)	-	-	6	(150)	8.03	(203.96)	.135	(3.43)	7.47	(189.74)	150	(67)	200	(89)	1000	(4.45)	1.44	(.65)
2588	8.625	(219.08)	-	-	8	(200)	10.3	(261.62)	.135	(3.43)	9.38	(238.25)	150	(67)	200	(89)	1000	(4.45)	2.00	(.90)

Unless otherwise specified, all dimensions on drawings and in charts are in inches and dimensions shown in parentheses are in millimeters.

CHANNEL  
PIPE & CONDUIT SUPPORTS  
STRUT NUTS & HARDWARE  
CONCRETE INSERTS  
END CAPS & CLOSURES  
FLAT PLATE FITTINGS  
90° ANGLE FITTINGS  
ANGLE FITTINGS  
"U" FITTINGS  
"Z" FITTINGS  
WING FITTINGS  
SPECIALTY FITTINGS  
TROLLEY ASSEMBLIES  
POST BASES  
BRACKETS & BRACE FITTINGS  
BEAM CLAMPS  
ROOFTOP SUPPORTS





# PIPE & CONDUIT SUPPORTS

## FIG. 2701-2712

## 1-PIECE EMT/GRC STRAP

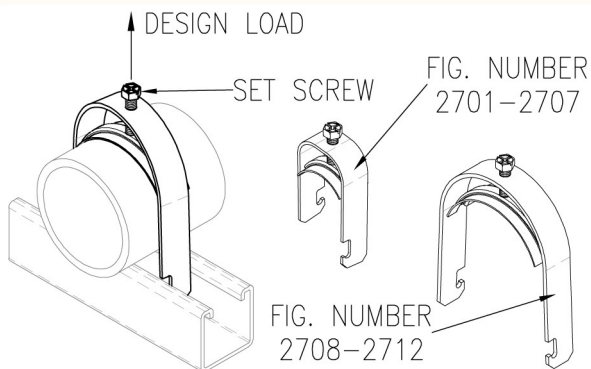
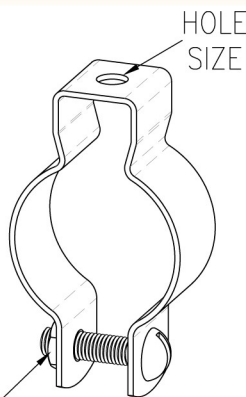


Fig. No.	EMT Size		Rigid Conduit Size		Material Size	Max. Rec. Loads		Weight Each	
	in.	mm	in.	mm		Lbs.	kN	Lbs.	kg
2701	3/8	(10)	-	-	16 Ga.	200	(0.89)	.07	(.03)
2702	1/2	(15)	3/8	(10)	16 Ga.	200	(0.89)	.07	(.03)
2703	3/4	(20)	1/2	(15)	16 Ga.	200	(0.89)	.08	(.04)
2704	1	(25)	3/4	(20)	14 Ga.	300	(1.33)	.11	(.05)
2705	1 1/4	(32)	1	(25)	14 Ga.	300	(1.33)	.13	(.06)
2706	1 1/2	(40)	1 1/4	(32)	12 Ga.	400	(1.78)	.21	(.09)
2707	2	(50)	1 1/2	(40)	12 Ga.	400	(1.78)	.22	(.10)
2708	-	-	2	(50)	12 Ga.	400	(1.78)	.23	(.10)
2709	2 1/2	(65)	2 1/2	(65)	12 Ga.	400	(1.78)	.26	(.12)
2710	3	(80)	3	(80)	12 Ga.	400	(1.78)	.30	(.14)
2711	3 1/2	(90)	3 1/2	(90)	12 Ga.	400	(1.78)	.33	(.15)
2712	4	(100)	4	(100)	12 Ga.	400	(1.78)	.37	(.17)

**Material:** Carbon steel  
**Finish:** Electro-galvanized  
**Ordering:** Specify figure number.

## FIG. 2801-2811

## CONDUIT HANGER



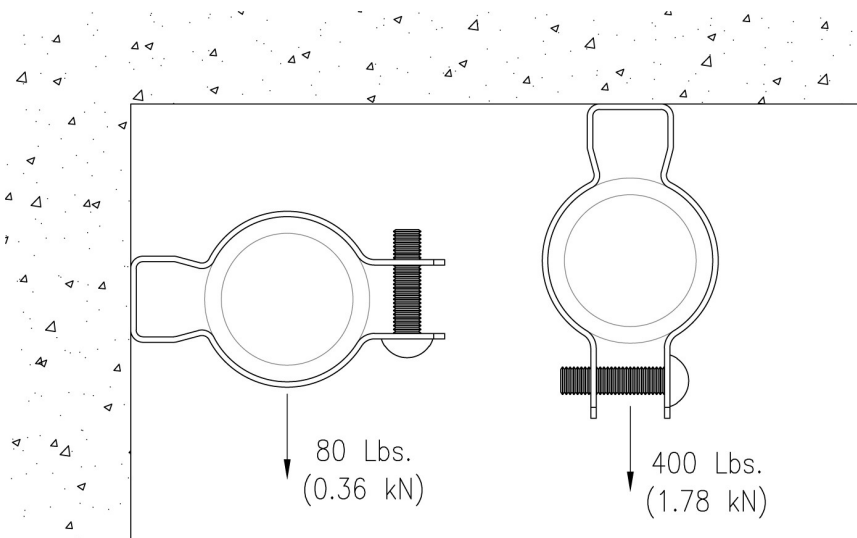
**Material:** Cold Roll, ASTM A684 Grade 1055 Spring Steel. (Type 304 or 316 Stainless Steel upon request)

**Finish:** Pre-galvanized with electro-galvanized hardware.

**Ordering:** Specify figure number.

Fig. No.	Trade Size	EMT Conduit Size		Rigid Conduit Size		Hole Size	Weight Each	
		in.	mm	in.	mm		lbs.	kg
2801	0	1/2	(15)	3/8 - 1/2	(10 - 15)	1/4	.06	(.03)
2802	1	3/4	(20)	3/4	(20)	1/4	.07	(.03)
2803	2	1	(25)	1	(25)	1/4	.09	(.04)
2804	2.5	1 1/4	(32)	-	-	1/4	.10	(.04)
2805	3	1 1/2	(40)	1 1/4	(32)	1/4	.11	(.05)
2806	4	-	-	1 1/2	(40)	5/16	.14	(.07)
2807	5	2	(50)	2	(50)	5/16	.17	(.08)
2808	6	2 1/2	(65)	2 1/2	(65)	5/16	.28	(.13)
2809	7	3	(80)	3	(80)	5/16	.28	(.12)
2810	8	3 1/2	(90)	3 1/2	(90)	5/16	.34	(.15)
2811	9	4	(100)	4	(100)	5/16	.38	(.17)

THREAD FORM ON FIG. 2801-2807.  
(NO NUT REQUIRED)



Unless otherwise specified, all dimensions on drawings and in charts are in inches and dimensions shown in parentheses are in millimeters.

# PIPE & CONDUIT SUPPORTS



CHANNEL  
PIPE & CONDUIT SUPPORTS  
STRUT NUTS & HARDWARE  
CONCRETE INSERTS  
END CAPS & CLOSURES  
FLAT PLATE FITTINGS  
90° ANGLE FITTINGS  
ANGLE FITTINGS  
"U" FITTINGS  
"Z" FITTINGS  
WING FITTINGS  
SPECIALTY FITTINGS  
TROLLEY ASSEMBLIES  
POST BASES  
BRACKETS & BRACE FITTINGS  
BEAM CLAMPS  
ROOFTOP SUPPORTS

## FIG. 7231-7238

1-HOLE CLAMP FOR O.D. TUBING

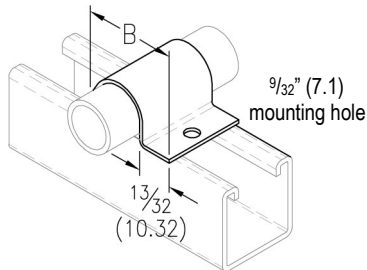


Fig. No.	Tubing O.D.	B	Wt. Each	
			lbs.	kg
7231	1/4 (6.35)	1 1/16 (26.99)	.03	(.01)
7232	5/16 (7.94)	1 1/8 (28.58)	.03	(.01)
7233	3/8 (9.53)	1 1/8 (28.58)	.04	(.02)
7234	1/2 (12.70)	1 3/16 (30.16)	.04	(.02)
7235	5/8 (15.88)	1 1/4 (31.75)	.05	(.02)
7236	3/4 (19.05)	1 5/16 (33.34)	.06	(.03)
7237	7/8 (22.23)	1 3/8 (34.93)	.06	(.03)
7238	1 (25.40)	1 7/16 (36.51)	.07	(.03)

14 Ga. Material Thickness

## FIG. 7251-7265

STANDARD PIPE STRAP

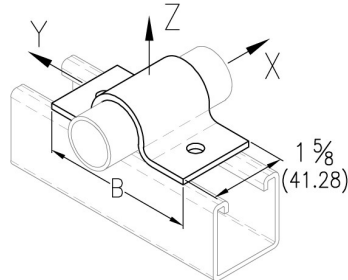
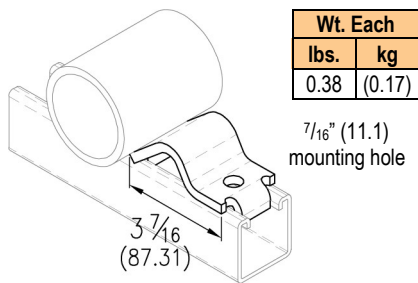


Fig. No.	Pipe Size	B	Hole Size	Material Size	Max. Rec. Load						Wt. Each	
					X		Y		Z		lbs.	kg
7251	1/2 (15)	2 7/8 (73.03)	5/16 (7.94)	1/8 (3.18)	105 (0.47)	150 (0.67)	600 (2.67)	.29	(.13)			
7252	3/4 (20)	3 1/16 (77.79)	5/16 (7.94)	1/8 (3.18)	105 (0.47)	150 (0.67)	600 (2.67)	.32	(.15)			
7253	1 (25)	3 1/2 (88.90)	5/16 (7.94)	1/8 (3.18)	120 (0.53)	150 (0.67)	600 (2.67)	.35	(.16)			
7254	1 1/4 (32)	3 13/16 (96.84)	5/16 (7.94)	1/8 (3.18)	120 (0.53)	150 (0.67)	600 (2.67)	.41	(.19)			
7255	1 1/2 (40)	3 15/16 (100.01)	5/16 (7.94)	1/8 (3.18)	120 (0.53)	150 (0.67)	600 (2.67)	.45	(.20)			
7256	2 (50)	5 1/16 (128.59)	7/16 (11.11)	1/4 (6.35)	180 (0.80)	480 (2.14)	1200 (5.34)	1.00	(.45)			
7257	2 1/2 (65)	6 3/16 (157.16)	7/16 (11.11)	1/4 (6.35)	180 (0.80)	480 (2.14)	1200 (5.34)	1.13	(.51)			
7258	3 (80)	6 11/16 (169.86)	7/16 (11.11)	1/4 (6.35)	300 (1.33)	480 (2.14)	1200 (5.34)	1.32	(.60)			
7259	3 1/2 (90)	7 5/16 (185.74)	7/16 (11.11)	1/4 (6.35)	300 (1.33)	480 (2.14)	1200 (5.34)	1.51	(.68)			
7260	4 (100)	8 (203.20)	7/16 (11.11)	1/4 (6.35)	450 (2.00)	600 (2.67)	1500 (6.67)	1.66	(.75)			
7261	5 (125)	9 (228.60)	7/16 (11.11)	1/4 (6.35)	450 (2.00)	600 (2.67)	1500 (6.67)	1.91	(.87)			
7262	6 (150)	10 1/8 (257.18)	7/16 (11.11)	1/4 (6.35)	450 (2.00)	600 (2.67)	1500 (6.67)	2.23	(1.01)			
7263	8 (200)	12 (304.80)	7/16 (11.11)	1/4 (6.35)	600 (2.67)	800 (3.56)	2000 (8.90)	2.97	(1.35)			
7264	10 (250)	14 (355.60)	9/16 (14.29)	1/4 (6.35)	600 (2.67)	800 (3.56)	2000 (8.90)	3.67	(1.66)			
7265	12 (300)	16 (406.40)	9/16 (14.29)	1/4 (6.35)	600 (2.67)	800 (3.56)	2000 (8.90)	4.30	(1.95)			

## FIG. 7370

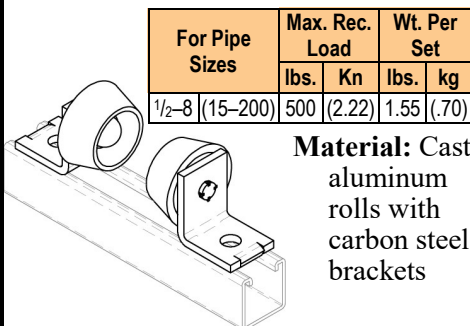
PIPE STOP



Wt. Each	
lbs.	kg
0.38	(0.17)

## FIG. 7400

SEPARATE ROLLERS



**Material:** Cast aluminum rolls with carbon steel brackets

## FIG. 7501-7506

PIPE ROLLER WITH AXLE

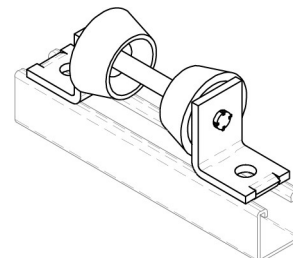
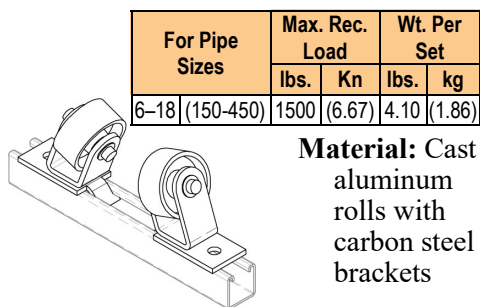


Fig. No.	For Pipe Sizes	Max. Rec. Load		Wt. Each	
		lbs.	Kn	lbs.	kg
7501	1-3 (25-80)	750	(3.34)	1.59	(.72)
7502	3-4 (80-100)	750	(3.34)	1.66	(.75)
7503	4-6 (100-150)	750	(3.34)	1.79	(.81)
7504	6-8 (150-200)	750	(3.34)	1.82	(.83)
7505	10 (250)	750	(3.34)	1.90	(.86)
7506	12 (300)	750	(3.34)	1.93	(.88)

**Material:** Cast aluminum rolls with carbon steel brackets

## FIG. 7530

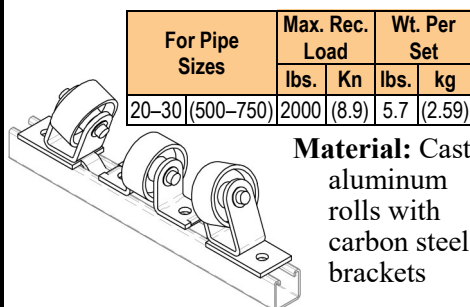
60° SEPARATE ROLLERS



**Material:** Cast aluminum rolls with carbon steel brackets

## FIG. 7560

60° ROLLERS WITH CENTER ROLLER



**Material:** Cast aluminum rolls with carbon steel brackets

Standard Product Information for 1 5/8" (41.3) width series channel fittings (Unless Otherwise Noted)

Hole Diameter: 9/16" (14.3); Hole Spacing-From End: 1 3/16" (20.6); Hole Spacing-On Center: 1 7/8" (47.6); Width: 1 5/8" (41.3); Thickness: 1/4" (6.4)  
 Material: Carbon steel (Type 304 or 316 Stainless Steel upon request); Finish: Electro-galvanized (hot-dip galvanized, e-coat, and powder coated upon request)  
 Ordering: Specify figure number, material, and finish.

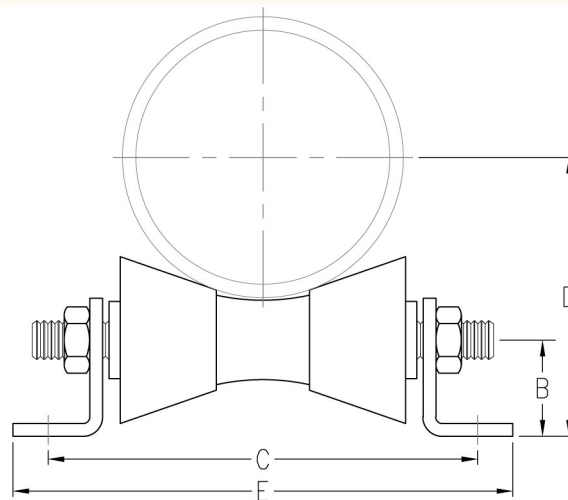
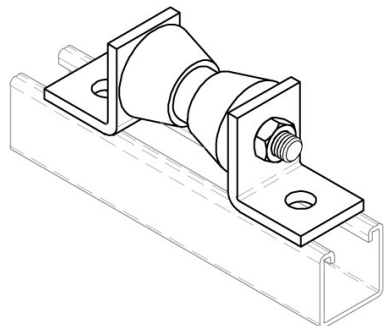
Unless otherwise specified, all dimensions on drawings and in charts are in inches and dimensions shown in parentheses are in millimeters.



# PIPE & CONDUIT SUPPORTS

**FIG. 7581-7585**

**ROLLER SUPPORT**



**Material:** Cast iron roll with carbon steel brackets  
**Finish:** Electro-galvanized  
**Ordering:** Specify figure number.

Fig. No.	Pipe Size		B		C		D		E		Hole Size		Material Size		Max. Rec. Load		Wt. Each	
															lbs.	kN	lbs.	kg
7581	2	(50)	1 1/4	(31.75)	5 1/8	(130.18)	3 1/8	(79.38)	6 5/8	(168.28)	9/16	(14.29)	1/4 X 1 5/8	(6.35 X 41.28)	390	(1.73)	1.77	(.80)
7581	2 1/2	(65)	1 1/4	(31.75)	5 1/8	(130.18)	3 5/16	(84.14)	6 5/8	(168.28)	9/16	(14.29)	1/4 X 1 5/8	(6.35 X 41.28)	390	(1.73)	1.77	(.80)
7581	3	(80)	1 1/4	(31.75)	5 1/8	(130.18)	3 5/8	(92.08)	6 5/8	(168.28)	9/16	(14.29)	1/4 X 1 5/8	(6.35 X 41.28)	390	(1.73)	1.77	(.80)
7581	3 1/2	(90)	1 1/4	(31.75)	5 1/8	(130.18)	4	(101.60)	6 5/8	(168.28)	9/16	(14.29)	1/4 X 1 5/8	(6.35 X 41.28)	390	(1.73)	1.77	(.80)
7582	4	(100)	1 1/4	(31.75)	6 1/8	(155.58)	4 1/16	(103.19)	7 5/8	(193.68)	9/16	(14.29)	1/4 X 1 5/8	(6.35 X 41.28)	600	(2.67)	2.31	(1.05)
7582	5	(125)	1 1/4	(31.75)	6 1/8	(155.58)	4 9/16	(115.89)	7 5/8	(193.68)	9/16	(14.29)	1/4 X 1 5/8	(6.35 X 41.28)	600	(2.67)	2.31	(1.05)
7582	6	(150)	1 1/4	(31.75)	6 1/8	(155.58)	5 1/16	(128.59)	7 5/8	(193.68)	9/16	(14.29)	1/4 X 1 5/8	(6.35 X 41.28)	600	(2.67)	2.31	(1.05)
7583	8	(200)	1 7/8	(47.63)	8 1/4	(209.55)	7 5/16	(185.74)	9 3/4	(247.65)	9/16	(14.29)	1/4 X 1 5/8	(6.35 X 41.28)	800	(3.56)	5.42	(2.46)
7583	10	(250)	1 7/8	(47.63)	8 1/4	(209.55)	8 5/8	(219.08)	9 3/4	(247.65)	9/16	(14.29)	1/4 X 1 5/8	(6.35 X 41.28)	800	(3.56)	5.42	(2.46)
7584	12	(300)	2 7/16	(61.91)	12 3/4	(323.85)	9 3/4	(247.65)	14 3/4	(374.65)	13/16	(20.64)	3/8 X 2	(9.53 X 50.8)	1300	(5.78)	10.40	(4.72)
7584	14	(350)	2 7/16	(61.91)	12 3/4	(323.85)	10 1/2	(266.70)	14 3/4	(374.65)	13/16	(20.64)	3/8 X 2	(9.53 X 50.8)	1300	(5.78)	10.40	(4.72)
7585	16	(400)	2 15/16	(74.61)	14 1/4	(361.95)	12	(304.80)	16 1/4	(412.75)	13/16	(20.64)	3/8 X 2 1/2	(9.53 X 63.5)	2300	(10.23)	15.08	(6.84)
7585	18	(450)	2 15/16	(74.61)	14 1/4	(361.95)	13 1/8	(333.38)	16 1/4	(412.75)	13/16	(20.64)	3/8 X 2 1/2	(9.53 X 63.5)	2300	(10.23)	15.08	(6.84)
7585	20	(500)	2 15/16	(74.61)	14 1/4	(361.95)	14 3/8	(365.13)	16 1/4	(412.75)	13/16	(20.64)	3/8 X 2 1/2	(9.53 X 63.5)	2300	(10.23)	15.08	(6.84)

Unless otherwise specified, all dimensions on drawings and in charts are in inches and dimensions shown in parentheses are in millimeters.