

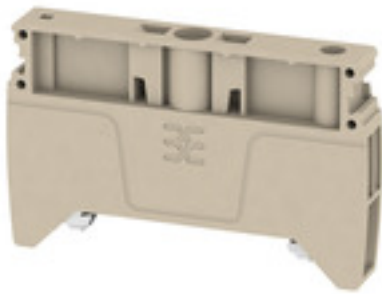
**AEB 35 SC/1****Weidmüller Interface GmbH & Co. KG**

Klingenbergstraße 26

D-32758 Detmold

Germany

www.weidmueller.com

**Product image**

Weidmüller's range of products includes end brackets that guarantee a permanent, reliable mounting on the terminal rail and prevent sliding. Versions with and without screws are available. The end brackets include marking options, also for group markers, and also a test plug holder.

**General ordering data**

Version	A-series, End bracket
Order No.	<a href="#">1991920000</a>
Type	AEB 35 SC/1
GTIN (EAN)	4050118376722
Qty.	50 pc(s).

## AEB 35 SC/1

Weidmüller Interface GmbH &amp; Co. KG

Klingenbergstraße 26

D-32758 Detmold

Germany

www.weidmueller.com

## Technical data

## Dimensions and weights

Depth	36 mm	Depth (inches)	1.417 inch
Height	58 mm	Height (inches)	2.283 inch
Width	8 mm	Width (inches)	0.315 inch
Net weight	13.32 g		

## Temperatures

Storage temperature	-25 °C...55 °C	Continuous operating temp., min.	-60 °C
Continuous operating temp., max.	130 °C		

## Material data

Material	WEMID GF 30	Colour	dark beige
UL 94 flammability rating	V-0		

## System specifications

Version	For the terminals	Rail	TS 35
---------	-------------------	------	-------

## Additional technical data

Installation advice	Rail	Interlock	for screw fixing
Open sides	closed	Snap-on	No
Type of mounting	when screwed in	With snap-in pegs	No

## Conductors for clamping (rated connection)

Tightening torque, max.	1 Nm	Tightening torque, min.	0.5 Nm
-------------------------	------	-------------------------	--------

## General

Installation advice	Rail	Rail	TS 35
---------------------	------	------	-------

## Classifications

ETIM 6.0	EC001041	ETIM 7.0	EC001041
ETIM 8.0	EC001041	ECLASS 9.0	27-14-11-35
ECLASS 9.1	27-14-11-35	ECLASS 10.0	27-14-11-35
ECLASS 11.0	27-14-11-35		

## Approvals

ROHS	Conform
------	---------

## Downloads

Engineering Data	<a href="#">CAD data – STEP</a>
Engineering Data	<a href="#">EPLAN, WSCAD, Zuken E3.S</a>
Tender specification	<a href="#">Klippon® Connect 1991920000 EN</a> <a href="#">Klippon® Connect 1991920000 DE</a>
User Documentation	<a href="#">StorageConditionsTerminalBlocks</a>
Catalogues	<a href="#">Catalogues in PDF-format</a>
Brochures	

Creation date December 30, 2021 3:42:57 PM CET

Catalogue status 17.12.2021 / We reserve the right to make technical changes.