

## Conduit Bodies and Fittings (for use with Schedule 40 and 80 Conduit)

### Special Long-Line Sleeve Couplings

Sleeve Coupling  
(For Repair Work)  
No Internal Stop



| CAT. NO.  | SIZE (IN.)              | STD. CTN. | STD. WT. (LBS.) | LENGTH (IN.) |
|-----------|-------------------------|-----------|-----------------|--------------|
| ▶ E948H   | 1½                      | 25        | 6               | 4            |
| ▶ E948J   | 2                       | 25        | 5               | 3            |
| ▶ E948K   | 2½                      | 25        | 16              | 6            |
| ▶ E948L   | 3                       | 25        | 13              | 4            |
| ▶ E948N   | 4                       | 10        | 8               | 6.5          |
| ▶ E948P   | 5                       | 14        | 33              | 7            |
| ▶ E948R   | 6                       | 6         | 16              | 6            |
| ▶ E948JR  | 2                       | 15        | 8               | 6            |
| ▶ E948JS  | 2 (Sch. 40 Split Duct)  | 25        | 6               | —            |
| ▶ E948KS7 | 2½ (Sch. 40 Split Duct) | 25        | 19              | 7            |
| ▶ E948L12 | 3                       | 1         | 1               | 12           |
| ▶ E948L6  | 3                       | 15        | 15              | 6            |
| ▶ E948LS  | 3 (Sch. 40 Split Duct)  | 25        | 17              | —            |
| ▶ E948N12 | 4                       | 10        | 28              | 12           |
| ▶ E948N7  | 4                       | 15        | 25              | 7            |
| ▶ E948NS  | 4 (Sch. 40 Split Duct)  | 10        | 15              | —            |
| ▶ E948PS  | 5 (Sch. 40 Split Duct)  | 1         | 2               | —            |
| ▶ E948R10 | 6                       | 6         | 25              | 10           |
| ▶ E948R12 | 6                       | 6         | 25              | 12           |
| ▶ E948RS  | 6 (Sch. 40 Split Duct)  | 1         | 2               | —            |

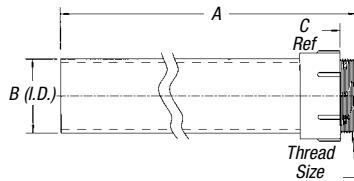
### Special Schedule 40 Swedge Couplings

| CAT. NO. | SIZE (IN.) | STD. CTN. | STD. WT. (LBS.) |
|----------|------------|-----------|-----------------|
| ▶ E442K  | 2½         | 20        | 13              |
| ▶ E442R  | 6          | 6         | 27              |
| ▶ E442T  | 8          | 2         | 17              |

\*Consult factory for additional sizes

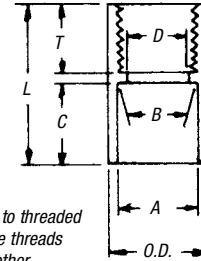


### Schedule 40 Risers



| CAT. NO. | SIZE (IN.) | A (IN.) (LENGTH) | B (IN.) | C (IN.) | THREAD SIZE (IN.) | STD. CTN. | STD. WT. (LBS.) |
|----------|------------|------------------|---------|---------|-------------------|-----------|-----------------|
| ▶ E954HX | 1½         | 80.00            | 1.567   | .950    | 1½ NPT            | 1         | 3.8             |
| ▶ E954J  | 2          | 60.00            | 2.024   | .825    | 2 NPT             | 1         | 3.7             |
| ▶ E954JX | 2          | 80.00            | 2.024   | .825    | 2 NPT             | 1         | 5.0             |
| ▶ E954K  | 2½         | 60.00            | 2.418   | .812    | 2½ NPSC           | 1         | 6.0             |
| ▶ E954KX | 2½         | 80.00            | 2.418   | .812    | 2½ NPSC           | 1         | 8.4             |
| ▶ E954L  | 3          | 60.00            | 3.616   | .798    | 3 NPSC            | 1         | 8.7             |
| ▶ E954LX | 3          | 80.00            | 3.616   | .798    | 3 NPSC            | 1         | 11.0            |

### Female Adapters



For adapting non-metallic conduits to threaded fittings, metallic systems. Female threads on one end, socket end on other.



LR31146

LISTED  
E23018  
Except where noted by ▶

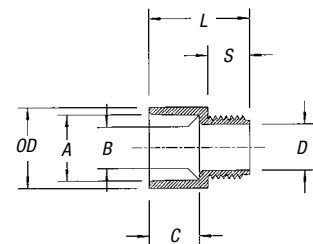
| CAT. NO.   | SIZE (IN.) | STD. CTN. | TYPICAL (IN.)          |       | MIN. D (IN.) | MAX. O.D. (IN.) | TYPICAL (IN.) |    |    |
|------------|------------|-----------|------------------------|-------|--------------|-----------------|---------------|----|----|
|            |            |           | A                      | B     |              |                 | C             | S  | L  |
| E942D      | ½          | 150       | .852                   | .836  | .620         | 1¼              | ¼             | ¾  | 1¼ |
| E942E      | ¾          | 100       | 1.064                  | 1.046 | .822         | 1½              | ¼             | ¾  | 1½ |
| E942F      | 1          | 50        | 1.330                  | 1.310 | 1.046        | 1¾              | ¼             | ¾  | 1¾ |
| E942G      | 1¼         | 30        | 1.677                  | 1.655 | 1.377        | 2¼              | 1             | ¾  | 2  |
| E942H      | 1½         | 25        | 1.918                  | 1.894 | 1.607        | 2¾              | 1½            | ¾  | 2¾ |
| E942J      | 2          | 30        | 2.393                  | 2.369 | 2.064        | 3¼              | 1             | 1  | 2½ |
| E942K      | 2½         | 20        | 2.890                  | 2.868 | 2.450        | 3¾              | 1½            | 1½ | 2¾ |
| E942L      | 3          | 25        | 3.515                  | 3.492 | 3.000        | 4¼              | 1¾            | 1¾ | 3¼ |
| E942M      | 3½         | 20        | 4.015                  | 3.992 | 3.500        | 4¾              | 1¾            | 1¾ | 3¾ |
| E942N      | 4          | 15        | 4.515                  | 4.491 | 4.000        | 5¼              | 1¾            | 1¾ | 3¾ |
| ▶ E942NX9* | 4          | 15        | (Call for information) |       |              |                 |               |    |    |
| E942P      | 5          | 8         | 5.593                  | 5.553 | 5.047        | 6¼              | 1¾            | 1¾ | 3¾ |
| E942R      | 6          | 6         | 6.658                  | 6.614 | 6.055        | 7¼              | 2¼            | 1¾ | 3¾ |
| ▶ E942RX*  | 6          | 6         | (Call for information) |       |              |                 |               |    |    |

\* Long-Line Adapter

### Male Terminal Adapters



For adapting non-metallic conduits to boxes, threaded fittings, metallic systems. Male threads on one end, socket end on other.



| CAT. NO. | SIZE (IN.) | STD. CTN. | TYPICAL (IN.) |       | MIN. D (IN.) | MAX. O.D. (IN.) | TYPICAL (IN.) |      |       |
|----------|------------|-----------|---------------|-------|--------------|-----------------|---------------|------|-------|
|          |            |           | A             | B     |              |                 | C             | S    | L     |
| E943D    | ½          | 150       | .852          | .836  | .594         | 1.042           | .652          | .545 | 1.310 |
| E943E    | ¾          | 125       | 1.064         | 1.046 | .793         | 1.290           | .809          | .553 | 1.470 |
| E943F    | 1          | 50        | 1.330         | 1.310 | 1.025        | 1.580           | .965          | .812 | 1.902 |
| E943G    | 1¼         | 50        | 1.677         | 1.655 | 1.345        | 1.973           | 1.208         | .816 | 1.986 |
| E943H    | 1½         | 25        | 1.918         | 1.894 | 1.574        | 2.188           | 1.155         | .802 | 2.105 |
| E943J    | 2          | 50        | 2.393         | 2.369 | 1.998        | 2.713           | 1.145         | .825 | 2.093 |
| E943K    | 2½         | 25        | 2.890         | 2.868 | 2.400        | 3.290           | 1.490         | .812 | 2.480 |
| E943L    | 3          | 45        | 3.515         | 3.492 | 2.989        | 3.965           | 1.643         | .797 | 2.660 |
| E943M    | 3½         | 30        | 4.015         | 3.992 | 3.405        | 4.515           | 1.720         | .802 | 2.740 |
| E943N    | 4          | 20        | 4.515         | 4.491 | 3.895        | 5.065           | 1.788         | .733 | 2.830 |
| E943P    | 5          | 5         | 5.593         | 5.553 | 4.900        | 6.104           | 1.935         | .990 | 3.200 |
| E943R    | 6          | 10        | 6.658         | 6.614 | 5.900        | 7.288           | 2.128         | .985 | 3.410 |