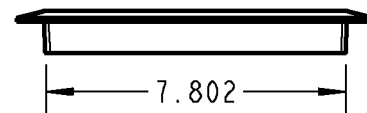
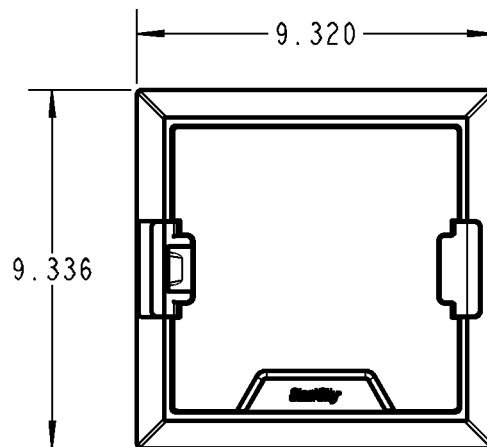
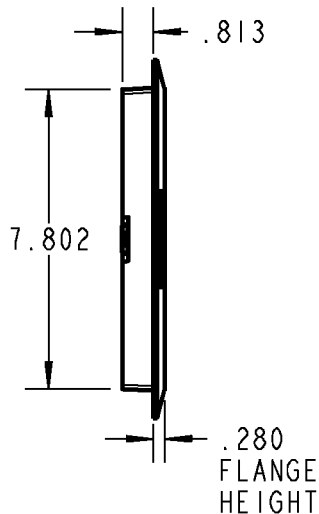


665-CST-M SERIES METALLIC COVERS



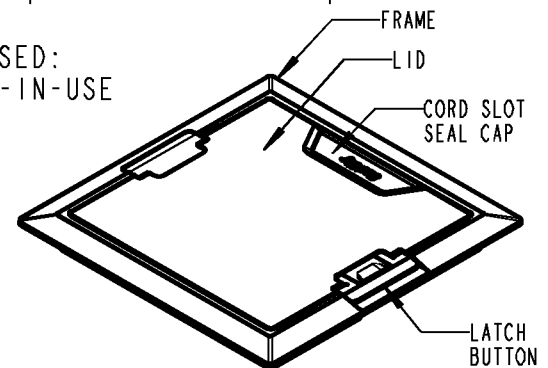
CATALOG NUMBERS:

665-CST-M-ALM
665-CST-M-BRS
665-CST-M-BLK

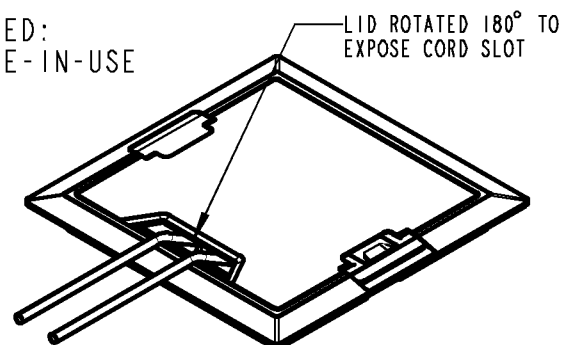
FEATURES:

- ☐ METALLIC FLOOR BOX COVER DESIGNED FOR USE WITH 665 SERIES CONCEALED FLOOR BOXES.
- ☐ MADE FROM SOLID BRASS AND ALUMINUM.
- ☐ MOPTIGHT WITH FACTORY INSTALLED GASKETS. MEETS UL SCRUB-WATER REQUIREMENTS FOR TILE, CARPET AND WOOD FLOORS.
- ☐ LID CAN BE ROTATED TO ALLOW FOR OPEN ACCESS OF CORD SLOT. LID IS ATTACHED WITH A 6-INCH INSULATED WIRE LANYARD.
- ☐ 1,500-LB MAXIMUM LOAD CAPACITY.

CLOSED:
NOT-IN-USE



CLOSED:
WHILE-IN-USE



GENERAL NOTES

1. ALL DIMENSIONS ARE FOR REFERENCE ONLY.
2. DIMENSIONS IN BRACKETS [] ARE IN METRIC UNITS.

REVISIONS

- | | |
|---|--|
| - | SEE ERN (****) FOR APPROVAL SIGNATURES & RELEASE DATE.
PROJECT NO: **** |
|---|--|

www.tnb.com

DESCRIPTION:

**665-CST-M SERIES
METALLIC CONCEALED SERVICE TOP**

ORIGINAL PROJECT NO / (ERN NO)

003D000605 / (2016749)

SHEET NO:

1 OF 1

REV. NO:

-

DRAWING NO:

WSD-001538

Thomas & Betts
A Member of the ABB Group