



APC Smart-UPS

The First Cloud-enabled UPS For Distributed IT

Schneider Electric award-winning APC™ Smart-UPS™ is the most popular UPS in the world for servers, storage and network power protection. Smart-UPS provides availability and manageability to your network allowing you to focus on business growth instead of business downtime.

All Smart-UPS are EcoStruxure™ Ready and offer multiple monitoring options scalable to your needs.

EcoStruxure™ IT SmartConnect is designed for essential monitoring, allowing you to view the status of your UPS health and receive notifications – all enabled out-of-box through the dedicated SmartConnect Ethernet Port. Feature availability varies with terms of use.

Register your device on the SmartConnect web portal now, to discover the benefits of remote UPS monitoring with additional features available via upgrade plans. More information and terms of use at

<https://smartconnect.apc.com/welcome>

Life Is On



The World's Most Popular UPS Just Got Smarter

EcoStruxure IT SmartConnect:



Features vary with terms of use.

SmartConnect remote UPS monitoring

- Wizard for user account creation and Smart-UPS device registration
- No special software, SNMP traps or coding required to set up reporting
- Receive proactive actionable alerts and lifecycle recommendations
- Mobile responsive interface adjusts to any screen size including mobile and tablet
- Ideal for distributed IT and remote sites - run Self Test and UPS firmware upgrade from cloud
- Remote power-cycling of outlet groups on Advanced Plan

Smart-UPS Features:

Connectivity Options

Connect to SmartConnect or to EcoStruxure IT via the SmartConnect Ethernet Port for remote UPS monitoring.

Sinewave

Sinewave is designed to emulate utility power, it will support your device upon battery backup

Intelligent Battery Management

Temperature compensated charging extends life and advanced algorithms recommend replacement date

High-efficiency Green mode

Optimum efficiency, which saves on utility and cooling costs

Network-grade Power

Provides stable power conditions by filtering noise, automatic voltage regulation (AVR), and surge protection

Emergency Power Off (EPO)

Provides for remote UPS shut-off in the event of a fire or other emergency (2,200 VA and above)

Getting Started with SmartConnect is Easy



Install your UPS

Install your SmartConnect-compatible UPS at your business site. Connect it to your network using a dedicated ethernet port.

Scan the QR code

Scan the QR Code printed on your Smart-UPS, and automatically register your device with the SmartConnect Web Portal.

Register your UPS

Create a Schneider Electric account to register your Smart-UPS. Your UPS will be automatically linked to your account.

Life Is On

Schneider
Electric

APC Smart-UPS SMC Features

Application optimized models ideal for entry level servers, point-of-sale (POS) and other small network devices



SmartConnect Ethernet Port

Proactive remote UPS cloud monitoring feature out-of-box, accessible from any internet connected device

Sinewave Output

Simulates the utility when on battery for optimum device compatibility

Advanced Battery Management

Temperature compensated charging extending the life of internal batteries

High Efficiency Green Mode

Save on utility costs while reducing heat to promote longer component life

Network Grade Power Conditioning

Automated voltage regulation (AVR), noise filtering and surge protection

LCD Display

Intuitive interface provides comprehensive status information at-a-glance

Communication Ports

USB and serial ports for UPS management

Safety-agency Approved

Ensures the product has been tested and approved to national standards

Generous Number of Outlets

All receptacles are surge and UPS protected

Battery Disconnect

Convenient way to disconnect battery for transport (Tower models)



APC Smart-UPS SMC

The most affordable Sinewave UPSs in the Smart-UPS family. Designed for entry-level servers, it is compatible with today's active power factor corrected (PFC) power supplies.

Life Is 

Schneider
Electric

CONNECTED

APC Smart-UPS SMC Display Comprehensive LCD interface for status at a glance



LCD display

Comprehensive status at a glance

Status conditions:

- On line
- On battery
- Green mode
- Load graph
- Battery charge graph
- Audible alarm

Measure:

- Input & output voltage
- Load viewable in watts, VA and percentage
- Output current and frequency
- Event counter
- Estimated on battery runtime

- 1 On line / On battery
- 2 On / Off button
- 3 System fault LED
- 4 Mute button
- 5 Display button

Life Is On

Schneider
Electric

APC Smart-UPS SMT Features

Intelligent and efficient network power protection from entry level to scalable runtime. Ideal for servers, point-of-sale, routers, switches, hubs, and other network devices.

In addition to Smart-UPS SMC features:



SmartSlot™ Interface

Accepts a wide array of accessory cards for advanced management and environmental monitoring

Switched Outlet Group

Controlled separately from the UPS for discrete reboot of hung devices, sequenced ON/OFF, and non-critical load shedding

Configurable, Multi-lingual LCD Display

Provides UPS status and key measures at a glance. Clear and accurate, menu-driven display for easy set-up and customization with or without software installation

Extended-range Automatic Voltage Regulation

Provides enhanced brownout protection, boosting incoming voltage up to 30% without using battery power

Rack-mount Rails

Rail kit provided to securely install the 2.2kVA and 3kVA models in your IT rack

Emergency Power Off (EPO)

Provides for remote UPS shut-off in the event of a fire or other emergency (2.2kVA and above)



APC Smart-UPS

Advanced line-interactive power protection for servers and network equipment

Life Is On





APC Smart-UPS SMT Display

Intuitive, easy-to-use LCD interface



LCD Display Screen

Clear, consistent, and detailed information in your choice of basic or advanced menus

Power Status

Operating mode, efficiency, load, input / output frequency, battery capacity, runtime and more

Configuration

Easily configure: language, power quality, alarms, delay and threshold settings

Test and Diagnostics

Initiate battery and runtime calibration tests

Control

UPS and outlet group settings

Logs

See explanation of last 10 transfers and faults

Quick Status Indicators

Online, on battery, fault, and replace battery LEDs for quick status identification

Escape, Return and Navigation Buttons

Intuitive navigation to confirm, exit or adjust settings

Load Energy Meter

Track energy usage in kilowatt-hours

Life Is On



APC Smart-UPS Management Solutions

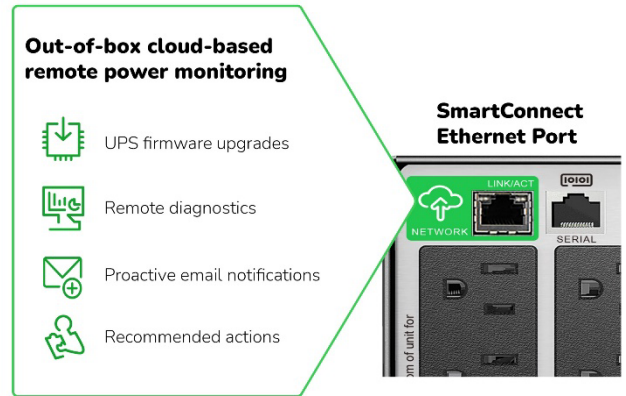
SmartConnect Ethernet Port

Out-of-box remote UPS power monitoring

Automatically included in connected Smart-UPS units, SmartConnect is an ingenious connectivity feature that makes Smart-UPS even more adaptable and easier to deploy: SmartConnect allows you to view the status of your UPS through a secure web portal. Through this innovative remote monitoring interface, you will receive automatic notifications, UPS firmware upgrades with one-click installation, and be able to run remote Self Tests. Feature availability varies with terms of use.

Advanced Plan on SmartConnect, with remote Outlet Group reboot, facilitates power cycling of connected IT equipment without going on-site.

<https://smartconnect.apc.com/welcome>



SmartConnect Features:

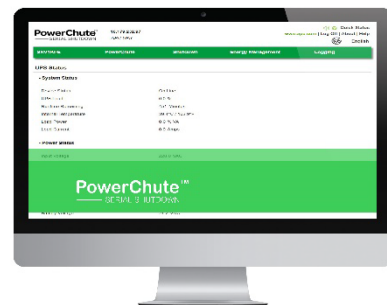
- No additional accessory card, software, or gateway required
- Actionable alerts and lifecycle recommendations
- The SmartConnect web portal is accessible from any internet connected device
- Remote power-cycling of IT equipment on Advanced Plan

PowerChute™ Serial Shutdown

UPS manageability at your fingertips

UPS management, graceful shutdown, and energy management software for servers using dedicated serial or USB connections.

Energy usage, cost and CO2 reporting provide a greater understanding of the energy consumed by IT equipment, enabling improved energy efficiency. Learn more and download from <https://www.apc.com/pcss>.



PowerChute Serial Shutdown Features:

- UPS monitoring & management
- Configurable energy cost
- Unattended, graceful shutdown during power events
- Multiple languages (English, French, German, Italian, Simplified Chinese, Spanish (International), Brazilian Portuguese) support
- Secure web User Interface (UI) access
- Energy & CO2 emissions reporting
- Multiple operating system support

Life Is On

Schneider
Electric

APC Smart-UPS Management Solutions

UPS Network Management Cards

For remote management and control

Connect to your network and enjoy direct control

APC UPS network management cards allow for secure connection and control of an individual APC UPS unit via web browser, command-line interface, or SNMP. The configurable notification features keep you informed of problems as they occur. For protected servers, the included PowerChute Network Shutdown software provides graceful, unattended shutdown in the event of an extended power outage, always keeping business information safe.



AP9641



AP9834

Network management card features:

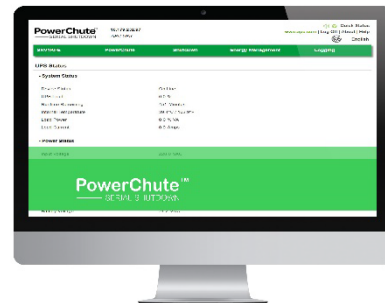
- Browser accessible: View the user interface with a browser for quick access from anywhere, on a secure network
- Remote device management: Enable management of your UPS by connecting it directly to the network
- Fault notification: Get real-time event notifications, minimizing response time to critical physical infrastructure situations – reducing mean time to repair, improving efficiency, and maximizing uptime
- Reboot equipment remotely: Eliminate the need to dispatch technicians to remote locations

PowerChute™ Network Shutdown

Industry-leading power protection for your hyper-converged and virtual infrastructure

In conjunction with the APC UPS Network Management Card, PowerChute Network Shutdown protects your physical and virtual IT environment from threats to IT availability.

Network-based, graceful, unattended shutdown and restart of your physical servers and virtual machines protects data integrity and reduces system downtime during prolonged power disturbances. Learn more and download from <https://www.apc.com/pcns>.



PowerChute Network Shutdown Features:

- Unattended, graceful network-based shutdown during power events
- Sequenced Server Shutdown
- Integration with all major Virtualization hypervisors including VMware ESXi, Microsoft Hyper-V
- Integration with industry leaders in HCI (Dell VxRail, Nutanx®, VMware vSAN™, Cisco HyperFlex®, HPE SimpliVity)
- Support for virtual clusters
- Virtual Machine prioritization & migration/shutdown
- Redundant and Parallel UPS support
- Secure communication via HTTPS
- Scalable architecture to support virtually unlimited number of systems

Life Is On

Schneider
Electric

APC Smart-UPS Services and Accessories

Schneider Electric Critical Power & Cooling Services (CPCS) provides the highest quality services and solutions by trained and trusted professionals. Our world-class services offer a smart way to build, operate, and maintain your critical applications, ensuring the right people, in the right place, at the right time.

UPS management accessories

- AP9640: UPS Network Management Card
- AP9641: UPS Network Management Card with environmental monitoring
- AP9834: APC USB Wi-Fi Device for wireless communication [compatible with AP9641 & AP9643 pre-installed or embedded]



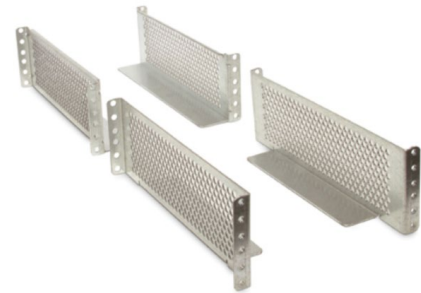
AP9641



AP9834

Additional accessories

- AP9625: APC Smart-UPS two-post rail kit
- SU032A: APC Smart-UPS 4-post rack-mount rails



AP9625

Service bypass panels

- SBP1500RM: APC service bypass PDU, 120V; 15 amp with (8) NEMA 5-15R
- SBP300RM: APC service bypass PDU, 120V; 30 amp with (4) NEMA 5-20R



SBP300RM

APC Smart-UPS SMC

Tower Technical Specifications



SMC1000C

SMC1500C

Output

| | | |
|------------------------|----------------|---------------|
| Power Capacity | 600W / 1000VA | 900W / 1500VA |
| Nominal Output Voltage | 120V | |
| Output Frequency | 47-63 Hz | |
| Wave Form Type | Pure Sinewave | |
| Output Connections | (8) NEMA 5-15R | |

Input

| | | |
|--|---------------------------------|--|
| Nominal Input Voltage | 120V | |
| Input Voltage Range for main operations (Max adjustable range) | 92-132V (85-136V) | |
| Input Frequency | 50/60 Hz +/-3 Hz (auto sensing) | |
| Input Connection | NEMA 5-15P, 6ft cord | |

Batteries and Runtime

| | | |
|----------------------|--|--------|
| Battery Type | Maintenance-free sealed lead-acid battery with suspended electrolyte | |
| Runtime at Half Load | 14 min | 11 min |
| Runtime at Full Load | 5.Min | 4 min |
| Replacement Battery | APCRBC142 | RBC6 |

Communication and Management

| | | |
|----------------------------------|--|--|
| APC SmartConnect Enabled | Yes, Features vary with Terms of Use | |
| Interface Ports | USB and Serial (RJ45) | |
| Control Panel and Audible Alarms | Etched glass LCD display with LED status indicators; alarm on battery, distinctive low battery alarm | |

Surge Protection Filtering

| | | |
|------------------------------|--|--|
| Surge Energy Rating (Joules) | 693 J | |
| Filtering | Full time multi-pole noise filtering: 0.3% IEEE surge let-through, zero clamping response time, meets UL1449 | |

Physical

| | | |
|------------------------|----------------------|----------------------|
| Dimensions (H x W x D) | 8.5 x 6.72 x 17.3 in | 8.45 x 6.7 x 17.3 in |
| Net Weight | 38 lbs. | 45 lbs. |

Conformance

| | | |
|-----------------------------|--|--|
| Regulatory | UL 1778, CSA FCC Part 15 Class A, BSMI, NOM | |
| Warranty | 2 years repair or replace for unit and battery | |
| Equipment Protection Policy | \$150,00 lifetime | |

Life Is On



APC Smart-UPS SMC

Rackmount Technical Specifications



SMC1000-2UC

SMC1500-2UC

Output

| | | |
|------------------------|----------------|---------------|
| Power Capacity | 600W / 1000VA | 900W / 1500VA |
| Nominal Output Voltage | 120V | |
| Output Frequency | 47-63 Hz | |
| Wave Form Type | Pure Sinewave | |
| Output Connections | (6) NEMA 5-15R | |

Input

| | | |
|--|------------------------------------|--|
| Nominal Input Voltage | 120V | |
| Input Voltage Range for main operations (Max adjustable range) | 106 – 130 V (97-136V) | |
| Input Frequency | 50 / 60 Hz +/- 3 Hz (auto-sensing) | |
| Input Connection | NEMA 5-15P, 8ft cord | |

Batteries and Runtime

| | | |
|----------------------|--|-----------|
| Battery Type | Maintenance-free sealed lead-acid battery with suspended electrolyte | |
| Runtime at Half Load | 14 min | 18 min |
| Runtime at Full Load | 5 min | 6 min |
| Replacement Battery | APCRBC124 | APCRBC157 |

Communication and Management

| | | |
|----------------------------------|--|--|
| APC SmartConnect Enabled | Yes, Features vary with Terms of Use | |
| Interface Ports | USB and Serial (RJ45) | |
| Control Panel and Audible Alarms | Etched glass LCD display with LED status indicators; alarm on battery, distinctive low battery alarm | |

Surge Protection Filtering

| | | |
|------------------------------|--|--|
| Surge Energy Rating (Joules) | 455 J | |
| Filtering | Full time multi-pole noise filtering: 0.3% IEEE surge let-through, zero clamping response time, meets UL1449 | |

Physical

| | | |
|------------------------|----------------------|----------------------|
| Dimensions (H x W x D) | 3.5 x 18.9 x 16.0 in | 3.5 x 18.9 x 18.0 in |
| Net Weight | 38 lbs. | 59 lbs. |

Conformance

| | | |
|-----------------------------|--|--|
| Regulatory | UL 1778, CSA FCC Part 15 Class A, BSMI, NOM | |
| Warranty | 2 years repair or replace for unit and battery | |
| Equipment Protection Policy | \$150,00 lifetime | |

Life Is On

Schneider
Electric

APC Smart-UPS SMT

Tower Technical Specifications



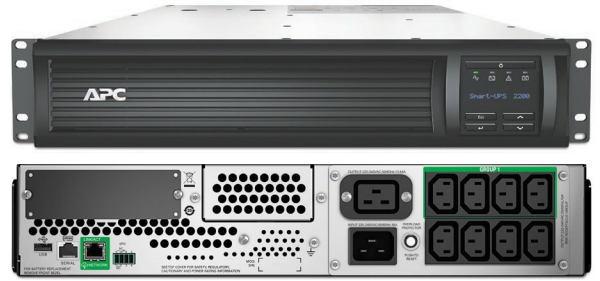
| | SMT750C | SMT1000C | SMT1500C SMT1500CNC | SMT2200C | SMT3000C |
|--|---|---------------|------------------------|----------------------|----------------|
| Output | | | | | |
| Power Capacity | 500 W/750 VA | 700W / 1000VA | 1000W / 1500VA | 1980 W/2200 VA | 2700 W/3000 VA |
| Nominal output voltage | 120 | | | | |
| Output frequency | 47 - 53 Hz for 50 Hz nominal; 57 – 63 Hz for 60 Hz nominal | | | | |
| Waveform type | Pure Sinewave | | | | |
| Output connections (NEMA) | (6) 5-15R | (8) 5-15R | | (8) 5-15R, (2) 5-20R | |
| Switched outlet groups | - | 1 | | | |
| Input | | | | | |
| Nominal input voltage | 120V | | | | |
| Input voltage range for main operations (Max adjustable) | 82 – 144 (75 – 154V) | | | | |
| Input frequency | 50/60 Hz +/-3 Hz (auto sensing) | | | | |
| Input connection | 5-15P | | | 5-20P | L5-30P |
| Batteries and runtime | | | | | |
| Battery type | Maintenance-free sealed lead-acid battery with suspended electrolyte; leak proof | | | | |
| Replacement battery | RBC48 | RBC6 | RBC7 | RBC55 | |
| Runtime estimates | | | | | |
| 200W | :22 | :45 | 1:24 | 2:17 | 2:29 |
| 500W | :05 | :10 | :23 | :51 | :55 |
| 700W | - | :06 | :12 | :34 | :37 |
| 1000W | - | - | :07 | :21 | :23 |
| 1400W | - | - | - | :13 | :14 |
| 1600W | - | - | - | :10 | :12 |
| Full load | :05 | :06 | :07 | :07 | :06 |
| Communications and management | | | | | |
| APC SmartConnect Enabled | Yes, Features vary with Terms of Use | | | | |
| Interface ports | Serial (RJ45), USB, and SmartSlot for NMC | | | | |
| Control panel and audible alarms | Alpha-numeric LCD display with LED status indicators; alarm on battery, distinctive low battery alarm and configurable delays "NC" versions have AP9641 network management card pre-installed in the SmartSlot | | | | |
| Emergency power off (EPO) | Optional | | | Yes | |
| Physical | | | | | |
| Maximum height (inches) | 6.2 | 8.5 | 8.5 | 17.0 | 17.0 |
| Maximum width (inches) | 5.4 | 6.7 | 6.7 | 7.7 | 7.7 |
| Maximum depth (inches) | 14.1 | 17.3 | 17.3 | 21.5 | 21.5 |
| Net weight (pounds) | 29 | 42 | 53 | 11.2 | 116 |
| Conformance | | | | | |
| Regulatory | UL 1778, CSA | | | | |
| Warranty and equipment protection | 3-year electronics, 2-year battery, and \$150,000 lifetime EPP | | | | |

Life Is On

Schneider
Electric

APC Smart-UPS SMT

Rackmount Technical Specifications



| | SMT750RM2UC SMT750RM2UCNC | SMT1000RM2UC | SMT1500RM2UC SMT1500RM2UCNC | SMT2200RM2UC SMT2200RM2UCNC | SMT3000RM2UC SMT3000RM2UCNC |
|--|---|---------------|--------------------------------------|--------------------------------|--------------------------------|
| Output | | | | | |
| Power Capacity | 500 W/750 VA | 700W / 1000VA | 1000W / 1500VA | 1980 W/2200 VA | 2700 W/3000 VA |
| Nominal output voltage | 120V | | | | |
| Output frequency | 47 – 53 Hz for 50 Hz nominal; 57 – 63 Hz for 60 Hz nominal | | | | |
| Waveform type | Pure Sinewave | | | | |
| Output connections (NEMA) | (6) 5-15R | (4) 5-15R | (6) 5-15R | (6) 5-15R, (2) 5-20R | |
| Switched outlet groups | 1 | | | | |
| Input | | | | | |
| Nominal input voltage | 120V | | | | |
| Input voltage range for main operations (Max adjustable) | 82 – 144 (75 – 154V) | | | | |
| Input frequency | 50/60 Hz +/-3 Hz (auto sensing) | | | | |
| Input connection | 5-15P | | | 5-20P | L5-30P |
| Batteries and runtime | | | | | |
| Battery type | Maintenance-free sealed lead-acid battery with suspended electrolyte; leak proof | | | | |
| Replacement battery | APCRBC123 | APCRBC157 | APCRBC159 | RBC43 | |
| Runtime estimates | | | | | |
| 200W | :24 | 1:10 | 1:32 | 1:24 | 1:26 |
| 500W | :05 | :17 | :26 | :35 | :38 |
| 700W | - | :09 | :14 | :24 | :26 |
| 1000W | - | - | :07 | :15 | :17 |
| 1400W | - | - | - | :09 | :11 |
| 1600W | - | - | - | :07 | :09 |
| Full load | :06 | :09 | :04 | :05 | :03 |
| Communications and management | | | | | |
| APC SmartConnect Enabled | Yes, Features vary with Terms of Use | | Yes, Features vary with Terms of Use | | |
| Interface ports | Serial (RJ45), USB, and SmartSlot "NC" versions have AP9641 network management card pre-installed in the SmartSlot | | | | |
| Control panel and audible alarms | Alpha-numeric LCD display with LED status indicators; alarm on battery, distinctive low battery alarm and configurable delays | | | | |
| Emergency power off (EPO) | Optional | | | Yes | |
| Physical | | | | | |
| Maximum height (inches) | 3.5 | 3.5 | 3.5 | 3.5 | 3.5 |
| Maximum width (inches) | 17.0 | 17.0 | 17.0 | 19.0 | 19.0 |
| Maximum depth (inches) | 16.0 | 18.0 | 18.0 | 27.0 | 17.0 |
| Net weight (pounds) | 38 | 62 | 63 | 93 | 97 |
| Conformance | | | | | |
| Regulatory | UL 1778, CSA | | | | |
| Warranty and equipment protection | 3-year electronics, 2-year battery, and \$150,000 lifetime EPP | | | | |