

QUICK START GUIDE



FEATURES:

- 4, 8, or 16 Channel HD-TVI / AHD / CVI / CVBS BNC Inputs Supporting up to 5 MegaPixel + IP Camera Support with ability to substitute up to 8 (VT-TR5HA820/VT-TR5HA1620) 4 (VT-TR5HA410) HDA inputs for IP cameras
- IP Camera Support up to 3 MegaPixel (VT-TR5HA410) / up to 4 MegaPixel (VT-TR5HA820 / VT-TR5HA1620)
- Live View: TVI/AHD: 5MP @ 20fps; 4MP, 3MP, 1080P, 720P, WD1 @ 30fps / CVI: 1080P, 720P @ 30fps
- Recording: 5MP: 10fps / 4MP/3MP: 15fps / 4MP lite/1080P/720P/WD1: 30fps
- HDMI (4K), VGA, and BNC Spot Video Output
- Simple plug and play, point-to-point connection from camera to DVR
- H.264 Compression
- 2-Way Audio
- PTZ Control over RS-485 / Control over Coax (CoC)
- 4 Alarm inputs / 1 Alarm Output
- Pentaplex: Live Display / Record / Playback / Backup / Remote Access
- 1 Internal SATA2/SATA3 HDD Slot supporting up to 8TB (1 x 8TB HDD) (VT-TR5HA410) / 2 Internal SATA2/SATA3 HDD Slot supporting up to 16TB (2 x 8TB HDD) (VT-TR5HA820 / VT-TR5HA1620)
- Applications for iOS & Android
- Remote Viewing over the Internet via Web Browser or LAN
- Mac OS® Client & CMS Central Management Software Included
- Supports both Dynamic and Static IP Addresses
- Control locally via USB Mouse or IR Remote control



PLEASE NOTE:
Complete manual can be found on
included USB flash drive and at:
www.vitekccv.com

SETUP & CONFIGURATION:

1. Notes

- Please read this instruction carefully for correct use of the product and preserve it for reference purposes.
- This manual is suitable for 4/8/16 CH HD Hybrid DVR. All the examples and pictures used here are for reference only.
- There may be technically incorrect places or printing errors in this manual. The updates will be added into the future versions of this manual. The contents of this manual are subject to change without notice.
- To prevent electric shocks and risk of fire hazards, do NOT use other than specified power source.

2. Check Package Contents

Please confirm that the device and all accessories are included in the package. If there is any damage, shortages or defects, please contact your dealer immediately.

- | | |
|----------------------------|--------------------------------------|
| 1) Transcendent Series DVR | 5) Rack Ears (8 & 16 Channel Models) |
| 2) IR Remote Control | 6) HDD Screws |
| 3) Quick Start Guide | 7) SATA Cables |
| 4) Power Supply | 8) USB Mouse |

3. Rear Panel Connections



VT-TR5HA410 Rear Panel Connections



VT-TR5HA820 Rear Panel Connections



VT-TR5HA1620 Rear Panel Connections

4. Startup & Shutdown

• Startup:

- 1 Connect a monitor and the power.
- 2 The device will boot up and the power indicator will display blue.
- 3 A wizard window will pop up.

• Shutdown:

Go to "Main Menu" and then select "Shutdown" icon. This will bring up a shutdown window. The device will shut down by clicking "OK" button. Then disconnect the power.

5. Login

You must configure the wizard when you start the DVR for the first time. You can skip the settings of wizard next time. The default username is admin and the password is set by you when you configure the wizard for the first time. Click "Start" and select "Login". This will take you to a login box. The default username is admin; the default password is 123456. Enter username and password and click "Login" button to go to the main menu setup.

Login

Username: admin

Password: Enter Password

Display Password Log In Automatically

Edit Security Question Login Cancel

6. Analog Camera Connection

First connect the camera to the DVR. Then go to Start → Settings → Camera → Manage Camera → Signal Access Set to checkmark the video mode. The actual signals input shall correspond to the video mode. Please refer to User Manual for details.

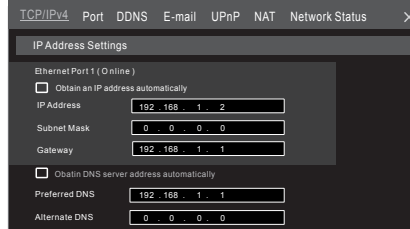
7. Network Configuration & Adding IP Cameras

After you finish adding IP cameras, you can see the live images through the monitor of the DVR. The following will mainly introduce how to add the IP cameras via LAN/WAN.

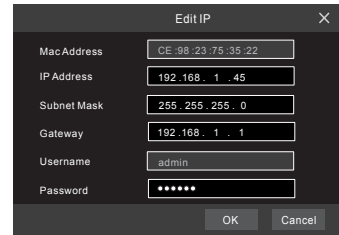
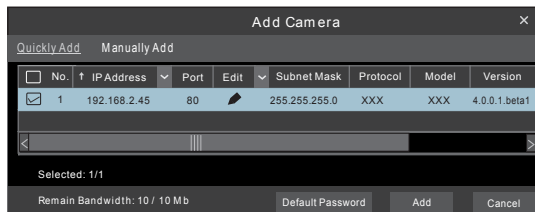
► LAN

- 1 Set the network of the DVR. Go to Start → Settings → Network → TCP/IPv4. Input IP address, subnet mask, gateway, etc. If using DHCP, please enable DHCP in both the DVR and the router.
- 2 Go to Start → Settings → Network → Port. Input HTTP port (the default value is 80), server port (the default port is 6036).

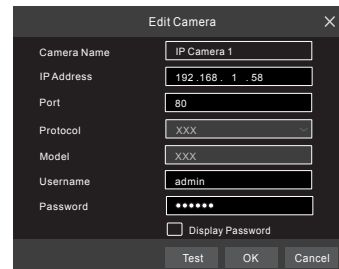
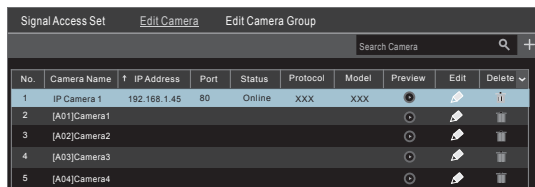
- 3 Click “Apply” to save the settings.



- 4 Go to Start → Settings → Camera → Add Camera. The DVR will automatically refresh the cameras searched. The IPC which supports the Onvif protocol may be added manually. If the IPC searched is not in the same local network as the DVR, you should select the device and click to modify the IP address.



- 5 Checkmark the device you want to add and then click “Add” button. The DVR will automatically refresh the cameras and return to “Edit Camera” interface. “Online” status means connecting the device successfully and you will see the live image. You may select the added device and click to modify channel, IP address, ect.



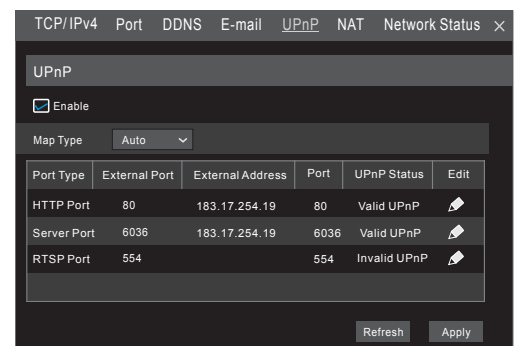
► WAN

- 1 Set the network of the DVR. Go to Start → Settings → Network → TCP/IPv4. Input static IP address or enable PPPoE and then input the user name and password received from your ISP.
- 2 Go to Start → Settings → Camera. Click “Add Camera” or behind the column of the search camera and select “Manually Add” to add IP cameras. Input IP address, server port, username and password of the IP camera. The IP camera must be connected over WAN. And here the IP address of the IP camera must be a WAN IP address.

8. UPnP

You can use the UPnP function to enable a fast connection of the device to WAN via a router without port mapping.

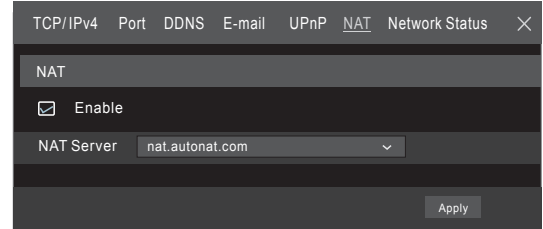
- 1 Go to Start → Settings → Network → UPnP, and enable UPnP and then click “Apply” button to save.
- 2 Enable the UPnP function in the router.
- 3 Click “Refresh” button to refresh the UPnP status. If the UPnP status is still “Invalid UPnP” after refreshing it several times, the port would be wrong. Please change the mapping type to “Manual” and then click to modify the port until the UPnP status turns to “valid UPnP”.



9. NAT


► NAT Settings

- 1 Make sure the DVR is powered and connected to a network.
- 2 Go to Start → Settings → Network → TCP/IPv4. You can obtain the IP address, subnet mask and gateway automatically. You can also manually enter them according to the actual network situation. Please make sure the network segment is the same as that of the network which is used.
- 3 Set the preferred or alternative DNS Server. Click “Apply” to save the parameters.
- 4 Go to Start → Settings → Network → NAT tab. Enable NAT and select the NAT Server (The default NAT Server is nat.auto-nat.com). Click “Apply” to save the parameters.



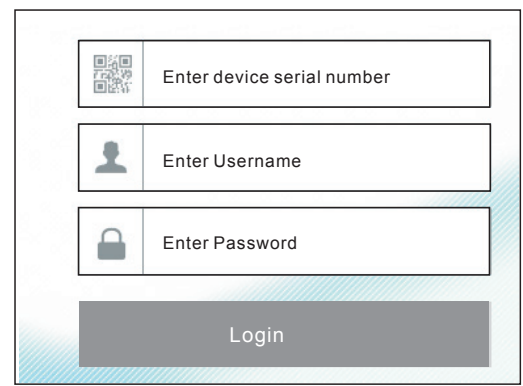
► NAT Access

After finishing the NAT settings, you can input www.autonat.com in the IE address bar and then press enter to go to the following interface. If this is the first time accessing the NAT, you need to download and install the ActiveX according to the popup tips. After installing ActiveX successfully, it will display the login box.



Device Serial Number: Click  on the menu bar at the bottom of the live interface to check the serial number or go to Start → Settings → Network → Network Status to check the serial number of the DVR).

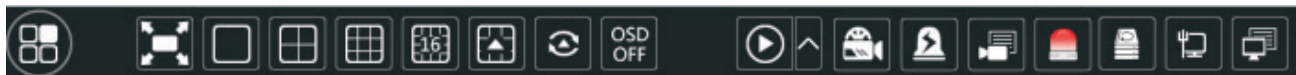
Username: The username of the DVR. (Default: admin)

Password: The password of the DVR. (Default: 123456)



10. Manual Recording

Before recording, please install and format a HDD. In the live interface you can see the menu toolbar. Click  to start recording. Click it again to stop recording. You can also click  to check the status of the recording.





11. Playback

► Instant playback

Click “Instant Playback” in the right-click menu of the camera’s preview window to select.

► General playback

Click  on the tool bar at the bottom of the live preview interface or click Start → Playback to go to the playback interface as shown below. You can also add the playback cameras manually. Click  in the playback window to pop up the “Add Camera” window. Check the cameras in the window and then click “Add” to add playback camera. The recorded files of the added playback camera will be played in the playback interface.

