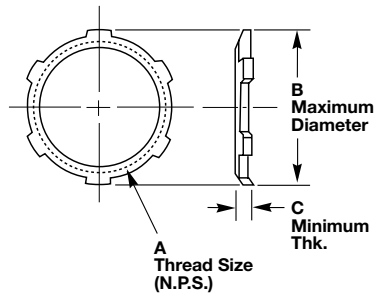


## NPT Thread Locknuts

### Zinc-Plated Steel

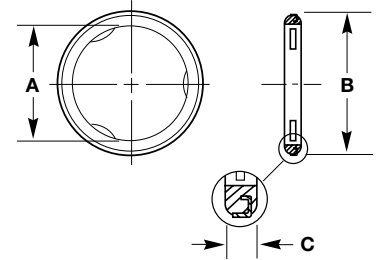
NPT Hub Size	A Inside Diameter Inches	B Outside Dia. Inches (mm)	C Thickness Inches (mm)	Steel Catalog Number
½	½"-14	1.14" (29.0)	.09" (2.3)	<b>00322001LPK50</b>
¾	¾"-14	1.43" (36.3)	.11" (2.8)	<b>00322002LPK50</b>
1	1"-11½	1.77" (45.0)	.13" (3.3)	<b>00322003LPK50</b>
1¼	1¼"-11½	2.28" (57.9)	.13" (3.3)	<b>00322004LPK50</b>
1½	1½"-11½	2.60" (66.0)	.13" (3.3)	<b>00322005LPK50</b>



## Metal Clad Sealing O-Rings – Sizes ½ - 4

### Zinc-Plated Steel with Neoprene Ring

NPT Hub Size	A Inside Diameter Inches (mm)	B Outside Dia. Inches (mm)	C Thickness Inches (mm)	Catalog Number
½	.80" (20.3)	1.08" (27.4)	.16" (3.2)	<b>20509001</b>
¾	1.00" (25.4)	1.34" (34.0)	.16" (3.2)	<b>20509002</b>
1	1.25" (31.6)	1.63" (41.4)	.16" (3.2)	<b>20509003</b>
1¼	1.61" (40.9)	2.00" (50.8)	.16" (3.2)	<b>20509004</b>
1½	1.84" (46.7)	2.36" (59.9)	.16" (3.2)	<b>20509005</b>
2	2.31" (58.7)	2.83" (71.9)	.16" (3.2)	<b>20509006</b>

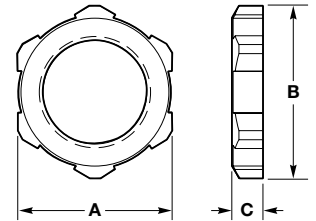


### Chrome Plated Steel with Neoprene Ring

2½	2.91" (73.9)	3.44" (87.4)	.24" (6.1)	<b>20509007</b>
3	3.52" (89.4)	4.08" (103.6)	.24" (6.1)	<b>20509008</b>

## Nylon PG Thread Locknuts

PG Thread Size	A Inches (mm)	B Inches (mm)	C Inches (mm)	Catalog Number
PG7	.75" (19.1)	.80" (20.3)	.22" (5.6)	<b>LNP7BPK100</b>
PG9	.86" (21.8)	.91" (23.2)	.22" (5.6)	<b>LNP9BPK100</b>
PG11	.94" (23.9)	1.03" (26.2)	.22" (5.6)	<b>LNP11BPK100</b>
PG13.5	1.06" (26.9)	1.14" (29.0)	.24" (6.1)	<b>LNP13BPK100</b>
PG16	1.18" (30.0)	1.30" (33.0)	.25" (6.1)	<b>LNP16BPK100</b>
PG21	1.41" (35.8)	1.54" (39.1)	.25" (6.1)	<b>LNP21BPK100</b>
PG29	1.81" (46.0)	2.00" (50.8)	.25" (6.1)	<b>LNP29BPK25</b>
PG36	2.24" (56.9)	2.50" (63.5)	.25" (6.1)	<b>LNP36BPK25</b>



## Nylon Metric Thread Locknuts

PG Thread Size	A Inches (mm)	B Inches (mm)	C Inches (mm)	Catalog Number
M12	.75" (19.1)	.82" (20.8)	.22" (5.6)	<b>LNM12BPK100</b>
M16	.87" (22.09)	.98" (25.0)	.22" (5.6)	<b>LNM16BPK100</b>
M20	1.06" (27.0)	1.18" (30.0)	.25" (6.4)	<b>LNM20BPK100</b>
M25	1.38" (35.1)	1.54" (39.1)	.28" (7.1)	<b>LNM25BPK100</b>
M32	1.61" (40.9)	1.80" (45.7)	.28" (7.1)	<b>LNM32BPK100</b>
M40	1.97" (50.0)	2.18" (55.4)	.28" (7.1)	<b>LNM40BPK100</b>

Dimensions shown are approximate and are subject to change without notice.