

Fiber Cable Assemblies

Indoor Fiber Jumper Cables

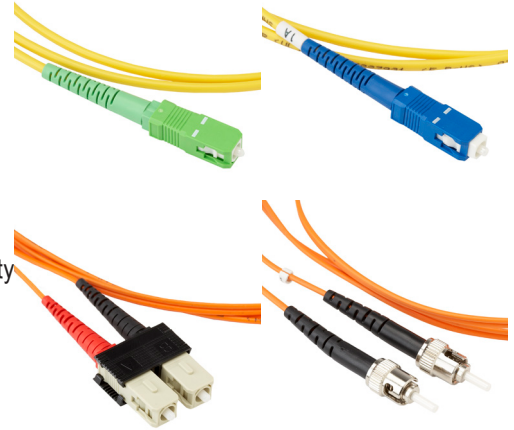


Application

A fiber jumper, sometimes called a fiber patch cord, is a length of fiber cabling fitted with connectors at each end. They are used to connect end devices or network hardware.

Description

Clearfield® offers singlemode and multimode, simplex and duplex Indoor Fiber Jumper Cables manufactured to tight internal specifications that exceed industry-accepted standards. Fiber assemblies are used in a variety of carrier networks and private network environments. The key to manufacturing high-performance fiber assemblies is controlling polish radius, apex offset and fiber undercut. Clearfield monitors its automated polishing process to exceed industry specifications for insertion and return loss, ensuring a top-quality product.



Features and Benefits

Integrity

- Terminations are designed and tested to Telcordia GR-326
- Clearfield® FiberDeep® Guarantee: 0.2 dB insertion loss or less, exceeding industry standards
- Supports industry standard singlemode and multimode connectors
- Singlemode and multimode and hybrid cables available

Protection

- Each fiber is individually covered with an outer jacket for added protection
- Wide variety of jacket sizes for all applications, 3 mm, 2 mm, 1.6 mm, 1.2 mm, 900 µm
- Riser and Plenum rated jacket options available
- Available in simplex, dual-round and dual zip-cord configurations

Access

- Compact jacket design minimizes cable pile up
- Industry standard terminations include SC and LC (ask a Clearfield representative for other connector availability)

Investment

- Indoor Jumper Assemblies offer an economical solution for deploying fiber in any optical network
- Environmentally stable, low-insertion loss, minimal back reflection
- All assemblies are 100% tested

Technical Specifications

Indoor Fiber Jumper Cables	
Core Size and Type	Singlemode and multimode
Fiber Count	Simplex (1-fiber) and duplex (2-fiber)
Jacket O.D.	900 µm, 1.6 mm, 2.0 mm, 3.0 mm
Cable Types	Indoor Riser, Indoor Plenum
Connector Types	SC/UPC, SC/APC, LC/UPC, LC/APC
Operating Temperature	-40°C to 85°C (-40°F to 185°F)

