



PowerPact B

Molded case circuit breakers and switches from 15-125 A



schneider-electric.us/ppb

Life Is On

SQUARE D™

by Schneider Electric

Efficiency that clicks.

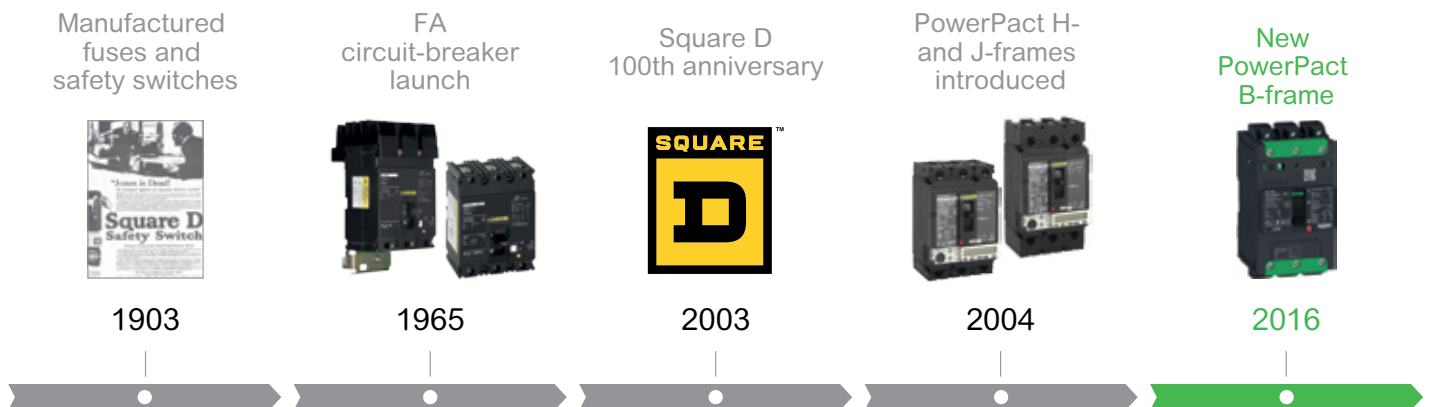


PowerPact B molded case circuit breakers

Schneider Electric introduces a new family member of the Square D PowerPact™ range of circuit breakers, the PowerPact B-frame.

PowerPact B-frame circuit breakers benefit from 60 years of expertise and leadership in industrial circuit breaker technology.

As well as offering proven performance, flexibility, and reliability, PowerPact B-frame circuit breakers feature new innovations such as the patented Everlink™ connections and integrated DIN rail mounting.



PowerPact B circuit breakers: Optimized for your needs

The PowerPact B-frame circuit breaker provides economical thermal-magnetic circuit protection in a compact size. It offers unique values to electrical system designers and installers in addition to a wide range of accessories, auxiliaries, and lug options.

PowerPact B-frame ratings and types

- Available in 1, 2, 3, and 4-pole unit mount construction & 1, 2, and 3-pole I-Line™ construction
- Cost-effective fixed thermal-magnetic trip units from 15-125A up to 600Y/347 Vac
- Interrupting ratings include D-18 kA, G-35 kA, and J-65 kA at 480 Vac
- Unique I-Line construction mounts into Square D™ panelboards and switchboards. Designed to the same 1.5" per pole widths as the legacy F-frame, simplifying substitution without blank fillers
- Unit mount (aka: lug-lug) construction is 30% smaller in size with 25% more capacity than the legacy unit-mount F-frame design



EverLink patented technology

PowerPact B-frame devices feature EverLink lugs, a new cable connection method with wire creep-compensating technology built directly into the lug:

- EverLink lug connectors reduce the loosening of cables over time using a spring tension design
- EverLink lugs are rated for bare use with fine-stranded conductors up to Class K
- EverLink lugs are also available with unique integrated control wire terminals

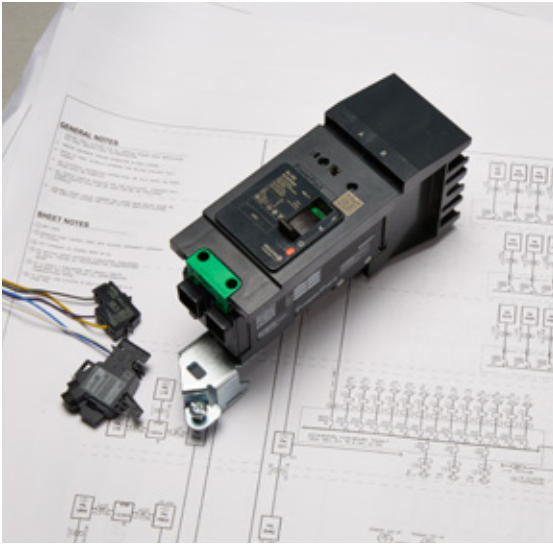


EverLink lugs with integrated control wire terminals are quick and easy to use



More than
35 patents
have been
registered for
PowerPact
B-frame circuit
breakers

Your efficiency is our first concern.



I design electrical solutions.

Win more projects and deliver the best solution for your customers. Ensure reliable circuit protection and secure connections over time by specifying:

- I-Line group mounted circuit breakers for best-in-class electrical power distribution applications
- Unit mount circuit breakers with EverLink lugs for control panel and machine applications
- Benefit from our customer support to help design the best solution for your customers
- Design for safety of people and property by specifying shunt trip circuits for remote emergency-off operation or undervoltage release coils to protect equipment



I build and install electrical equipment.

Make your business more profitable.

- Save up to 40% of time spent mounting and connecting with I-Line plug-on circuit breakers or the unit-mounted circuit breakers with built-in DIN rail mounting
- Be ready for last minute project changes with one-click, field-installable electrical accessories! Pre-wired versions available
- Increase operational efficiency with auxiliary contacts that indicate circuit status for remote monitoring systems
- Easily retrofit PowerPact B-frame circuit breakers into I-Line panelboards and switchboards with 25% more capacity than legacy F-frame circuit breakers



I design and build control panels or machines.

Optimize your solution.

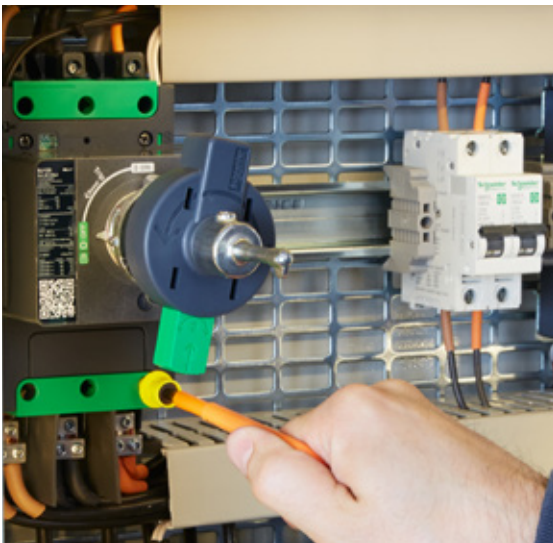
- Best combination of size and performance for main and feeder circuit protection
- Termination options suit a wide variety of specification and design needs
- Benefit from working with a single worldwide supplier of industry leading electrical equipment including Altivar™, Modicon™, Multi 9™, PowerPact™, Square D™, and TeSys™ designs
- Certified to UL, CSA, NOM, IEC, and CCC standards



Easy Mounting.

Save time in mounting and wiring.

- Unit mount construction features integrated DIN rail mounting, in addition to traditional back pan mounting with screws
- Hinged front cover reveals pockets for mounting electrical accessories with spring cage connectors that insure your work clicks right into place



Reliable External Operators.

Operate with confidence.

- Broad offering of NEMA and IEC style rotary operating mechanisms designed to be used as main panel disconnects for control panel applications.
- New NFPA 79 compliant open door shaft operator works with PowerPact B, H, J and L-frame operating mechanisms up to 600A.



PowerPact B-frame circuit breakers: Select and order

1 Design

Full range of design tools

- Complete range of CAD drawings allow you to plan your panel
- Consult our extensive selectivity tables to determine upstream and downstream circuit breaker selectivity
- UL approved series ratings with upstream PowerPact circuit breakers include more combinations and at higher short circuit current ratings than legacy F-frame designs

3 Build

Build faster

- One-click installation and flexibility with field-installable accessories and auxiliaries
- Built-in DIN rail makes installation simple



2 Configure and order

Customize PowerPact B-frame circuit breakers to your needs with a wide range of accessories and lug options. Available factory-installed or as field-installable kits.

Comprehensive catalog available [#0613CT1603](#)

4 Operate and maintain

Get quick access to product information

- Accessories are externally visible through the green indicator windows
- The QR code provides easy access to information on the product and quick access to the [customer care center](#)

PowerPact B catalog numbering

Character	Three levels of breaking capacities		
	240 V AC	480 V AC	600Y/347 V AC
BD	25 kA	18 kA	14 kA
BG	65 kA	35 kA	18 kA
BJ	100 kA	65 kA	25 kA

Character	Power terminals
F	Terminal nut connector kits both ends
L	EverLink lugs both ends
A	I-Line ON end, mechanical lugs OFF end

Character	Number of poles	
3	1 – 1P	3 – 3P
	2 – 2P	4 – 4P

Character	Voltage
4	480Y/277 Vac (I-Line only, requires Y suffix if 2P/3P)
6	600Y/347 Vac (480, 240 Vac delta)

Character	Current range		
125	000 = Molded case switch, requires S12 suffix		
	015 = 15 A	040 = 40 A	080 = 80 A
	020 = 20 A	045 = 45 A	090 = 90 A
	025 = 25 A	050 = 50 A	100 = 100 A
	030 = 30 A	060 = 60 A	110 = 110 A
	035 = 35 A	070 = 70 A	125 = 125 A

Character	I-Line Phase Connection	Poles	Example
blank	ABC	3	BDA36100
6	CBA	3	BDA361006
1	AB	2	BDA261001
2	AC	2	BDA261002
3	BA	2	BDA261003
4	BC	2	BDA261004
5	CA	2	BDA261005
6	CB	2	BDA261006
1	A	1	BDA161001
3	B	1	BDA161003
5	C	1	BDA161005

Character	Lug option suffix (3rd character must be L)
No Suffix	EverLink lugs both ends
LU	EverLink lug with control wire terminal ON end; Everlink lug OFF end
LV	EverLink lug ON end; EverLink lug with control wire terminal OFF end
LW	EverLink lug with control wire terminal both ends
LC	Copper mechanical lugs both ends
LH	Aluminum mechanical lugs both ends



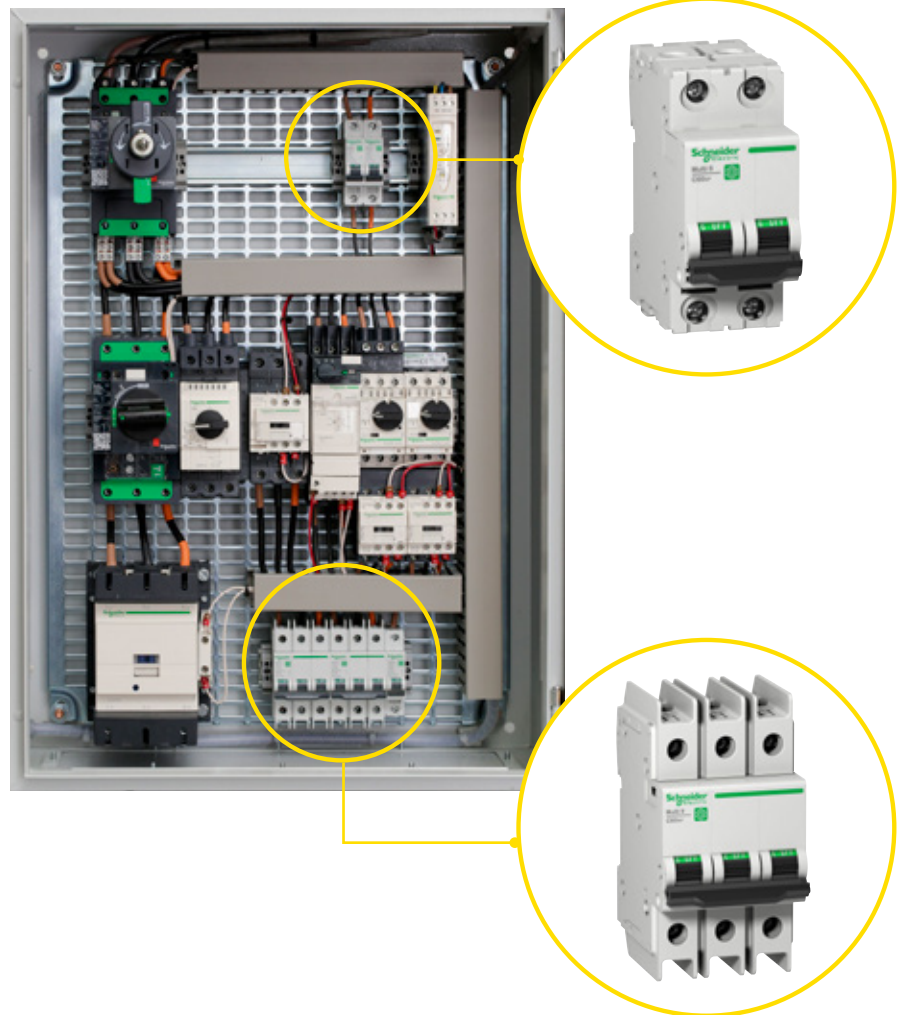
Multi 9 Miniature Circuit Breakers: The perfect complement to PowerPact B-Frame

Multi 9™ circuit breakers are a modular range of DIN rail mounted miniature circuit breakers offering great performance. Featuring new optimized designs and smaller footprints, the Multi 9 range remains dedicated to equipment manufacturers (OEMs) needing small circuit protection products with global availability.

Multi 9 circuit breakers at a glance

- Up to 63 A at 240 Vac and 35 A at 480Y/277 Vac
- Ratings up to 63 A at 500 Vdc
- Branch circuit and supplementary protector types
- Ground fault protection versions
- Electrical and mechanical auxiliaries and accessories

www.schneider-electric.us/multi9



Schneider Electric USA, Inc.

Schneider Electric
800 Federal Street
Andover, MA 01810
Phone: 1-888-SQUARE D (778-2733)

www.schneider-electric.us

October 2016
Document Number 0611BR1601

©2016 Schneider Electric. All Rights Reserved. Schneider Electric, Altivar, EverLink, I-Line, Life is On Schneider Electric, Modicon, Multi 9, PowerPact, Square D and TeSys are trademarks and the property of Schneider Electric SE, its subsidiaries and affiliated companies. All other trademarks are the property of their respective owners.

Life Is On

SQUARE D
by Schneider Electric