

Catalog Number	
Notes	Type



Low-Profile T5 Striplight

Z NY

Linear Lamps
1 or 2 Lamps

FEATURES & SPECIFICATIONS

INTENDED USE — The industry's next generation in linear direct fluorescent products. This new compact, low-profile design offers our customers unique product features which improve the overall installation process and appearance while reducing labor cost, making it the most versatile solution for commercial, retail, manufacturing, warehouse, and cove and display applications.

ATTRIBUTES — Designed to accommodate a wide variety of T5 and T5HO lamp lengths. Channel offers the gripper back feature which strengthens the overall construction and allows for the use of the Z spring hanger (see back). Patent-pending channel cover offers a secure fit design allowing for quick attachment and easy access without pinching wires.

CONSTRUCTION — Constructed to comply with New York City electric code. Made in USA.

Compact designed channel and cover are formed from code-gauge cold-rolled steel. Locking lamp holder tracks bolsters strength of the overall strip construction while creating improved lamp stability. Design includes T5 socket, features rotating collar and enclosed contacts. Patent-pending "three-point" row connector locks channel together for straighter and faster rows mounting; included as standard.

FINISH — High-gloss, baked white enamel finish (white standard). Five-stage iron-phosphate pretreatment ensures superior paint adhesion and rust resistance. Other channel paint finish options: black (MB), smoke gray (SKGY) and galvanized (GALV).

OPTICAL — Reflector options include solid designs in both symmetric and asymmetric configurations. Consult factory for different-apertured versions.

ELECTRICAL SYSTEM — Thermally protected, resetting, Class P, HPF, non-PCB, UL listed.

Suitable for damp locations. AWN, TFN or THHN wire used throughout, rated for required temperatures.

INSTALLATION — Patent-pending "three-point" row connector locks channels together for straighter and faster rows mounting; included as standard. Ideal for surface-mount or suspended.

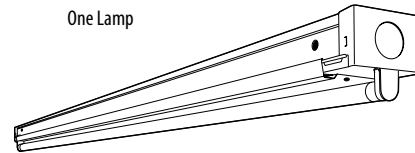
LISTING — UL Listed, CUL Listed or CSA Certified to Canadian Standards.

WARRANTY — 1-year limited warranty. Complete warranty terms located at:

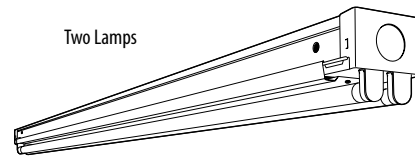
www.acuitybrands.com/support/warranty/terms-and-conditions

Note: Actual performance may differ as a result of end-user environment and application.

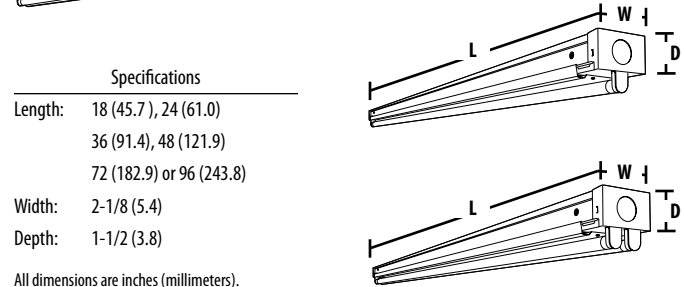
Specifications subject to change without notice.



One Lamp



Two Lamps



Specifications	
Length:	18 (45.7), 24 (61.0) 36 (91.4), 48 (121.9) 72 (182.9) or 96 (243.8)
Width:	2-1/8 (5.4)
Depth:	1-1/2 (3.8)

All dimensions are inches (millimeters).

ORDERING INFORMATION For shortest lead times, configure products using **standard options** (shown in bold). Example: Z 1 54T5HO Z5SMR46 MVOLT GEB10PS

Series	Number of Lamps	Lamp Type	Configuration	Paint Finish	Reflector Type	Voltage
Z Compact T5 For tandem double-length unit, add prefix T. Example: TZ	1	14T5 14W T5 (22")	(blank) No reflector	(blank) White	(blank) Solid	MVOLT ²
	2	21T5 21W T5 (34")	Z5ASMR46 46" asymmetric reflector	MB Matt black		120
	Not included	24T5HO 32W T8 (48")	Z5SMR46 46" symmetric reflector	GALV Galvanized		277
		28T5 28W T5 (46")	Other lengths available. See Accessories.	SKGY Smoke gray		347 ¹
		39T5HO 39W T5 HO (34")				Others available
		54T5HO 54W T5 HO (46")				

Options	
GEB10PS T5 electronic ballast, ≤10% THD, instant start	EL55 Emergency battery pack (nominal 390-700 lumens); consult factory for additional battery packs ^{2,3}
SS 0.95 ballast factor SIMPLY5™ system ⁴	EL65 Emergency battery pack (nominal 725-1325 lumens)
SS115 1.15 ballast factor SIMPLY5™ system ⁴	CSA CSA Certified
PLF_ Plug-in wiring, specify 1, 2 or 3 branch circuits and hot wires (A=black, B=red, C=blue, AB or AC)	NOM NOM Certified
	NY I.B.E.W. union made, NYC code compliant

Notes

1. Only available with 28W and 54W.
2. MVOLT (120-277V), 50-60HZ.
3. Specify voltage.
4. SIMPLY5 system includes a 13' S5SSC RELOC® wiring system. Specify voltage unless hardware (HW) or PWS is ordered.
5. Available with 3', 4' and 8' lengths only.
6. 120-277V only for power feed.
7. Standard wire size for power feed is 18 gauge. For 12 gauge add 12AWG to the end of catalog number. Consult factory for length of runs and required wire size.
8. 347V only.
9. One cable per package.

Accessories: Order as separate catalog number.			
SQ_ Swivel stem hanger (specify length in 2" increments up to 48")	Z5SMR34 Symmetric reflector, 34" white	WGZ5SMR46 46" wireguard, white, for symmetric reflector	
ZSPRG J2 Tong and T-grid hanger, for 15/16" T-grid (1 pair)	Z5ASR34 Asymmetric reflector, 34" white	WGZ5ASR46 46" wireguard, white, for asymmetric reflector	
Z5SMR46 Symmetric reflector, 46" white	Z5SMR22 Symmetric reflector, 22" white	MSSACF_ Adjustable aircraft cable system with power feed (specify length as 36, 72 or 108 inches) ⁹	
Z5ASR46 Asymmetric reflector, 46" white	Z5ASR22 Asymmetric reflector, 22" white	MSSAC_ Adjustable aircraft cable system (specify 36, 72 or 108 inches) ⁹	
	WGZ46 46" wireguard, white		

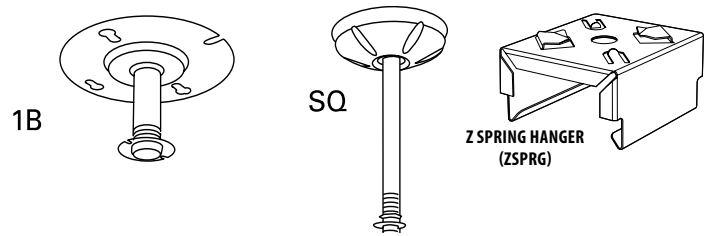
Z T5 Compact Striplight

MOUNTING DATA

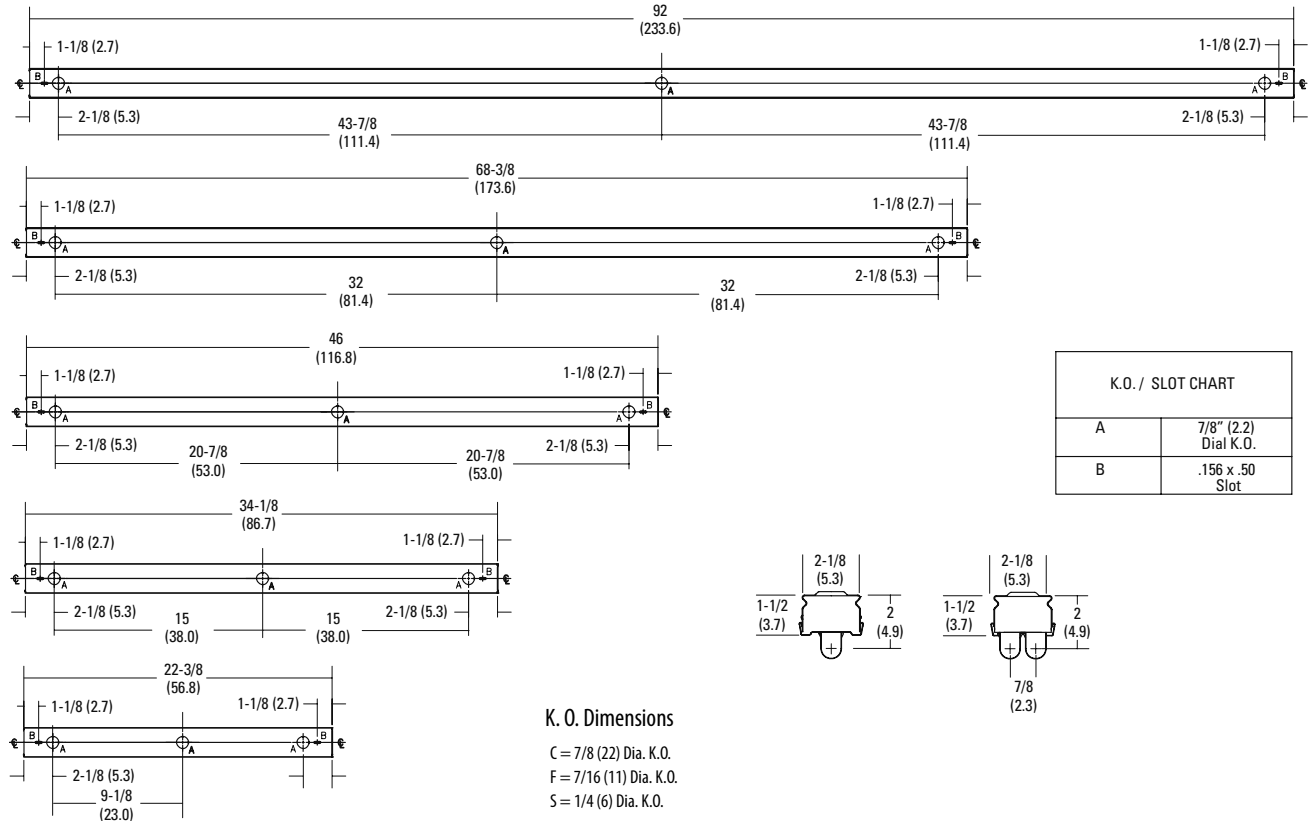
For unit or row installation, surface or stem mounting.

Unit installation — Minimum of two hangers required.

Row installation — One hanger per channel plus one per row required. Hanging devices illustrated.



DIMENSIONS



K.O. / SLOT CHART	
A	7/8" (2.2) Dial K.O.
B	.156 x .50 Slot

PHOTOMETRICS

Calculated using the zonal cavity method in accordance with IESNA LM41 procedure. Floor reflectances are 20%. Lamp configurations shown are typical. Full photometric data on these and other configurations available upon request.

TEST NO: LTL17092
 LUMINAIRE CATALOG NO.: Z 1 54T5HO MVOLT GEB10PS
 LUMENS PER LAMP: 4450

50% 30% 10%	f p pc pw	Coefficients of Utilization								
		80%			70%			50%		
		%	0	2	%	0	2	%	0	2
102	0	109	109	109	106	106	106	99	99	99
83	1	92	87	83	89	85	81	84	80	77
70	2	79	72	66	76	70	64	72	66	61
61	3	68	60	53	66	59	52	62	56	50
53	4	60	51	44	58	50	44	55	48	42
47	5	53	44	38	52	43	37	49	41	36
42	6	48	39	32	46	38	32	44	36	31
38	7	43	34	28	42	34	28	40	32	27
35	8	39	31	25	38	30	25	36	29	24
32	9	36	28	22	35	27	22	33	26	21
30	10	33	25	20	32	25	20	30	24	19

Zonal Lumen Summary			
Zone	Lumens	% Lamp	% Fixture
0° - 30°	809.8	18.2	19.5
0° - 40°	1366.0	30.7	32.9
0° - 60°	2625.8	59.0	63.2
0° - 90°	3806.5	85.5	91.6
90° - 180°	347.8	7.8	8.4
0° - 180°	4154.3	93.4	100.0

TEST NO: LTL17070
 LUMINAIRE CATALOG NO.: Z 2 54T5HO MVOLT GEB10PS
 LUMENS PER LAMP: 4450

50% 30% 10%	f p pc pw	Coefficients of Utilization								
		80%			70%			50%		
		%	0	2	%	0	2	%	0	2
102	0	119	119	119	115	115	115	106	106	106
83	1	99	93	88	95	90	85	88	84	80
70	2	84	76	69	81	73	67	75	68	63
61	3	73	63	56	70	61	54	64	57	51
53	4	64	54	46	61	52	45	56	49	42
47	5	56	46	39	54	45	38	50	42	36
42	6	50	40	33	48	39	32	45	37	31
38	7	45	36	29	44	35	28	40	33	27
35	8	41	32	25	39	31	25	37	29	24
32	9	37	28	22	36	28	22	34	26	21
30	10	34	26	20	33	25	20	31	24	19

Zonal Lumen Summary			
Zone	Lumens	% Lamp	% Fixture
0° - 30°	1451.4	16.3	15.8
0° - 40°	2517.9	28.3	27.4
0° - 60°	5023.5	56.4	54.7
0° - 90°	7793.5	87.6	84.8
90° - 180°	1392.3	15.6	15.2
0° - 180°	9185.9	103.2	100.0