

# VTC-TNB4RFA3

Transcendent Series 4 MegaPixel Generation III Advanced A.I.  
Fixed IP Bullet Camera



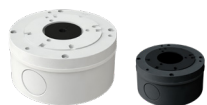
VITEKCCTV.COM  
(888) VITEK-70



## KEY FEATURES

- 1/3" 4.0 Megapixel CMOS Image Sensor
- Up to 30fps @ 4 MegaPixel (2592 × 1520)
- Available with 3.6 or 2.8mm Fixed Lens Configurations:  
VTC-TNB4RFA3 (Ivory w/ 3.6mm), VTC-TNB4RFA3-2 (Ivory w/ 2.8mm),  
VTC-TNB4RFA3B (Charcoal w/ 3.6mm),  
VTC-TNB4RFA3B-2 (Charcoal w/ 2.8mm)
- 2 Matrix IRs (up to 165' IR Range)
- True Wide Dynamic Range
- True Mechanical Day/Night function by ICR
- Gen. III Advanced Analytics: Abnormal Video, Face Detection, Regional Intrusion Detection, Regional Entrance / Exiting Detection, Line Crossing, Target Counting Detection
- 1 Channel Audio In\*
- Smart H.265 / H.265+ / H.265 / Smart H.264 / H.264+ / H.264 / MJPEG
- Remote Viewing via CMS, Internet Explorer, and iOS & Android Apps
- ONVIF Compliant
- MicroSD Card Slot for Local Recording (256GB)
- IP67 Weather Resistance
- Wall Mount Included and Optional Junction Boxes (VT-TJB08) Available  
*[See Other Mounting Options Below]*
- 12VDC & PoE (Power over Ethernet) Operation
- 3-Year Warranty

## MOUNTS



**VT-TJB08/B**  
Optional Junction Box  
for Cable Management



**VT-TPLMT**  
Universal Pole  
Mount - Ivory,  
reqs. VT-TJB08



**VT-TCNMT**  
Universal Corner  
Mount - Ivory, reqs.  
VT-TJB08

## RECORDERS



Pair with VITEK Transcendent Series DVRs, VT-TNR818PF, VT-TNR1646PF, and VT-TNR3216PF with Built-in PoE and Advanced Analytics including Face Detection.

## SPECIFICATIONS

Image Sensor	1/3" 4.0 Megapixel Progressive Scan CMOS
Image Size	4 MegaPixel (2592 × 1520)
Resolution	4 MP (2592 × 1520) / 3 MP (2304 × 1296) / 1080P (1920 × 1080) / 720P (1280 × 720) / D1/CIF (480 × 240)
Min. Illumination	0 Lux (IR LED ON)
Lens	2.8mm or 3.6mm Fixed Iris Lens Options
Day/Night	True Day/Night by ICR
IR LEDs	2 Matrix Style IR LEDs
IR Distance	Up to 165'
Video Compression	Smart H.265 / H.265+ / H.265 / Smart H.264 / H.264+ / H.264 / MJPEG
Audio Compression	G.711A / G.711U
Main-Stream	4 MP, 2K, 3MP, 1080P, 720P (60Hz: 1 ~ 30fps; 50Hz: 1 ~ 25fps) HFR mode: 1080P / 720P (60Hz: 1 ~ 60fps; 50Hz: 1 ~ 50fps)
Bit Rate	64 Kbps ~ 8 Mbps
Wide Dynamic Range (WDR)	120dB Super WDR
Digital Noise Reduction (DNR)	3D-DNR
Quality	VBR (Five Levels of Adjustment) / CBR (Adjustable)
Image Setting	ROI, Saturation, Brightness, Chroma, Contrast, Sharpen, NR; Adjustable through client software or web browser
Intelligent Analytics (Generation III)	Face Detection, Target Counting, Intrusion, Region Entrance / Exit, Line Crossing, Scene Change, Video Blur
Smart Alarm	Motion detection, SD card error, SD card full
Region of Interest (ROI)	Each ROI to be configured separately
Audio	1 Ch. Audio In*
Local Storage	Built-in Micro SD card slot up to 256GB
Remote Viewing	CMS / Web Browser / Mobile (iOS/Android)
Supported Browsers	Internet Explorer, Chrome and Firefox with IE Tab
Connection Protocol	ONVIF
Ingress	IP67
Power Input	12VDC / PoE
Power Consumpt. (12VDC)	120mA (LEDs Off) / 480mA (LEDs On)
Power Consumpt. (PoE)	< 7W
Working Environment	-22° ~ 140° / < 95% Humidity
Weight	24.34oz / 1.52lb (690g)
Dimensions: L × W × H	8.68 × 3.15 × 2.78" (220.5 × 80.1 × 70.5mm)

\*Please research local, state and federal laws regarding the implementation of audio surveillance.

