

CBT

BACK-LIT TROFFER

NOTE: Components shown in images are representative only and may vary based on the configuration ordered.

CAUTION

Read instructions carefully and turn electricity off at main circuit breaker panel before beginning installation.

WARNING

If any special control devices are used with this luminaire, follow the instructions carefully to assure full compliance with NEC requirements. If there are any questions, contact a qualified electrical contractor.

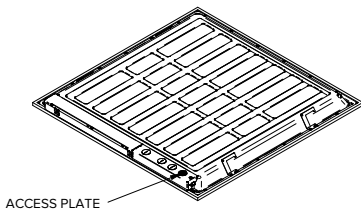
WARNING

This product contains chemicals known to the State of California to cause cancer, birth defects and/or other reproductive harm. Thoroughly wash hands after installing, handling, cleaning, or otherwise touching this product.

INSTALLATION METHOD 1: RECESSED MOUNTING

STEP 1

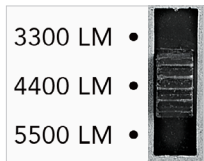
Open access plate. Use knockouts to connect power using appropriately-sized electrical fittings.



ACCESS PLATE

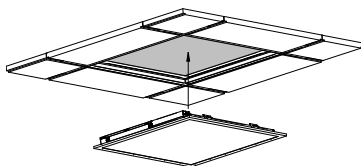
STEP 2

Set lumen output to desired level using lumen selector switch on gear tray.



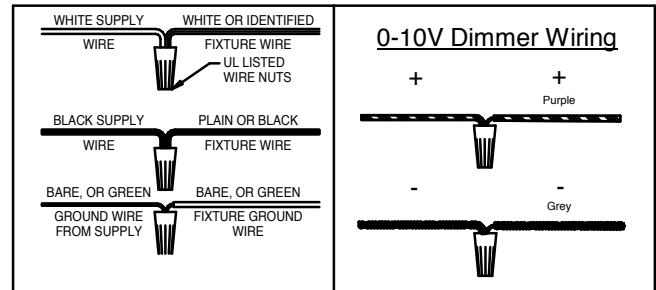
STEP 3

Raise unit into ceiling.



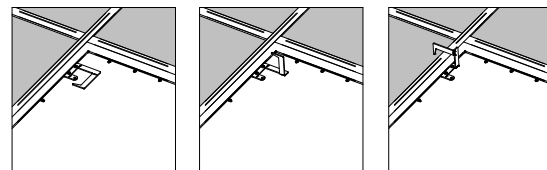
STEP 4

Make wiring connections.



STEP 5

Bend T-bar clips into position.

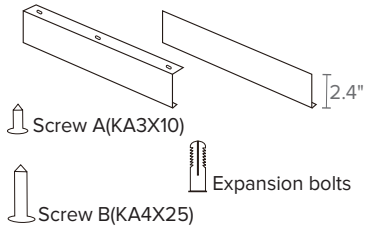


CBT

BACK-LIT TROFFER

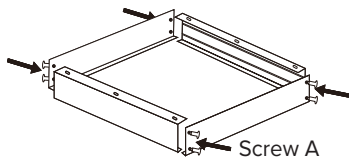
INSTALLATION METHOD 2: SURFACE MOUNTING

ACCESSORY PARTS



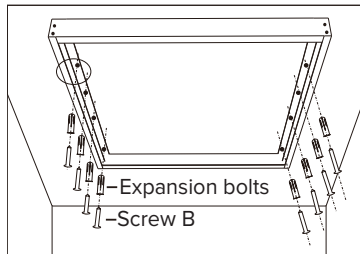
STEP 1

Assemble the four frames with screw A to a whole square.



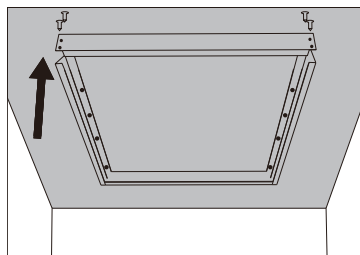
STEP 2

Fix the square frames to the ceiling with Screw B.



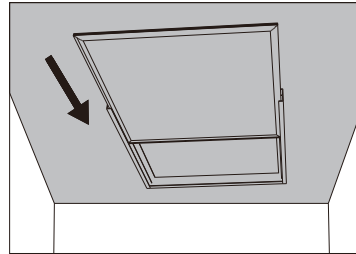
STEP 3

Demount one frame.



STEP 4

Put the panel into the frame square.



STEP 5

Fix the last frame with screw A.

