

## SPECIFICATION & FEATURES

### DESCRIPTION:

Orbit Industries compression connectors are used to bond EMT thinwall conduits to electrical junction boxes or enclosures. The steel construction ensures mechanical protection and the conduit to the designated electrical junction box or enclosure. With Orbit Industries' labor saving design, electrician can quickly tighten these connectors on EMT conduits.

## STEEL INSULATED EMT CONNECTORS COMPRESSION TYPE 1/2" ~ 4"



### CERTIFICATION:

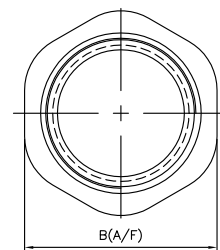
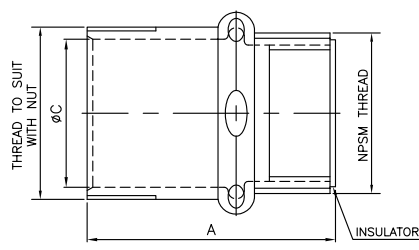
UL file E310660, conforms to UL 514B (1/2" ~ 2")  
UL file E310358, conforms to UL 514B (2-1/2" ~ 4")

### FEATURES:

- Steel
- Electroplated Zinc
- With Insulated Throat
- Concrete-Tight
- Suitable for applications above 600V
- With Insulated Throat (Red, Throat color may vary)
- Sizes 2-1/2" to 4" are also listed for RIGID and IMC Conduits

### LINE DRAWINGS:

1/2" ~ 4"



### CONFIGURATION DATA:

Part No.	Trade Size	A (in)	B (in)	C (in)	Std.Pkg.	Master Ctn.
OF7601-S	1/2"	1.417	0.965	0.732	25	250
OF7602-S	3/4"	1.575	1.201	0.949	25	250
OF7603-S	1"	1.850	1.465	1.189	10	100
OF7604-S	1-1/4"	1.969	1.823	1.535	10	100
OF7605-S	1-1/2"	2.244	2.075	1.768	10	50
OF7606-S	2"	2.677	2.559	2.224	5	50
OF7607-S	2-1/2"	3.346	3.327	2.921	-	12
OF7608-S	3"	3.543	3.886	3.543	-	12
OF7609-S	3-1/2"	3.898	4.37	4.047	-	6
OF7610-S	4"	4.055	4.941	4.547	-	6

