

4" Square Double Gang Device Rings

Features

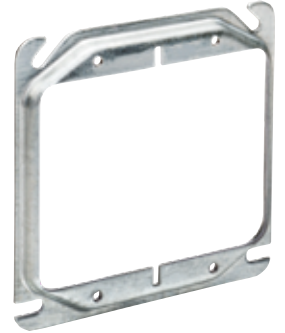
- Ideal for exposed work applications, providing an easy method for the installation of electrical devices
- Can be used on any 4" square box

Applications

- 4" double gang device rings are used with 4" square boxes to mount switches, receptacles and devices
- Angled slots on the covers compensate for up to 12° of box misalignment on upright framing members
- Four slots for mounting vertically or horizontally

Standard Material

- Galvanized steel



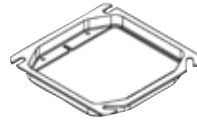
E195124



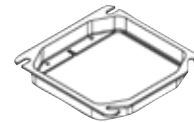
R2240



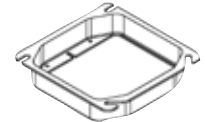
R2241



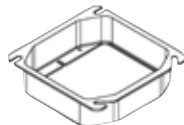
R2242



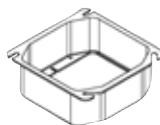
R2243



R2244



R2245



R2246



R2247



R2248

Catalog Number	UPC	Description	Depth	Cubic Inches	Ship Case	Weight/Case
R2240	01542	Flat	Flat	---	200	21
R2241	86731	Raised 1/4"	1/4"	2.3	200	24
R2242	86732	Raised 1/2"	1/2"	5.4	100	22
R2243	86733	Raised 5/8"	5/8"	7	100	36
R2244	86734	Raised 3/4"	3/4"	8.5	100	38
R2245	86735	Raised 1"	1"	11.6	50	40
R2246	86736	Raised 1-1/4"	1-1/4"	14.7	50	21
R2247	01021	Raised 1-1/2"	1-1/2"	15.5	50	22
R2248	01022	Raised 2"	2"	20.7	50	23